



PATTERN COLLECTION

Women



Emma

Designed by Rachel Brockman

DIFFICULTY

Easy

SIZES

Extra Small (Small, Medium, Large, 1X, 2X, 3X, 4X, 5X)

Shown in Small size with approx. 2" of positive ease.

FINISHED MEASUREMENTS

Bust: 30½ (35½, 40½, 45½, 50½, 55½, 60½, 65½, 70½)"

Length: 19½ (20, 20½, 21½, 22, 22½, 23½, 24, 24½)"

MATERIALS

[Universal Yarn Cassatt](#) (35% baby alpaca, 35% wool, 20% nylon, 10% viscose; 50g/120 yds)

- 606 Opera (A) - 3 (3, 4, 4, 4, 5, 5, 6, 6) balls
- 603 Dancer (B) - 2 (2, 2, 2, 3, 3, 3, 3, 4) balls

Needles: US Size 9 (5.5 mm) 24-32" or size needed to obtain gauge

US Size 8 (5 mm) 24-32" circular and 16" circular

Notions: Tapestry needle, stitch markers (one unique marker to denote bor), stitch holders or waste yarn

GAUGE

16 sts x 21 rnds/rows = 4" in Lace patt with larger ndl

Save time, check your gauge.

Knit, Relax, Smile, Repeat!

2022 © Universal Yarn, Inc.

www.universalyarn.com

All rights reserved. This pattern may not be reproduced for business, trade or sale.

Questions? Contact patterns@universalyarn.com

PATTERN NOTES

When a chill starts to pepper the air, a sweater vest is your ultimate layering piece. It adds a put-together look to any outfit, and they look even better when knit using an exquisite yarn like Cassatt. The Emma vest takes a texture-rich yarn and uses a simple lace stitch pattern and stripes to make it the focal point. The lace creates a pretty scalloped hemline, and breezy shaping means you'll complete this project in no time.

This vest is knit in the round from the bottom up. The Front and Back are separated at the underarms and worked flat. The shoulders are joined with the three-needle bind-off. Stitches for the neckband are picked up and worked in the round. We suggest wearing this vest with 0-5" of positive ease.

STITCH GUIDE

Lace

(multiple of 10 sts, plus 1; worked in the rnd)

Rnd 1: With color A, * p1, yo, k3, S2KP2, k3, yo; rep from * to last st, p1.

Rnd 2: With color A, * p1, k9; rep from * to last st, p1.

Rnd 3: With color A, * p2, yo, k2, S2KP2, k2, yo, p1; rep from * to last st, p1.

Rnd 4: With color A, * p2, k7, p1; rep from * to last st, p1.

Rnd 5: With color A, * p3, yo, k1, S2KP2, k1, yo, p2; rep from * to last st, p1.

Rnd 6: With color A, * p3, k5, p2; rep from * to last st, p1.

Rnd 7: With color A, * p4, yo, S2KP2, yo, p3; rep from * to last st, p1.

Rnd 8: With color A, * p4, k3, p3; rep from * to last st, p1.

Rnds 9-16: With color B, rep Rnds 1-8.
Rep Rnds 1-16 for patt.

Lace

(multiple of 10 sts, plus 1; worked flat)

Row 1: With color A, * p1, yo, k3, S2KP2, k3, yo; rep from * to last st, p1.

Row 2: With color A, k1, * p9, k1; rep from * to end.

Row 3: With color A, * p2, yo, k2, S2KP2, k2, yo, p1; rep from * to last st, p1.

Row 4: With color A, k1, * k1, p7, k2; rep from * to end.

Row 5: With color A, * p3, yo, k1, S2KP2, k1, yo, p2; rep from * to last st, p1.

Row 6: With color A, k1, * k2, p5, k3; rep from * to end.

Row 7: With color A, * p4, yo, S2KP2, yo, p3; rep from * to last st, p1.

Row 8: With color A, k1, * k3, p3, k4; rep from * to end.

Rows 9-16: With color B, rep Rows 1-8.
Rep Rows 1-16 for patt.

VEST

Note: Change colors as indicated in Lace patt.

With color A and larger 24-32" circ ndl, cast on 122 (142, 162, 182, 202, 222, 242, 262, 282) sts. PM and join to knit in the rnd, being careful not to twist.

Set-up Rnd 1: Knit.

Set-up Rnd 2: P61 (71, 81, 91, 101, 111, 121, 131, 141) Front sts, pm to denote Side, p61 (71, 81, 91, 101, 111, 121, 131, 141) Back sts to end.

Rnd 1: Work Rnd 1 of Lace patt to m, sl m, work Rnd 1 of Lace patt to end. Patt will be repeated 6 (7, 8, 9, 10, 11, 12, 13, 14) times across each the Front and Back.

Cont in patt as est'd through Rnd 16 of Lace patt, then continuously rep Rnds 1-16 of Lace patt until piece meas approx. 11 (11, 11, 11½, 11½, 11½, 12, 12, 12)" from cast-on edge, ending 1 (2, 3, 4, 5, 6, 7, 8, 9) sts bef bor m.

Shape Armholes

Note: You will now begin working flat. Continue to change colors as indicated in Lace patt. If there are not enough sts to work a decrease and its corresponding increase, work these sts in Stockinette stitch instead.

Bind off 1 (2, 3, 4, 5, 6, 7, 8, 9) sts, remove bor m, bind off 1 (2, 3, 4, 5, 6, 7, 8, 9) sts, cont as est'd over Front sts to 1 (2, 3, 4, 5, 6, 7, 8, 9) sts bef Side m, bind off next 2 (4, 6, 8, 10, 12, 14, 16, 18) sts, removing Side m as you come to it, cont as est'd over Back sts to end, turn - 59 (67, 75, 83, 91, 99, 107, 115, 123) sts rem for Back. Place Front sts on holder or waste yarn.

Work a WS row even as est'd to end.

SIZE EXTRA SMALL ONLY

RS Dec Row: K1, k2tog, cont as est'd to last 3 sts, ssk, k1 - 2 sts dec'd, 57 sts rem.

SIZES SMALL THROUGH 5X ONLY

RS Dec Row: K1, k2tog, cont as est'd to last 3 sts, ssk, k1 - 2 sts dec'd, - (65, 73, 81, 89, 97, 105, 113, 121) sts rem.

WS Dec Row: P1, ssp, cont as est'd to last 3 sts, p2tog, p1 - 2 sts dec'd, - (63, 71, 79, 87, 95, 103, 111, 119) sts rem.

Cont to work a Dec Row, every row, - (2, 5, 8, 8, 11, 15, 18, 21) more times - (4, 10, 16, 16, 22, 30, 36, 42) sts dec'd, - (59, 61, 63, 71, 73, 73, 75, 77) sts rem.

Knit, Relax, Smile, Repeat!

2022 © Universal Yarn, Inc.

www.universalyarn.com

All rights reserved. This pattern may not be reproduced for business, trade or sale.

Questions? Contact patterns@universalyarn.com

ALL SIZES

57 (59, 61, 63, 71, 73, 73, 75, 77) sts.

Work even in patt as est'd, until piece meas 8½ (9, 9½, 10, 10½, 11, 11½, 12, 12½)" from Front/Back Separation, ending with a RS row.

Next Row: Cont as est'd over 10 (11, 12, 12, 16, 17, 16, 17, 18) Left Shoulder sts, bind off center 37 (37, 37, 39, 39, 39, 41, 41, 41) Neck sts, cont as est'd over 10 (11, 12, 12, 16, 17, 16, 17, 18) Right Shoulder sts to end. Place shoulder sts on holder or waste yarn.

Return Front sts to ndl, ready to work a WS row.

FRONT

Shape Armholes

Note: Continue to change colors as indicated in Lace patt. If there are not enough sts to work a decrease and its corresponding increase, work these sts in Stockinette stitch instead.

Work a WS row even as est'd to end.

Complete armhole shaping as for Back.

Cont even in patt as est'd, if necessary, until piece meas 1¾ (2¼, 2¾, 3¼, 3¾, 4, 4½, 5)" from Front/Back Separation, ending with a WS row.

Shape Front Neck

Note: Continue to change colors as indicated in Lace patt. If there are not enough sts to work a decrease and its corresponding increase, work these sts in Stockinette stitch instead.

Next Row (RS): Cont as est'd over 28 (29, 30, 31, 35, 36, 36, 37, 38) Left Front sts, bind off center st, cont as est'd over 28 (29, 30, 31, 35, 36, 36, 37, 38) Right Front sts. Place Left Front sts on holder or waste yarn.

Right Front

Even Row (WS): Cont even in patt as est'd to end.

Dec Row (RS): K1, k2tog, cont as est'd to end - 27 (28, 29, 30, 34, 35, 35, 36, 37) sts rem.

Rep Even Row and Dec Row, 17 (17, 17, 18, 18, 19, 19, 19) more times - 10 (11, 12, 12, 16, 17, 16, 17, 18) sts rem. Cont even in patt as est'd, if necessary, until piece meas 8½ (9, 9½, 10, 10½, 11, 11½, 12, 12½)" from Front/Back Separation, ending with a RS row.

Return Left Front sts to ndl, ready to work a WS row.

Left Front

Even Row (WS): Cont even in patt as est'd to last st, p1.

Dec Row (RS): Cont as est'd to last 3 sts, ssk, k1 - 27 (28, 29, 30, 34, 35, 35, 36, 37) sts rem.

Rep Even Row and Dec Row, 17 (17, 17, 18, 18, 18, 19, 19, 19) more times - 10 (11, 12, 12, 16, 17, 16, 17, 18) sts rem. Cont even in patt as est'd, if necessary, until piece meas 8½ (9, 9½, 10, 10½, 11, 11½, 12, 12½)" from Front/Back Separation, ending with a RS row.

With WS facing together, join Left Front and Left Back shoulder sts together using the three-needle bind-off. Rep for Right Front and Right Back shoulders.

FINISHING

Gently wash and block to finished measurements. Weave in ends.

Armhole Edging

(work both alike)

With color A and smaller 16" circ ndl, beg at center of underarm, pick up and knit 70 (76, 82, 88, 94, 100, 106, 112, 118) sts evenly around armhole. PM and join to knit in the rnd.

Rnd 1: * K1, p1; rep from * to end.

Rep Rnd 1 until piece meas 1½" from picked-up edge. Bind off all sts in patt.

Neckband

With color A and smaller 16" circ ndl, beg at Right Shoulder, pick up and knit 37 (37, 37, 39, 39, 39, 41, 41, 41) sts along Back Neck, 34 (34, 34, 36, 36, 36, 38, 38, 38) sts along Left Front Neck edge, place removable marker, pick up 1 center Front Neck st, place removable marker, pick up and knit 34 (34, 34, 36, 36, 36, 38, 38, 38) sts along Right Front Neck edge - 106 (106, 112, 112, 118, 118, 118) sts. PM and join to work in the rnd.

Rnd 1: * K1, p1; rep from * to 1 st bef removable m, k1, sl m, k1, sl m, * k1, p1; rep from * to end.

Rnd 2: Cont as est'd to 1 st bef removable m, S2KP2 (removing removable markers to complete dec and then replacing them on each side of Center Front Neck), cont as est'd to end - 2 sts dec'd, 104 (104, 104, 110, 110, 110, 116, 116, 116) sts.

Rep Rnds 1-2, 4 more times - 8 sts dec'd, 96 (96, 96, 102, 102, 102, 108, 108, 108) sts rem. Bind off all sts in patt.

Weave in rem ends.

Knit, Relax, Smile, Repeat!

2022 © Universal Yarn, Inc.

www.universalyarn.com

All rights reserved. This pattern may not be reproduced for business, trade or sale.

Questions? Contact patterns@universalyarn.com

Abbreviations

approx	approximately
bef	before
beg	begin(ning)
circ	circular
cont	continue
dec('d)	decrease(d)
est'd	established
k	knit
k2tog	knit 2 stitches together (1 st dec'd)
m	marker
meas	measures
ndl	needle
p	purl
p2tog	purl 2 sts together (1 st dec'd)
patt	pattern
pm	place marker
rem	remain(ing)
rep	repeat
rnd	round
RS	right side
S2KP2	slip 2 stitches as if to knit 2 together, knit 1, pass 2 slipped stitches over knit stitch; centered double decreases
sl	slip
ssk	slip next 2 sts individually knitwise, slip them back to left needle in this position, knit them together through the back loops (1 st dec'd)
ssp	slip next 2 sts individually knitwise, slip them back to left needle in this position, purl them together through the back loops (1 st dec'd)
St st	Stockinette stitch (knit on RS rows, purl on WS rows; in the rnd, knit every rnd)
st(s)	stitch(es)
tog	together
WS	wrong side
yo	yarn over



Knit, Relax, Smile, Repeat!

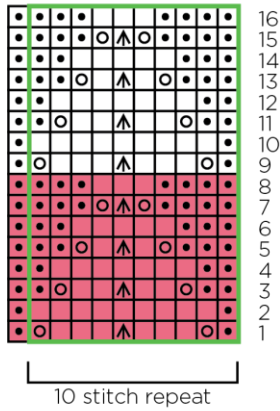
2022 © Universal Yarn, Inc.

www.universalyarn.com

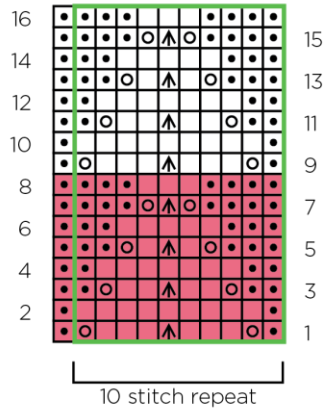
All rights reserved. This pattern may not be reproduced for business, trade or sale.

Questions? Contact patterns@universalyarn.com

Lace
(worked in the round)



Lace
(worked flat)

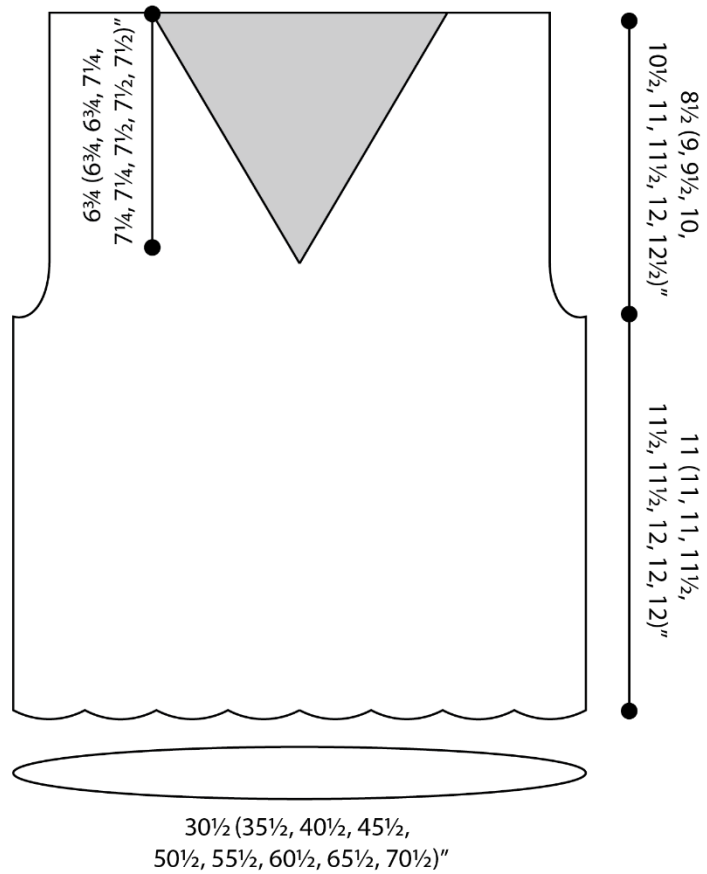


Key

- pattern repeat
- with color A, knit on RS, purl on WS
- with color A, purl on RS, knit on WS
- with color A, yo
- ▲ with color A, S2KP2
- with color B, knit on RS, purl on WS
- with color B, purl on RS, knit on WS
- with color B, yo
- ▲ with color B, S2KP2

2¼ (2¾, 3, 3,
4, 4¼, 4, 4¼, 4½)"

9¼ (9¼, 9¼, 9¾,
9¾, 9¾, 10¼, 10¼, 10¼)"



Knit, Relax, Smile, Repeat!

2022 © Universal Yarn, Inc.

www.universalyarn.com

All rights reserved. This pattern may not be reproduced for business, trade or sale.

Questions? Contact patterns@universalyarn.com