



PATTERN COLLECTION

Accessories



Embers Hat

Designed by Rachel Brockman

DIFFICULTY

Easy

SIZES

Adult Medium

FINISHED MEASUREMENTS

Circumference: 19½"

Height (excluding pom pom): 10½"

MATERIALS

[Universal Yarn Be Wool](#) (40% Wool, 60% Acrylic; 200g/94 yds)

- 101 Shadow (MC) - 1 ball

[Universal Yarn Be Wool Multis](#) (40% Wool, 60% Acrylic; 170g/80 yds)

- 201 Desert (CC) - 1 ball

Needles: US Size 15 (10 mm) 16" circular
US Size 17 (12 mm) 16" circular and set of DPNs (or your preferred needle for knitting small circumferences) *or size needed to obtain gauge*

Notions: Tapestry needle, stitch marker, 3½" pom pom maker

GAUGE

7.5 sts x 10 rnds = 4" in stranded colorwork using larger ndl

Save time, check your gauge.

Knit, Relax, Smile, Repeat!

2021 © Universal Yarn, Inc.

www.universalyarn.com

All rights reserved. This pattern may not be reproduced for business, trade or sale.

Questions? Contact patterns@universalyarn.com

PATTERN NOTES

A chunky, slouchy hat is the perfect accessory for cold days, or your next bonfire night with friends. The perfect hat is made even better when it knits up quickly! The Embers Hat combines our solid Be Wool yarn with Be Wool Multis in a simple colorwork pattern that is bold and graphic. This is a perfect hat for quick gifts, or just something fun for yourself you can easily complete over a couple days!

This hat is worked in the round from the bottom up. A pom pom is added to the top of the hat during finishing.

PATTERN BEGINS

HAT

Brim

With smaller ndl and MC, cast on 36 sts. PM and join to knit in the rnd, being careful not to twist.

Rnds 1-5: * K2, p2; rep from * to end.

Change to larger 16" circ ndl. Join CC, do not break MC.

Main Hat

Note: Crown Shaping begins on Rnd 17 of chart. Change to your preferred ndl for knitting small circumferences when there are too few sts to fit comfortably on 16" circ. Hat patt is repeated 3 times across each rnd.

Work Rnds 1-21 of Hat patt – 30 sts dec'd, 6 sts rem. Break yarn leaving approx. 8" tail. Thread tail through rem live sts and pull taut to close.

FINISHING

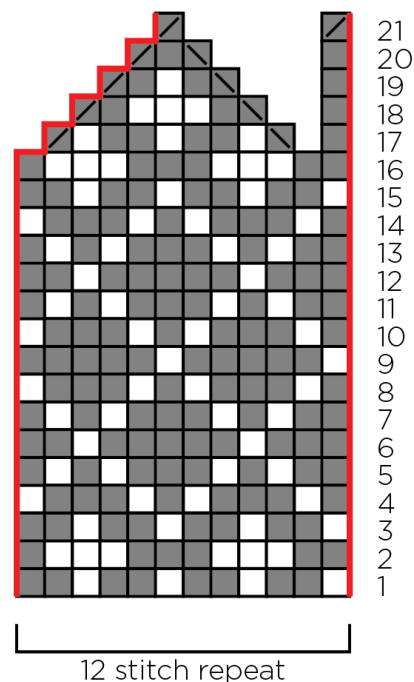
Gently wash and block to finished measurements. Weave in ends. Using CC and pom pom maker, create a 3½" pom pom and secure to top of hat. Weave in rem ends.

Abbreviations






CC	contrast color
circ	circular
cont	continue
dec('d)	decrease(d)
dpn(s)	double pointed needle(s)
k	knit
k2tog	knit 2 stitches together (1 st dec'd)
MC	main color
p	purl
patt	pattern
pm	place marker
rem	remain(ing)
rep	repeat

rnd	round
ssk	slip next 2 sts individually knitwise, slip them back to left needle in this position, knit them together through the back loops (1 st dec'd)
st(s)	stitch(es)

Hat



Key

-  pattern repeat
-  with CC, knit
-  with MC, knit
-  with MC, ssk
-  with MC, k2tog

Knit, Relax, Smile, Repeat!

2021 © Universal Yarn, Inc.
www.universalyarn.com

All rights reserved. This pattern may not be reproduced for business, trade or sale.
Questions? Contact patterns@universalyarn.com