

Easter Earl

Chirp, chirp, chirp! Say hello to Easter Earl! This little hatchling is dapper and sweet. He spends each morning perfectly styling the tufts of feathers on his head and securing a colorful bowtie around his neck. He's a cheerful chick with some pep in his step. Won't you be his new best friend?



Easter Earl

Designed by Rachel Brockman

DIFFICULTY

Intermediate

SIZES

One Size

FINISHED MEASUREMENTS

Height: approx. 8" tall

MATERIALS

Rico Design Ricorumi DK Cotton (100% cotton; 25g/62.8 yds)

- 005 Vanilla (A) – 2 balls
- 024 Smokey Orange (B) – 1 ball
- 016 Orchid (C) – 1 ball

Needles: US Size 4 (3.5 mm) set of DPNs or your preferred needle for knitting small circumferences *or size needed to obtain gauge*

US Size 3 (3.25 mm) set of DPNs or your preferred needle for knitting small circumferences)

Notions: Tapestry needle, two 8.5 mm Ricorumi Buttons with Stitchable Bezel for eyes (or preferred buttons/safety eyes), crochet hook (for cast-on and attaching head tufts), Poly-fil (polyester stuffing, stitch holders or waste yarn, stitch markers

GAUGE

26 sts x 32 rnds = 4" in Stockinette stitch (St st)

Save time, check your gauge.



PATTERN NOTES

Easter Earl is knit seamlessly in the round, with the exception of the bowtie, which is knit flat. The body is knit in one piece. Then, the beak, bowtie, wings, and feet are worked separately and sewn to the body. Small tufts of scrap yarn are attached to the head with a crochet hook.

STITCH GUIDE

Adjustable Ring Cast-on

Set-up: Make a ring with the working yarn crossed over the tail.

Step 1: Using crochet hook, draw a loop through the ring.

Step 2: Yarn over hook and draw through the loop to complete the single crochet (2 sts on hook).

Rep Steps 1-2 until the correct number of sts to cast on are on the crochet hook.

Step 3: Transfer sts to your preferred needle for knitting small circumferences in the round. Divide sts evenly and join to work in the round.

Step 4: After working a few rounds, pull the tail firmly to close the ring.

2-Stitch I-Cord

With color A, cast on 2 sts to dpn. * K2, slide sts to other end of ndl and place in left hand; rep from * until required length. Break yarn leaving approx. 4" tail. Thread through rem live stitches to fasten off.

BODY

Torso

With color A, larger ndl, and using the Adjustable Ring Cast-on method, cast on 8 sts. PM and join to knit in the rnd, being careful not to twist.

Set-up Rnd 1: [K2, pm] 3 times, k2.

Set-up Rnd 2: * [Kfb] 2 times; rep from * to end – 8 sts inc'd, 16 sts.

Increase Section 1

Rnd 1: Knit.

Rnd 2 (Inc Rnd): * K1, m1, knit to 1 st bef m, m1, k1, sl m; rep from * to end – 8 sts inc'd, 24 sts.

Rep Rnds 1-2, 5 more times – 40 sts inc'd, 64 sts.

Increase Section 2

Rnds 1-3: Knit.

Rnd 4 (Inc Rnd): * K1, m1, knit to 1 st bef m, m1, k1, sl m; rep from * to end – 8 sts inc'd, 72 sts.

Rep Rnds 1-4, one more time – 8 sts inc'd, 80 sts.

Even Section

Rnds 1-15: Knit.

Decrease Section 1

Rnd 1 (Dec Rnd): * K2tog, knit to 2 sts bef m, ssk, sl m; rep from * to end – 8 sts dec'd, 72 sts.

Rnds 2-4: Knit.

Rep Rnds 1-4, 2 more times, then rep Rnd 1, one more time – 24 sts dec'd, 48 sts rem.

Stuff firmly with Poly-fil.

Decrease Section 2

Rnd 1: K2tog, knit to 2 sts bef m, ssk, sl m, k3tog, knit to 3 sts bef m, sssk, sl m, [k2tog, knit to 2 sts bef m, ssk] 2 times – 10 sts dec'd, 38 sts rem.

Rnd 2: Knit.

Rep Rnds 1-2, one more time – 28 sts rem.

Stuff firmly with Poly-fil.

Head

Increase Section 1

Rnd 1 (Inc Rnd): * K1, m1, knit to 1 st bef m, m1, k1, sl m; rep from * to end – 8 sts inc'd, 36 sts.

Rnd 2 (Inc Rnd): Knit to m, sl m, k1, m1, knit to 1 st bef m, m1, k1, sl m, knit to end – 2 sts inc'd, 38 sts.

Rnd Rnds 1-2, one more time – 10 sts inc'd, 48 sts.



Increase Section 2

Rnd 1 (Inc Rnd): * K1, m1, knit to 1 st bef m, m1, k1, sl m; rep from * to end – 8 sts inc'd, 56 sts.

Rnd 2 (Even Rnd): Knit.

Rep Rnds 1-2, 2 more times – 16 sts inc'd, 72 sts.



Even Section

Rnds 1-8: Knit.

Stuff firmly with Poly-fil.

Decrease Section

Note: I recommend stuffing with Poly-fil gradually as you decrease to ensure it isn't too difficult to stuff when you have so few stitches at the end of the head.

Rnd 1 (Dec Rnd): * K2tog, knit to 2 sts bef m, ssk, sl m; rep from * to end – 8 sts dec'd, 64 sts rem.

Rnd 2 (Even Rnd): Knit.

Rep Rnds 1-2, 2 more times – 16 sts dec'd, 48 sts rem.

Insert Eyes: Rnds 1-2 have been worked three total times. Insert Button Eyes into the fabric between the second and third markers, centered and spaced approx. 1" apart. Insert the eyes approx. two rnds below the live sts on needles.

Rep Rnds 1-2, 4 more times, then rep Rnd 1, one more time – 40 sts dec'd, 8 sts rem.

Stuff firmly with Poly-fil. Break yarn, leaving approx. 8" tail. Thread tail through rem live sts, pull taught to close.

BEAK

With color B and smaller ndl, cast on 10 sts. PM and join to knit in the rnd.

Rnd 1: Knit.

Rnd 2 (Dec Rnd): * Ssk, k1, k2tog; rep from * to end – 4 sts dec'd, 6 sts rem.

Rnd 3: Knit.

Rnd 4 (Dec Rnd): * S2KP2; rep from * to end – 4 sts dec'd, 2 sts rem.

Break yarn leaving approx. 4" tail. Thread tail through rem live stitches to fasten off.

FEET

(make two)

With color B, larger ndl, and using the Adjustable Ring Cast-on method, cast on 12 sts. PM and join to knit in the rnd, being careful not to twist.

Rnd 1: Knit.

Rnd 2: [K2, m1L, k2, m1R, k2] 2 times – 4 sts inc'd, 16 sts.

Rnd 3: Knit.

Rnd 4: [K2, m1L, k4, m1R, k2] 2 times – 4 sts inc'd, 20 sts.

Rnd 5: Knit.

Rnd 6: [K2, m1L, k6, m1R, k2] 2 times – 4 sts inc'd, 24 sts.

Rnd 7: Knit.

Rnd 8: [K2, m1L, k8, m1R, k2] 2 times – 4 sts inc'd, 28 sts.

Rnd 9: Knit.

Separate for Toes

Rnd 1: K4 sts for Toe #1, bind off next st, k4 sts for Toe #2, bind off next st, k8 sts for Toe #3, bind off next st, k4 sts for Toe #2, bind off next st, k4 sts for Toe #1 – 24 sts rem on ndl.



Toe #1

Rnd 1: K4, place next 16 sts (Toe #2 and Toe #3) on holder or waste yarn, knit last 4 sts for Toe #1, joining to work in the rnd.

Rnds 1-3: Knit.

Rnd 4: [Ssk, k2tog] 2 times – 4 sts dec'd, 4 sts rem.

Rnd 5: Knit.

Break yarn leaving approx. 6" tail. Thread tail through rem live sts to fasten off. Lightly stuff with Poly-fil.

Toe #2

Return 16 held sts to ndl and rejoin yarn.

Rnd 1: K4 Toe #2 sts, return next 8 sts (Toe #3) to holder or waste yarn, knit last 4 Toe #2 sts, joining to work in the rnd. Complete as for Toe #1.

Toe #3

Return 8 held sts to ndl and rejoin yarn.

Rnd 1: K8 and join to knit in the rnd.

Complete as for Toe #1.

Finishing Feet

After fastening off each toe, there are gaps between the first and second toe, and the second and third toes. Before closing those gaps, lightly stuff feet with Poly-fil. Use tails to sew the gaps closed.



BOWTIE

With color C and larger ndl, cast on 5 sts.

Rows 1-6: Knit.

Row 7: Ssk, k1, k2tog – 2 sts dec'd, 3 sts rem.

Row 8: Knit.

Row 9: [K1, m1] 2 times, k1 – 2 sts inc'd, 5 sts.

Rows 10-14: Knit.

Bind off all sts kwise.

Using an approx. 12" long scrap of color C, wrap the center of the Bowtie approx. 7 times, securing each end together on one side of the Bowtie. Set aside.

With color C and smaller ndl, make a 2-Stitch I-cord approx. 6¾" long.



WINGS

(make two)

Note: The Wings are also charted for your convenience.

With color A and larger ndl, cast on 20 sts. PM and join to knit in the rnd.

Rnd 1: Knit.

Rnd 2: [K4, m1R, k2, m1L, k4] 2 times – 4 sts inc'd, 24 sts.

Rnd 3: Knit.

Rnd 4: [K5, m1R, k2, m1L, k5] 2 times – 4 sts inc'd, 28 sts.

Rnd 5: Knit.

Rnd 6: [K6, m1R, k2, m1L, k6] 2 times – 4 sts inc'd, 32 sts.

Rnd 7: Knit.

Rnd 8: [K7, m1R, k2, m1L, k7] 2 times – 4 sts inc'd, 36 sts.

Rnds 9-13: Knit.

Rnd 14: [K1, ssk, k12, k2tog, k1] 2 times – 4 sts dec'd, 32 sts rem.

Rnd 15: [K1, ssk, k10, k2tog, k1] 2 times – 4 sts dec'd, 28 sts rem.

Rnd 16: [K1, ssk, k8, k2tog, k1] 2 times – 4 sts dec'd, 24 sts rem.

Rnd 17: [K1, ssk, k6, k2tog, k1] 2 times – 4 sts dec'd, 20 sts rem.

Rnd 18: [K1, ssk, k4, k2tog, k1] 2 times – 4 sts dec'd, 16 sts rem.

Rnd 19: [K1, ssk, k2, k2tog, k1] 2 times – 4 sts dec'd, 12 sts rem.

Rnd 20: [K1, ssk, k2tog, k1] 2 times – 4 sts dec'd, 8 sts rem.

Rnd 21: [Ssk, k2tog] 2 times – 4 sts dec'd, 4 sts rem.

Break yarn leaving approx. 8" tail. Thread tail through rem live sts and pull taut to close. Lightly stuff Wings with Poly-fil.

FINISHING

Assembly

Note: Use illustrations as a guide for attaching each piece. I recommend using color A when sewing each piece to the body.

Sew Beak to center of face, approx. ¼-½" below the eyes.

Using color A and tapestry needle, wrap the top corner of each eye three times to create an embroidered eyelid.

Sew the cast-on edge of each Wing to the Body, positioning them along the left and right side where the "neck" is formed (just after the final Torso decreases and the first Head increases).



Sew each Foot to the front of the Body, at approximately the bottom of the work. To ensure they are evenly spaced, center the middle toe (Toe #2) with the lines created by the increase section of the Torso.

Wrap the 2-Stitch I-cord around the neck, with each end placed at the center-front. Use the tails of the yarn to tie the ends together and secure in place. Attach the Bowtie to the center front of the Body, positioned on top of the 2-Stitch I-cord join.

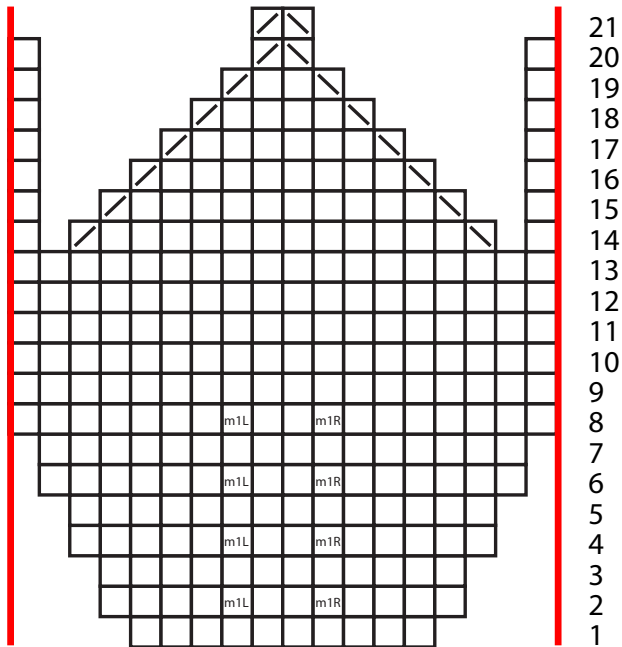
Hide all ends inside the work.

Head Tufts

Cut four 6" long strands of color A. Holding one strand as one group, fold in half and attach to the top of the head using crochet hook. Rep for each of the four strands. Trim to approx. ½-¾". By hand or using a fine comb, separate the plies of the yarn in each tuft, creating a fluffy effect.



Wings



begins as repeat of 10 sts
(repeat two times)

Key

- pattern repeat
- knit
- m1R m1R
- m1L m1L
- / ssk
- \ k2tog

Abbreviations

approx	approximately
bef	before
beg	begin(ning)
bor	beginning of round
dec('d)	decrease(d)
dpn(s)	double pointed needle(s)
inc('d)	increase(d)
k	knit
k2tog	knit 2 stitches together (1 st dec'd)
k3tog	knit 3 stitches together (2 sts dec'd)
m	marker
m1	insert left needle from front to back under horizontal strand of yarn lying between st just worked and next st, knit or purl this st through the back loop (1 st inc'd)
m1L	insert left needle from front to back under horizontal strand of yarn lying between st just worked and next st, knit or purl this st through the back loop (1 st inc'd)
m1R	insert left needle from back to front under horizontal strand of yarn lying between st just worked and next st, knit or purl this st through the front loop (1 st inc'd)
meas	measures
pm	place marker
rem	remain(ing)
rep	repeat
rnd	round
S2KP2	slip 2 stitches as if to knit 2 together, knit 1, pass 2 slipped stitches over knit stitch; centered double decreases
sc	single crochet
sl	slip
ssk	slip next 2 sts individually knitwise, slip them back to left needle in this position, knit them together through the back loops (1 st dec'd)
sssk	slip next 3 sts individually knitwise, slip them back to left needle in this position, knit them together through the back loops (2 sts dec'd)
St st	Stockinette stitch (knit on RS rows, purl on WS rows; in the rnd, knit every rnd)
st(s)	stitch(es)

