



Pattern Collection: Accessories



EKG Set

Designed by Universal Yarn Design Team

SIZE

Adult Medium

FINISHED MEASUREMENTS

Hat

Circumference: 19½"

Height: 10½"

Cowl

Circumference: 22½"

Height: 24"

Mitts

Circumference: 9"

Height: 9"

MATERIALS

Universal Yarn *Deluxe Worsted* (100% wool; 100g/220 yds)

- 31953 Neutral Grey (MC) – 2 skeins
- 12283 Holly Green (CC3) – 1 skein
- 14012 Bonsai (CC2) – 1 skein
- 14017 Blush (CC3) – 1 skein

Needles: US Size 8 (5 mm) and US Size 7 (4.5 mm) 16" circular needles and set of dpns or size needed to obtain gauge

Notions: Stitch markers, tapestry needle, stitch holder or waste yarn

GAUGE

18 sts x 36 rows = 4" in Slipped Chevrons patt with larger ndl

Save time, check your gauge.

Knit. Relax. Smile. Repeat!

2017 © Universal Yarn, Inc.

All rights reserved.

www.universalyarn.com

This pattern may not be reproduced for business, trade or sale.

STITCH GUIDE

K1, P1, Ribbing

(even number of sts)

Rnd 1: * K1, p1; rep from * to end.

Rep Rnd 1 for patt.

Slipped Chevrons

(multiple 4 sts)

Rnd 1: * Sl 3, k1; rep from * to end.

Rnd 2: * K1, sl 1, k2; rep from * to end.

Rnds 3 and 4: Knit.

Rep these 4 rnds for patt.

Stripe Pattern

Rnds 1-4: MC

Rnds 5-8: CC3

Rnds 9-12: CC2

Rnds 13-16: CC1

Rep these 16 rnds for patt.

PATTERN NOTES

All pieces are worked from the bottom up in the round. All stitches are slipped purlwise with yarn held in back.

HAT

With MC and smaller ndl, cast on 88 sts. Pm and join to work in the rnd, being careful not to twist stitches. Work in K1, P1, Ribbing until piece meas approx. 2" from cast-on edge. With larger ndl and MC, beg Slipped Chevrons and Stripe Pattern. Work even until piece meas approx. 9" from cast-on edge, end having just worked Rnd 4 of Slipped Chevrons and Rnd 16 of Stripe Pattern.

Shape Crown

(Note – switch to dpns or preferred small circumference method when needed.)

Rnd 1 (dec rnd, MC): *Sl 3, k1, sl 2, k2tog; rep from * to end – 11 sts dec'd, 77 sts rem.

Rnd 2: * K1, sl 1, k3, sl 1, k1; rep from * to end.

Rnds 3 and 4: Knit.

Rnd 5 (dec rnd, CC3): * Sl 3, k2, k2tog; rep from * to end – 11 sts dec'd, 66 sts rem.

Rnd 6: * K1, sl 1, k4; rep from * to end.

Rnds 7 and 8: Knit.

Rnd 9 (dec rnd, CC2): * Sl 3, k1, k2tog; rep from * to end – 11 sts dec'd, 55 sts rem.

Rnd 10: * K1, sl 1, k3; rep from * to end.

Rnds 11 and 12: Knit.

Rnd 13 (dec rnd, CC1): * Sl3, k2tog; rep from * to end – 11 sts dec'd, 44 sts rem.

Rnd 14: * K1, sl 1, k2; rep from * to end.

Rnds 15 and 16: Knit.

Rnd 17 (dec rnd, MC): * Sl 2, k2tog; rep from * to end – 11 sts dec's, 33 sts rem.

Rnd 18: * K1, sl 1, k1; rep from * to end.

Rnd 19 (dec rnd): * K1, k2tog; rep from * to end – 11 sts dec'd, 22 sts rem.

Rnd 20 (dec rnd): * K2tog; rep from * to end – 11 sts dec'd, 11 sts rem.

Rnd 21 (dec rnd): *K2tog; rep from * to last st, k1 – 5 sts dec'd, 6 sts rem.

Break yarn leaving at least 6" tail, thread through live sts and pull tight to secure.

COWL

With CC3 and smaller ndl, cast on 100 sts. Pm and join to work in the rnd, being careful not to twist stitches. Work 4 rnds even in garter st, switch to larger ndl, work 4 rnds even in St st. Beg Slipped Chevrons at Rnd 1 and Stripe Pattern at Rnd 9, work even until piece meas approx. 23¼" from cast-on edge or to desired height, end having just worked Rnd 4 of Slipped Chevrons and Stripe Pattern.

Work 4 rnds even in St st, switch to smaller ndl, work 4 rnds even in garter st, loosely bind off all sts.

MITTS

With smaller dpns and MC, cast on 40 sts. Divide sts evenly between ndls, pm and join to work in the rnd, being careful not to twist stitches. Work even in K1, P1, Ribbing until piece meas approx. 2¼" from cast-on edge. Switch to larger dpns and beg Slipped Chevrons and Stripe Pattern. Work even until piece meas approx. 5½" from cast-on edge, end having just worked Rnd 4 of Slipped Chevrons and Rnd 12 of Stripe Pattern.

Knit. Relax. Smile. Repeat!

2017 © Universal Yarn, Inc.

All rights reserved.

www.universalyarn.com

This pattern may not be reproduced for business, trade or sale.

Shape Thumbs

Left Mitt

Rnd 1 (inc rnd, CC1): Work even in est'd patts across first 12 sts, pm, m1, pm, work even to end – 1 st inc'd, 41 sts.

Right Mitt

Rnd 1 (inc rnd, CC1): Work even in est'd patts across first 28 sts, pm, m1, pm, work even to end – 1 st inc'd, 41 sts.

Left and Right Mitts

Rnd 2: Work even to m, sm, k1, sm, work even to end.

Rnd 3 (inc rnd): Work even to m, sm, m1, k1, m1, sm, work even to end – 2 sts inc'd, 43 sts.

Rnd 4: Work even to m, sm, k3, sm, work even to end.

Rnd 5 (inc rnd, MC): Work even to m, sm, m1, sl 3, m1, sm, work even to end – 2 sts inc'd, 45 sts.

Rnd 6: Work even to m, sm, k2, sl 1, k2, sm, work even to end.

Rnd 7 (inc rnd): Work even to m, sm, m1, k5, m1, sm, work even to end – 2 sts inc'd, 47 sts.

Rnd 8: Work even to m, sm, k7, sm, work even to end.

Rnd 9 (inc rnd, CC3): Work even to m, sm, m1, sl 1, k1, sl 3, k1, sl 1, m1, sm, work even to end – 2 sts inc'd, 49 sts.

Rnd 10: Work even to m, sm, k4, sl 1, k4, sm, work even to end.

Rnd 11 (inc rnd): Work even to m, sm, m1, k9, m1, sm, work even to end – 2 sts inc'd, 51 sts.

Rnd 12: Work even to m, sm, k11, sm, work even to end.

Rnd 13 (inc rnd, CC2): Work even to m, sm, m1, [sl 3, k1] twice, sl 3, m1, sm, work even to end – 2 sts inc'd, 53 sts.

Next Rnd: Work even to m, remove m, place next 13 sts on stitch holder or waste yarn, remove m, work even to end, 40 sts rem.

Hand

Cont even in est'd patt until piece meas approx. 7 ¼" from cast-on edge, end having just worked Rnd 4 of Slipped Chevrons and Stripe Pattern. With MC and smaller dpns, work even in K1, P1, Ribbing until rib meas approx. 1¼", bind off loosely in rib.

Thumb

Place Thumb sts on larger dpns, join CC2.

Rnd 1: K2, sl 1, [k3, sl 1] twice, k1, pick up and k 1 st, pm to indicate beg/end of rnd – 14 sts.

Rnds 2 and 3: Knit.

Rnd 4 (MC): * K1, sl 3; rep from * to last 2 sts, k2.

Rnd 5: K2, *sl 1, k3; rep from * to end.

Switch to smaller dpns, cont with MC, work 6 rnds even in K1, P1, Ribbing, bind off loosely in rib.

FINISHING

Wash and block to Finished Measurements, weave in all ends.

Abbreviations

approx	approximately
beg	begin(ning)
CC	contrast color
cont	continue
dec('d)	decrease(d)
dpn(s)	double pointed needle(s)
est'd	established
garter st	in the rnd, knit one rnd, purl one rnd
inc('d)	increase(d)
k	knit
k2tog	knit 2 stitches together (1 st dec'd)
m	marker
m1	insert left needle from front to back under horizontal strand of yarn lying between st just worked and next st, knit or purl this st through the back loop (1 st inc'd)
MC	main color
meas	measures
ndl	needle
patt	pattern
pm	place marker
rem	remain(ing)
rep	repeat
rnd	round
sl	slip
st(s)	stitch(es)
St st	Stockinette stitch (knit on RS rows, purl on WS rows; in the rnd, knit every rnd)

Knit. Relax. Smile. Repeat!

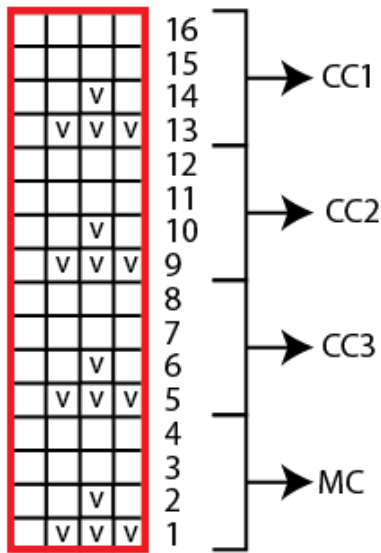
2017 © Universal Yarn, Inc.

All rights reserved.

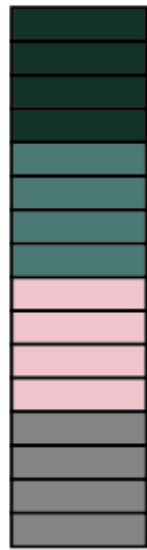
www.universalyarn.com

This pattern may not be reproduced for business, trade or sale.

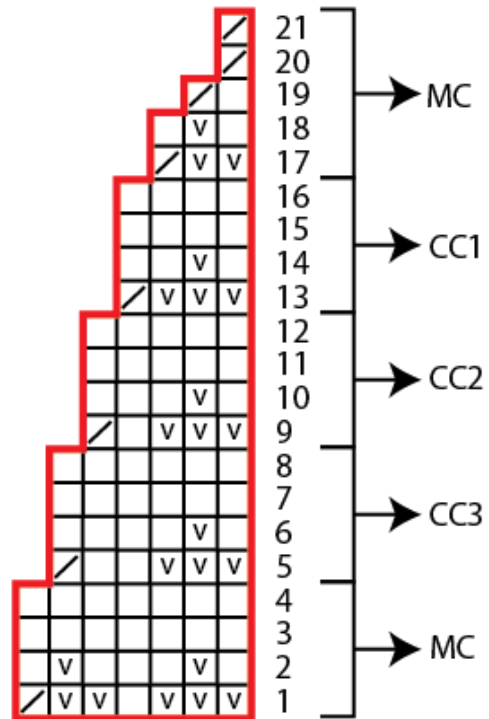
Slipped Chevrons



Stripe Pattern



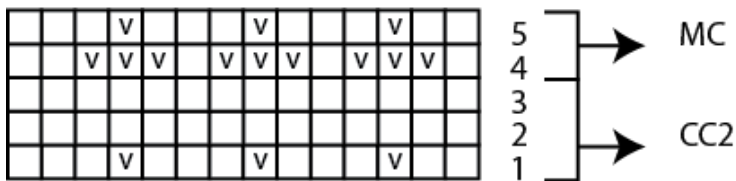
Crown Shaping



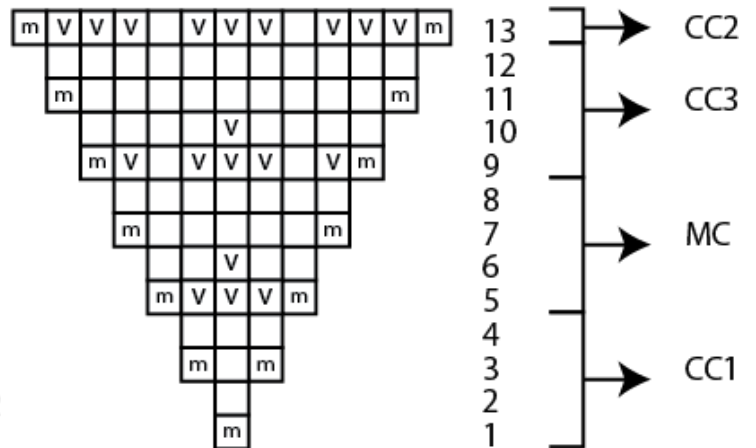
Key

- Patt rep
- K
- v Sl
- / K2tog
- m M1

Thumb



Thumb Shaping



Knit. Relax. Smile. Repeat!

2017 © Universal Yarn, Inc.

All rights reserved.

www.universalyarn.com

This pattern may not be reproduced for business, trade or sale.