



Pattern Collection: Women



Dusk Poncho

Designed by Rachel Brockman

SIZES

One Size

FINISHED MEASUREMENTS

Rectangle Width: 27"

Rectangle Length: 40"

Assembled Width: 44"

MATERIALS

Universal Yarn Colorburst (65% superwash fine merino, 35% acrylic; 200g/660 yds)

- 107 Lofoten – 2 balls

Needles: US Size 7 (4.5 mm) 24" circular or longer (to accommodate large number of sts) *or size needed to obtain gauge*

Notions: Tapestry needle, stitch markers, cable needle (cn)

GAUGE

21 sts x 27 rows = 4" in Cable and Lace patt

Save time check your gauge.

For questions about this pattern, please contact patterns@universalyarn.com.

Knit. Relax. Smile. Repeat!

2019 © Universal Yarn, Inc.

All rights reserved.

www.universalyarn.com

This pattern may not be reproduced for business, trade or sale.

PATTERN NOTES

The Dusk Poncho is the perfect 'throw it on' accessory to finish your outfits for chilly days. This poncho is crafted in our stunning *Colorburst* yarn, which creates its own tonal stripes when knit. Between that and the graceful cable and lace pattern, this one is sure to be the envy of your knitting group!

This poncho is knit flat and seamed. It is comprised of two identical rectangles. An illustration is provided to assist with seaming.

STITCH GUIDE

2x2 Left Cross (LC)

Slip 2 sts to cn and hold in front, k2 from LH ndl, k2 from cn.

2x2 Right Cross (RC)

Slip 2 sts to cn and hold in back, k2 from LH ndl, k2 from cn.

Cable and Lace

(Multiple of 31 sts)

Row 1 (RS): * K2, 2x2 LC, p3, k4tog, [yo, k1] 5 times, yo, ssssk, p3, 2x2 RC, k2; rep from * to end.

WS Rows 2-6: * K2, p4, k3, p13, k3, p4, k2; rep from * to end.

Row 3: * K6, p3, k4tog, [yo, k1] 5 times, yo, ssssk, p3, k6; rep from * to end.

Row 5: Rep Row 3.

Rep Rows 1-6 for patt.

PONCHO

Rectangle *(Make two)*

Note: You may wish to place markers between each pattern repeat to help you stay on track.

Cast on 124 sts.

Row 1 (RS): Work Row 1 of Cable and Lace patt to end. Patt will be repeated 4 times across each row.

Row 2 (WS): Work Row 2 of Cable and Lace patt to end.

Cont as est'd through Row 6 of Cable and Lace patt, then rep Rows 1-6 of patt until piece meas 40" from cast-on edge, ending with a WS row.

Bind off all sts in patt.

FINISHING

Gently wash and block to finished measurements. Weave in ends. Sew a short edge of each Rectangle to long edge of opposite rectangle, using illustration as a guide. Rep once more. Weave in rem ends.

Abbreviations

circ	circular
cn	cable needle
cont	continue
est'd	established
k	knit
k4tog	knit 4 stitches together (3 sts dec'd)
LH	left hand
meas	measures
p	purl
patt	pattern
rep	repeat
RS	right side
sssk	slip next 4 sts individually knitwise, slip them back to left needle in this position, knit them together through the back loops (3 sts dec'd)
st(s)	stitch(es)
WS	wrong side
yo	yarn over

Knit. Relax. Smile. Repeat!

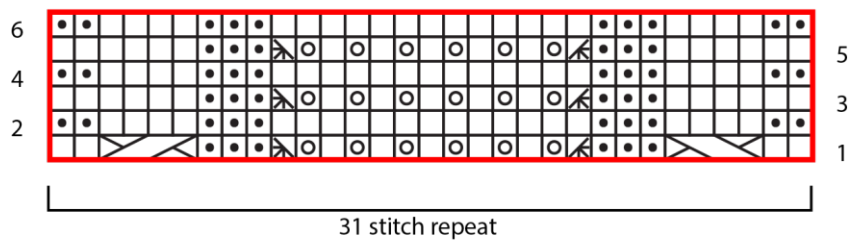
2019 © Universal Yarn, Inc.

All rights reserved.

www.universalyarn.com

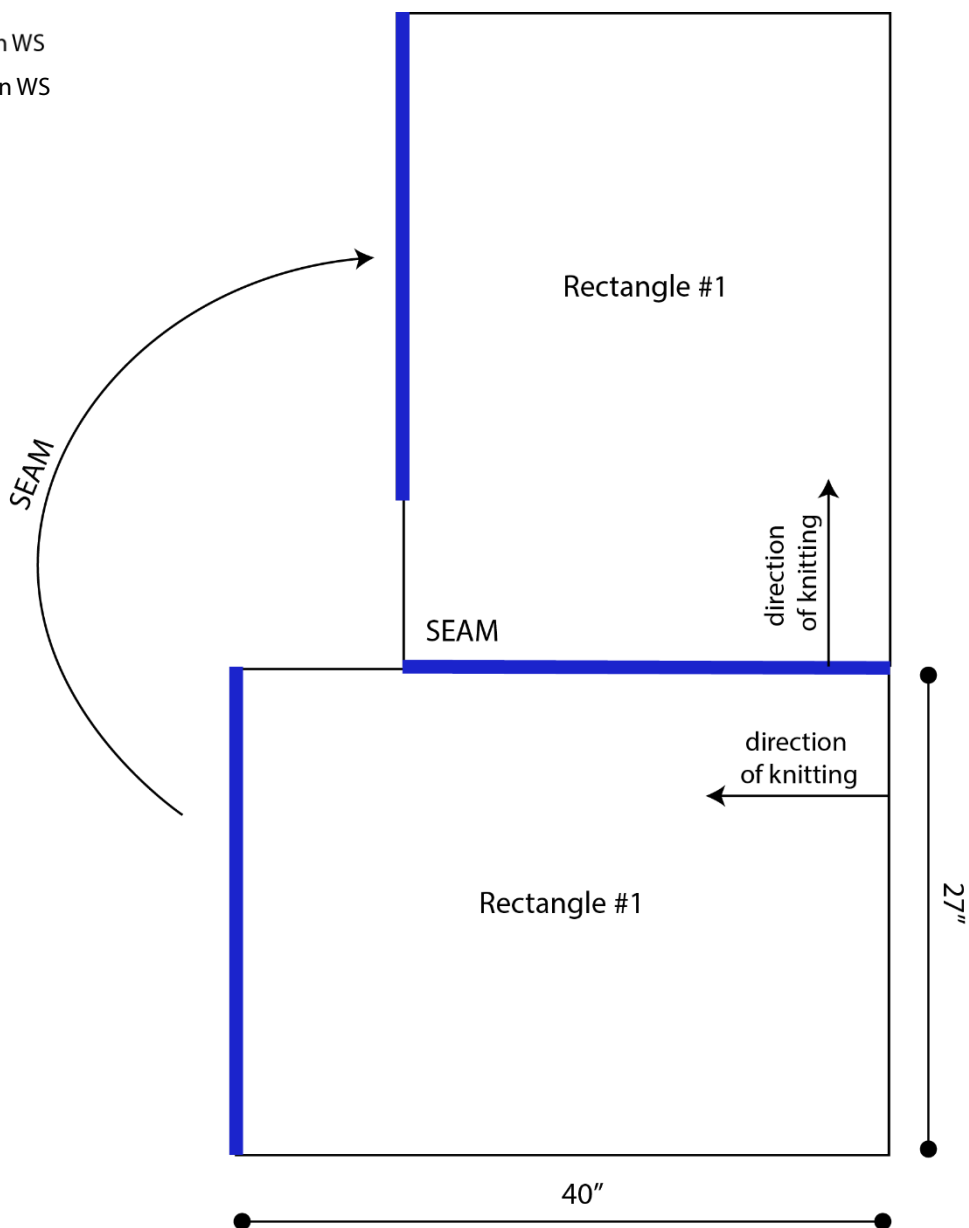
This pattern may not be reproduced for business, trade or sale.

Cable and Lace



Key

- pattern repeat
- knit on RS, purl on WS
- purl on RS, knit on WS
- / ssssk
- / k4tog
- yo
- / \ 2x2 LC
- \ / 2x2 RC



Knit. Relax. Smile. Repeat!

2019 © Universal Yarn, Inc.

All rights reserved.

www.universalyarn.com

This pattern may not be reproduced for business, trade or sale.