



## Pattern Collection: Women



### Dragonfly Pullover

Designed by Universal Yarn Design Team

#### SIZES

Extra Small (Small, Medium, Large, 1X, 2X, 3X, 4X, 5X)

Shown in Small size with 3" of positive ease.

#### FINISHED MEASUREMENTS

**Bust:** 32¼ (36, 39¾, 43½, 47, 52½, 56¼, 60, 63¾)"

**Length:** 23 (23½, 24, 24¾, 25¼, 25¾, 26½, 27, 27½)"

#### MATERIALS

**Wisdom Yarns Angora Lace** (60% superwash fine merino, 30% nylon, 10% angora; 100g/462 yds)

- 212 Denim – 3 (3, 4, 4, 4, 5, 5, 5, 6) skeins

**Needle:** US Size 4 (3.5 mm) 16" circular, and set of DPNS or your preferred needle for knitting small circumferences *or size needed to obtain gauge*

US Size 3 (3.25 mm) 16" circular and preferred needle for knitting flat

**Notions:** Tapestry needle, stitch markers, stitch holder or waste yarn

#### GAUGE

26 sts x 34 rnds = 4" in Stockinette stitch (St st) using larger ndl

**Save time, check your gauge.**

*Knit. Relax. Smile. Repeat!*

2020 © Universal Yarn, Inc.

All rights reserved.

[www.universalyarn.com](http://www.universalyarn.com)

This pattern may not be reproduced for business, trade or sale.

For questions about this pattern, please contact [patterns@universalyarn.com](mailto:patterns@universalyarn.com).

### PATTERN NOTES

The Dragonfly Pullover is a delightful three-season piece. It features drop shoulders and a delicate lace hem. Knit up in dreamy Angora Lace, this top is light enough to keep you comfortable on mild autumn and spring days, yet warm enough to keep you comfortable throughout winter.

The body of this sweater is knit in the round from the bottom up. The front and back are separated at the underarm and worked flat. The sleeves are knit flat and sewn to the body. Stitches for the neck edging are picked up and worked in the round.

### STITCH GUIDE

#### K1, P1 Rib

*(even number of sts, worked in the rnd)*

**Rnd 1:** \* K1, p1; rep from \* to end.

Rep Rnd 1 for patt.

#### K1, P1 Rib

*(odd number of sts, worked flat)*

**Row 1 (RS):** K1, \*p1, k1; rep from \* to end.

**Row 2 (WS):** \* P1, k1; rep from \* to last st, p1.

Rep Rows 1-2 for patt.

#### Lace

*(multiple of 12 sts, worked in the rnd)*

**Rnd 1:** \* K3, k2tog, yo, p1, yo, ssk, k4; rep from \* to end.

**Rnd 2:** \* K2, k2tog, yo, k1, p1, k1, yo, ssk, k3; rep from \* to end.

**Rnd 3:** \* K1, k2tog, yo, k2, p1, k2, yo, ssk, k2; rep from \* to end.

**Rnd 4:** \* K2tog, yo, k3, p1, k3, yo, ssk, k1; rep from \* to end.

**Rnd 5:** \* K3, k2tog, yo, k1, yo, ssk, k3, p1; rep from \* to end.

**Rnd 6:** \* K2, k2tog, yo, k3, yo, ssk, k2, p1; rep from \* to end.

**Rnd 7:** \* K1, k2tog, yo, k5, yo, ssk, k1, p1; rep from \* to end.

**Rnd 8:** \* K2tog, yo, k7, yo, ssk, p1; rep from \* to end.

**Rnd 9:** \* Ssk, k3, yo, k1, yo, k3, k2tog, p1; rep from \* to end.

**Rnd 10:** \* K11, p1; rep from \* to end.

**Rnds 11-14:** Rep Rnds 9-10, 2 times.

**Rnd 15:** \* Yo, ssk, k7, k2tog, yo, p1; rep from \* to end.

**Rnd 16:** \* K1, yo, ssk, k5, k2tog, yo, k1, p1; rep from \* to end.

**Rnd 17:** \* K2, yo, ssk, k3, k2tog, yo, k2, p1; rep from \* to end.

**Rnd 18:** \* K3, yo, ssk, k1, k2tog, yo, k3, p1; rep from \* to end.

**Rnd 19:** \* Yo, ssk, k3, p1, k3, k2tog, yo, k1; rep from \* to end.

**Rnd 20:** \* K1, yo, ssk, k2, p1, k2, k2tog, yo, k2; rep from \* to end.

**Rnd 21:** \* K2, yo, ssk, k1, p1, k1, k2tog, yo, k3; rep from \* to end.

**Rnd 22:** \* K3, yo, ssk, p1, k2tog, yo, k4; rep from \* to end.

**Rnd 23:** \* Yo, k3, ssk, p1, k2tog, k3, yo, k1; rep from \* to end.

**Rnd 24:** \* K5, p1, k6; rep from \* to end.

**Rnds 25-28:** Rep Rnds 23-24, 2 times.

Rep Rnds 1-28 for patt.

### SWEATER

#### BODY

##### Hem

With larger circ ndl, cast on 216 (240, 264, 288, 312, 348, 372, 396, 420) sts. PM and join to knit in the rnd, being careful not to twist.

**Rnd 1:** Work Rnd 1 of Lace patt to end. Patt will be repeated 18 (20, 22, 24, 26, 29, 31, 33, 35) times across each rnd.

**Rnd 2:** Work Rnd 2 of Lace patt to end.

Cont as est'd through Rnd 28 of patt, then rep Rnds 1-21 of patt, 1 more time.

##### Main Sweater

Work even in St st for 1 (1, 1, 1¼, 1¼, 1¼, 1½, 1½, 1½)”.

##### Shape Waist

**Set-up Rnd:** K108 (120, 132, 133, 156, 174, 186, 198, 210) sts, pm for side, knit to end.

*Knit. Relax. Smile. Repeat!*

2020 © Universal Yarn, Inc.

All rights reserved.

[www.universalyarn.com](http://www.universalyarn.com)

This pattern may not be reproduced for business, trade or sale.

**Rnd 1 (Dec Rnd):** Knit to m, sl m, ssk, knit to last 2 sts, k2tog – 2 sts dec'd, 218 (238, 262, 286, 310, 346, 370, 394, 418) sts rem.

**Rnds 2-24:** Knit.

Rep Rnds 1-24, 2 more times – 4 sts dec'd, 210 (234, 258, 282, 306, 342, 366, 390, 414) sts rem.

Work even in St st until piece meas 17 (17, 17, 17¼, 17¼, 17¼, 17½, 17½, 17½)" from cast-on edge.

### Front

*Note: The Front and Back are separated on the follow row, then each is worked flat.*

**Row 1 (RS):** K105 (117, 129, 141, 153, 171, 183, 195, 207) Front sts, turn. Place rem 105 (117, 129, 141, 153, 171, 183, 195, 207) Back sts on holder or waste yarn.

**Row 2 (WS):** Purl.

Rep Rows 1-2 until piece meas 2¼ (2¾, 3¼, 3¾, 4¼, 4¾, 5½, 5¾, 6¼)" from Front/Back separation.

### Shape Front Neck

**Row 1 (RS):** K46 (52, 58, 64, 70, 79, 85, 91, 97) Left Front sts, bind off center 13 sts, k46 (52, 58, 64, 70, 79, 85, 91, 97) Right Front sts. Place Left Front sts on holder or waste yarn.

### Right Front

Work a WS row even.

Bind off 3 sts at the beg of the next 3 RS rows, 2 sts at the beg of the foll 2 RS rows, and 1 st at the beg of the foll 7 RS rows – 26 (32, 38, 44, 50, 59, 65, 71, 77) sts rem.

Work even in St st until piece meas 6 (6½, 7, 7½, 8, 8½, 9, 9½, 10)" from Front/Back separation, ending with a WS row. Place sts on holder or waste yarn. Return Left Front sts to ndl.

### Left Front

Bind off 3 sts at the beg of the next 3 WS rows, 2 sts at the beg of the foll 2 WS rows, and 1 st at the beg of the foll 7 WS rows – 26 (32, 38, 44, 50, 59, 65, 71, 77) sts rem.

Work even in St st until piece meas 6 (6½, 7, 7½, 8, 8½, 9, 9½, 10)" from Front/Back separation, ending with a WS row. Place sts on holder or waste yarn. Return Back sts to ndl.

### Back

**Row 1 (RS):** Knit.

**Row 2 (WS):** Purl.

Rep Rows 1-2 until piece meas 4 (4½, 5, 5½, 6, 6½, 7, 7½, 8)" from Front/Back separation.

### Shape Back Neck

**Row 1 (RS):** K44 (50, 56, 62, 68, 77, 83, 89, 95) Right Back sts, bind off center 17 sts, k44 (50, 56, 62, 68, 77, 83, 89, 95) Left Back sts. Place Right Back sts on holder or waste yarn.

### Left Back

**WS Rows 1-7:** Purl.

**Row 2 (RS):** Bind off 6, cont as est'd to end – 38 (44, 50, 56, 62, 71, 77, 83, 89) sts rem.

**Row 4:** Bind off 5, cont as est'd to end – 33 (39, 45, 51, 57, 66, 72, 78, 84) sts rem.

**Row 6:** Bind off 4, cont as est'd to end – 29 (35, 41, 47, 53, 62, 68, 74, 80) sts rem.

**Row 8:** Bind off 2, cont as est'd to end – 27 (33, 39, 45, 51, 60, 66, 72, 78) sts rem.

**Row 10:** Bind off 1, cont as est'd to end – 26 (32, 38, 44, 50, 59, 65, 71, 77) sts rem.

Work even in St st until piece meas 6 (6½, 7, 7½, 8, 8½, 9, 9½, 10)" from Front/Back separation, ending with a WS row. Place sts on holder or waste yarn. Return Right Back sts to ndl.

### Right Back

**Row 1 (WS):** Bind off 6, cont as est'd to end – 38 (44, 50, 56, 62, 71, 77, 83, 89) sts rem.

**RS Rows 2-8:** Knit.

**Row 3:** Bind off 5, cont as est'd to end – 33 (539, 45, 51, 57, 66, 72, 78, 84) sts rem.

**Row 5:** Bind off 4, cont as est'd to end – 29 (35, 41, 47, 53, 62, 68, 74, 80) sts rem.

**Row 7:** Bind off 2, cont as est'd to end – 27 (33, 39, 45, 51, 60, 66, 72, 78) sts rem.

**Row 9:** Bind off 1, cont as est'd to end – 26 (32, 38, 44, 50, 59, 65, 71, 77) sts rem.

Work even in St st until piece meas 6 (6½, 7, 7½, 8, 8½, 9, 9½, 10)" from Front/Back separation, ending with a WS row. Place sts on holder or waste yarn.

### SLEEVES

#### Cuff

With smaller ndl for working flat, cast on 57 (57, 57, 59, 59, 59, 61, 61, 61) sts.

*Knit. Relax. Smile. Repeat!*

2020 © Universal Yarn, Inc.

All rights reserved.

[www.universalyarn.com](http://www.universalyarn.com)

This pattern may not be reproduced for business, trade or sale.

Work in K1, P1 Rib until piece meas  $\frac{3}{4}$ " from cast-on edge, ending with a WS row. Change to larger ndl for working flat.

### Main Sleeve

**Row 1 (RS):** Knit.

**Row 2 (WS):** Purl.

**Rows 3-4:** Rep Rows 1-2.

### Shape Sleeve

**Inc Row:** K1, m1L, knit to last st, m1R, k1 – 2 sts inc'd, 59 (59, 59, 61, 61, 61, 63, 63, 63) sts.

Rep Inc Row every 8 (6, 4, 4, 4, 2, 2, 2, 2) rows, 7 (8, 3, 9, 21, 4, 8, 14, 22) more times, then rep Inc Row every 10 (8, 6, 6, 6, 4, 4, 4, 4) rows, 3 (5, 13, 9, 1, 21, 19, 16, 12) times – 20 (26, 32, 36, 44, 50, 54, 60, 68) sts inc'd, 79 (85, 91, 97, 105, 111, 117, 123, 131) sts.

Work even in St st until piece meas  $14\frac{1}{4}$ " from cast-on edge, ending with a WS row. Bind off all sts.

### FINISHING

Gently wash and block to finished measurements. Weave in ends. With RS facing tog, join Right Back and Right Front shoulders using the three-needle bind-off. Rep for Left Back and Left Front shoulders. Sew Sleeves to Body. Sew Sleeve seams.

### Neck Edging

With smaller 16" circ and RS facing, beg at Right shoulder, pick up and knit 63 sts evenly along Back Neck edge and 67 sts evenly along Front Neck edge – 130 sts. PM and join to knit in the rnd. Work in K1, P1 Rib until piece meas  $\frac{3}{4}$ " from picked-up edge. Bind off all sts in patt. Weave in rem ends.

### Abbreviations

<b>beg</b>	begin(ning)
<b>circ</b>	circular
<b>cont</b>	continue
<b>dec('d)</b>	decrease(d)
<b>est'd</b>	established
<b>foll</b>	follow
<b>inc('d)</b>	increase(d)
<b>k</b>	knit
<b>k2tog</b>	knit 2 stitches together (1st dec'd)

<b>m</b>	marker
<b>m1L</b>	insert left needle from front to back under horizontal strand of yarn lying between st just worked and next st, knit or purl this st through the back loop (1 st inc'd)
<b>m1R</b>	insert left needle from back to front under horizontal strand of yarn lying between st just worked and next st, knit or purl this st through the front loop (1 st inc'd)
<b>meas</b>	measures
<b>ndl</b>	needle
<b>p</b>	purl
<b>patt</b>	pattern
<b>pm</b>	place marker
<b>rem</b>	remain(ing)
<b>rep</b>	repeat
<b>rnd</b>	round
<b>RS</b>	right side
<b>sl</b>	slip
<b>ssk</b>	slip next 2 sts individually knitwise, slip them back to left needle in this position, knit them together through the back loops (1 st dec'd)
<b>St st</b>	Stockinette stitch (knit on RS rows, purl on WS rows; in the rnd, knit every rnd)
<b>st(s)</b>	stitch(es)
<b>WS</b>	wrong side
<b>yo</b>	yarn over

*Knit. Relax. Smile. Repeat!*

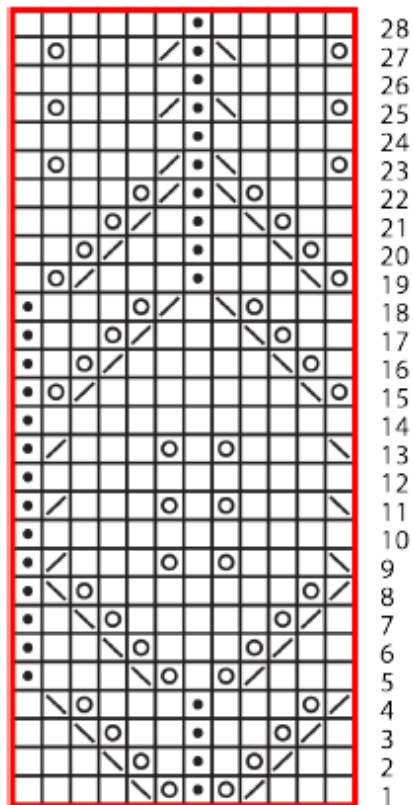
2020 © Universal Yarn, Inc.

All rights reserved.

[www.universalyarn.com](http://www.universalyarn.com)

This pattern may not be reproduced for business, trade or sale.

# Lace



## Key

- pattern repeat
- knit
- purl
- yo
- \ ssk
- / k2tog

┌──────────────────┐  
12 stitch repeat

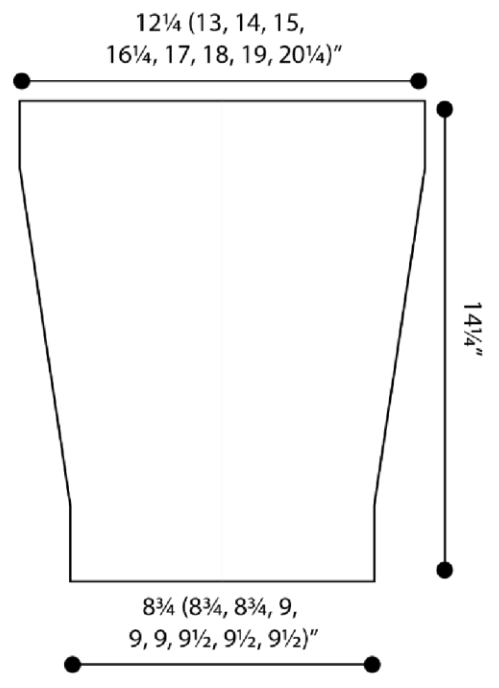
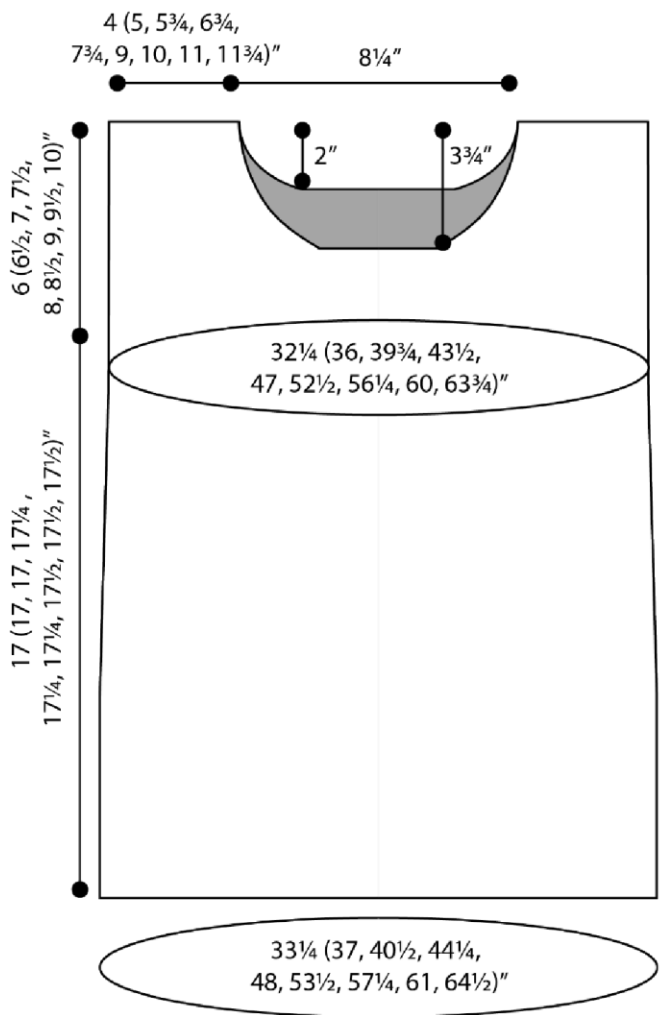
*Knit. Relax. Smile. Repeat!*

2020 © Universal Yarn, Inc.

All rights reserved.

[www.universalyarn.com](http://www.universalyarn.com)

This pattern may not be reproduced for business, trade or sale.



*Knit. Relax. Smile. Repeat!*

2020 © Universal Yarn, Inc.  
 All rights reserved.  
 www.universalyarn.com

This pattern may not be reproduced for business, trade or sale.