



PATTERN COLLECTION

Accessories



Draft Scarves

Designed by Rachel Brockman

DIFFICULTY

Easy

SIZES

Small (Large)

FINISHED MEASUREMENTS

Length (excluding fringe): 63 (76)"

Width: 6½ (10½)"

MATERIALS

Fibra Natura *Unity* (36% wool, 28% cotton, 18% linen, 18% bamboo; 100g/262 yds)

Small Size

- 103 Sage - 1 skein

Large Size

- 110 Darkness - 2 skeins

Needle: US Size 10 (6 mm) straight (or your preferred needle for knitting flat) or size needed to obtain gauge

Notions: Tapestry needle, crochet hook (for attaching fringe)

GAUGE

15 sts x 12 rows = 4" in Openwork patt

Save time, check your gauge.

Knit, Relax, Smile, Repeat!

2021 © Universal Yarn, Inc.

www.universalyarn.com

All rights reserved. This pattern may not be reproduced for business, trade or sale.

Questions? Contact patterns@universalyarn.com

PATTERN NOTES

The Draft Scarves are lightweight and breezy, making them the perfect summer accessories. The thick-thin, somewhat rustic characteristics of Unity create interest and texture in the mesh pattern. The design is finished off with fringe on each end for a fun, boho vibe.

The Draft Scarves are knit flat on the bias.

STITCH GUIDE

Openwork

(multiple of 2 sts, plus 6)

Row 1 (RS): K1, yo, k1, * yo, k2tog; rep from * to last 4 sts, yo, k3tog, k1.

Row 2 (WS): K1, yo, p2tog, * yo, p2tog; rep from * to last 3 sts, yo, p2tog, k1.

Rep Rows 1-2 for patt.

SCARF

Cast on 24 (40) sts.

Work in Openwork patt until piece meas 63 (76)" from cast-on edge, ending with Row 2 of patt.

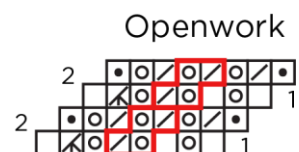
Loosely bind off all sts.

FINISHING

Weave in ends but do not trim. Wet or steam block, stretching to enhance lace. Once piece is fully dry, trim ends close to work.

Fringe

Cut 120 (190) 15" strands of yarn. Holding 5 strands together as 1 group, attach 12 (19) groups evenly across each end of Scarf using crochet hook (approx. 1 group every 1/2"). Trim Fringe to 7".



Key

- pattern repeat
- knit on RS, purl on WS
- yo
- k2tog on RS, p2tog on WS
- k3tog
- purl on RS, knit on WS



Abbreviations

approx	approximately
k	knit
k2tog	knit 2 stitches together (1 st dec'd)
k3tog	knit 3 stitches together (2 sts dec'd)
meas	measures
p	purl
p2tog	purl 2 sts together (1 st dec'd)
patt	pattern
rep	repeat
RS	right side
st(s)	stitch(es)
WS	wrong side
yo	yarn over

Knit, Relax, Smile, Repeat!

2021 © Universal Yarn, Inc.

www.universalyarn.com

All rights reserved. This pattern may not be reproduced for business, trade or sale.

Questions? Contact patterns@universalyarn.com