



Pattern Collection: Women



Double Cable Poncho

Designed by Universal Yarn Design Team

SIZE

One size fits most

FINISHED MEASUREMENTS

Each Rectangle: 22" x 28"

Assembled: 39" wide x 33" tall

MATERIALS

Universal Yarn Major (100% acrylic;
200g/328 yds)

- 113 Santa Fe – 3 skeins

Needles: US Size 10 (6 mm) straight *or*
size needed to obtain gauge

Notions: Tapestry needle, cable needle
(cn), stitch markers, fringe twister
(optional)

GAUGE

12 sts x 20 rows = 4" in Moss Stitch patt

19-st Cable Panel = 3¼" wide

Save time, check your gauge.

Knit, Relax, Smile, Repeat!

2016 © Universal Yarn, Inc.

All rights reserved.

www.universalyarn.com

This pattern may not be reproduced for business, trade or sale.

STITCH GUIDE

2x2x2 Right Cross (RC): Sl next 4 sts to cn and hold in back, k2 from left ndl, return the 2 purl sts to left needle, p2, k2 from cn.

Cable Panel

(worked over 19 sts)

Row 1 (RS): [P2, k2] 2 times, p3, [k2, p2] 2 times.

Row 2 (WS): [K2, p2] 2 times, k3, [p2, k2] 2 times.

Rows 3-4: Rep Rows 1-2.

Row 5: [P2, k2] 2 times, p3, 2x2x2 RC, p2.

Row 6: Rep Row 2.

Rows 7-8: Rep Rows 1-2.

Row 9: P2, 2x2x2 RC, p3, [k2, p2] 2 times.

Row 10: Rep Row 2.

Rep Rows 3-10 for patt.

Moss Stitch

(even number of sts)

Rows 1-2: * K2, p2; rep from * to end.

Rows 3-4: * P2, k2; rep from * to end.

Rep Rows 1-4 for patt.

PATTERN NOTES

This Poncho is made of 2 identical rectangles. Each rectangle is knit separately. One short end of each rectangle is sewn to a portion of the long end of the other rectangle.

PONCHO

Side (make 2)

Cast on 92 sts. Knit 6 rows.

Set-up row 1 (RS): K3, pm, k1, work Row 1 of Cable Panel over 19 sts, k1, pm, work Row 1 of Moss Stitch patt over 44 sts, pm, k1, work Row 1 of Cable Panel over 19 sts, k1, pm, k3.

Set-up row 2 (WS): K3, sl m, p1, work Row 2 of Cable Panel over 19 sts, p1, sl m, work Row 2 of Moss Stitch patt to m, p1, work Row 2 of Cable Panel over 19 sts, p1, sl m, k3.

Cont in patt as est'd until piece meas 27", ending with WS row. Knit 6 rows. Bind off all sts.

FINISHING

Block pieces to finished measurements. Sew a short end of each Rectangle to part of a long side of the other Rectangle, using diagram as a guide.

Fringe

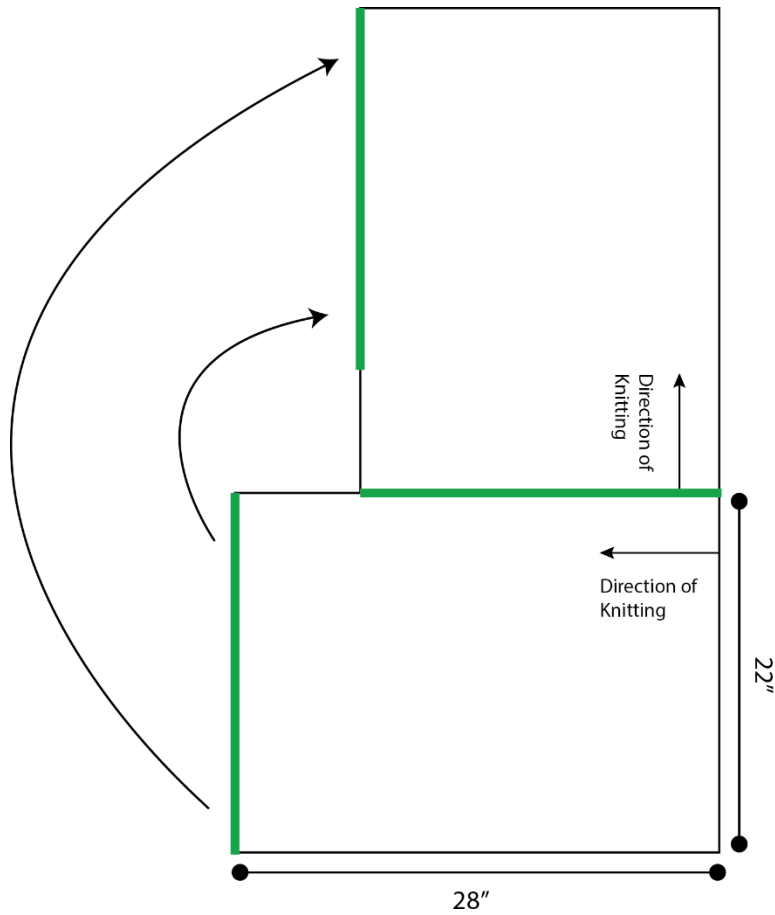
Cut 272, 14" pieces of yarn. Holding 2 strands together as one group of fringe, attach each group to entire outer perimeter of Poncho, spaced approximately 1" apart. With each set of fringe, make twisted fringe. See <https://www.youtube.com/watch?v=aroMC3i9evg> for our video on making twisted fringe. Alternatively, a specific tool for making twisted fringe can be used. Trim ends after knotting. Weave in ends.

cn	cable needle
cont	continue
est'd	established
k	knit
m	marker
meas	measures
ndl	needle
patt	pattern
p	purl
pm	place marker
rep	repeat
RS	right side
sl	slip
st(s)	stitch(es)
WS	wrong side

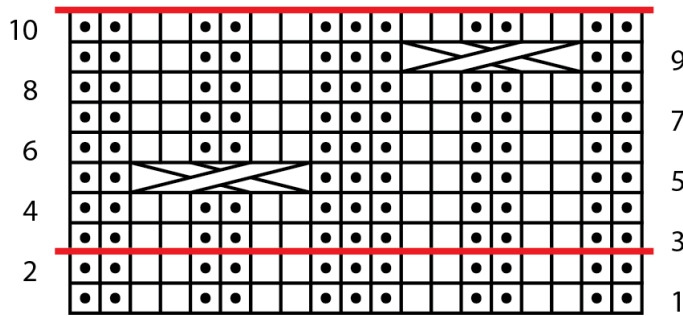
Knit, Relax, Smile, Repeat!

2016 © Universal Yarn, Inc.
All rights reserved.
www.universalyarn.com

This pattern may not be reproduced for business, trade or sale.



Cable Panel



Key

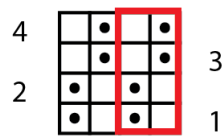
□ knit on RS, purl on WS

● purl on RS, knit on WS

 2x2x2 RC

 pattern repeat

Moss Stitch



Knit, Relax, Smile, Repeat!

2016 © Universal Yarn, Inc.
All rights reserved.
www.universalyarn.com

This pattern may not be reproduced for business, trade or sale.