



PATTERN COLLECTION

Accessories



Diamonds & Dashes

Designed by Rachel Brockman

DIFFICULTY

Easy

SIZES

Small (Large)

Shown in Large size.

FINISHED MEASUREMENTS

Width (at widest edge): 36¼ (57½)"

Length: 51¼ (80½)"

MATERIALS

[Universal Yarn Zesty Sock](#) (75% superwash merino wool, 25% polyamide; 100g/437 yds)

- 103 Peppercorn - 2 (5) skeins

Needles: US Size 4 (3.5 mm) 24-32" circular or longer (to accommodate large number of sts)

Notions: Tapestry needle, stitch markers (optional)

GAUGE

23 sts x 33 rows = 4" in Lace patt

Save time, check your gauge.

Knit, Relax, Smile, Repeat!

2022 © Universal Yarn, Inc.

www.universalyarn.com

All rights reserved. This pattern may not be reproduced for business, trade or sale.

Questions? Contact patterns@universalyarn.com

PATTERN NOTES

Gorgeous lace and delightful texture come together in this rhythmic lace shawl. Diamonds & Dashes gets its name from the marriage of a pretty diamond-lace motif with the fabulous zips of color featured in soft, smooth Zesty Sock. Envelop yourself completely in the larger size or keep it simpler with the smaller size. Either way, you're going to love wrapping this gorgeous shawl around your neck and shoulders anytime the air is brisk!

This shawl is knit flat in one piece from the widest edge and decreases to the tip. Instructions for the Shape Shawl and Shape Tip sections are both written and charted for your convenience.

The Lace pattern is included in the Stitch Guide as a reference for creating a swatch and familiarizing yourself with the stitch pattern. When working the actual shawl, these instructions are written out fully. You may wish to place markers between each pattern repeat to help you stay on track. The Lace pattern is repeated a total of 17 (27) times across the body of the shawl. Please note that decreases commence immediately after the lower border of the shawl is completed.

STITCH GUIDE

Right Twist (RT): K2tog but do not slip st from ndl, knit the first st again, slip both sts from ndl.

Left Twist (LT): Knit the second st on the left ndl through the back loop, knit the first st through the front loop, slip both sts from ndl.

Lace (for gauge swatch)

(multiple of 12 sts, plus 1)

Row 1 (RS): * P1, k2, k2tog, yo, k1, p1, k1, yo, ssk, k2; rep from * to last st, p1.

WS Rows 2-24: K1, * p5, k1; rep from * to end.

Row 3: * P1, k1, k2tog, yo, k2, p1, k2, yo, ssk, k1; rep from * to last st, p1.

Row 5: * P1, k2tog, yo, k1, RT, p1, LT, k1, yo, ssk; rep from * to last st, p1.

Row 7: * P1, k3, LT, p1, RT, k3; rep from * to last st, p1.

Row 9: * P1, k3, RT, p1, LT, k3; rep from * to last st, p1.

Row 11: * P1, yo, ssk, k1, LT, p1, RT, k1, k2tog, yo; rep from * to last st, p1.

Row 13: * P1, k1, yo, ssk, k2, p1, k2, k2tog, yo, k1; rep from * to last st, p1.

Row 15: * P1, k2, yo, ssk, k1, p1, k1, k2tog, yo, k2; rep from * to last st, p1.

Row 17: * P1, LT, k1, yo, ssk, p1, k2tog, yo, k1, RT; rep from * to last st, p1.

Row 19: * P1, RT, k3, p1, k3, LT; rep from * to last st, p1.

Row 21: * P1, LT, k3, p1, k3, RT; rep from * to last st, p1.

Row 23: * P1, RT, k1, k2tog, yo, p1, yo, ssk, k1, LT; rep from * to last st, p1.

Rep Rows 1-14 for patt.

PATTERN BEGINS SHAWL

Lower Border

Cast on 211 (331) sts.

Row 1 (WS): Knit.

Row 2 (RS): Knit.

Rows 3-7: Knit.

Shape Shawl

Note: You may wish to place markers between each pattern repeat to help you stay on track.

Row 1 (RS): K2, ssk, k2, k2tog, yo, k1, p1, k1, yo, ssk, k2, * p1, k2, k2tog, yo, k1, p1, k1, yo, ssk, k2; rep from * to last 4 sts, p1, k3 - 1 st dec'd, 210 (330) sts rem.

Row 2 (WS): K4, * p5, k1; rep from * to last 2 sts, k2.

Row 3: K2, ssk, k4, p1, k2, yo, ssk, k1, * p1, k1, k2tog, yo, k2, p1, k2, yo, ssk, k1; rep from * to last 4 sts, p1, k3 - 1 st dec'd, 209 (329) sts rem.

Row 4: K4, * p5, k1; rep from * to last 7 sts, p4, k3.

Row 5: K2, ssk, k1, RT, p1, LT, k1, yo, ssk, * p1, k2tog, yo, k1, RT, p1, LT, k1, yo, ssk; rep from * to last 4 sts, p1, k3 - 1 st dec'd, 208 (328) sts rem.

Row 6: K4, * p5, k1; rep from * to last 6 sts, p3, k3.

Row 7: K2, ssk, LT, p1, RT, k3, * p1, k3, LT, p1, RT, k3; rep from * to last 4 sts, p1, k3 - 1 st dec'd, 207 (327) sts rem.

Row 8: K4, * p5, k1; rep from * to last 5 sts, p2, k3.

Row 9: K2, ssk, k1, p1, LT, k3, * p1, k3, RT, p1, LT, k3; rep from * to last 4 sts, p1, k3 - 1 st dec'd, 206 (326) sts rem.

Row 10: K4, * p5, k1; rep from * to last 4 sts, p1, k3.

Row 11: K2, ssk, p1, RT, k1, k2tog, yo, * p1, yo, ssk, k1, LT, p1, RT, k1, k2tog, yo; rep from * to last 4 sts, p1, k3 - 1 st dec'd, 205 (325) sts rem.

Row 12: K4, * p5, k1; rep from * to last 3 sts, k3.

Row 13: K2, ssk, k2, k2tog, yo, k1, * p1, k1, yo, ssk, k2, p1, k2, k2tog, yo, k1; rep from * to last 4 sts, p1, k3 - 1 st dec'd, 204 (324) sts rem.

Row 14: K4, * p5, k1; rep from * to last 2 sts, k2.

Row 15: K2, ssk, k2tog, yo, k2, * p1, k2, yo, ssk, k1, p1, k1, k2tog, yo, k2; rep from * to last 4 sts, p1, k3 - 1 st dec'd, 203, (323) sts rem.

Row 16: K4, * p5, k1; rep from * to last 7 sts, p4, k3.

Knit, Relax, Smile, Repeat!

2022 © Universal Yarn, Inc.

www.universalyarn.com

All rights reserved. This pattern may not be reproduced for business, trade or sale.

Questions? Contact patterns@universalyarn.com

Row 17: K2, ssk, k1, RT, * p1, LT, k1, yo, ssk, p1, k2tog, yo, k1, RT; rep from * to last 4 sts, p1, k3 – 1 st dec'd, 202 (323) sts rem.

Row 18: K4, * p5, k1; rep from * to last 6 sts, p3, k3.

Row 19: K2, ssk, LT, * p1, RT, k3, p1, k3, LT; rep from * to last 4 sts, p1, k3 – 1 st dec'd, 201 (321) sts rem.

Row 20: K4, * p5, k1; rep from * to last 5 sts, p2, k3.

Row 21: K2, ssk, k1, * p1, LT, k3, p1, k3, RT; rep from * to last 4 sts, p1, k3 – 1 st dec'd, 200 (320) sts rem.

Row 22: K4, * p5, k1; rep from * to last 4 sts, p1, k3.

Row 23: K2, ssk, * p1, RT, k1, k2tog, yo, p1, yo, ssk, k1, LT; rep from * to last 4 sts, p1, k3 – 1 st dec'd, 199 (319) sts rem.

Row 24: K4, * p5, k1; rep from * to last 3 sts, k3. Rep Rows 1-24, 15 (25) more times – 180 (300) sts dec'd, 19 sts rem (both sizes).

Shape Tip

Note: Stitch counts are the same for both sizes throughout the remainder of the pattern.

Row 1 (RS): K2, ssk, k2, k2tog, yo, k1, p1, k1, yo, ssk, k2, p1, k3 – 1 st dec'd, 18 sts rem.

Row 2 (WS): K4, * p5, k1; rep from * to last 2 sts, k2.

Row 3: K2, ssk, k4, p1, k2, yo, ssk, k1, p1, k3 – 1 st dec'd, 17 sts rem.

Row 4: K4, p5, k1, p4, k3.

Row 5: K2, ssk, k1, RT, p1, LT, k1, yo, ssk, p1, k3 – 1 st dec'd, 16 sts rem.

Row 6: K4, p5, k1, p3, k3.

Row 7: K2, ssk, LT, p1, RT, k3, p1, k3 – 1 st dec'd, 15 sts rem.

Row 8: K4, p5, k1, p2, k3.

Row 9: K2, ssk, k1, p1, LT, k3, p1, k3 – 1 st dec'd, 14 sts rem.

Row 10: K4, p5, k1, p1, k3.

Row 11: K2, ssk, p1, RT, k1, k2tog, yo, p1, k3 – 1 st dec'd, 13 sts rem.

Row 12: K4, p5, k4.

Row 13: K2, ssk, k2, k2tog, yo, k1, p1, k3 – 1 st dec'd, 12 sts rem.

Row 14: K4, p5, k3.

Row 15: K2, ssk, k2tog, yo, k2, p1, k3 – 1 st dec'd, 11 sts rem.

Row 16: K4, p4, k3.

Row 17: K2, ssk, k1, RT, p1, k3 – 1 st dec'd, 10 sts rem.

Row 18: K4, p3, k3.

Row 19: K2, ssk, LT, p1, k3 – 1 st dec'd, 9 sts rem.

Row 20: K4, p2, k3.

Row 21: K2, ssk, k1, p1, k3 – 1 st dec'd, 8 sts rem.

Row 22: K4, p1, k3.

Row 23: K2, ssk, p1, k3 – 1 st dec'd, 7 sts rem.

Row 24: Knit.

Row 25: K2, ssk, k3 – 1 st dec'd, 6 sts rem.

Row 26: Knit.

Row 27: K2, ssk, k2 – 1 st dec'd, 5 sts rem.

Row 28: Knit.

Row 29: K2, ssk, k1 – 1 st dec'd, 4 sts rem.

Row 30: Knit.

Row 31: K2, ssk – 1 st dec'd, 3 sts rem.

Row 32: Knit.

Bind off all sts.

FINISHING

Gently wash and block to finished measurements. Weave in ends.

Abbreviations

dec('d)	decrease(d)
k	knit
k2tog	knit 2 stitches together (1 st dec'd)
ndl	needle
p	purl
patt	pattern
rem	remain(ing)
rep	repeat
RS	right side
ssk	slip next 2 sts individually knitwise, slip them back to left needle in this position, knit them together through the back loops (1 st dec'd)
st(s)	stitch(es)
WS	wrong side
yo	yarn over

Knit, Relax, Smile, Repeat!

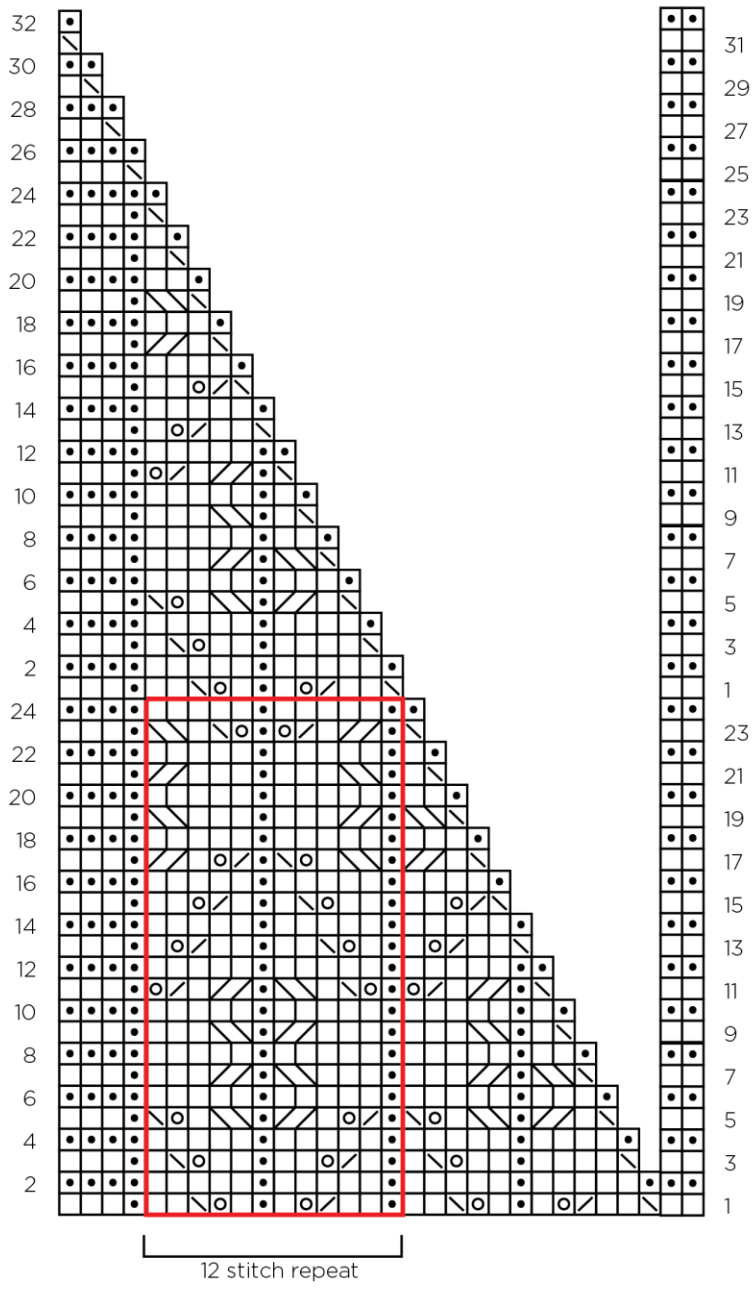
2022 © Universal Yarn, Inc.

www.universalyarn.com

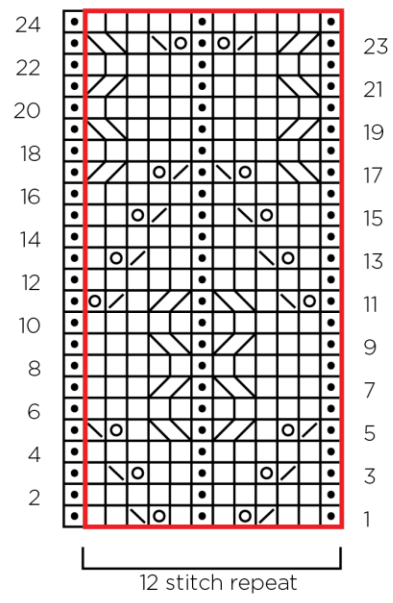
All rights reserved. This pattern may not be reproduced for business, trade or sale.

Questions? Contact patterns@universalyarn.com

Shawl Chart



Lace



Shape Tip Section

Shape Shawl Section
work 16 (26) total times

Key

- pattern repeat
- knit on RS, purl on WS
- purl on RS, knit on WS
- yo
- k2tog
- ssk
- LT
- RT

Knit, Relax, Smile, Repeat!

2022 © Universal Yarn, Inc.
www.universalyarn.com

All rights reserved. This pattern may not be reproduced for business, trade or sale.
Questions? Contact patterns@universalyarn.com