



Pattern Collection: Accessories



Dewdrops Shawl

Designed by Universal Yarn Design Team

SIZES

One

FINISHED MEASUREMENTS

Width along top edge: 53"

Depth in Center: 26½"

MATERIALS

Rozetti Yarns Alpaculence (76% acrylic, 9% alpaca, 9% wool, 9% glitter; 100g/536 yds)

- 108 Jade Blush – 1 skein

Hook: US Size D-3 (3.25 mm) *or size needed to obtain gauge*

Notions: Tapestry needle

GAUGE

19 sts x 8 rows = 4" in double crochet

Save time, check your gauge.

Knit. Relax. Smile. Repeat!

2017 © Universal Yarn, Inc.

All rights reserved.

www.universalyarn.com

This pattern may not be reproduced for business, trade or sale.

PATTERN NOTES

This shawl is worked from the top down. The slow color changes of Alpaculence make this relatively simple piece very entertaining to watch grow!

STITCH GUIDE

Beg V-st: [Ch 4, dc in same st]

V-St: [Dc, ch 1, dc] in st or sp indicated.

SHAWL

Ch 4 (counts as dc + ch 1).

Row 1: Work 6 dc in fourth ch from hk, turn – 7 dc.

Row 2: Beg V-st in first dc, [ch 1, dc in next dc] 2 times, ch 1, V-st in next dc, [ch 1, dc in next dc] 2 times, ch 1, V-st in last dc, turn – 4 dc, 3 V-st.

Row 3: Beg V-st, [ch 1, dc in next dc] 4 times, ch 1, V-st in center V-st, [ch 1, dc in next dc] 4 times, ch 1, V-st in last dc, turn – 8 dc, 3 V-st.

Row 4: Beg V-st, [ch 1, dc in next dc] to ch-1 sp of center V-st, ch 1, V-st in V-st, [ch 1, dc in next dc] to last dc, ch 1, V-st in last dc, turn.

Rows 5-9: Rep Row 4 – 32 dc and 3 V-st at the end of Row 9.

Row 10: Ch 3 (counts as dc), dc in same st, dc in each st and sp to center V-st, ch 1, V-st in V-st, ch 1, dc in each st and sp to last dc, 2 dc in last dc, turn – 76 Dc, 1 V-st.

Row 11: Beg V-st, ch 1, dc in next dc, [ch 1, sk next dc, dc in next dc] to ch-1 sp, ch 1, dc in next dc, ch 1, V-st in V-st, [ch 1, dc in next dc] 2 times [ch 1, sk next dc, dc in next dc] to last dc, ch 1, V-st in last dc, turn – 40 dc, 3 V-st.

Row 12: Rep Row 10 – 92 dc, 1 V-st.

Row 13: Rep Row 11 – 48 dc, 3 V-st.

Rows 14-20: Rep Row 4 – 76 dc and 3 V-st at the end of Row 20.

Rows 21-31: Rep Rows 10-20 – 120 dc, 3 V-st at the end of Row 31.

Rows 32-34: Rep Rows 10-12 – 268 dc, 1 V-st at the end of Row 34.

Rows 35-36: Rep Rows 11-12 – 284 dc, 1 V-st at the end of Row 36.

Border

Row 1: Ch 1, sc in same dc, [sk 2 dc, 6 dc in next dc, sk 2 dc, sc in next dc] to 2 dc before next V-st, sk next 2 dc, [6 dc, ch 2, 6 dc] in V-st, [sk next 2 dc, sc in next V-st, sk next 2 dc, 6 dc in next dc] to last 3 dc, sk next 2 dc, sc in last dc, turn.

Row 2: Ch 4 (counts as tr), 3 tr in same st, ch 1, [7 tr in next sc, ch 1] to center ch-2 sp, [2 dc, 2 tr, 1 dtr, 2 tr, 2 dc] in ch-2 sp, [ch 1, 7 tr in next sc] to last sc, ch 1, 4 tr in last sc, turn.

Row 3: Ch 4, sc in same st, ch 3, [sc between center 2 dc of 6 dc group from Row 1 (going around ch-1 sp from Row 2), ch 3, [sc, ch 4, sc] in center tr of next 7-tr group, ch 3] to center 9-st group, sc between center 2 dc of next 6-dc from Row 2, ch 4, [sc, ch 4, sc] in dtr, ch 4, [sc between center 2 dc of 6 dc group from Row 1 (going around ch-1 sp from Row 2), ch 3, [sc, ch 4, sc] in center tr of next 7-tr group, ch 3] to last ch-1 sp, sc between center 2 dc of 6 dc group from Row 1, ch 3, [sc, ch 4, sc] in last tr. Fasten off.

FINISHING

Weave in ends. Pin out points from Border to blocking mats to open up lace patt. Steam or wet block.

Abbreviations

beg	begin(ning)
bet	between
ch	chain
dc	double crochet
dtr	double triple crochet
sc	single crochet
sk	skip
sp	space(s)
st(s)	stitch(es)
tr	triple crochet
tog	together

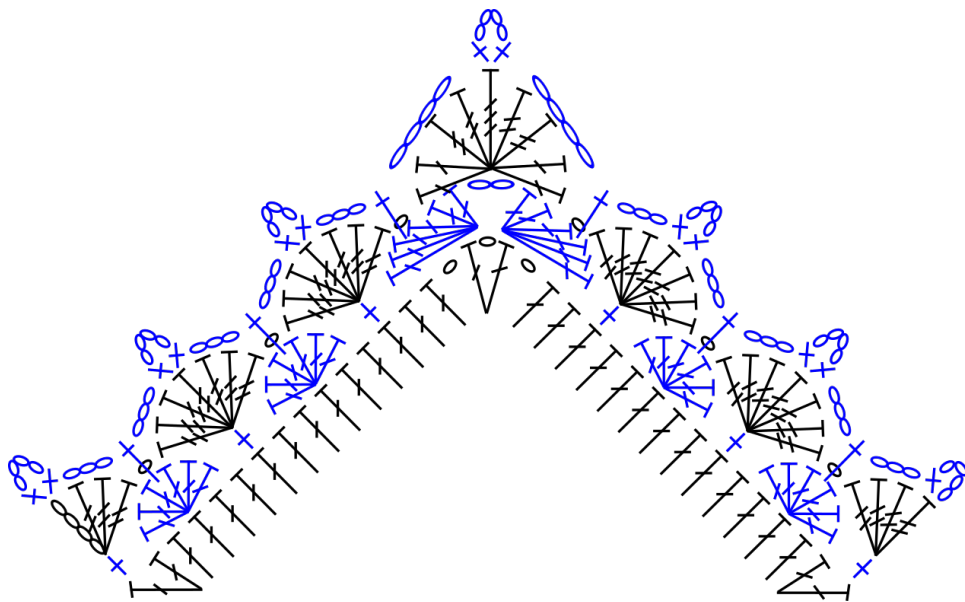
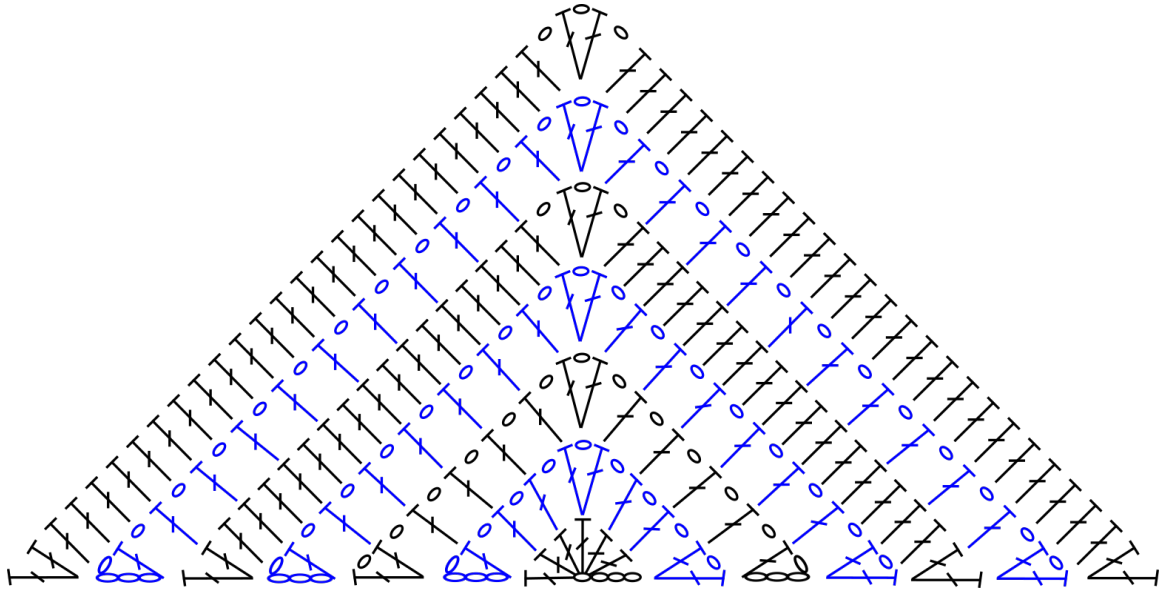
Knit. Relax. Smile. Repeat!

2017 © Universal Yarn, Inc.

All rights reserved.

www.universalyarn.com

This pattern may not be reproduced for business, trade or sale.



Knit. Relax. Smile. Repeat!

2017 © Universal Yarn, Inc.

All rights reserved.

www.universalyarn.com

This pattern may not be reproduced for business, trade or sale.