



PATTERN COLLECTION

Accessories



Delilah

Designed by Aubrey Busek

DIFFICULTY
Intermediate

SIZE
One Size

FINISHED MEASUREMENTS
Width (at widest edge): 30½"
Length: 50¼"

MATERIALS

[Fibra Natura Flax](#) (100% linen; 50g / 137 yds)

- 24 Blue Spruce – 5 skeins

Needles: US Size 5 (3.75 mm) 24" circular (to accommodate large number of sts) or size needed to obtain gauge

Notions: Tapestry needle, stitch markers, 6" piece of cardboard or tassel maker

GAUGE

23 sts x 28 rows = 4" in Arrows Lace

24 sts x 28 rows = 4" in Stockinette

Stitch (St st)

Save time, check your gauge.

Knit, Relax, Smile, Repeat!

2022 © Universal Yarn, Inc.

www.universalyarn.com

All rights reserved. This pattern may not be reproduced for business, trade or sale.

Questions? Contact patterns@universalyarn.com

PATTERN NOTES

Lightweight, lacy, and perfect for summer, Delilah is a linen luxury. Knit using our timeless Flax yarn, this shawl is a perfect topper to any outfit you choose. With an easy-to-memorize lace repeat combined with soothing stockinette stitch, this shawl is just as fun to work up as it is to wear. Tassels adorn each corner of the shawl, adding a bit of flair to the finished project.

This shawl is knit flat from the bottom up, starting at the widest edge and decreasing to the tip. You may wish to place stitch markers between each repeat of the Arrows Lace pattern to help you stay on track.

STITCH GUIDE

Arrows Lace

(multiple of 16 sts, plus 3)

Set-up Row 1 (RS): * K1, k2tog, yo, k5, k2tog, yo, k6; rep from * to last 3 sts, k2tog, yo, k1.

Set-up Row 2 (WS): Purl.

Row 1: * K1, yo, ssk, k4, k2tog, yo, k1, yo, ssk, k4; rep from * to last 3 sts, yo, ssk, k1.

WS Rows 2-8: Purl.

Row 3: * K1, [k2tog, yo, k3] 2 times, yo, ssk, k3; rep from * to last 3 sts, k2tog, yo.

Row 5: * K1, yo, ssk, k2, k2tog, yo, k5, yo, ssk, k2; rep from * to last 3 sts, yo, ssk, k1.

Row 7: * [K1, k2tog, yo] 2 times, k2, k2tog, yo, k3, yo, ssk, k1; rep from * to last 3 sts, k2tog, yo, k1.

Rep Rows 1-8 for patt.

PATTERN BEGINS

SHAWL

Cast on 51 sts, pm, cast on 24 sts, pm, cast on 35 sts, pm, cast on 24 sts, pm, cast on 19 sts, pm, cast on 24 sts – 177 sts.

Establish Pattern and Begin Shaping

Note: Maintain Arrows Lace patt as much as possible during shawl decreases. If you do not have enough sts to complete yarnovers and corresponding decreases in Arrows Lace patt, work these sts in St st instead.

Set-up Row 1 (RS): Ssk, knit to m, sl m, work Set-up Row 1 of Arrows Lace to m, sl m, knit to m, sl m, work Set-up Row 1 of Arrows Lace to m, sl m, knit to m, sl m, work Set-up Row 1 of Arrows Lace to end – 1 st dec'd, 176 sts rem.

Note: Arrows Lace patt will be repeated 1 time across in first instance, 2 times across in second instance, and 3 times across in third instance.



Set-up Row 2 (WS): Purl to end, slipping markers as you come to them.

Row 1: Ssk, knit to m, sl m, work Row 1 of Arrows Lace to m, sl m, knit to m, sl m, work Row 1 of Arrows Lace to m, sl m, knit to m, sl m, work Row 1 of Arrows Lace to end – 1 st dec'd, 175 sts rem.

WS Rows 2-8: Purl to end, slipping markers as you come to them.

Row 3: Ssk, knit to m, sl m, work Row 3 of Arrows Lace to m, sl m, knit to m, sl m, work Row 3 of Arrows Lace to m, sl m, knit to m, sl m, work Row 3 of Arrows Lace to end – 1 st dec'd, 174 sts rem.

Row 5: Ssk, knit to m, sl m, work Row 5 of Arrows Lace to m, sl m, knit to m, sl m, work Row 5 of Arrows Lace to m, sl m, knit to m, sl m, work Row 5 of Arrows Lace to end – 1 st dec'd, 173 sts rem.

Row 7: Ssk, knit to m, sl m, work Row 7 of Arrows Lace to m, sl m, knit to m, sl m, work Row 7 of Arrows Lace to m, sl m, knit to m, sl m, work Row 7 of Arrows Lace to end – 1 st dec'd, 172 sts rem.

Knit, Relax, Smile, Repeat!

2022 © Universal Yarn, Inc.

www.universalyarn.com

All rights reserved. This pattern may not be reproduced for business, trade or sale.

Questions? Contact patterns@universalyarn.com

Maintaining patt as est'd, cont to work an ssk decrease at the beginning of every RS row, 170 more times - 170 sts dec'd, 2 sts rem.

Bind off rem 2 sts.

FINISHING

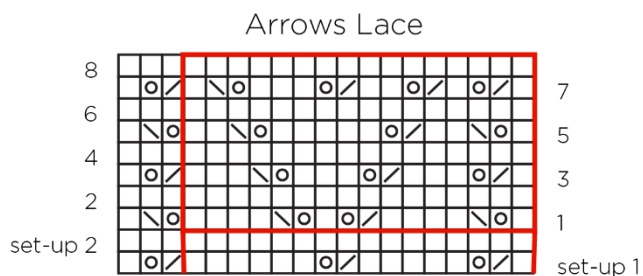
Weave in ends but do not trim. Wet or steam block, stretching to enhance lace. Once piece is fully dry, trim ends close to work.

Tassels (make 3)

Wrap yarn 50 times around a 6" piece of cardboard. Cut one end of the wrapped yarn. Pass a separate 12" piece of yarn through the uncut end of the wrapped yarn, and then wrap it around the wrapped yarn several times. Trim tassels to 5" Tie a tassel to each end of the shawl.

Abbreviations

cont	continue
dec('d)	decrease(d)
est'd	established
k	knit
k2tog	knit 2 stitches together (1 st dec'd)
m	marker
pm	place marker
rem	remain
rep	repeat
RS	right side
sl	slip
ssk	slip next 2 sts individually knitwise, slip them back to left needle in this position, knit them together through the back loops (1 st dec'd)
st(s)	stitch(es)
St st	Stockinette stitch (knit on RS rows, purl on WS rows; in the rnd, knit every rnd)
WS	wrong side
yo	yarn over



Key

- pattern repeat
- knit on RS, purl on WS
- o/ yarn over
- \o ssk
- /o k2tog

Knit, Relax, Smile, Repeat!

2022 © Universal Yarn, Inc.

www.universalyarn.com

All rights reserved. This pattern may not be reproduced for business, trade or sale.

Questions? Contact patterns@universalyarn.com