



# Delft

Designed by Rachel Brockman

## DIFFICULTY

Intermediate

## SIZES

Extra Small (Small, Medium, Large, 1X, 2X, 3X, 4X, 5X)

*Shown in Medium size with approx. 7" of positive ease.*

## FINISHED MEASUREMENTS

**Bust (buttoned):** 32¾ (36¾, 39½, 44, 48½, 52¾, 55, 59½, 64)"

**Length:** 23 (23¾, 23¾, 24¼, 24¾, 25½, 25¾, 27, 27¾)"

## MATERIALS

**Universal Yarn Deluxe Worsted Superwash** (100% superwash wool; 100g/218 yds)

- 760 Indigo – 4 (4, 5, 5, 6, 6, 7, 7, 8) balls

**Needle:** US Size 8 (5 mm) 32"

circular and set of DPNs (or your preferred needle for knitting small circumferences) *or size needed to obtain gauge*

US Size 7 (4.5 mm) 32" circular and set of DPNs (or your preferred needle for knitting small circumferences)

**Notions:** Tapestry needle, stitch markers, stitch holders or waste yarn, six ¾" to 1" buttons

## GAUGE

18 sts x 22 rows = 4" in Body patt with larger ndl

**Save time, check your gauge.**

## PATTERN NOTES

Slip stitch patterns create interesting texture and add dimension to knitting, much like defined brush strokes do in painting. Delft, knit using Deluxe Worsted Superwash features all



over slip stitch patterns on the body and sleeves, as well as lovely diamond twisted stitch pattern on the front. The raglan shaping used provides a great fit and polished appearance, so you'll be just as happy wearing this timeless cardigan as you will be knitting it.

This sweater is knit seamlessly from the bottom up. First the sleeves are knit in the round to the underarms and set aside, then the body is knit flat from the bottom up to the underarms. The body

and sleeves are joined together at the underarm for raglan shaping. Stitches are picked up along the front and neckline to create the button band.

## STITCH GUIDE

**Right Twist (RT):** K2tog but do not slip st from ndl, knit the first st again, slip both sts from ndl.

**Left Twist (LT):** Knit the second st on the left ndl through the back loop, knit the first st through the front loop, slip both sts from ndl.

## Delft

Continued

**K1, P1 Twisted Rib***(odd number of sts, worked flat)***Row 1 (RS):** \* K1 tbl, p1 tbl; rep from \* to last st, k1 tbl.**Row 2 (WS):** \* P1 tbl, k1 tbl; rep from \* to last st, p1 tbl.

Rep Rows 1-2 for patt.

**K1, P1 Twisted Rib***(even number of sts, worked in the rnd)***Rnd 1:** \* K1 tbl, p1; rep from \* to end.

Rep Rnd 1 for patt.

**Right Panel***(panel of 12 sts)***Row 1 (RS):** K4, RT, LT, k2, p2.**Row 2 (WS):** K2, p2, sl 1 pwise wyif, k2, sl 1 pwise wyif, p2, k2.**Row 3:** K3, RT, k2, LT, k1, p2.**Row 4:** K2, p1, sl 1 pwise wyif, p4, sl 1 pwise wyif, p1, k2.**Row 5:** K2, RT, k4, LT, p2.**Row 6:** K2, sl 1 pwise wyif, p6, sl 1 pwise wyif, k2.**Row 7:** K2, LT, k4, RT, p2.**Row 8:** Rep Row 4.**Row 9:** K3, LT, k2, RT, k1, p2.**Row 10:** Rep Row 2.**Row 11:** K4, LT, RT, k2, p2.**Row 12:** K2, p3, [sl 1 pwise wyif] 2 times, p3, k2.

Rep Rows 1-12 for patt.

**Left Panel***(panel of 12 sts)***Row 1 (RS):** P2, k2, RT, LT, k4.**Row 2 (WS):** K2, [p2, sl 1 pwise wyif] 2 times, p2, k2.**Row 3:** P2, k1, RT, k2, LT, k3.**Row 4:** K2, p1, sl 1 pwise wyif, p4, p1, k2.**Row 5:** P2, RT, k4, LT, k2.**Row 6:** K2, sl 1 pwise wyif, p6, sl 1 pwise wyif, k2.**Row 7:** P2, LT, k4, RT, k2.**Row 8:** Rep Row 4.**Row 9:** P2, k1, LT, k2, RT, k3.**Row 10:** Rep Row 2.**Row 11:** P2, k2, LT, RT, k4.**Row 12:** K2, p3, [sl 1 pwise wyif] 2 times, p3, k2.

Rep Rows 1-12 for patt.

**Body Pattern***(multiple of 5 sts, plus 2)***Row 1 (RS):** Knit.**Row 2 (WS):** \* [Sl 1 pwise wyib] 2 times, p3; rep from \* to last 2 sts, [sl 1 pwise wyib] 2 times.**Row 3:** K1, sl 1 pwise wyif, \* sl 1 pwise wyif, k3, sl 1 pwise wyif; rep from \* to end.**Row 4:** \* P3, [sl 1 pwise wyib] 2 times; rep from \* to last 2 sts, p2.**Row 5:** K2, \* k1, [sl 1 pwise wyif] 2 times, k2; rep from \* to end.**Row 6:** Rep Row 4.**Row 7:** Rep Row 3.**Row 8:** Rep Row 2.**Row 9:** Knit.**Row 10:** Purl.**Rows 11-12:** Rep Rows 9-10.**Row 13:** P2, \* [sl 1 pwise wyif] 3 times, p2; rep from \* to end.**Row 14:** Purl.**Rows 15-16:** Rep Rows 13-14.**Row 17:** Knit.**Row 18:** Purl.**Rows 19-22:** Rep Rows 13-16.**Row 23:** Knit.**Row 24:** Purl.**Row 25:** Knit.**Row 26:** Rep Row 2.**Row 27:** Sl 1 pwise wyif, k1, \* k2, [sl 1 pwise wyif] 2 times, k1; rep from \* to end.**Row 28:** \* P2, [sl 1 pwise wyib] 2 times, p1; rep from \* to last 2 sts, p2.**Row 29:** K2, \* [sl 1 pwise wyif] 2 times, k3; rep from \* to end.**Row 30:** Rep Row 28.**Row 31:** Rep Row 27.**Row 32:** Rep Row 2.**Row 33:** Knit.**Row 34:** Purl.**Rows 36-36:** Rep Rows 33-34.**Rows 37-48:** Rep Rows 13-24.

Rep Rows 1-48 for patt.

**Sleeve Pattern***(multiple of 5 sts)***Rnds 1-3:** Knit.**Rnd 4:** \* [Sl 1 pwise wyif] 3 times, p2; rep from \* to end.**Rnd 5:** Knit.**Rnd 6:** Rep Rnd 4.**Rnds 7-9:** Knit.**Rnds 10-12:** Rep Rnds 4-6.**Rnds 13-16:** Knit.**Rnd 17:** \* K3, [sl 1 pwise wyif] 2 times; rep from \* to end.**Rnd 18:** \* Sl 1 pwise wyif, k3, sl 1 pwise wyif; rep from \* to end.**Rnd 19:** \* [Sl 1 pwise wyif] 2 times, k3; rep from \* to end.**Rnd 20:** \* K1, [sl 1 pwise wyif] 2 times, k2; rep from \* to end.**Rnd 21:** Rep Rnd 19.**Rnd 22:** Rep Rnd 18.**Rnd 23:** Rep Rnd 17.**Rnds 24-27:** Knit.**Rnds 28-40:** Rep Rnds 4-16.**Rnd 41:** Rep Rnd 17.**Rnd 42:** \* K2, [sl 1 pwise wyif] 2 times, k1; rep from \* to end.**Rnd 43:** Rep Rnd 20.**Rnd 44:** Rep Rnd 21.**Rnd 45:** Rep Rnd 43.**Rnd 46:** Rep Rnd 42.**Rnd 47:** Rep Rnd 17.**Rnd 48:** Knit.

Rep Rnds 1-48 for patt.

**SLEEVES***Make 2*

With smaller dpns, cast on 34 (34, 34, 34, 40, 40, 40, 40, 44) sts. PM and join to knit in the rnd.

## Delft

Continued

Work in K1, P1 Twisted Rib until piece meas 1¾" from cast-on edge. Change to larger dpns.

**Sizes Extra Small (Small, Medium, Large, 5X) Only:**

**Inc Rnd:** K1, m1, knit to end – 1 st inc'd, 35 (35, 35, 35, -, -, -, 45) sts.

**Sizes 1X (2X, 3X, 4X) Only:**

**Next Rnd:** Knit.

**All Sizes:**

35 (35, 35, 35, 40, 40, 40, 40, 45) sts.

**Establish Pattern**

**Rnd 1:** Work Rnd 18 of Sleeve patt to end – patt will be repeated 7 (7, 7, 7, 8, 8, 8, 8, 9) times across each rnd.

**Rnd 2:** Work next rnd of Sleeve patt to end.

Cont as est'd through Rnd 48 of patt, then rep Rnds 1-47 of patt, 1 more time. *At the same time, shape Sleeve as follows:*

**Shape Sleeve**

*Note: Maintain increased stitches in Sleeve patt throughout sleeve shaping.*

**Inc Rnd (RS):** K1, m1R, cont as est'd to last st, m1L, k1 – 2 sts inc'd, 37 (37, 37, 37, 42, 42, 42, 42, 47) sts. Continuing in patt as est'd, rep Inc Rnd every 10 (6, 6, 4, 4, 4, 2, 2, 2) rnds, 2 (0, 8, 2, 5, 14, 4, 10, 10) more times, then rep Inc Rnd every 12 (8, 8, 6, 6, 6, 4, 4, 4) rnds, 4 (9, 3, 11, 9, 3, 17, 14, 14) times – 12 (18, 22, 26, 28, 34, 42, 48, 48) sts inc'd, 49 (55, 59, 63, 70, 76, 84, 90, 95) sts.

Work even in pass as est'd until Sleeve meas 16¾" from cast-on edge, ending with an Rnd 47 of

patt.

**Next Rnd:** Cont in patt as est'd to last 3 (3, 3, 6, 6, 6, 9, 9, 9) sts. Place next 6 (6, 6, 12, 12, 12, 18, 18, 18) sts on holder or waste yarn, removing bor m as you come to it. Place rem 43 (49, 53, 51, 58, 64, 66, 72, 77) sts on separate holder or waste yarn. Set aside.

**BODY**

With smaller ndl, cast on 141 (155, 171, 191, 211, 231, 241, 261, 281) sts.

Work in K1, P1 Twisted Rib until piece meas 1½" from cast-on edge, ending with a RS row. Change to larger ndl.

**Size Small Only:**

**Inc Row (WS):** P1, m1p, purl to end – 1 st inc'd, 156 sts.

**Sizes Extra Small (Medium, Large, 1X, 2X, 3X, 4X, 5X) Only:**

**Next Row (WS):** Purl.

**All Sizes:**

141 (156, 171, 191, 211, 231, 241, 261, 281) sts.

**Establish Pattern**

**Row 1 (RS):** Work Row 1 of Right Panel over 12 sts, pm, work Row 1 of Body patt to last 12 sts, pm, work Row 1 of Left Panel to end.

**Row 2 (WS):** Work Row 2 of Left Panel to m, sl m, work Row 2 of Body patt to m, sl m, work Row 2 of Right Panel to end.

Cont in patt as est'd through Row 48 of patt, then rep Rows 1-34 of patt, one more time – piece meas approx. 16½" from cast-on edge.

**Join Body and Sleeves**

**Joining Row (RS):** Cont as est'd

over 31 (34, 38, 40, 45, 50, 50, 55, 60) Right Front sts, pm, slip next 6 (6, 6, 12, 12, 12, 18, 18, 18) sts to holder or waste yarn, cont as est'd over 43 (49, 53, 51, 58, 64, 66, 72, 77) held Sleeve sts, pm, cont as est'd over 67 (76, 83, 87, 97, 107, 105, 115, 125) Back sts, pm, slip next 6 (6, 6, 12, 12, 12, 18, 18, 18) sts to holder or waste yarn, cont as est'd over 43 (49, 53, 51, 58, 64, 66, 72, 77) held Sleeve sts, pm, cont as est'd over 31 (34, 38, 40, 45, 50, 50, 55, 60) Left Front sts. 215 (242, 265, 269, 303, 335, 337, 369, 399) sts on ndl.

**Next Row (WS):** Cont as est'd to end.

**Raglan Shaping**

*Note: Read this section carefully before proceeding. Sleeve and Body shaping occur at the same time and at different rates. Begin shaping with a RS Body & Sleeve Decrease Row.*

Working rows as outlined below, work a Body Decrease every 2 rows, 16 (14, 13, 16, 13, 12, 16, 17, 16) times, then work a Body Decrease every row, 2 (8, 12, 10, 18, 24, 18, 22, 28) times. *At the same time*, work a Sleeve Decrease every 4 (2, 2, 4, 4, 2, 2, 2, 2) rows, 6 (18, 18, 3, 1, 24, 25, 28, 30) time(s), then work a Sleeve Decrease every 1 (0, 1, 2, 2, 0, 0, 0, 0) row(s), 10 (0, 2, 15, 20, 0, 0, 0, 0) time(s).

**Body & Sleeve Dec Row (RS):** Cont as est'd to 2 sts bef m, k2tog (1 Right Front dec), sl m, ssk, cont as est'd to 2 sts bef m, k2tog (2 Sleeve decs), sl m, ssk, cont as est'd to 2 sts bef m, k2tog (2 Back decs), sl m, ssk, cont as est'd to 2 sts bef m, k2tog (2 Sleeve decs), sl m, ssk, cont as est'd to end (1 Left Front

## Delft

Continued

dec) – 8 sts dec'd.

**Body & Sleeve Dec Row (WS):** Cont as est'd to 2 sts bef m, ssp (1 Left Front dec), sl m, p2tog, cont as est'd to 2 sts bef m, ssp (2 Sleeve decs), sl m, p2tog, cont as est'd to 2 sts bef m, ssp (2 Back decs), sl m, p2tog, cont as est'd to 2 sts bef m, ssp (2 Sleeve decs), sl m, p2tog, cont as est'd to end (1 Right Front dec) – 8 sts dec'd.

**Body Only Dec Row (RS):** Cont as est'd to 2 sts bef m, k2tog (1 Right Front dec), sl m, cont over Sleeve sts to m, sl m, ssk, cont as est'd to 2 sts bef m, k2tog (2 Back decs), sl m, cont over Sleeve sts to m, sl m, ssk, cont as est'd to end (1 Left Front dec) – 4 sts dec'd.

**Body Only Dec Row (WS):** Cont as est'd to 2 sts bef m, ssp (1 Left Front dec), sl m, cont over Sleeve sts to m, sl m, p2tog, cont as est'd to 2 sts bef m, ssp (2 Back decs), sl m, cont over Sleeve sts to m, sl m, p2tog, cont as est'd to end (1 Right Front dec) – 4 sts dec'd.

**Even Row (RS):** [Cont as est'd to 1 st bef m, k1, sl m, k1] 3 times, cont as est'd to end.

**Even Row (WS):** [Cont as est'd to 1 st bef m, p1, sl m, p1] 3 times, cont as est'd to end.

After all shaping is complete you will have decreased 36 (44, 50, 52, 62, 72, 68, 78, 88) Back sts, 18 (22, 25, 26, 31, 36, 34, 39, 44) sts each for the Left and Right Front, and 32 (36, 40, 36, 42, 48, 50, 56, 60) sts for each Sleeve – 79 (82, 85, 93, 95, 95, 101, 101, 103) sts rem on ndl.

13 (12, 13, 14, 14, 14, 16, 16, 16) sts rem for each Right and Left Front; 11 (13, 13, 15, 16, 16, 16, 16, 17) sts rem for each Sleeve,

and 31 (32, 33, 35, 35, 35, 37, 37, 37) sts rem for Back. Place all sts on holder or waste yarn.

## FINISHING

## Left Button Band

With smaller ndl, RS facing, and beg at upper Left Front, pick up and knit 103 (105, 107, 109, 111, 113, 115, 119, 123) sts evenly along Left Front edge. Work in K1, P1 Twisted Rib until Left Buttonband meas 1½" from cast-on edge, ending with a WS row. Bind off all sts in patt.

## Right Buttonhole Band

With smaller ndl, RS facing, and beg of bottom of Right Front, pick up and knit 103 (105, 107, 109, 111, 113, 115, 119, 123) sts evenly along Right Front edge. Work in K1, P1 Twisted Rib for 5 rows (ending with a WS row).

## Buttonholes

*Note: On Row 2, the double yarn-overs are worked with the preceding stitch and first stitch following the double yarn-overs. If the first stitch is a knit stitch: ssk. If the first stitch is a purl stitch: p2tog. If the second stitch following the double yarnover is a knit stitch: k2tog. If the second stitch following the yarnover is a purl stitch, p2tog.*

**Row 1 (RS):** Cont as est'd over 3 (3, 4, 6, 3, 5, 7, 3, 3) sts, [yo] 2 times, {work in patt for 17 (17, 17, 17, 18, 18, 18, 20, 21) sts, [yo] 2 times} 5 times, work in patt to end of row – 6 buttonholes.

**Row 2 (WS):** Cont as est'd to 1 st bef the first double yo, [work next st and the first yo tog, then work the second yo and foll st tog, cont as est'd for 15, (15, 15, 15, 16, 16, 16, 18, 19) sts] 5 times, work

next st and first yo tog, then work second yo and foll st tog, cont as est'd to end.

Cont in K1, P1 Twisted Rib until piece meas 1½" from picked-up edge, ending with a WS row. Bind off all sts in patt.

## Neckband

With smaller ndl and RS facing, beg at upper Right Front edge. Pick up and knit 6 sts along top of buttonband, k79 (82, 85, 93, 95, 95, 101, 101, 103) held Body sts, pick up and knit 6 sts along top of buttonband – 91 (94, 97, 105, 107, 107, 113, 113, 115) sts.

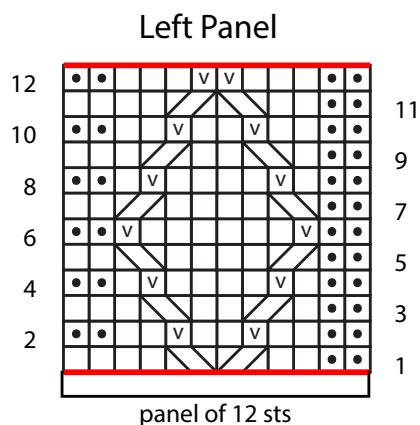
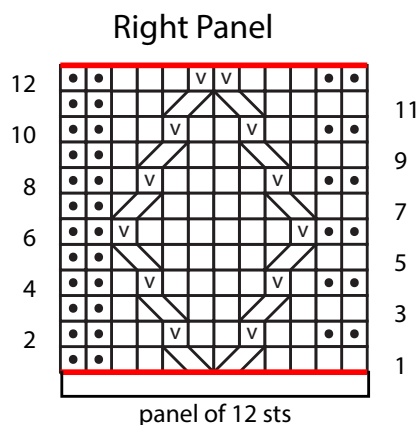
Work in K1, P1 Twisted Rib until piece meas 1" from picked-up edge, ending with a WS row. Bind off all sts in patt.

Gently wash and to finished measurements. Weave in ends. Attach buttons to Left Button Band, opposite of buttonholes.



## Delft

Continued



### Key



pattern repeat



knit on RS, purl on WS



purl on RS, knit on WS



sl 1 wyif on RS, sl 1 wyib on WS



sl 1 wyib on RS, sl 1 wyif on WS

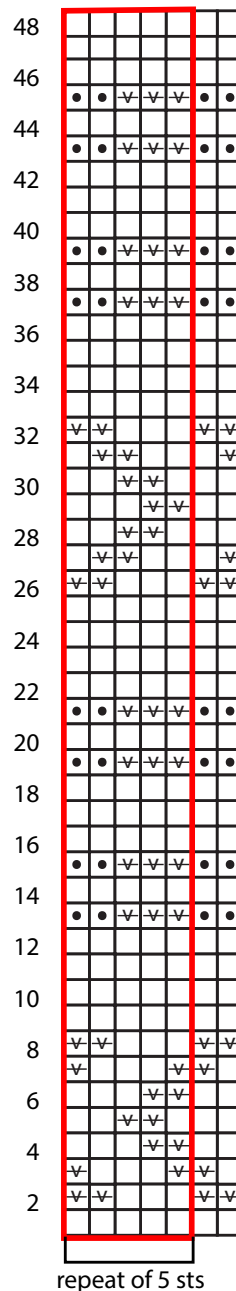


RT

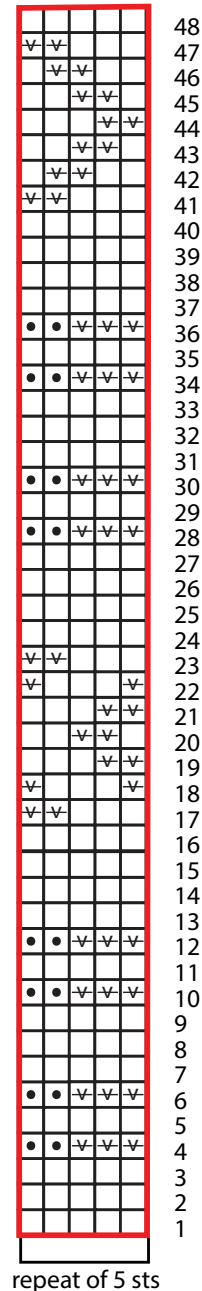


LT

### Body

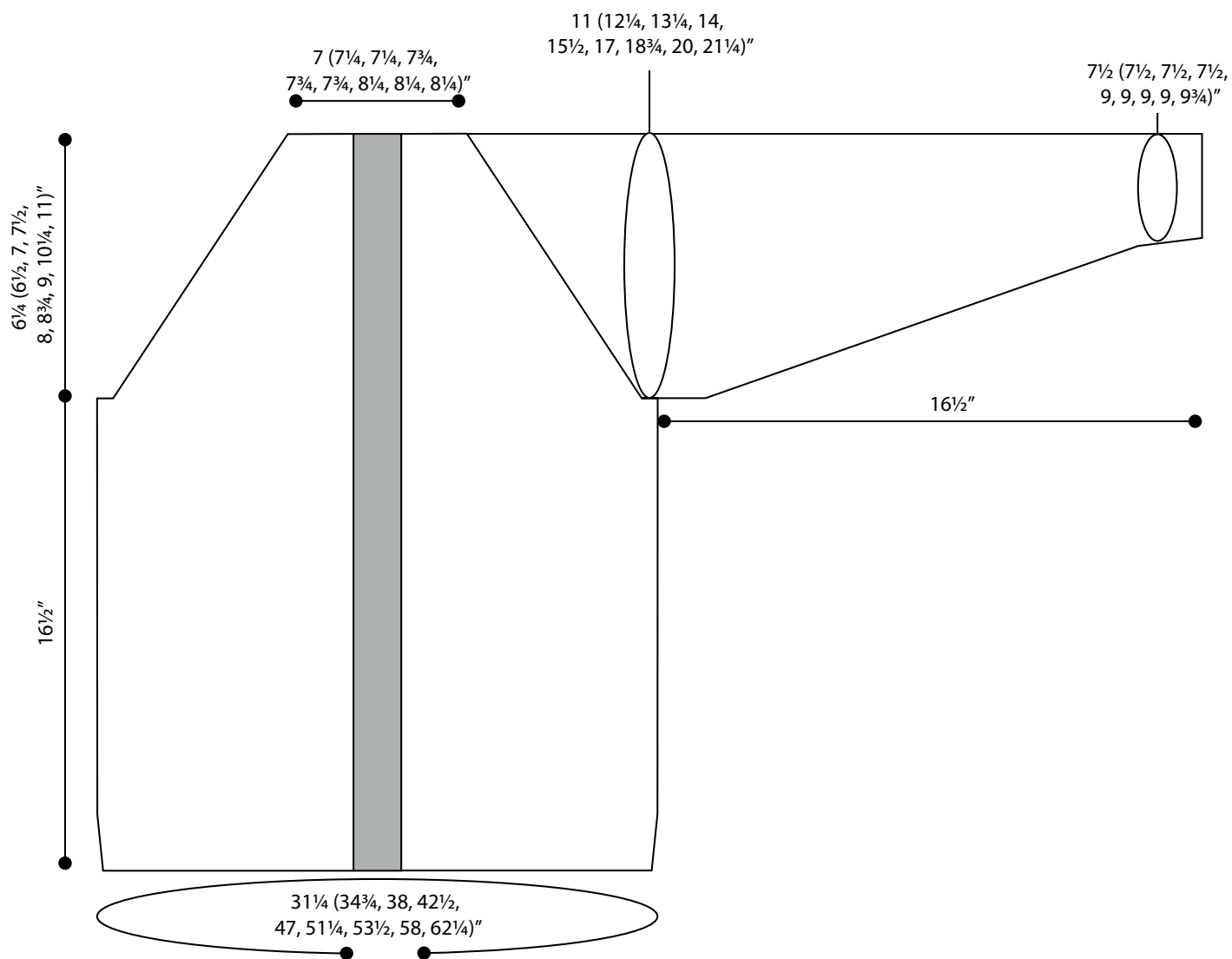


### Sleeve



## Delft

Continued



# Deluxe Worsted Superwash



201 m / 220 yds

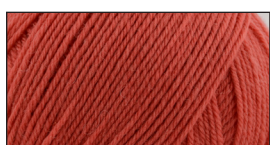
3.5 oz / 100 g

100% Superwash Wool  
Machine Wash & Dry

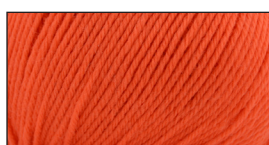
Knit: 18 sts x 24 rows = 4" in St st / US Size 7 (4.5 mm)

Crochet: 12 sc x 14 rows = 4" / US Size H-8 (5 mm)

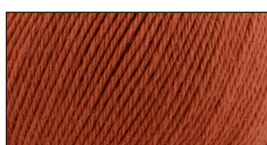
Deluxe Worsted Superwash  
is a beautiful, springy, 100%  
superwash wool with an  
expansive palette of colors.  
Makes colorwork and cables  
look divine!



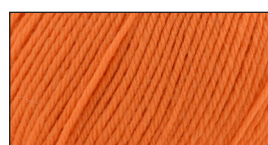
701  
Rosy Mauve



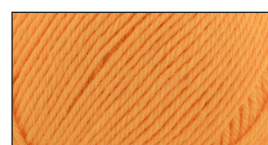
702  
Autumn  
Orange



703  
Terra Cotta



704  
Nectarine



705  
Orangesicle



706  
Marigold



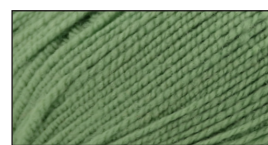
707  
Ginseng



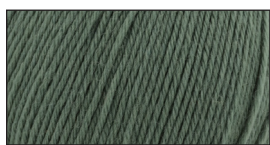
708  
Butter



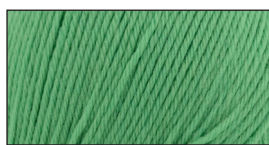
709  
LimeTree



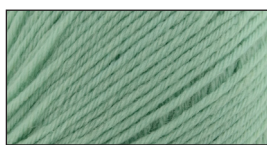
710  
Greenery



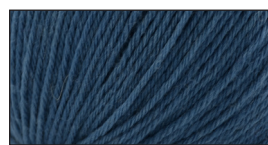
711  
Jadestone



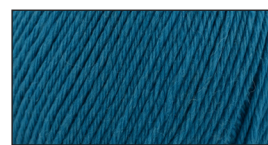
712  
Shamrock  
Smoothie



713  
Honey Dew



714  
Petrol Blue



715  
Teal Viper



716  
Nitrox Blue



717  
Summer Sky



718  
Dusty Blue



719  
Purplish Blue



720  
Grape Taffy



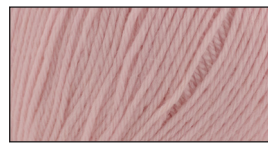
721  
Honeysuckle



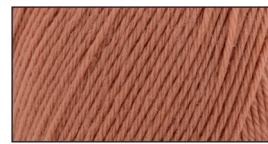
722  
Classic Pink



723  
Petit Pink

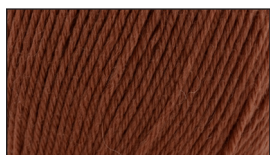


724  
Starfish

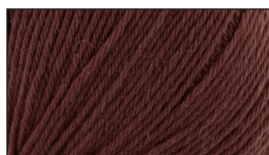


725  
Adobe

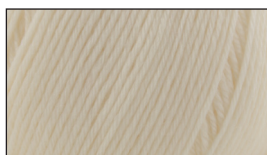
# Deluxe Worsted Superwash



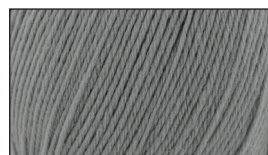
726  
Auburn



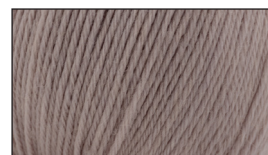
727  
Chocolate



728  
Pulp



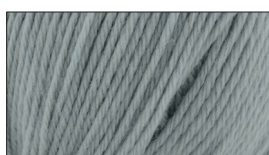
729  
Neutral Grey



730  
Steel Cut Oats



731  
Burrow



732  
Icy Grey



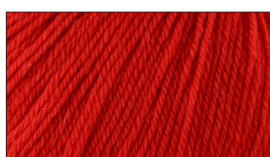
733  
Sweatshirt Grey



734  
Cream



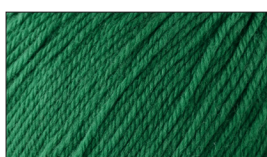
735  
Ebony



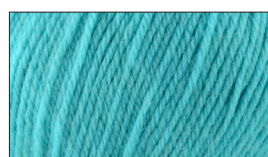
736  
Christmas Red



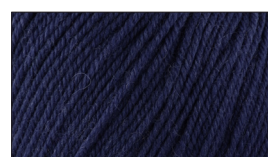
737  
Sangria



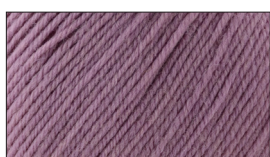
738  
Christmas Green



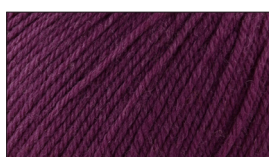
739  
Turquoise



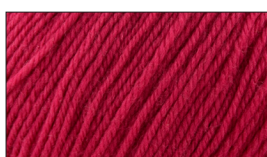
740  
Twilight



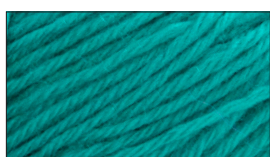
741  
Heather



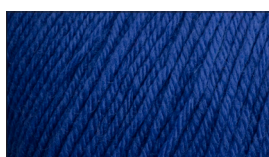
742  
Plum Dandy



743  
Bashful Pink



744  
Blue Lagoon



745  
Cobalt



747  
Lilac Wash

Paid Pattern



Cardamom and Clove Cover

## Abbreviations

|                  |   |              |   |
|------------------|---|--------------|---|
| <b>approx</b>    | approximately   |              |   |
| <b>bef</b>       | before  |              |   |
| <b>beg</b>       | begin(ning)   |              |   |
| <b>bor</b>       | beginning of round  | <b>MC</b>    | main color  |
| <b>CC</b>        | contrast color  | <b>meas</b>  | measures  |
| <b>ch</b>        | chain   | <b>ndl</b>   | needle  |
| <b>circ</b>      | circular  | <b>p</b>     | purl  |
| <b>cn</b>        | cable needle  | <b>p2tog</b> | purl 2 sts together (1 st dec'd)  |
| <b>cont</b>      | continue  | <b>patt</b>  | pattern   |
| <b>dec('d)</b>   | decrease(d)   | <b>pm</b>    | place marker  |
| <b>dpn(s)</b>    | double pointed needle(s)  | <b>pwise</b> | purlwise  |
| <b>est'd</b>     | established   | <b>RC</b>    | right cross   |
| <b>garter st</b> | knit every row  | <b>rem</b>   | remain(ing)   |
| <b>hk</b>        | hook  | <b>rep</b>   | repeat  |
| <b>inc('d)</b>   | increase(d)   | <b>rnd</b>   | round   |
| <b>k</b>         | knit  | <b>RS</b>    | right side  |
| <b>k2tog</b>     | knit 2 stitches together (1 st dec'd)   | <b>sl</b>    | slip  |
|                  |   | <b>ssk</b>   | slip next 2 sts   |
| <b>kwise</b>     | knitwise  |              | individually knitwise,  |
| <b>LC</b>        | left cross  |              | slip them back to left  |
| <b>m</b>         | marker  |              | needle in this position,  |
| <b>m1</b>        | insert left needle from front to back under horizontal strand of yarn lying between st just worked and next st, knit or purl this st through the back loop (1 st inc'd) | <b>ssp</b>   | knit them together through the back loops (1 st dec'd)  |
| <b>m1L</b>       | insert left needle from front to back under horizontal strand of yarn lying between st just worked and next st, knit or purl this st through the back loop (1 st inc'd) | <b>St st</b> | slip next 2 sts individually knitwise, slip them back to left needle in this position, purl them together through the back loops (1 st dec'd) |
| <b>m1P</b>       | insert left needle from back to front under horizontal strand of yarn lying between st just worked and next st, purl this st through the front loop (1 st inc'd)        | <b>st(s)</b> | Stockinette stitch (knit on RS rows, purl on WS rows; in the rnd, knit every rnd)   |
|                  |   | <b>tbl</b>   | stitch(es) through the back loop(s)   |
| <b>m1R</b>       | insert left needle from back to front under horizontal strand of yarn lying between st just worked and next st, knit  | <b>tog</b>   | together  |
|                  |   | <b>WS</b>    | wrong side  |
|                  |   | <b>wyib</b>  | with yarn held in back  |
|                  |   | <b>wyif</b>  | with yarn held in front   |
|                  |   | <b>yo</b>    | yarn over   |

## Distribution

### US

Universal Yarn  
5991 Caldwell Park Drive  
Harrisburg, NC 28075  
Tel: 877.864.9276  
Fax: 704.454.1029  
e-mail: patterns@universalyarn.com  
www.universalyarn.com

### CANADA

H.A. Kidd & Company  
5 Northline Rd  
Toronto, ON M4B 3P2  
Tel: 800.387.1753  
Fax: 416.364.4860  
email: info1@hakidd.com  
www.hakidd.com.com

### TURKEY

Defne  
DEMIRTAS ORGANIZE SANAYI  
BÖLGESİ  
ZAMBAK SOKAK NO:3  
OSMANGAZI/Bursa  
Tel: 90.224.261.3347-48  
Fax: 90.224.261.3332  
e-mail: info@defneplikpazarlama.com

## Acknowledgements

**Creative Lead**

Rachel Brockman

**Technical Editors**

Rachel Brockman

Aubrey Busek

**Model**

Anna Wolf

**Designers**

Amy Gunderson

Rachel Brockman

**Proofreaders**

Heather Hill

Aubrey Busek

**Photographer**

Jullianna O'Malley

Salt Paper Studio

**Stylist**

Chelsea Kimrey

