



Pattern Collection: Women



Darcy Vest

Designed by Universal Yarn Design Team

SIZES

Extra Small (Small, Medium, Large, 1X, 2X, 3X)

FINISHED MEASUREMENTS

Bust, buttoned: 37 (39¾, 43, 45¾, 49, 51¾, 55)''

Length: 23¼ (23½, 24, 24¼, 24¾, 25, 25 ½)

MATERIALS

Universal Yarn Bella Cash (60% fine merino, 30% nylon, 10% cashmere; 50g/230 yds)

- 104 Sea – 4 (5, 5, 6, 6, 7, 7) skeins

Needles: US Size 3 (3.25 mm) 24'' circular *or size needed to obtain gauge*
US 2 (2.75 mm) 24'' circular

Notions: Tapestry needle, 2 removable stitch markers, 9 - 5/8'' buttons

GAUGE

24 sts x 32 rows = 4'' in lace patt using larger ndl

Save time, check your gauge.

Knit. Relax. Smile. Repeat!

2017 © Universal Yarn, Inc.

All rights reserved.

www.universalyarn.com

This pattern may not be reproduced for business, trade or sale.

PATTERN NOTES

The Darcy Vest is the perfect multi-season garment to add to your wardrobe. Soft and lightweight, it is perfect for layering.

When working decreases in Lace pattern, maintain decreased stitches in pattern. If there are not enough stitches to work decreases and corresponding increases in the pattern stitch, work these extra stitches in Stockinette stitch instead.

Sloped Bind off: On the row before the bind-off row, slip the last stitch of the row pwise wyib. On the bind-off row, sl 2, pass the second slipped st over the first slipped st, bind off rem sts as usual.

STITCH GUIDE

K1, P1 Ribbing

(even number of sts)

Row 1: * K1, p1; rep from * to end.
Rep Row 1 for patt.

K1, P1 Ribbing

(odd number of sts)

Row 1: * K1, p1; rep from * to last st, k1.
Row 2 (WS): * P1, k1; rep from * to last st, p1.
Rep Rows 1 & 2 for patt.

Lovely Lace

(multiple of 9 sts)

Row 1 (RS): * K1, k2tog, [k1, yo] twice, k1, ssk, k1; rep from * to end
WS Rows 2-8: Purl.
Row 3: * K2tog, k1, yo, k1, k1, k1, yo, k1, ssk; rep from * to end.
Row 5: * Ssk, k1, yo, k1, k1, k1, yo, k1, k2tog; rep from * to end.
Row 7: * K1, ssk, [k1, yo] twice, k1, k2tog, k1; rep from * to end
Rep Rows 1-8 for patt.

LEFT FRONT

Hem

With smaller ndls cast on 54 (58, 63, 67, 72, 76, 81) sts. Work in K1, P1 Ribbing until piece measures 1½", ending with a WS Row.

Begin Lace

Switch to larger ndl.

Row 1 (RS): K0 (2, 0, 2, 0, 2, 0), work Row 1 of Lovely Lace patt 6 (6, 7, 7, 8, 8, 9) times, k0 (2, 0, 2, 0, 2, 0).

Row 2 (WS): P0 (2, 0, 2, 0, 2, 0), work Row 2 of Lovely Lace patt to last 0 (2, 0, 2, 0, 2, 0) sts, purl to end. Cont as est'd until piece meas 15½ (15½, 15¾, 15¾, 16, 16, 16¼)". Place removable markers at each edge to indicate beg of armholes. Cont in patt until piece meas 2½ (2½, 2¾, 3, 3, 3¼, 3¼)" from armhole markers, ending with a WS Row.

Left Front Neck Shaping

Note: When working decreases in Lace pattern, maintain decreased stitches in pattern. If there are not enough stitches to work decreases and corresponding increases in the pattern stitch, work these extra stitches in Stockinette stitch instead.

Dec row (RS): Work in patt to last 3 sts, ssk, k1 – 1 st dec'd, 53 (57, 62, 66, 71, 75, 80) sts rem. Rep Dec row every 4 rows 1 (1, 0, 1, 0, 0, 0) time, then every 2 rows 17 (17, 19, 18, 20, 20, 21) times – 36 (40, 44, 48, 52, 56, 60) sts rem.
Con't working in patt until piece meas 7¼ (8, 8¼, 8½, 8¾, 9, 9¼)" from armhole markers, ending on a WS Row. Bind off all rem sts.

RIGHT FRONT

Work as Left Front to Neck Shaping.

Right Front Neck Shaping

Dec row (RS): K1, k2tog, work in patt to end – 1 st dec'd, 53 (57, 62, 66, 71, 75, 80) sts rem. Rep Dec row every 4 rows 1 (1, 0, 1, 0, 0, 0) time, then every 2 rows 17 (17, 19, 18, 20, 20, 21) times – 36 (40, 44, 48, 52, 56, 60) sts rem.
Con't working in patt until piece meas 7¼ (8, 8¼, 8½, 8¾, 9, 9¼)" from armhole markers, ending on a WS Row. Bind off all rem sts.

Knit. Relax. Smile. Repeat!

2017 © Universal Yarn, Inc.

All rights reserved.

www.universalyarn.com

This pattern may not be reproduced for business, trade or sale.

BACK

Hem

With smaller ndls cast on 108 (117, 126, 135, 144, 153, 162) sts. Work in K1, P1 Ribbing until piece measures 1½", ending with a WS Row.

Begin Lace

Switch to larger ndl and work Lovely Lace patt until piece meas 15½ (15½, 15¾, 15¾, 16, 16, 16¾)". Place removable markers at each edge to indicate beg of armholes. Cont in patt until piece meas 6¼ (7, 7¼, 7½, 7¾, 8, 8¼)" from armhole markers, ending with WS row.

Shape Neck

Note: Use the Sloped Bind-off method for binding off the rem sts. Cont working in Lace patt.

Row 1: Work even in patt for 41 (45, 49, 53, 57, 61, 65) Right Shoulder sts, join new ball and bind off next 26 (27, 28, 29, 30, 31, 32) sts, work in patt across rem 41 (45, 49, 53, 57, 61, 65) Left Shoulder sts. Place Right Shoulder sts on holder.

WS Rows 2–6: Work even in patt to end.

Row 3: Bind off 3 sts, work in patt to end – 38 (42, 46, 50, 54, 58, 62) sts rem.

Row 5: Bind off 2 sts, work in patt to end – 36 (40, 44, 48, 52, 56, 60) sts rem.

Work even in patt until piece meas 7¾ (8, 8¼, 8½, 8¾, 9, 9¼)" from armhole markers, ending on a WS Row. Bind off all rem sts.

Shape Right Back Neck

Return held sts to ndl.

Row 2 (WS): Bind off 3 sts, work in patt to end – 38 (42, 46, 50, 54, 58, 62) sts rem.

RS Rows 3-5: Work in patt to end.

Row 4: Bind off 2 sts, work in patt to – 36 (40, 44, 48, 52, 56, 60) sts rem.

Con't working in patt until piece meas 7¾ (8, 8¼, 8½, 8¾, 9, 9¼)" from armhole markers, ending on a WS Row. Bind off all rem sts.

FINISHING

Block pieces to finished measurements. Sew - shoulder seams.

Button band

With RS facing and beginning at the bottom Right Front, with smaller ndl, pick up and knit 140 (142, 144, 146, 146, 150, 154) sts evenly along Right Front, 34 (36, 36, 38, 40, 40, 42) sts along Back

Neck edge, and 140 (142, 144, 146, 146, 150, 154) sts along Left Front edge. Work in K1, P1 Ribbing for 5 rows, ending with a WS row.

Button Holes

Note: On Row 2, the double yarn-overs are worked with the preceding stitch and first stitch following the double yarn-overs. If the stitch is a knit stitch: ssk. If the first stitch is a purl stitch: p2tog.

Row 1 (RS): Work in est'd patt for 6 (6, 8, 10, 8, 4, 6) sts, [yo] 2 times, {work in patt for 13 (13, 13, 13, 13, 14, 14) sts, [yo] 2 times} 8 times, work in patt to end – 9 buttonholes.

Row 2 (WS): Work as est'd until 1 st before the first double yo, [work next st and the first yo together, then work the second yo and next st together, con't in patt for 12 (12, 12, 12, 12, 13, 13) sts] 9 times, work in patt to end.

Cont in K1, P1 Ribbing until piece meas 1" from pick-up edge, ending with a WS row. Bind off all sts in patt.

Armhole Edging

With smaller ndl, pick up and knit 104 (104, 108, 112, 116, 120, 124) sts evenly along Armhole opening beg at markers. Work in K1, P1 Ribbing until piece measure 1½" from pick-up edge, ending with a WS row. Bind off all sts in patt. Sew Sleeve and side seams. Weave in ends. Sew buttons to Left Front opposite buttonholes.



Knit. Relax. Smile. Repeat!

2017 © Universal Yarn, Inc.

All rights reserved.

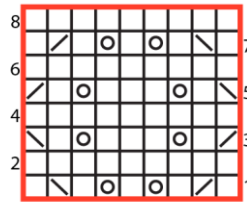
www.universalyarn.com

This pattern may not be reproduced for business, trade or sale.

Abbreviations

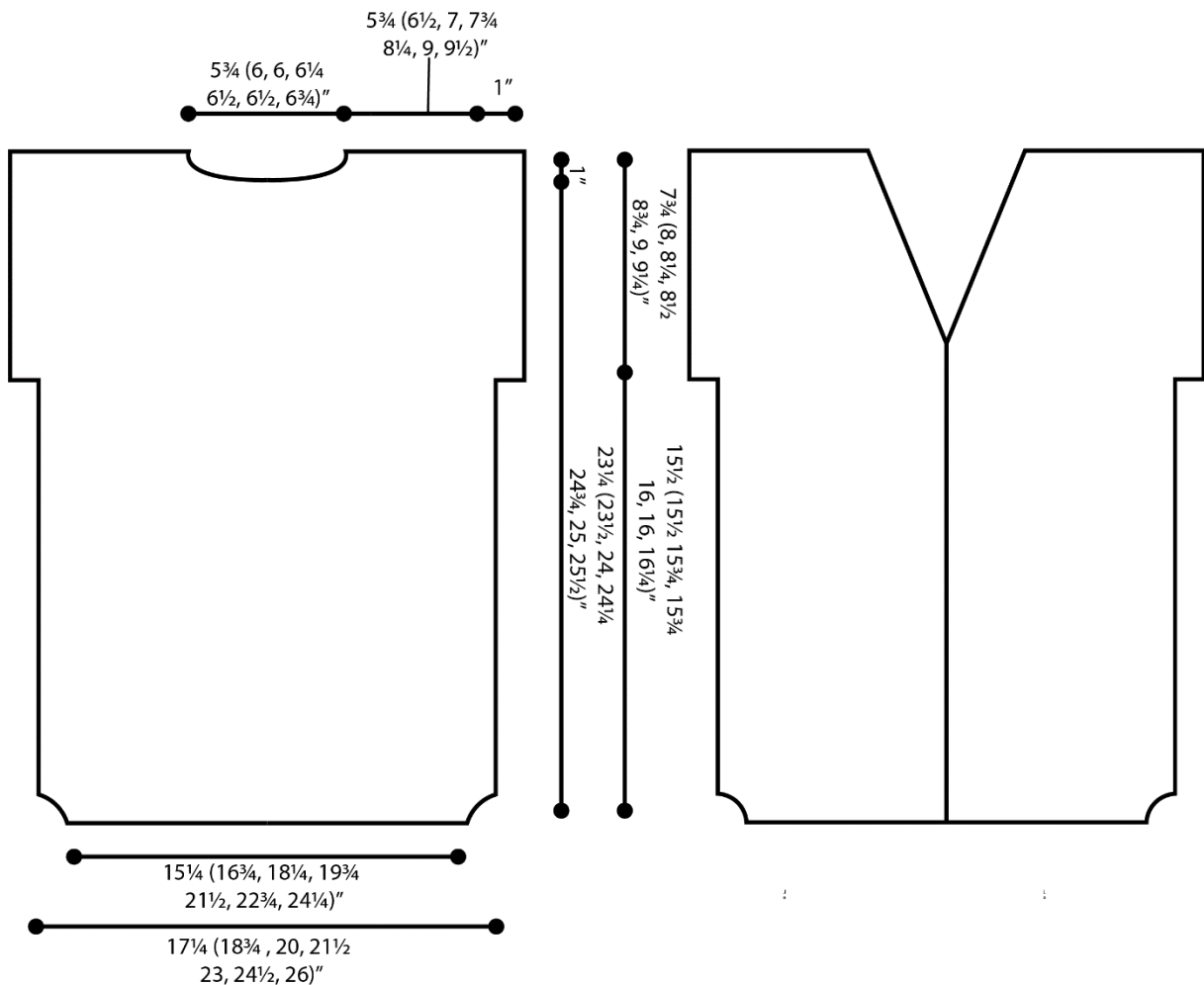
beg	begin(ning)
cont	continue
dec'd	decreased
est'd	established
k	knit
k2tog	knit 2 together
meas	measures
ndl	needle
p	purl
patt	pattern
pwise	purlwise
rem	remain
rep	repeat
ssk	slip, slip, knit
st(s)	stitch(es)
tog	together
wyib	with yarn held back
yo	yarn over

Lovely Lace



Key

- RS - knit, WS - purl
- ssk
- yo
- k2tog
- repeat



Knit. Relax. Smile. Repeat!

2017 © Universal Yarn, Inc.

All rights reserved.

www.universalyarn.com

This pattern may not be reproduced for business, trade or sale.