



PATTERN COLLECTION

Accessories



Cupid's Candy Bags

Designed by Rachel Brockman

SKILL

Knitting

DIFFICULTY

Easy

SIZES

Small (Large)

FINISHED MEASUREMENTS

Circumference: 6 (8 $\frac{3}{4}$)"

Height: 6 $\frac{3}{4}$ (8 $\frac{3}{4}$)"

MATERIALS

[Universal Yarn Bamboo Pop](#) (50% bamboo, 50% cotton; 100g/292 yds)

- 141 Bubblegum (Small) - 1 ball
- 104 Rose (Large) - 1 ball

Needle: US 6 (4 mm) set of DPNs (or your preferred needle for knitting small circumferences) *or size needed to obtain gauge*

Notions: Tapestry needle, stitch markers

GAUGE

23 sts x 31 rnds = 4" in Mini Cable patt

Save time, check your gauge.

Knit, Relax, Smile, Repeat!

2024 © Universal Yarn, Inc.

www.universalyarn.com

All rights reserved. This pattern may not be reproduced for business, trade or sale.

Questions? Contact patterns@universalyarn.com

PATTERN NOTES

Perfectly sized to fit a chocolate bar or two, Cupid's Candy Bag is the perfect quick knit for your sweetheart on Valentine's Day. Decorated with braids of twisted stitches and completed with I-cord ties, you'll be delighted with how quickly these work up and will be tempted to knit a goody bag for everyone you love.

This pouch is knit in the round from the top down. The bottom joined together using the three-needle bind-off. Finally, an I-Cord is created and threaded through the Eyelet Section to serve as a closure tie for the bags.

Tip! For a more custom-sized pouch, you can easily lengthen the pattern by adding additional vertical repeats during the Mini Cable section. You can increase the width of the bag by adding additional repeats of the pattern stitch by adding multiples of 8 to the counts provided (*note: adding 4 stitches to each the "front" and "back" adds a total of 8 stitches, or one repeat*).

I-Cord

Cast on 3 sts to dpn. * K3, slide sts to other end of ndl and place in left hand; rep from * until desired length is reached.

STITCH GUIDE

Right Twist (RT): K2tog but do not slip st from ndl, knit the first st again, slip both sts from ndl.

Left Twist (LT): Knit the second st on the left ndl through the back loop, knit the first st through the front loop, slip both sts from ndl.

Mini Cable

(multiple of 4 sts)

Rnd 1: * P1, RT, k1; rep from * to end.

Rnd 2: * P1, k3; rep from * to end.

Rnd 3: * P1, k1, LT; rep from * to end.

Rnd 4: Rep Rnd 2.

Rep Rnds 1-4 for patt.

POUCH

Rib Section (Opening)

Cast on 34 (50) sts. PM and join to knit in the rnd, being careful not to twist.

Rnd 1: * [P1, k3] 4 (6) times, p1; rep from * to end.

Rep Rnd 1 until piece meas approx. 1½".

Eyelet Section

Note: The eyelets created in this section will be used to thread the I-Cord through to close the bag.

Rnd 1: Knit.

Rnd 2: Purl.

Rnd 3: * [K1, k2tog, yo, k1] 4 (6) times, k1; rep from * to end.

Rnd 4: Purl.

Cable Section

Set-up Rnd: * [P1, k3] 4 (6) times, p1; rep from * to end.

Rnd 1: * [P1, RT, k1] 4 (6) times, p1; rep from * to end.

Rnd 2: * [P1, k3] 4 (6) times, p1; rep from * to end.

Rnd 3: * [P1, k1, LT] 4 (6) times, p1; rep from * to end.

Rnd 4: Rep Rnd 2.

Rep Rnds 1-4, 8 (11) more times. Piece meas approx. 6¾ (8¾)" from cast-on edge.

Turn work inside out so that RS is facing together. Divide first 17 (25) and last 17 (25) sts onto separate needles and hold them parallel to one another. Bind off all sts using the three-needle bind-off.

FINISHING

Gently wash and block to finished measurements. Weave in ends.

I-Cord Drawstring

Make an I-Cord approx. 13 (15)" long. Fasten off and weave in ends.

Lay your work flat. Note that the "front" and "back" are the same. The "sides" are created with a 2-stitch column of reverse Stockinette stitch.

With the RS facing you, begin with the 3rd (4th) eyelet on the "front". Thread the I-Cord through each eyelet around, ending with the 2nd (3rd) eyelet at the center of the "front".

Form a bow and tie to close Pouch.

Knit, Relax, Smile, Repeat!

2024 © Universal Yarn, Inc.

www.universalyarn.com

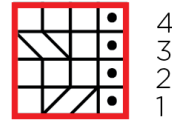
All rights reserved. This pattern may not be reproduced for business, trade or sale.

Questions? Contact patterns@universalyarn.com

Abbreviations

approx	approximately
dpn(s)	double pointed needle(s)
k	knit
k2tog	knit 2 stitches together (1 st dec'd)
m	marker
meas	measures
p	purl
patt	pattern
pm	place marker
rep	repeat
rnd	round
RS	right side
st(s)	stitch(es)
WS	wrong side
yo	yarn over

Mini Cable



Key

	pattern repeat
	knit
	purl
	RT
	LT

Knit, Relax, Smile, Repeat!

2024 © Universal Yarn, Inc.

www.universalyarn.com

All rights reserved. This pattern may not be reproduced for business, trade or sale.

Questions? Contact patterns@universalyarn.com