



Pattern Collection

Crocheted Shawl (with sequins)

SKILL LEVEL

Intermediate

FINISHED MEASUREMENTS

Approximately 48" x 30"

MATERIALS

Yarn: Rozetti Cotton Gold (65% Cotton, 27% Paillettes, 8% Glitter Yarn), 200yds/25g.

• #1091 – 6 balls

Hook: US B-1 (2.25mm) crochet hook *or size to obtain gauge.*

Notions: Tapestry needle

GAUGE

4 Fans = 3¾"; 14 rows = 4" in pattern.

Take your time to check for correct gauge.

ABBREVIATIONS

ch	chain
dc	double crochet
dtr	double treble crochet
rep	repeat
sc	single crochet
sk	skip
sl st	slip stitch
sp(s)	space(s)
st(s)	stitch(es)
tr	treble crochet



Ry Designs

© 2010 Distributed by Universal Yarn

www.universalyarn.com

All rights reserved.

This pattern may not be reproduced for business, trade or sale.

SPECIAL STITCH

Fan: Work ([dtr, ch2] 4 times, dtr) in specified space.

SHAWL

Ch10 and join with a sl st to form a ring.

Row 1: Ch7 (counts as dtr, ch2), ([dtr, ch2] 5 times, dtr) in ring, turn – 1 fan.

Row 2: Ch7 (counts as tr, ch3), sk 1 ch-2 sp and dtr, dc in next ch-2 sp, ch3, sk 1 dtr and ch-2 sp, sc in next dtr (center of fan), ch3, sk 1 ch-2 sp and dtr, dc in next ch-2 sp, ch3, tr in ch-7 sp, turn.

Row 3: Ch7 (counts as dtr, ch2), work Fan in first ch-3 sp, ch2, sk next ch-3 sp, sc in sc, ch2, sk next ch-3 sp, work [Fan, ch2, dtr] in ch-7 sp, turn – 2 fans.

Row 4: Ch7 (counts as tr, ch3), sk 1 ch-2 sp and dtr, dc in next ch-2 sp, ch3, sk 1 dtr and ch-2 sp, sc in next dtr (center of fan), ch3, sk 1 ch-2 sp and dtr, dc in next ch-2 sp, ch3, dc in 1st ch-2 sp of next fan, ch3, sk 1 dtr and ch-2 sp, sc in next dtr (center of fan), ch3, sk 1 ch-2 sp and dtr, dc in next ch-2 sp, ch3, tr in ch-7 sp, turn.

Row 5: Ch7 (counts as dtr, ch2), * work Fan in next ch-3 sp, ch2, sk next ch-3 sp, sc in sc, ch2, sk next ch-3 sp; rep from * once, end with (Fan, ch2, dtr) in ch-7 sp, turn – 3 fans.

Row 6: Ch7 (counts as tr, ch3), sk 1 ch-2 sp and dtr, dc in next ch-2 sp, ch3, sk 1 dtr and ch-2 sp, sc in next dtr (center of fan), ch3, sk 1 ch-2 sp and dtr, dc in next ch-2 sp, * ch3, dc in 1st ch-2 sp of next fan, ch3, sk 1 dtr and ch-2 sp, sc in next dtr (center of fan), ch3, sk 1 ch-2 sp and dtr, dc in next ch-2 sp; rep from *, end with ch3, tr in ch-7 sp, turn.

Row 7: Ch7 (counts as dtr, ch2), * work Fan in next ch-3 sp, ch2, sk next ch-3 sp, sc in sc, ch2, sk next ch-3 sp; rep from *, end with (Fan, ch2, dtr) in ch-7 sp, turn – 4 fans.

Rows 8-77: Repeat Rows 6 and 7 35 times – 39 fans. Do not turn after working Row 77.

INNER BORDER

Note: The inner border is worked along the two short sides of the triangular shawl only.

Row 1: Ch12, sc in same ch-7 sp as fan just worked, (ch12, sc) in each ch-7 sp to corner, work (ch12, sc) twice in corner ch-10 ring, (ch12, sc) in each ch-7 sp to end, ch12, sl st in 5th ch of beginning ch-7 from Row 77, turn.

Row 2: (Ch12, sc) in each ch-12 sp to corner, (ch12, sc) twice in corner sp, (ch12, sc) in each ch-12 sp to end, turn.

Row 3: Ch12, work Fan in next ch-12 sp, * ch1, work Fan in next ch-12 sp; rep from * to end, turn.

Row 4: (Ch12, sc in center dtr of fan) in each fan to corner, ch12, sc in 2nd ch-2 sp of corner fan, ch12, sc in 3rd ch-2 sp of corner fan, (ch 12, sc in center dtr of fan) in each fan to end, ch12, sc in ch-12 sp, turn.

Row 5: (Ch12, sc) in each ch-12 sp to corner, (ch12, sc) twice in corner sp, (ch12, sc) in each ch-12 sp to end, turn.

Rows 6-13: Repeat Rows 2-5 twice.

Row 14: Repeat Row 2, do not turn.

OUTER BORDER

Note: Row 15 is worked across top of shawl only, Row 16 is worked around entire edge of triangle.

Row 15: Ch7 (counts as tr, ch3), work [dc, ch3, sc, ch3, dc, ch3] 5 times evenly spaced across 7 ch-12 sps along edge of Inner Border, work as for Row 6 across body of shawl, work [dc, ch3, sc, ch3, dc, ch3] 5 times evenly spaced across 7 ch-12 sps along edge of Inner Border, tr in last ch-12 sp, turn.

Row 16: Work as for Row 7 across top of shawl (50 fans), * ch20, join with a sl st in 8th ch from hook to form a ring, (ch5, 3dtr, ch5, sc) 3 times in ring, ch12, sk 1 ch-12 sp, sc in next ch-12 sp; rep from * around both short sides, working repeat twice in corner sp; fasten off.

FINISHING

Weave in all ends and block shawl.



Ry Designs

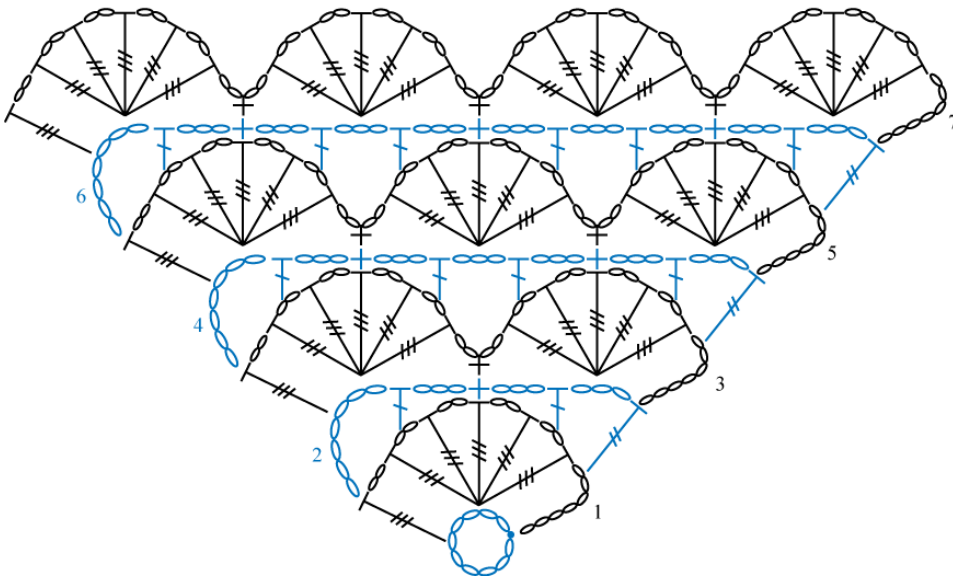
© 2010 Distributed by Universal Yarn

www.universalyarn.com

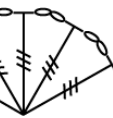
All rights reserved.

This pattern may not be reproduced for business, trade or sale.

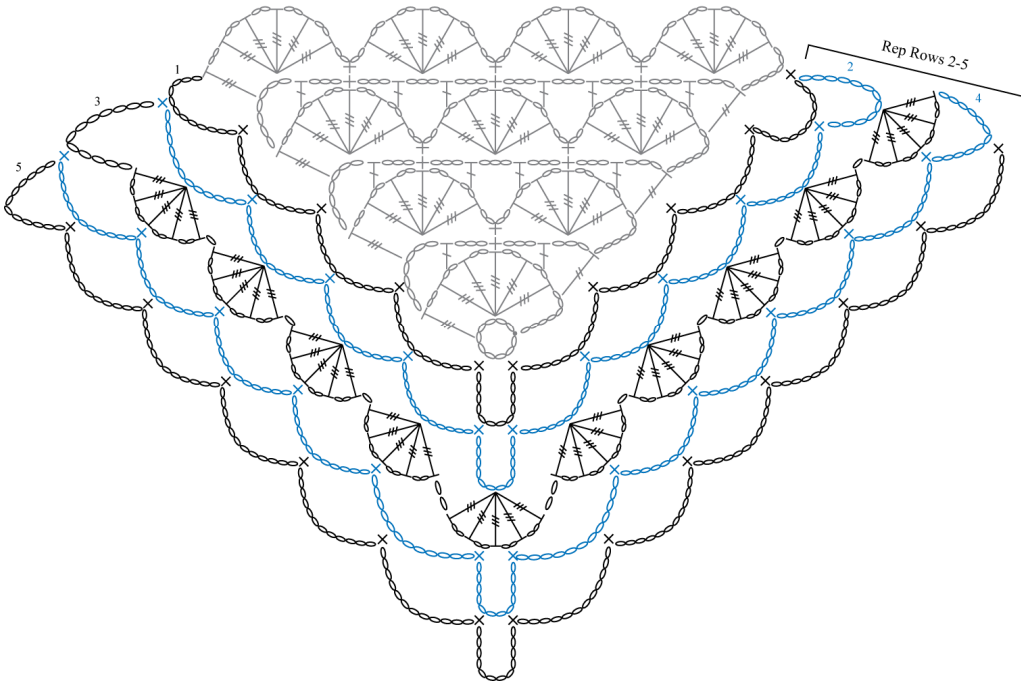
Shawl Pattern



Key:

- = chain (ch)
- = slip stitch (sl st)
- + = single crochet (sc)
- ┆ = double crochet (dc)
- ┆ = treble crochet (tr)
- ≡ = double treble crochet (dtr)
-  = fan

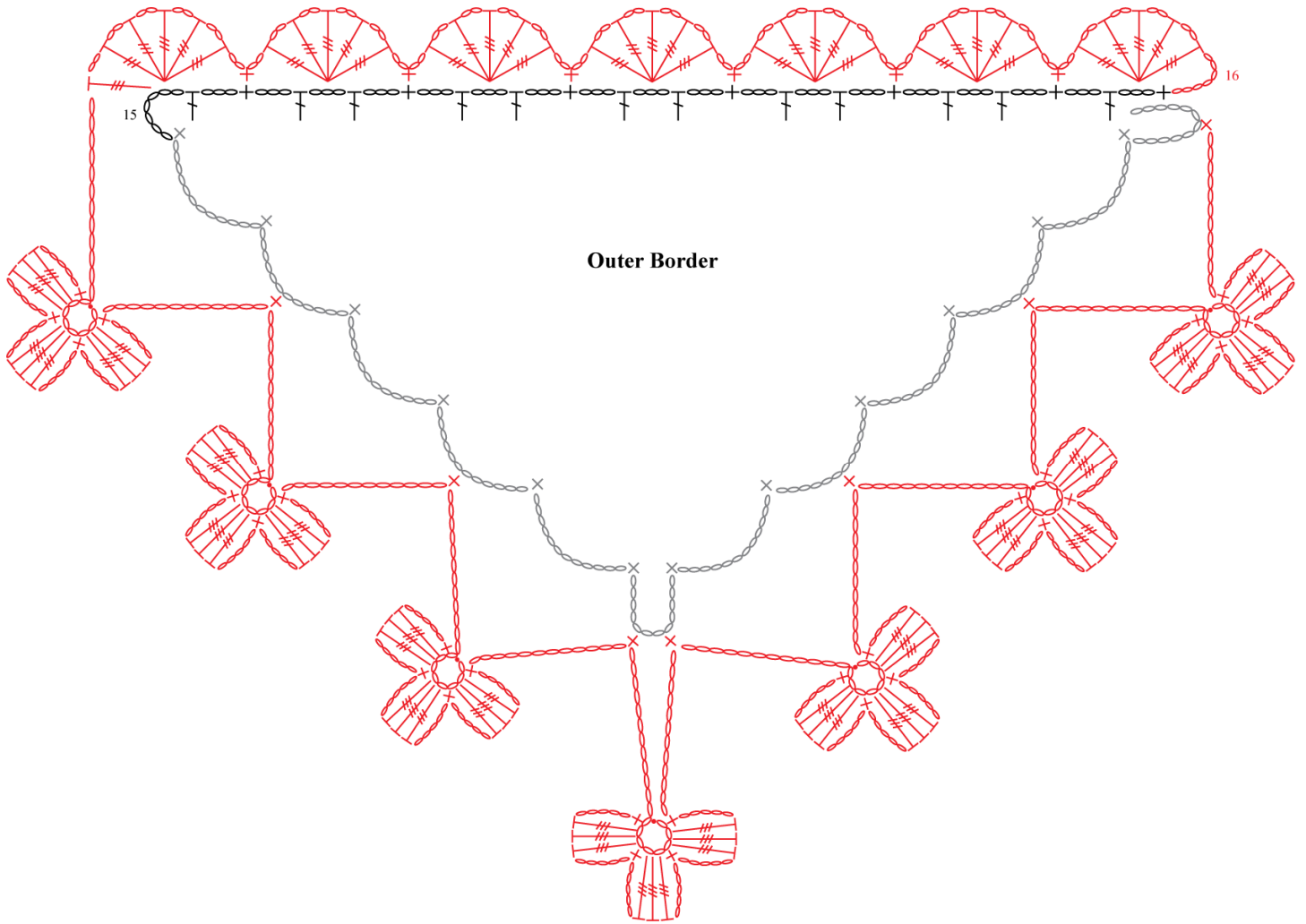
Inner Border



Ry Designs

© 2010 Distributed by Universal Yarn
www.universalyarn.com
 All rights reserved.

This pattern may not be reproduced for business, trade or sale.



Outer Border

Ry Designs

© 2010 Distributed by Universal Yarn
www.universalyarn.com
All rights reserved.

This pattern may not be reproduced for business, trade or sale.