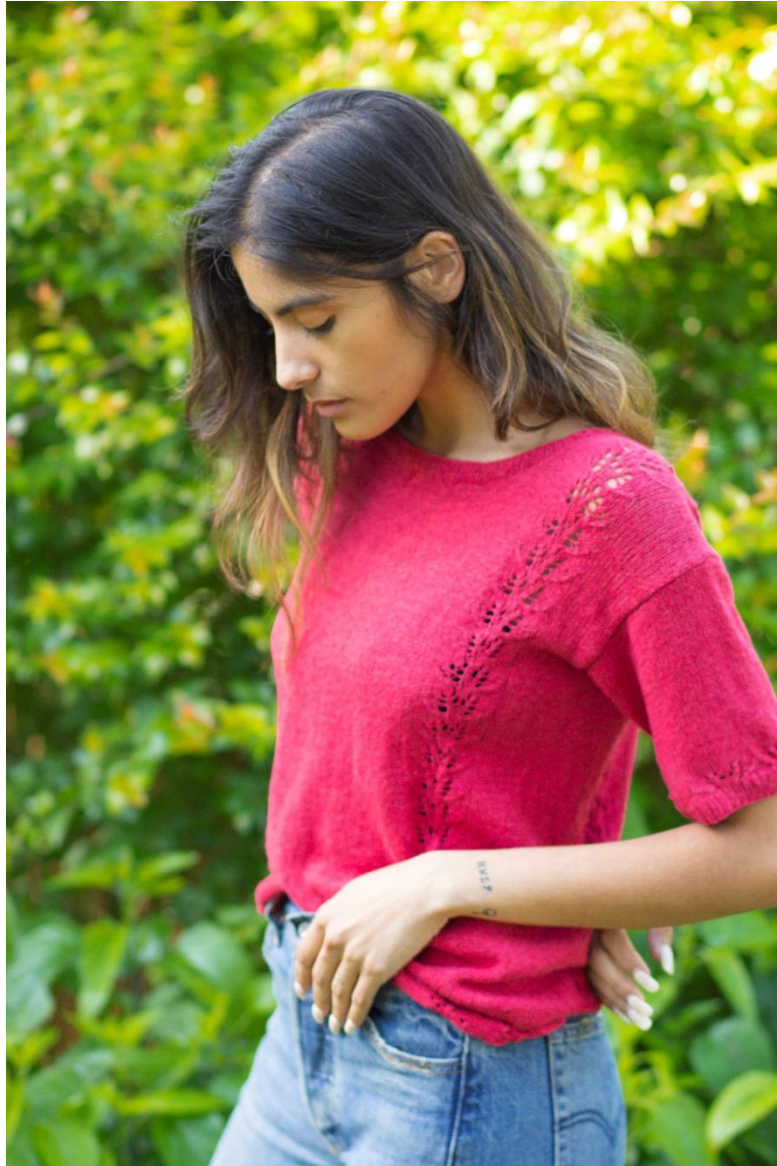




PATTERN COLLECTION

Women



Crimson Tee

Designed by Aubrey Busek

DIFFICULTY

Intermediate

SIZES

Extra Small (Small, Medium, Large, 1X, 2X, 3X, 4X, 5X)

Shown in Small Size with approx 2" of positive ease.

FINISHED MEASUREMENTS

Bust: 30 (34½, 38½, 42¾, 47¼, 51½, 55¾, 60, 64¼)"

Length: 20½ (21, 21½, 22½, 23, 23¾, 24½, 25, 25½)"

MATERIALS

Universal Yarn *Bamboo Pop Sock* (55% bamboo, 37% cotton, 8% PBT; 100g/492 yds)

- 608 Pomegranate - 2 (3, 3, 3, 4, 4, 4, 4, 5) balls

Needle: US Size 3 (3.25 mm) 24-40" circular and straight, *or size needed to obtain gauge*

US Size 2 (3 mm) 16" circular and straight

Notions: Tapestry needle, stitch markers

GAUGE

28 sts x 36 rows = 4" in Stockinette Stitch (St st) with larger ndl

Save time, check your gauge.

Knit, Relax, Smile, Repeat!

2021 © Universal Yarn, Inc.

www.universalyarn.com

All rights reserved. This pattern may not be reproduced for business, trade or sale.

Questions? Contact patterns@universalyarn.com

PATTERN NOTES

Light and delicate like the blooms of your favorite flower, the Crimson Tee is sure to complete your favorite summer outfit. The simple silhouette is complemented by a lace motif that creates a scalloped hem and lovely panels along the front and back. The drapery fabric of Bamboo Pop Sock will keep you cool and comfortable thanks to its bamboo and cotton fibers.

This sweater is knit in the round from the bottom up. The front and back are separated at the underarms and worked flat. The shoulders are joined with a three-needle-bind-off, and stitches are picked up for the neck edging. The sleeves are knit flat and seamed.

STITCH GUIDE

K1, P1 Rib

(even number of sts, knit flat)

Row 1 (RS): * K1, p1; rep from * to end.

Rep Row 1 for patt.

K1, P1 Rib

(odd number of sts, knit flat)

Row 1 (RS): * K1, p1; rep from * to last st, k1.

Row 2 (WS): * P1, k1; rep from * to last st, p1.

Rep Rows 1-2 for patt.

K1, P1 Rib

(even number of sts, knit in the rnd)

Rnd 1: * K1, p1; rep from * to end.

Rep Rnd 1 for patt.

Leaves Lace

(begins as a multiple of 15 sts, knit flat)

Note: Stitch counts fluctuate throughout.

Row 1 (RS): * K4, k2tog, yo, k3, yo, ssk, k4; rep from * to end.

Row 2 (WS): * P2, ssp, p7, p2tog, p2; rep from * to end – 2 sts dec'd, 13 sts each rep.

Row 3: * K2, k2tog, [k1, yo] 4 times, k1, ssk, k2; rep from * to end – 2 sts inc'd, 15 sts each rep.

Row 4: * Ssp, p11, p2tog; rep from * to end – 2 sts dec'd, 13 sts each rep.

Row 5: * Ktog, k2, yo, k1, yo, k3, yo, k1, yo, k2, ssk; rep from * to end – 2 sts inc'd, 15 sts each rep.

Row 6: Purl.

Row 7: Knit.

Row 8: Purl.

Rep Rows 1-8 for patt.

Leaves Lace

(begins as a multiple of 15 sts, knit in the rnd)

Note: Stitch counts fluctuate throughout.

Rnd 1: * K4, k2tog, yo, k3, yo, ssk, k4; rep from * to end.

Rnd 2: * K2, k2tog, k7, ssk, k2; rep from * to end – 2 sts dec'd, 13 sts each rep.

Rnd 3: * K2, k2tog, [k1, yo] 4 times, k1, ssk, k2; rep from * to end – 2 sts inc'd, 15 sts each rep.

Rnd 4: * K2tog, k11, ssk; rep from * to end – 2 sts dec'd, 13 sts each rep.

Rnd 5: * Ktog, k2, yo, k1, yo, k3, yo, k1, yo, k2, ssk; rep from * to end – 2 sts inc'd, 15 sts each rep.

Rnds 6-8: Knit.

Rep Rnds 1-8 for patt.

BODY

Hem

Note: You may wish to place markers between pattern repeats to help you stay on track.

With larger ndl, cast on 210 (240, 270, 300, 330, 360, 390, 420, 450) sts. PM and join to knit in the rnd, being careful not to twist.

Rnd 1: Work Rnd 1 of Leaves Lace to end. Patt will be repeated 14 (16, 18, 20, 22, 24, 26, 28, 30) times across each Rnd.

Rnd 2: Work Rnd 2 of Leaves Lace to end.

Cont as est'd through Rnd 8 of Leaves Lace, then rep Rnds 1-8, one more time.

Body

Set-up Rnd: * K15 (15, 15, 15, 30, 30, 45, 45, 45), pm, work next Rnd of Leaves Lace over 15 sts, pm, k45 (60, 75, 90, 75, 90, 75, 90, 105), pm, work next rnd of Leaves Lace over 15 sts, pm, k15 (15, 15, 15, 30, 30, 45, 45, 45); rep from * one more time.

Next Rnd: * Knit to m, sl m, work next rnd of Leaves Lace to m, sl m; rep from * to last m, sl m, knit to end.

Cont as est'd through Rnd 8 of Leaves Lace, then rep Rnds 1-8 until piece meas approx 14 (14, 14, 14½, 14½, 14½, 15, 15, 15)" from cast-on edge, ending with Row 6 or 8 of Leaves Lace patt.

Separate Front and Back

Next Row (RS): Knit to m, sl m, work next Rnd of Leaves Lace to m, sl m, knit to m, sl m, work next Rnd of Leaves Lace to m, sl m, k15 (15, 15, 15, 30, 30, 45, 45, 45), turn. Place 105 (120, 135, 150, 165, 180, 195, 210, 225) Back sts on holder or waste yarn.

Front

Note: You will now begin working flat.

Knit, Relax, Smile, Repeat!

2021 © Universal Yarn, Inc.

www.universalyarn.com

All rights reserved. This pattern may not be reproduced for business, trade or sale.

Questions? Contact patterns@universalyarn.com

Next Row (WS): Purl to m, sl m, work next row of Leaves Lace to m, sl m; rep from * to last m, sl m, purl to end.

Next Row (RS): Knit to m, sl m, work next row of Leaves Lace to m, sl m; rep from * to last m, sl m, knit to end.

Cont as est'd until piece meas approx 3½ (4, 4½, 5, 5½, 6, 6½, 7, 7½)" from Front/Back separation, ending with Row 6 or 8 of Leaves Lace patt.

Next Row (RS): Cont as est'd over 39 (46, 53, 59, 66, 74, 80, 87, 94) Left Front sts, bind off center 27 (28, 29, 32, 33, 32, 35, 36, 37) sts, cont as est'd over 39 (46, 53, 59, 66, 74, 80, 87, 94) Right Front sts. Place Left Front sts on holder or waste yarn.

Shape Right Front Neck

Note: Because stitch counts fluctuate due to increases and decreases in the Leaves Lace pattern (see Stitch Guide), a final stitch count is given at the end of the Neck shaping.

WS Rows 1-17: Cont as est'd to end.

Row 2 (RS): Bind off 2, cont as est'd to end.

RS Rows 4-18: Bind off 1, cont as est'd to end - 29 (36, 43, 49, 56, 64, 70, 77, 84) sts rem.

Neck shaping is complete. Cont even as est'd until piece meas 6½ (7, 7½, 8, 8½, 9, 9½, 10, 10½)" from Front/Back separation, ending with Row 6 or 8 of Leaves Lace patt - 29 (36, 43, 49, 56, 64, 70, 77, 84) sts rem. Place rem live sts on holder or waste yarn. Return Left Front sts to ndl, ready to work a WS row.

Shape Left Front Neck

Note: Because stitch counts fluctuate due to increases and decreases in the Leaves Lace pattern (see Stitch Guide), a final stitch count is given at the end of the Neck shaping.

Row 1 (WS): Bind off 2, cont as est'd to end.

RS Rows 2-16: Cont as est'd to end.

WS Rows 3-17: Bind off 1, cont as est'd.

Neck shaping is complete. Cont even as est'd until piece meas 6½ (7, 7½, 8, 8½, 9, 9½, 10, 10½)" from Front/Back separation, ending with Row 6 or 8 of Leaves Lace patt - 29 (36, 43, 49, 56, 64, 70, 77, 84) sts rem. Place rem live sts on holder or waste yarn. Return held Back sts to ndl, ready to work a RS Row.

BACK

Next Row (RS): Knit to m, sl m, work next row of Leaves Lace to m, sl m; rep from * to last m, sl m, knit to end.

Complete as for Front.

SLEEVES

Note: Take care to work the correct even/odd rib stitch for your size.

With smaller ndl, cast on 77 (77, 92, 92, 107, 122, 122, 137, 137) sts.

Row 1 (RS): Work Row 1 of K1, P1 Rib to end.

Cont as est'd in K1, P1 Rib until piece meas approx 1" from cast-on edge, ending with a WS Row. Change to larger ndl.

Establish Pattern

Note: You may wish to place markers between pattern repeats to help you stay on track.

Next Row (RS): K1, work Row 1 of Leaves Lace to last st, k1. Patt will be repeated 5 (5, 6, 6, 7, 8, 8, 9) times across each row.

Next Row (WS): P1, work Row 2 of Leaves Lace to last st, p1.

Cont as est'd through Row 8 of Leaves Lace.

Main Sleeve

Row 1 (RS): Knit.

Row 2 (WS): Purl.

Shape Sleeve

Note: Maintain St st as est'd throughout Sleeve Shaping.

Inc Row (RS): K1, m1R, knit to last st, m1L, k1 - 2 sts inc'd, 79 (79, 94, 94, 109, 124, 124, 139, 139) sts.

Even Row (WS): Purl.

Rep Inc Row every 4 (2, 4, 2, 4, 24, 4, 24, 6) rows, 6 (8, 6, 6, 3, 1, 3, 1, 4) more time(s), then every 6 (4, 6, 4, 6, 26, 6, 26, 8) rows, 0 (2, 0, 3, 2, 0, 2, 0, 0) times - 12 (20, 12, 18, 10, 2, 10, 2, 8) sts inc'd, 91 (99, 106, 112, 119, 126, 134, 141, 147) sts.

Cont even as est'd in St st until piece meas 6½" from cast-on edge, ending with a WS Row. Bind off all sts.

FINISHING

With RS facing tog, join Left Front and Left Back shoulder sts using the three-needle bind-off. Rep for Right Front and Right Back sts.

Gently wash and block to finished to measurements. Weave in ends. Sew Sleeves to Body. Sew Sleeve seams.

Neck Edging

With smaller circ ndl, pick up and knit 122 (124, 126, 132, 134, 132, 138, 140, 142) sts. PM and join to knit in the round.

Rnd 1: Work Rnd 1 of K1, P1 Rib to end.

Cont as est'd in K1, P1 Rib for 5 more rnds. Bind off all sts in patt.

Weave in rem ends.

Knit, Relax, Smile, Repeat!

2021 © Universal Yarn, Inc.

www.universalyarn.com

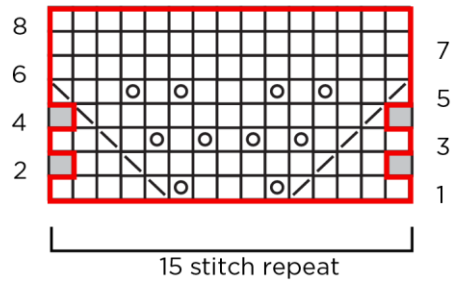
All rights reserved. This pattern may not be reproduced for business, trade or sale.

Questions? Contact patterns@universalyarn.com

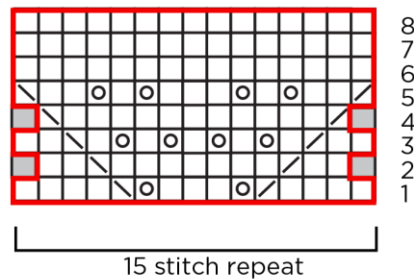
Abbreviations

approx	approximately
cont	continue
est'd	established
garter st	knit every row
inc('d)	increase(d)
k	knit
m	marker
m1L	insert left needle from front to back under horizontal strand of yarn lying between st just worked and next st, knit or purl this st through the back loop (1 st inc'd)
m1R	insert left needle from back to front under horizontal strand of yarn lying between st just worked and next st, knit or purl this st through the front loop (1 st inc'd)
ndl	needle
p	purl
patt	pattern
pm	place marker
rem	remain(ing)
rep	repeat
rnd	round
St st	Stockinette stitch (knit on RS rows, purl on WS rows; in the rnd, knit every rnd)
st(s)	stitch(es)
tog	together
WS	wrong side
yo	yarn over

Leaves Lace Flat



Leaves Lace In The Round



Key

- pattern repeat
- knit on RS, purl on WS
- purl on RS, knit on WS
- yarn over
- / ssk on RS, ssp on WS
- \ k2tog on RS, p2tog on WS
- no stitch

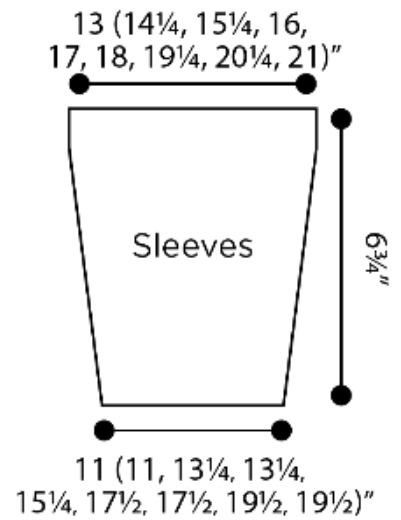
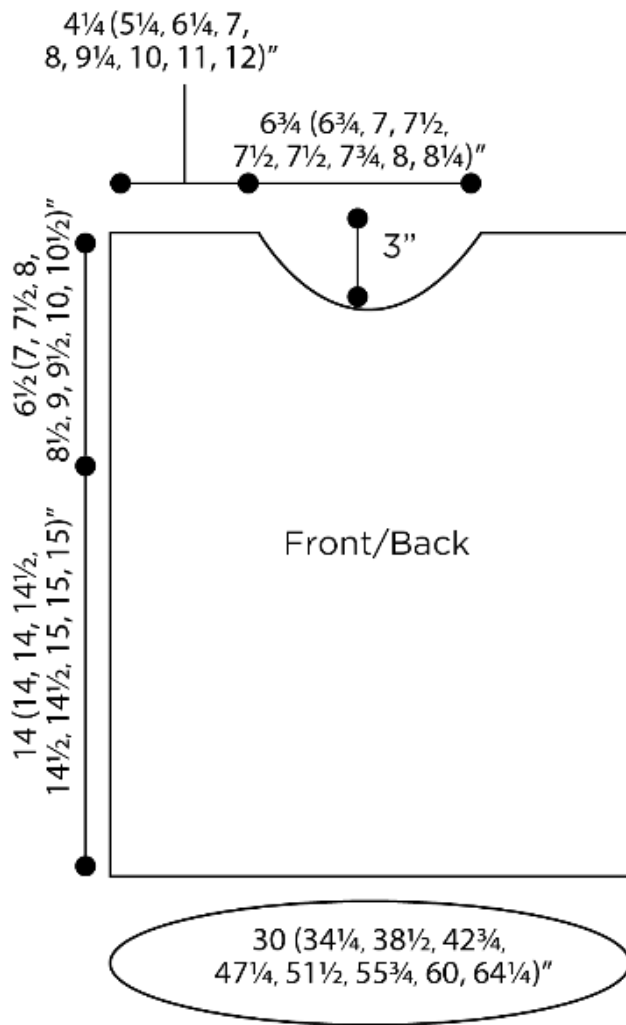
Knit, Relax, Smile, Repeat!

2021 © Universal Yarn, Inc.

www.universalyarn.com

All rights reserved. This pattern may not be reproduced for business, trade or sale.

Questions? Contact patterns@universalyarn.com



Knit, Relax, Smile, Repeat!

2021 © Universal Yarn, Inc.

www.universalyarn.com

All rights reserved. This pattern may not be reproduced for business, trade or sale.

Questions? Contact patterns@universalyarn.com