



Pattern Collection: Accessories



Coffee Beans and Sugar Cubes

Designed by Universal Yarn Design Team

SIZE

Adult

FINISHED MEASUREMENTS

Circumference: 20"

Height: 9"

MATERIALS

Universal Yarn *Uptown Bulky* (100% anti-pilling acrylic; 100g/87 g)

- 416 Iron (MC) – 1 ball
- 421 Coral (CC) – 1 ball
- *Note: one ball of each color will make both hats shown*

Needles: US Size 11 (8 mm) 16" circular, set of dpns or size needed to obtain gauge

US Size 10 (6 mm) 16" circular

Notions: Stitch marker, tapestry needle

GAUGE

11 sts x 14 rows = 4" in stranded knitting using larger ndl

Save time, check your gauge.

Knit, Relax, Smile, Repeat!

2014 © Universal Yarn, Inc.

All rights reserved.

www.universalyarn.com

This pattern may not be reproduced for business, trade or sale.

PATTERN NOTES

The instructions are written for the hat shown in the bottom of the photo on the first page. For the top hat, simply reverse the colors.

HAT

With smaller ndl and MC, cast on 48 sts. PM and join to work in the rnd.

Brim

Rnd 1: * K1 tbl, p1; rep from * to end. Rep Rnd 1, 4 more times.

Hat Body

Switch to larger ndl.

Inc rnd: * K6, m1; rep from * to end – 56 sts. Knit 1 rnd.

Establish Pattern

Rep Rows 1-4 of Cubed patt, 4 times.

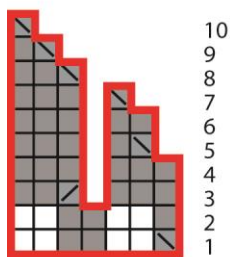
Shape Crown

Work Rows 1-10 of Crown Shaping Chart – 7 sts rem. Break yarn leaving 8" tail. Pass tail through rem live sts, fasten off.

FINISHING

Weave in ends and block.

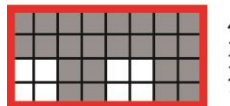
Crown Shaping



Key

-  MC
-  CC
-  ssk
-  k2tog
-  pattern repeat

Cubed



Knit, Relax, Smile, Repeat!

2014 © Universal Yarn, Inc.

All rights reserved.

www.universalyarn.com

This pattern may not be reproduced for business, trade or sale.