



Pattern Collection: Men



Chapel Hill Vest

Designed by Amy Gunderson

SIZES

Small (Medium, Large, 1X, 2X, 3X)
Shown in Medium size modeled with
3" negative ease.

Note: Stitch patterns are very stretchy.

*Choose a size with up to 5" of negative ease
and 1-2" positive ease.*

FINISHED MEASUREMENTS

Chest: 34½ (37, 42, 44½, 49¼, 54¼)"

MATERIALS

Universal Yarn Deluxe Worsted (100%
wool; 100g/220 yds)

- 13104 Slate – 4 (5, 6, 6, 7, 7) hanks

Needles: US Size 8 (5 mm) straight *or size
needed to obtain gauge*

US Size 7 (4.5 mm) straight, 16" circular (for
Neck & Armhole edging)

Notions: Tapestry needle, stitch markers,
removable stitch marker, safety pin, cable
needle (cn)

GAUGE

18 sts x 24 rows = 4" in St st using larger ndl.
28-st Chapel Cable = 4¾" wide using larger ndl
26 sts x 24 rows = 4" in Lattice patt using
larger ndl

Save time, check your gauge.

Knit. Relax. Smile. Repeat!

2019 © Universal Yarn, Inc.

All rights reserved.

www.universalyarn.com

This pattern may not be reproduced for business, trade or sale.

PATTERN NOTES

Stately cables will have you looking smart in this men's vest. Layer it over a button down and you have the perfect autumn ensemble. The Chapel Hill Vest was once available only through the Deluxe Cable Collection, but we've set this pattern free.

This vest is worked flat in two pieces and seamed.

STITCH GUIDE

Left Twist (LT): Knit the second st on the left ndl through the back loop, knit the first st through the front loop, slip both sts from ndl.

1x1x1 Right Purl Cross (RPC): Sl next 2 sts to cn and hold in back, k1 from left ndl, sl second slipped st from cn back to left ndl and purl, sl first slipped st from cn back to left ndl and knit.

1x1x1 Left Purl Cross (LPC): Sl next 2 sts to cn and hold in front, k1 from left ndl, sl second slipped st from cn back to left ndl and purl, sl first slipped st from cn back to left ndl and knit.

2x1 Right Purl Cross (RPC): Sl next st to cn and hold in back, k2 from left ndl, p1 from cn.

2x1 Left Purl Cross (LPC): Sl next 2 sts to cn and hold in front, p1 from left ndl, k2 from cn.

2x2 Right Cross (RC): Sl next 2 sts to cn and hold in back, k2 from left ndl, k2 from cn.

2x2 Left Cross (LC): Sl next 2 sts to cn and hold in front, k2 from left ndl, k2 from cn.

2x2 Right Purl Cross (RPC): Sl next 2 sts to cn and hold in back, k2 from left ndl, p2 from cn.

2x2 Left Purl Cross (LPC): Sl next 2 sts to cn and hold in front, k2 from left ndl, k2 from cn.

Lattice

(multiple of 4 sts + 5)

Row 1 (RS): P1, * k1, p1; rep from * to end.

Row 2 (WS): * K1, p1; rep from * to last st, k1.

Row 3: P1, * 1x1x1 RPC, p1; rep from * to end.

Row 4: * K1, p1; rep from * to last st, k1.

Rows 5-6: Rep Rows 1-2.

Row 7: P1, k1, p1, * 1x1x1 LPC, p1; rep from * to last 2 sts, k1, p1.

Row 8: * K1, p1; rep from * to last st, k1.

Rep Rows 1-8 for patt.

K1, P1 Ribbing, worked flat

(even number of sts)

Row 1 (RS): * K1, p1; rep from * to end.

Row 2 (WS): * K1, p1; rep from * to end.

Rep Rows 1-2 for patt.

K1, P1 Ribbing, worked in the round

(even number of sts)

Rnd 1: * K1, p1; rep from * to end. Rep Rnd 1 for patt.

Cable Column

(multiple of 6 sts)

Row 1 (RS): * P1, k4, p1; rep from * to end.

Row 2 (WS): * K1, p4, k1; rep from * to end.

Row 3: * P1, 2x2 LC, p1; rep from * to end.

Row 4: * K1, p4, k1; rep from * to end.

Rep Rows 1-4 for patt.

Chapel Cable

(panel beg with 28 sts, incs to 30 sts)

Row 1 (RS): P5, k4, p4, LT, p4, k4, p5.

Row 2 (WS): K5, p4, k4, p2, k4, p4, k5.

Rows 3-4: Rep Rows 1-2.

Row 5: P5, k4, m1, p4, LT, p4, m1, k4, p5 – 30 sts.

Row 6: K5, p5, k3, k2tog, ssk, k3, p5, k5 – 28 sts rem.

Row 7: P5, k4, m1, k1, p8, k1, m1, k4, p5 – 30 sts.

Row 8: K5, p6, k8, p6, k5.

Row 9: P5, k4, 2x2 LPC, p4, 2x2 RPC, k4, p5.

Row 10: K5, p4, k2, p2, k4, p2, k2, p4, k5.

Row 11: P4, 2x1 RPC, k2, p2, 2x2 LPC, 2x2 RPC, p2, k2, 2x1 LPC, p4.

Row 12: K4, p2, k1, p2, k4, p4, k4, p2, k1, p2, k4.

Row 13: P3, 2x1 RPC, p1, 2x1 LPC, p3, 2x2 LC, p3, 2x1 RPC, p1, 2x1 LPC, p3.

Row 14: [K3, p2] 2 times, k3, p4, [k3, p2] 2 times, k3.

Row 15: P3, k2, p3, 2x1 LPC, 2x2 RPC, 2x2 LPC, 2x1 RPC, p3, k2, p3.

Row 16: K3, p2, [k4, p4] 2 times, k4, p2, k3.

Row 17: P3, 2x1 LPC, p3, 2x2 RC, p4, 2x2 RC, p3, 2x1 RPC, p3.

Row 18: K4, p2, k3, p4, k4, p4, k3, p2, k4.

Row 19: P4, 2x1 LPC, [2x2 RPC, 2x2 LPC] 2 times, 2x1 RPC, p4.

Knit. Relax. Smile. Repeat!

2019 © Universal Yarn, Inc.

All rights reserved.

www.universalyarn.com

This pattern may not be reproduced for business, trade or sale.

Row 20: K5, [p4, k4] 2 times, p4, k5.
Row 21: P5, [2x2 LC, p4] 2 times, 2x2 LC, p5.
Row 22: K5, [p4, k4] 2 times, p4, k5.
Row 23: P4, 2x1 RpC, [2x2 LPC, 2x2 RPC] 2 times, 2x1 LPC, p4.
Row 24: K4, p2, k3, p4, k4, p4, k3, p2, k4.
Row 25: P4, k2, p3, 2x2 RC, p4, 2x2 RC, p3, k2, p4.
Row 26: K4, p2, k3, p4, k4, p4, k3, p2, k4.
Row 27: P4, 2x1 LPC, p1, 2x1 RPC, ssk, p4, k2tog, 2x1 LPC, p1, 2x1 RPC, p4 –28 sts rem.
Row 28: K5, [p2, k1] 2 times, p1, k4, p1, [k1, p2] 2 times, k5.
Row 29: P5, k2, 2x1 RPC, p1, LPT, p2, RPT, p1, 2x1 LPC, k2, p5.
Row 30: K5, p4, k3, p1, k2, p1, k3, p4, k5.
Row 31: P5, k4, p3, LPT, RPT, p3, k4, p5.
Row 32: K5, p4, k4, p2, k4, p4, k5.
 Rep Rows 1-32 for patt.



BACK

Hem

With smaller ndl, cast on 118 (126, 142, 150, 166, 182) sts. Work in K1, P1 Ribbing patt until piece meas 2½" from cast-on edge, inc'ing 1 st on last row – 119 (127, 143, 151, 167, 183) sts.

Establish Pattern

Switch to larger ndl.

Row 1 (RS): K1, work Row 1 of Lattice patt over 9 (13, 21, 25, 33, 41) sts, pm, work Row 1 of Cable Column patt over 12 sts, pm, work Row 1 of Lattice patt over 17 sts, pm, work Row 1 of Cable Column patt over 6 sts, pm, work Row 1 of Lattice patt over 29 sts, pm, work Row 1 of Cable Column over 6 sts, pm, work Row 1 of Lattice patt over 17 sts, pm, work Row 1 of Cable Column over 12 sts, pm, work Row 1 of Lattice patt over 9 (13, 21, 25, 33, 41) sts, k1.

Row 2 (WS): P1, [work Row 2 of Lattice patt to m, work Row 2 of Cable Column patt to m] 2 times, work Row 2 of Lattice patt to m, work Row 2 of Cable Column patt to m, work Row 2 of Lattice patt to m, work Row 2 of Cable Column patt to m, work Row 2 of Lattice patt to last st, p1.

Cont in patt as est'd until piece meas 17 (17, 17½, 17½, 18, 18)" from cast on edge, ending with WS row.

Shape Armholes

Bind off 5 (5, 6, 6, 7, 8) sts at beg of next 2 rows – 109 (117, 131, 139, 153, 167) sts rem.

Dec row (RS): K1, k2tog, work in patt to last 3 sts, ssk, k1 – 2 sts dec'd.

Dec row (WS): P1, ssp, work in patt to last 3 sts, p2tog, p1 – 2 sts dec'd.

Cont to work a Dec row every row, - (-, 2, 2, 4, 8) more times, then Dec every RS row, 2 (3, 4, 5, 7, 6) times – 101 (107, 115, 121, 127, 135) sts rem. Work even in patt until Armholes meas 7 (7½, 8, 8½, 9, 9½)", ending with WS row.

Shape Right Shoulder and Neck

Place markers on either side of center 41 (43, 43, 45, 45, 47) sts.

Row 1 (RS): Bind off 8 (8, 10, 10, 11, 12) sts, work to first Neck marker, turn, placing unworked Neck and Left Shoulder sts on holder.

Row 2 (WS): Bind off 3 sts, work in patt to end.

Knit. Relax. Smile. Repeat!

2019 © Universal Yarn, Inc.

All rights reserved.

www.universalyarn.com

This pattern may not be reproduced for business, trade or sale.

Row 3: Bind off 8 (9, 10, 11, 12, 13) sts, work in patt to end.

Row 4: Bind off 3 sts, work in patt to end.

Row 5: Bind off rem 8 (9, 10, 11, 12, 13) sts.

Shape Left Shoulder and Neck

Return sts to ndl.

Row 1 (RS): Bind off center 41 (43, 43, 45, 45, 47) sts, work in patt to end.

Row 2 (WS): Bind off 8 (8, 10, 10, 11, 12) sts, work in patt to end.

Row 3: Bind off 3 sts, work in patt to end.

Row 4: Bind off 8 (9, 10, 11, 12, 13) sts, work in patt to end.

Row 5: Bind off 3 sts, work in patt to end.

Row 6: Bind off rem 8 (9, 10, 11, 12, 13) sts.

FRONT

Hem

With smaller ndl, cast on 118 (126, 142, 150, 166, 182) sts. Work in K1, P1 Ribbing patt until piece meas 2½" from cast-on edge.

Establish Pattern

Switch to larger ndl.

Row 1 (RS): K1, work Row 1 of Lattice patt over 9 (13, 21, 25, 33, 41) sts, pm, work Row 1 of Cable Column patt over 12 sts, pm, work Row 1 of Lattice patt over 17 sts, pm, work Row 1 of Cable Column patt over 6 sts, pm, work Row 1 of Chapel Cable patt over 28 sts, pm, work Row 1 of Cable Column over 6 sts, pm, work Row 1 of Lattice patt over 17 sts, pm, work Row 1 of Cable Column over 12 sts, pm, work Row 1 of Lattice patt over 9 (13, 21, 25, 33, 41) sts, k1.

Row 2 (WS): P1, [work Row 2 of Lattice patt to m, work Row 2 of Cable Column patt to m] 2 times, work Row 2 of Chapel Cable to m, work Row 2 of Cable Column patt to m, work Row 2 of Lattice patt to m, work Row 2 of Cable Column patt to m, work Row 2 of Lattice patt to last st, p1.

Cont in patt as est'd until piece meas 17 (17, 17½, 17½, 18, 18)" from caston edge, ending with WS row.

Shape Armholes

Bind off 5 (5, 6, 6, 7, 8) sts at beg of next 2 rows – 108 (116, 130, 138, 152, 166) sts rem.

Dec row (RS): K1, k2tog, work in patt to last 3 sts, ssk, k1 – 2 sts dec'd.

Dec row (WS): P1, ssp, work in patt to last 3 sts, p2tog, p1 – 2 sts dec'd.

Cont to work a Dec row every row, - (-, 2, 2, 4, 8) more times, then Dec every RS row, 2 (3, 4, 5, 7, 6) times – 100 (106, 114, 120, 126, 134) sts rem. Work even in patt until Armhole meas 2¼ (2½, 3, 3¼, 3¾, 4)" , ending with WS row.

Shape Left Neck

Place center 2 sts on safety pin.– 49 (52, 56, 59, 62, 66) sts each side.

Row 1 (RS): Work in patt to 3 sts bef center m, ssk, k1, place rem unworked sts on holder – 1 st dec'd.

Row 2 (WS): P1, ssp, work in patt to end – 1 st dec'd.

Cont to dec 1 st at Neck edge every row, 23 (24, 24, 25, 25, 26) more times – 24 (26, 30, 32, 35, 38) sts rem.

Work even in patt until Armholes meas 7 (7½, 8, 8½, 9, 9½)" , ending with WS row.

Shape Left Shoulder

Bind off 8 (8, 10, 10, 11, 12) sts at beg of next RS row, 8 (9, 10, 11, 12, 13) sts at beg of next RS row, bind off rem 8 (9, 10, 11, 12, 13) sts at beg of next RS row.

Shape Right Neck

Return sts to ndl.

Row 1 (RS): K1, k2tog, work in patt to end – 1 st dec'd.

Row 2 (WS): Work in patt to last 3 sts, p2tog, p1 – 1 st dec'd.

Cont to dec 1 st at Neck edge every row, 23 (24, 24, 25, 25, 26) more times – 24 (26, 30, 32, 35, 38) sts rem. Work even in patt until Armholes meas 7 (7½, 8, 8½, 9, 9½)" , ending with RS row.

Shape Left Shoulder

Bind off 8 (8, 10, 10, 11, 12) sts at beg of next WS row, 8 (9, 10, 11, 12, 13) sts at beg of next WS row, bind off rem 8 (9, 10, 11, 12, 13) sts at beg of next WS row.

FINISHING

Block pieces to finished measurements. Sew Shoulder and side seams.

Knit. Relax. Smile. Repeat!

2019 © Universal Yarn, Inc.

All rights reserved.

www.universalyarn.com

This pattern may not be reproduced for business, trade or sale.

Neck Edging

With RS facing and smaller circ ndl, pick up and knit 53 (55, 55, 57, 57, 59) sts along Back Neck, 48 (50, 50, 52, 52, 54) sts along Left Front Neck, k2tog from held center sts, place removable marker on this st and move up every rnd, pick up and knit 48 (50, 50, 52, 52, 54) sts along Right Front Neck – 150 (156, 156, 162, 162, 168) sts. PM and join to work in the rnd.

Rnd 1: Work in K1, P1 Ribbing to 1 st bef marked st, sl 2-k1-p2sso, work in K1, P1 Ribbing to end – 2 sts dec'd.

Rep Rnd 1, 7 more times. Bind off all sts in patt.

Armhole Edging

With RS facing and smaller circ ndl, pick up and knit 106 (112, 120, 128, 136, 142) sts evenly around Armhole. PM and join to work in the rnd. Work in K1, P1 Ribbing

FINISHING

Gently wash and block to finished measurements. Weave in ends.

Abbreviations

bef	before
beg	begin(ning)
circ	circular
cn	cable needle
cont	continue
dec('d)	decrease(d)
dpn(s)	double pointed needle(s)
est'd	established
inc('d)	increase(d)
k	knit
k2tog	knit 2 stitches together (1 st dec'd)
kwise	knitwise
m	marker
m1	insert left needle from front to back under horizontal strand of yarn lying between st just worked and next st, knit or purl this st through the back loop (1 st inc'd)
meas	measures

ndl	needle
patt	pattern
p	purl
pm	place marker
pwise	purlwise
p2tog	purl 2 sts together (1 st dec'd)
rem	remain(ing)
rep	repeat
rnd	round
RS	right side
sl	slip
ssk	slip next 2 sts individually knitwise, slip them back to left needle in this position, knit them together through the back loops (1 st dec'd)
st(s)	stitch(es)
St st	Stockinette stitch (knit on RS rows, purl on WS rows; in the rnd, knit every rnd)
WS	wrong side

Knit. Relax. Smile. Repeat!







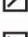
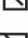
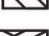

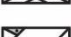
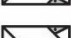

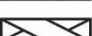




2019 © Universal Yarn, Inc.

All rights reserved.

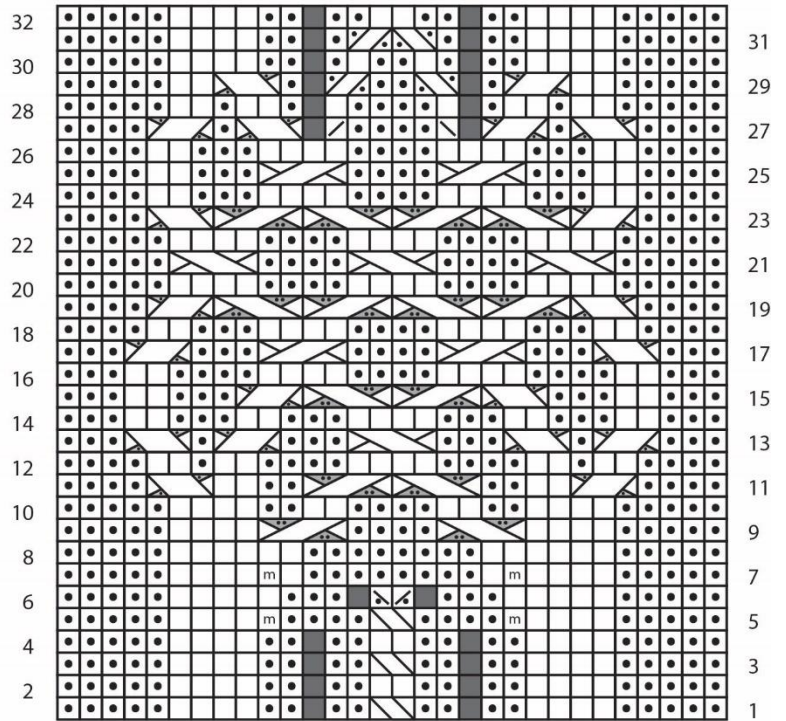
www.universalyarn.com

This pattern may not be reproduced for business, trade or sale.

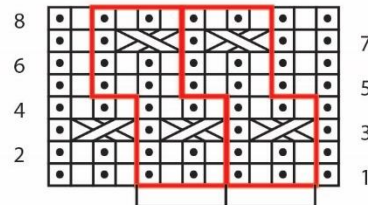
Key

-  knit on RS, purl on WS
-  purl on RS, knit on WS
-  no stitch
-  make 1 stitch
-  k2tog on WS
-  ssk on WS
-  k2tog on RS
-  ssk on RS
-  LT
-  1x1x1 RPC
-  1x1x1 LPC
-  2x1 RPC
-  2x1 LPC
-  2x2 RC
-  2x2 LC
-  2x2 RPC
-  2x2 LPC
-  pattern repeat

Chapel Cable

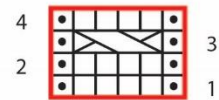


Lattice



2 reps shown

Cable Column



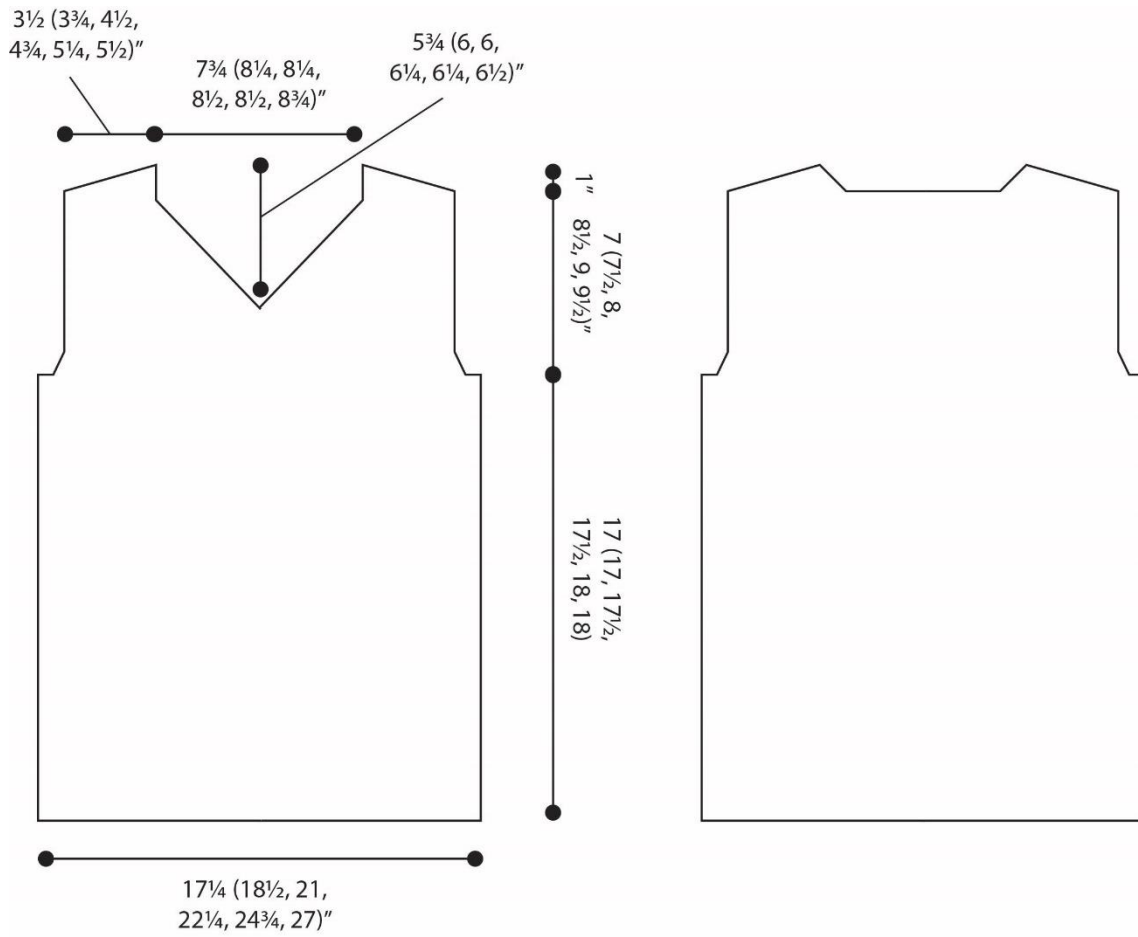
Knit. Relax. Smile. Repeat!

2019 © Universal Yarn, Inc.

All rights reserved.

www.universalyarn.com

This pattern may not be reproduced for business, trade or sale.



Knit. Relax. Smile. Repeat!

2019 © Universal Yarn, Inc.

All rights reserved.

www.universalyarn.com

This pattern may not be reproduced for business, trade or sale.