



PATTERN COLLECTION

Accessories



Ceres

Designed by Rachel Brockman

SKILL

Knitting

DIFFICULTY

Easy

SIZES

Extra Small (Small, Medium, Large, 1X, 2X, 3X, 4X, 5X)

Shown in Small size with approx. 10" of positive ease.

FINISHED MEASUREMENTS

Bust: 38 (42½, 45¾, 49½, 54, 58, 51¾, 64¾, 68½)"

Length: 20 (20½, 21, 22, 22½, 23, 24, 24½, 25)"

MATERIALS

[Universal Yarn Colorburst](#) (65% superwash merino, 35% acrylic; 200g/660 yds)

- 120 Lollipop – 2 (2, 2, 2, 2, 2, 2, 3, 3) balls

Needles: US Size 7 (4.5 mm) 32-40" circular or longer, and set of DPNs (or your preferred needle for knitting small circumferences) *or size needed to obtain gauge*

US Size 6 (4 mm) 16" circular and set of DPNs (or your preferred needle for knitting small circumferences)

Notions: Tapestry needle, stitch markers, stitch holders or waste yarn, spare circular needle for three-needle bind-off

Knit, Relax, Smile, Repeat!

2023 © Universal Yarn, Inc.

www.universalyarn.com

All rights reserved. This pattern may not be reproduced for business, trade or sale.

Questions? Contact patterns@universalyarn.com

GAUGE

21 sts x 27 rows/rnds = 4" in Stockinette stitch (St st) with larger ndl

21 sts x 36 rnds = 4" in Box Stitch with larger ndl

Save time, check your gauge.

PATTERN NOTES

Cozy and colorful, Ceres is the perfect pullover for rainy days and chilly nights. A touch of texture and rolled stockinette hem add just the right amount of interest without distracting from the gorgeous color runs of our self-shading Colorburst yarn.

The body of this sweater is knit seamlessly in the round from the bottom up. The front and back are separated at the underarms and worked flat, separately. The shoulders are joined with the three-needle bind-off. Stitches for the sleeves are picked up and knit in the round from the top down, though an option for seamed sleeves is also included. Stitches for the neckband are picked up and worked in the round.

Colorburst is a yarn featuring color shifts. To ensure your project looks as close to the sample as possible when breaking and rejoining yarn, be sure to visually match the color at the point in which you're rejoining yarn. This may require you to wind off yarn from the ball, but we promise the results are worth the effort.

STITCH GUIDE

Box Stitch

(multiple of 4 sts, worked in the rnd)

Rnds 1-2: * K1, p2, k1; rep from * to end.

Rnds 3-4: * P1, k2, p1; rep from * to end.

Rep Rnds 1-4 for patt.

K1, P1 Rib

(even number of sts, worked flat)

Row 1 (RS): * K1, p1; rep from * to end.

Row 2 (WS): * K1, p1; rep from * to end.

Rep Rows 1-2 for patt.

K1, P1 Rib

(even number of sts, worked in the rnd)

Rnd 1: * K1, p1; rep from * to end.

Rep Rnd 1 for patt.

PATTERN BEGINS

SWEATER

Body

With larger ndl, cast on 200 (224, 240, 260, 284, 304, 324, 340, 360) sts. PM and join to knit in the rnd, being careful not to twist.

Rnds 1-5: Knit.

Work Rnds 1-4 of Box Stitch, 14 (14, 14, 15, 15, 15, 16, 16, 16) times.

Work even in St st until piece meas approx. 14 (14, 14, 14½, 14½, 14½, 15, 15, 15)" from cast-on edge.

FRONT

Separation Row (RS): K100 (112, 120, 130, 142, 152, 162, 170, 180) Front sts, turn. Place rem 100 (112, 120, 130, 142, 152, 162, 170, 180) Back sts on holder or waste yarn.

Next Row (WS): Purl.

Next Row (RS): Knit.

Cont even in St st until piece meas approx. 4¼ (4¼, 5¼, 5¼, 6½, 6, 6, 6½, 7)" from Front/Back Separation, ending with a WS row.

Shape Front Neck

Row 1 (RS): K43 (49, 53, 57, 63, 68, 72, 76, 81)

Left Front sts, bind off center 14 (14, 14, 16, 16, 16,

18, 18, 18) sts, 43 (49, 53, 57, 63, 68, 72, 76, 81)

Right Front sts. Place Left Front sts on holder or waste yarn.

Right Front

Row 1 (WS): Purl.

Row 2 (RS): Bind off 4, knit to end – 39 (45, 49, 53, 59, 64, 68, 72, 77) sts rem.

Row 3: Purl.

Row 4: Bind off 3, knit to end – 36 (42, 46, 50, 56, 61, 65, 69, 74) sts rem.

Row 5: Purl.

Rows 6-9: Rep Rows 4-5, 2 times – 6 sts bound off, 30 (36, 40, 44, 50, 55, 59, 63, 68) sts rem.

Row 10: Bind off 2, knit to end – 28 (34, 38, 42, 48, 53, 57, 61, 66) sts rem.

Sizes Extra Small (Small, Medium) ONLY:

Cont even in St st, if necessary, until piece meas 6 (6½, 7)" from Front/Back Separation, ending with a RS row. Place sts on holder or waste yarn. Proceed to Left Front.

Sizes Large (1X, 2X) ONLY:

Row 11: Purl.

Row 12: Bind off 1, knit to end – 41 (47, 52) sts rem.

Cont even in St st, if necessary, until piece meas 7½ (8, 8½)" from Front/Back Separation, ending with a RS row. Place sts on holder or waste yarn. Proceed to Left Front.

Knit, Relax, Smile, Repeat!

2023 © Universal Yarn, Inc.

www.universalyarn.com

All rights reserved. This pattern may not be reproduced for business, trade or sale.

Questions? Contact patterns@universalyarn.com

Sizes 3X, 4X, 5X) ONLY:

Row 11: Purl.

Row 12: Bind off 1, knit to end – 56 (60, 65) sts rem.

Rows 13-14: Rep Rows 11-12 – 55 (59, 64) sts rem.
Cont even in St st, if necessary, until piece meas 9 (9½, 10)” from Front/Back Separation, ending with a RS row. Place sts on holder or waste yarn.
Proceed to Left Front.

Left Front

Return held Left Front sts to ndl, ready to work a WS row.

Row 1 (WS): Bind off 4, purl to end – 39 (45, 49, 53, 59, 64, 68, 72, 77) sts rem.

Row 2 (RS): Knit.

Row 3: Bind off 3, purl to end – 36 (42, 46, 50, 56, 61, 65, 69, 74) sts rem.

Row 4: Knit.

Row 5-8: Rep Rows 3-4, 2 times – 6 sts bound off, 30 (36, 40, 44, 50, 55, 59, 63, 68) sts rem.

Row 19: Bind off 2, purl to end – 28 (34, 38, 42, 48, 53, 57, 61, 66) sts rem.

Sizes Extra Small (Small, Medium) ONLY:

Cont even in St st, if necessary, until piece meas 6 (6½, 7)” from Front/Back Separation, ending with a RS row. Place sts on holder or waste yarn.
Proceed to Back.

Sizes Large (1X, 2X) ONLY:

Row 10: Knit.

Row 11: Bind off 1, purl to end – 41 (47, 52) sts rem.

Cont even in St st, if necessary, until piece meas 7½ (8, 8½)” from Front/Back Separation, ending with a RS row. Place sts on holder or waste yarn.
Proceed to Back.

Sizes 3X, 4X, 5X) ONLY:

Row 10: Knit.

Row 11: Bind off 1, purl to end – 56 (60, 65) sts rem. **Rows 14-15:** Rep Rows 12-13 – 55 (59, 64) sts rem.

Cont even in St st, if necessary, until piece meas 9 (9½, 10)” from Front/Back Separation, ending with a RS row. Place sts on holder or waste yarn.
Proceed to Back.

BACK

Return held Back sts to ndl, ready to work a RS row.

Row 1 (RS): Knit.

Row 2 (WS): Purl.

Work even in St st until piece meas 6 (6½, 7, 7½, 8, 8½, 9, 9½, 10)” from Front/Back Separation, ending with a WS row.

Next Row (RS): K28 (34, 38, 41, 47, 52, 55, 59, 64) Right Back sts, bind off center 44 (44, 44, 48, 48, 52, 52, 52) Neck sts, k28 (34, 38, 41, 47, 52, 55, 59, 64) Left Back sts.

Join Shoulders

Place held Left and Right Front sts onto spare circular ndl. With RS facing together, join Left Front and Left Back shoulder sts using the three-needle bind-off. Rep for Right Front and Right Back shoulder sts.

SLEEVES – Seamless Version ONLY

With larger ndl for knitting small circumferences, begin at the center of the underarm. Pick up and knit 62 (68, 72, 78, 82, 88, 94, 98, 104) sts. PM and join to knit in the rnd.

Work even in St st for approx. ¾”.

Shape Sleeve

Dec Rnd: K1, k2tog, knit to last 3 sts, ssk, k1 – 2 sts dec'd, 60 (66, 70, 76, 80, 86, 92, 96, 102) sts rem. Rep Dec Rnd every 8 (8, 6, 6, 6, 6, 4, 4, 4) rows, 6 (1, 12, 9, 5, 1, 19, 13, 10) more times, then rep Dec Rnd every 6 (6, 4, 4, 4, 4, 2, 2, 2) rnds, 7 (13, 4, 8, 14, 19, 4, 11, 17) times – 26 (28, 32, 34, 38, 40, 46, 48, 54) sts dec'd, 34 (38, 38, 42, 42, 46, 46, 48, 48) sts rem.

Work even in St st until Sleeve meas approx. 15½ (15, 15, 14½, 14½, 14, 14, 12½, 12½)” from underarm.

Cuff

Change to smaller ndl for knitting small circumferences.

Work in K1, P1 Rib until Sleeve meas approx. 19½ (19, 19, 18½, 18½, 18, 18, 16½, 16½)” from underarm.
Bind off all sts in patt.

SLEEVES – Flat Version ONLY

With larger ndl, begin at the center of the underarm. Pick up and knit 64 (70, 74, 80, 84, 90, 96, 100, 106) sts. Turn, do not join to knit in the rnd.

Set-up Row (WS): Purl.

Row 1 (RS): Knit.

Row 2 (WS): Purl.

Cont even in St st until piece meas approx. ¾” from underarm, ending with a WS row.

Shape Sleeve

Dec Row (RS): K2, k2tog, knit to last 4 sts, ssk, k2 – 2 sts dec'd, 62 (68, 72, 78, 82, 88, 94, 98, 104) sts rem.

Knit, Relax, Smile, Repeat!

2023 © Universal Yarn, Inc.

www.universalyarn.com

All rights reserved. This pattern may not be reproduced for business, trade or sale.

Questions? Contact patterns@universalyarn.com

Rep Dec Rnd every 8 (8, 6, 6, 6, 6, 4, 4, 4) rows, 6 (1, 12, 9, 5, 1, 19, 13, 10) more times, then rep Dec Rnd every 6 (6, 4, 4, 4, 4, 2, 2, 2) rnds, 7 (13, 4, 8, 14, 19, 4, 11, 17) times - 26 (28, 32, 34, 38, 40, 46, 48, 54) sts dec'd, 36 (40, 40, 44, 44, 48, 48, 50, 50) sts rem.

Work even in St st until Sleeve meas approx. 15½ (15, 15, 14½, 14½, 14, 14, 12½, 12½)" from underarm.

Cuff

Change to smaller ndl.

Work in K1, P1 Rib until Sleeve meas approx. 19½ (19, 19, 18½, 18½, 18, 18, 16½, 16½)" from underarm.

Bind off all sts in patt.

FINISHING

Gently wash and block to finished measurements. Weave in ends. If you chose seamed Sleeves, sew Sleeve seams using mattress stitch.

Neckband

With RS facing, smaller 16" circ ndl, and beg at right shoulder, pick up and knit 44 (44, 44, 48, 48, 48, 52, 52, 52) sts along Back neck edge and 50 (50, 50, 56, 56, 56, 64, 64, 64) sts along Front neck edge - 94 (94, 94, 104, 104, 104, 116, 116) sts.

Work in K1, P1 Rib until Neckband meas approx. 6½" from picked-up edge. Bind off all sts in patt.

Block Neckband, if desired. Weave in rem ends.

Abbreviations

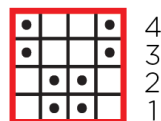
approx	approximately
bef	before
beg	begin(ning)
circ	circular
cont	continue
dec('d)	decrease(d)
dpn(s)	double pointed needle(s)
est'd	established
k	knit
m	marker
meas	measures
ndl	needle
p	purl
patt	pattern
pm	place marker
rem	remain(ing)
rep	repeat
rnd	round
RS	right side
ssk	slip next 2 sts individually knitwise, slip them back to left needle in this position, knit them together through the back loops (1 st dec'd)

St st

st(s)
WS

Stockinette stitch (knit on RS rows, purl on WS rows; in the rnd, knit every rnd)
stitch(es)
wrong side

Box Stitch



Key

- pattern repeat
- knit
- purl

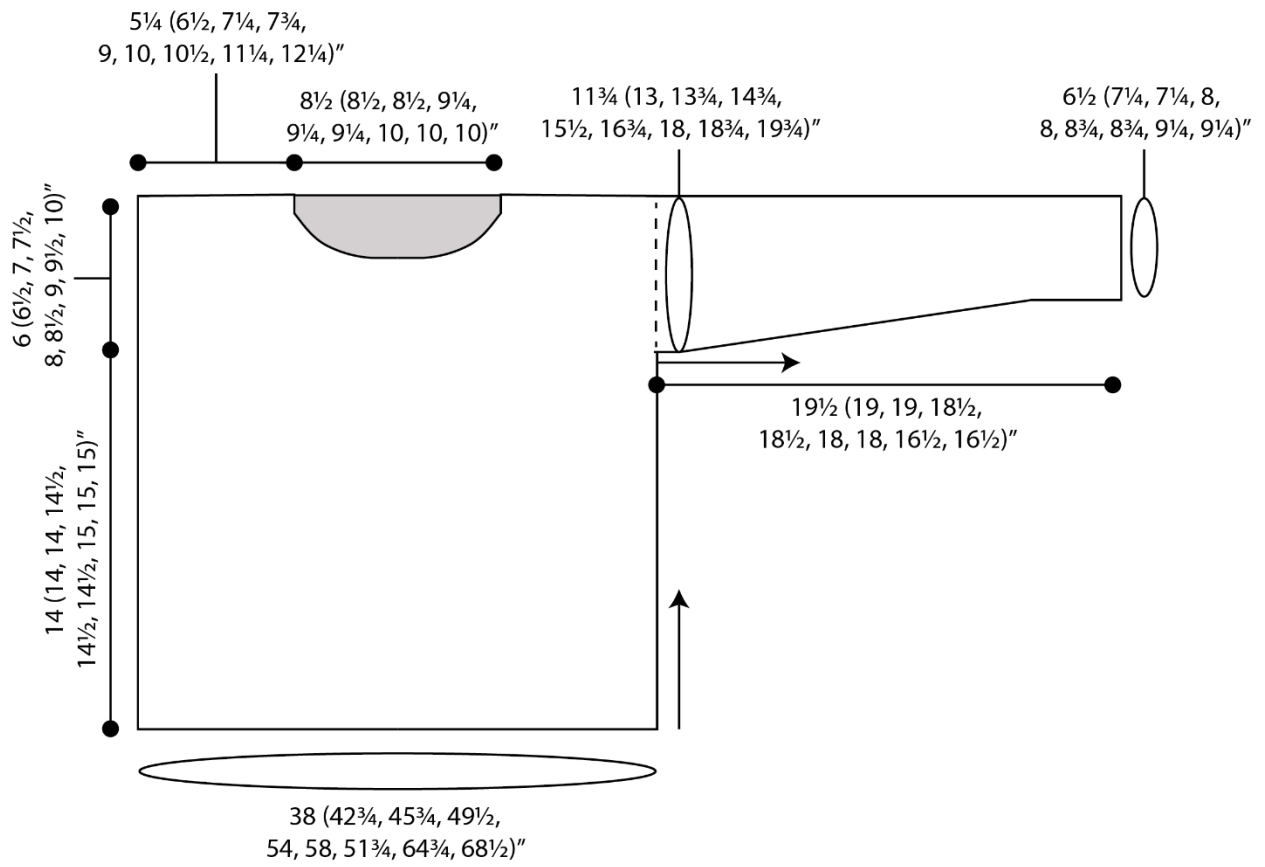
Knit, Relax, Smile, Repeat!

2023 © Universal Yarn, Inc.

www.universalyarn.com

All rights reserved. This pattern may not be reproduced for business, trade or sale.

Questions? Contact patterns@universalyarn.com



Knit, Relax, Smile, Repeat!

2023 © Universal Yarn, Inc.

www.universalyarn.com

All rights reserved. This pattern may not be reproduced for business, trade or sale.

Questions? Contact patterns@universalyarn.com