



PATTERN COLLECTION

Accessories



Cascade Hat

Designed by Rachel Brockman

DIFFICULTY

Easy

SIZES

Adult Small (Medium, Large)

Shown in Adult Large size.

FINISHED MEASUREMENTS

Brim Circumference: 17½ (20, 22)''

Height: 8½ (8¾, 8¾,)''

MATERIALS

Universal Yarn *Truva* (50% cotton, 50% cashmere; 50g/164 yds)

- 102 Stormcloud - 1 ball (all sizes)

Needles: US Size 7 (4.5 mm) 16'' circular and set of DPNs (or your preferred needle for knitting small circumferences) *or size needed to obtain gauge*

US Size 5 (3.75 mm) 16'' circular

Notions: Tapestry needle, stitch markers, cable needle (cn)

GAUGE

19 sts x 26 rnds = 4'' in Lace patt with larger ndl

Save time, check your gauge.

Knit, Relax, Smile, Repeat!

2021 © Universal Yarn, Inc.

www.universalyarn.com

All rights reserved. This pattern may not be reproduced for business, trade or sale.

Questions? Contact patterns@universalyarn.com

PATTERN NOTES

A statement hat is the perfect addition to any outfit: showing off your personality while also pulling the entire look together. Knit using cotton and cashmere blend yarn, Truva, the Cascade Hat features a beautiful lace pattern worked throughout. It plays up the stunning qualities of this yarn, enhancing the subtly marled colors and soft texture. The Cascade Hat is a luxurious little accessory you'll treasure making and wearing. This hat is knit in the round from the bottom up.

STITCH GUIDE

Right Twist (RT): K2tog but do not slip st from ndl, knit the first st again, slip both sts from ndl.

Left Twist (LT): Knit the second st on the left ndl through the back loop, knit the first st through the front loop, slip both sts from ndl.

1x2 Left Cross (LC): Sl 1 st to cn and hold in front, k2 from left needle, k1 from cn.

1x2 Right Cross (RC): Sl 2 sts to cn and hold in back, k1 from left needle, k2 from cn.

Rib Pattern – Adult Small (Large) Sizes ONLY

(multiple of 21 sts)

Rnd 1: * P1, [k1, p3] 4 times, k2, p2; rep from * to end.

Rep Rnd 1 for patt.

Rib Pattern – Adult Medium Size ONLY

(multiple of 19 sts)

Rnd 1: * P1, k1, [p3, k1] 3 times, p2, k2, p1; rep from * to end.

Rep Rnd 1 for patt.

Lace Pattern – Adult Small (Large) Sizes ONLY

(multiple of 21 sts)

Set-up Rnd: * P1, k13, p1, k6; rep from * to end.

Rnd 1: * P1, k3, k2tog, yo, k3, yo, ssk, k3, p1, 1x2 RC, 1x2 LC; rep from * to end.

Rnd 2: * P1, k13, p1, k6; rep from * to end.

Rnd 3: * P1, k2, k2tog, yo, k5, yo, ssk, k2, p1, k6.

Rnd 4: Rep Rnd 2.

Rnd 5: * P1, k1, k2tog, yo, k2, p3, k2, yo, ssk, k1, p1, 1x2 RC, 1x2 LC; rep from * to end.

Rnd 6: * P1, k5, p3, k5, p1, k6; rep from * to end.

Rnd 7: * P1, k2tog, yo, k3, p3, k3, yo, ssk, p1, k6; rep from * to end.

Rnd 8: Rep Rnd 6.

Rep Rnds 1-8 for patt.

Lace Pattern – Adult Medium Size ONLY

(multiple of 19 sts)

Set-up Rnd: * P1, k13, p1, k4; rep from * to end.

Rnd 1: * P1, k3, k2tog, yo, k3, yo, ssk, k3, p1, RT, LT; rep from * to end.

Rnd 2: * P1, k13, p1, k4; rep from * to end.

Rnd 3: * P1, k2, k2tog, yo, k5, yo, ssk, k2, p1, k4.

Rnd 4: Rep Rnd 2.

Rnd 5: * P1, k1, k2tog, yo, k2, p3, k2, yo, ssk, k1, p1, RT, LT; rep from * to end.

Rnd 6: * P1, k5, p3, k5, p1, k4; rep from * to end.

Rnd 7: * P1, k2tog, yo, k3, p3, k3, yo, ssk, p1, k4; rep from * to end.

Rnd 8: Rep Rnd 6.

Rep Rnds 1-8 for patt.

PATTERN BEGINS

HAT

Brim

Note: Take care to ensure you are working the correct chart for your size.

With color A, smaller ndl, and using the German Twisted Cast-on method, cast on 84 (95, 105) sts. PM and join to knit in the rnd, being careful not to twist.

Rnd 1: Work in Rib Patt to end – patt will be repeated 4 (5, 5) times across each rnd.

Rep Rnd 1, 7 (9, 9) more times. Change to larger ndl.

Main Hat

Note 1: Lace Pattern is also fully charted. Lace Pattern will be repeated 4 (5, 5) times across each round. We recommend placing stitch markers between each pattern repeat to help you stay on track.

Note 2: Take care to ensure you are working the correct chart for your size.

Work Rows 1-8 of Lace Pattern, 4 total times.

Crown Shaping – Adult Small (Large) Sizes ONLY

Note 1: Crown Shaping is also fully charted. When there are too few stitches to fit comfortably on circular needle, change to DPNs or your preferred needle for knitting small circumferences.

Note 2: Take care to ensure you are working the correct chart for your size.

Rnd 1: * P1, k3, k3tog, yo, k1, yo, sssk, k3, p1, 1x2 RC, 1x2 LC; rep from * to end – 8 (10) sts dec'd, 76 (95) sts rem.

Rnd 2: * P1, k11, p1, k6.

Knit, Relax, Smile, Repeat!

2021 © Universal Yarn, Inc.

www.universalyarn.com

All rights reserved. This pattern may not be reproduced for business, trade or sale.

Questions? Contact patterns@universalyarn.com

Rnd 3: P1, k2, k3tog, yo, k1, yo, sssk, k2, p1, k6; rep from * to end – 8 (10) sts dec'd, 68 (85) sts rem.

Rnd 4: * P1, k9, p1, k6; rep from * to end.

Rnd 5: * P1, k1, k3tog, yo, p1, yo, sssk, k1, p1, 1x2 RC, 1x2 LC; rep from * to end – 8 (10) sts dec'd, (60) 75 sts rem.

Rnd 6: * [P1, k3] 2 times, p1, k6.

Rnd 7: * P1, k3tog, yo, p1, yo, sssk, p1, k6 – 8 (10) sts dec'd, 52 (65) sts rem.

Rnd 8: * [P1, k2] 2 times, p1, k6; rep from * to end.

Rnd 9: * P1, k1, S2KP2, k1, p1, 1x2 RC, 1x2 LC; rep from * to end – 8 (10) sts dec'd, 44 (55) sts rem.

Rnd 10: * P1, k3, p1, k6; rep from * to end.

Rnd 11: * P1, S2KP2, p1, k6; rep from * to end – 8 (10) sts dec'd, 36 (45) sts rem.

Rnd 12: * P1, k1, p1, k6; rep from * to end.

Rnd 13: * S2KP2, ssk, k2, k2tog – 16 (20) sts dec'd, 20 (25) sts rem.

Rnd 14: * K1, ssk, k2tog; rep from * to end – 8 (10) sts dec'd, 12 (15) sts rem.

Rnd 15: * K1, ssk; rep from * to end – 4 (5) sts dec'd, 8 (10) sts rem.

Crown Shaping – Adult Medium ONLY

Note 1: Crown Shaping is also fully charted. When there are too few stitches to fit comfortably on circular needle, change to DPNs or your preferred needle for knitting small circumferences.

Note 2: Take care to ensure you are working the correct chart for your size.

Rnd 1: * P1, k3, k3tog, yo, k1, yo, sssk, k3, p1, RT, LT; rep from * to end – 10 sts dec'd, 85 sts rem.

Rnd 2: * P1, k11, p1, k4; rep from * to end.

Rnd 3: * P1, k2, k3tog, yo, k1, yo, sssk, k2, p1, k4; rep from * to end – 10 sts dec'd, 75 sts rem.

Rnd 4: * P1, k9, p1, k4; rep from * to end.

Rnd 5: * P1, k1, k3tog, yo, p1, yo, sssk, k1, p1, RT, LT; rep from * to end – 10 sts dec'd, 65 sts rem.

Rnd 6: * [P1, k3] 2 times, p1, k4; rep from * to end.

Rnd 7: * P1, k3tog, yo, p1, yo, sssk, p1, k4; rep from * to end – 10 sts dec'd, 55 sts rem.

Rnd 8: * [P1, k2] 2 times, p1, k4; rep from * to end.

Rnd 9: * P1, k1, S2KP2, k1, p1, RT, LT; rep from * to end – 10 sts dec'd, 45 sts rem.

Rnd 10: * P1, k3, p1, k4; rep from * to end.

Rnd 11: * P1, S2KP2, p1, k4; rep from * to end – 10 sts dec'd, 35 sts rem.

Rnd 12: * P1, k1, p1, k4; rep from * to end.

Rnd 13: * S2KP2, ssk, k2tog; rep from * to end – 20 sts dec'd, 15 sts rem.

Rnd 14: * K1, ssk; rep from * to end – 5 sts dec'd, 10 sts rem.

All Sizes

8 (10, 10) sts rem.

Break yarn leaving approx. 8" tail. Thread tail through rem live sts and pull taut to close.

FINISHING

Gently wash and block to finished measurements.

Abbreviations

cn	cable needle
dec('d)	decrease(d)
dpn(s)	double pointed needle(s)
k	knit
k2tog	knit 2 stitches together (1 st dec'd)
k3tog	knit 3 stitches together (2 sts dec'd)
LC	left cross
p	purl
pm	place marker
rem	remain(ing)
rep	repeat
rnd	round
RC	right cross
S2KP2	slip 2 stitches as if to knit 2 together, knit 1, pass 2 slipped stitches over knit stitch; centered double decreases
ssk	slip next 2 sts individually knitwise, slip them back to left needle in this position, knit them together through the back loops (1 st dec'd)
sssk	slip next 3 sts individually knitwise, slip them back to left needle in this position, knit them together through the back loops (2 sts dec'd)
st(s)	stitch(es)
yo	yarn over

Knit, Relax, Smile, Repeat!

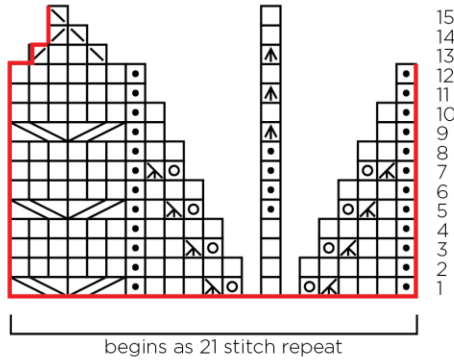
2021 © Universal Yarn, Inc.

www.universalyarn.com

All rights reserved. This pattern may not be reproduced for business, trade or sale.

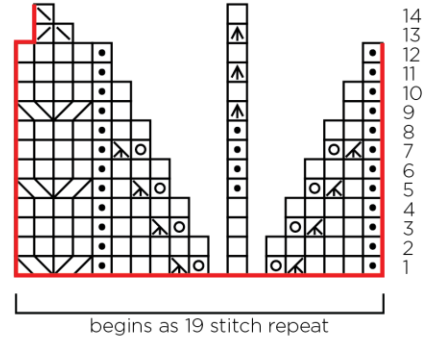
Questions? Contact patterns@universalyarn.com

Crown Shaping
Adult Small (Large) Only



begins as 21 stitch repeat

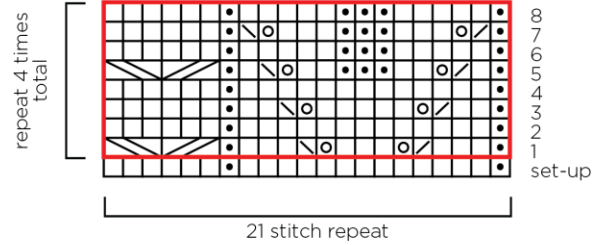
Crown Shaping
Adult Medium Only



begins as 19 stitch repeat

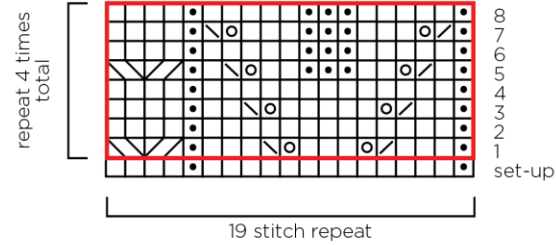
- Key
- pattern repeat
 - knit
 - purl
 - / k2tog
 - \ ssk
 - o yo
 - ^ k3tog
 - ^ sssk
 - ^ S2KP2
 - / 1x2 RC
 - \ 1x2 LC
 - / RT
 - \ LT

Lace Pattern
Adult Small (Large) Only



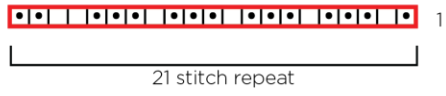
21 stitch repeat

Lace Pattern
Adult Medium Only



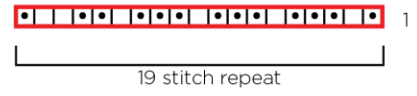
19 stitch repeat

Rib
Adult Small (Large) Only



21 stitch repeat

Rib
Adult Medium Only



19 stitch repeat

Knit, Relax, Smile, Repeat!

2021 © Universal Yarn, Inc.
www.universalyarn.com

All rights reserved. This pattern may not be reproduced for business, trade or sale.
Questions? Contact patterns@universalyarn.com