



## PATTERN COLLECTION

### Home



#### Carseat Blankie

Designed by Aubrey Busek

#### DIFFICULTY

Easy

#### SIZES

One Size

#### FINISHED MEASUREMENTS

Length: 25½"

Width: 21½"

#### MATERIALS

Fibra Natura Cotton True Sport (100% Pima Cotton; 50g/197 yds)

- 111 Violet - 3 balls

**Needle:** US Size 4 (3.5 mm) straight or your preferred ndl for knitting flat *or size needed to obtain gauge*

**Notions:** Tapestry needle, stitch markers

**GAUGE:** 22 sts x 34 rows = 4" in Basketweave patt

Save time, check your gauge.

Knit, Relax, Smile, Repeat!

2021 © Universal Yarn, Inc.

[www.universalyarn.com](http://www.universalyarn.com)

All rights reserved. This pattern may not be reproduced for business, trade or sale.

Questions? Contact [patterns@universalyarn.com](mailto:patterns@universalyarn.com)

## PATTERN NOTES

Going on a trip? How about just to the grocery store? A handmade blanket can make any car ride more pleasant, especially when knit in a yarn like Cotton True Sport. Soft, breathable pima cotton is perfect for tiny hands. The Carseat Blankie is perfectly sized to fit in a car seat. It has a textural basketweave stitch pattern that is easy to work, and sure to result in lots of family picnic planning fun!

This blanket is worked flat from the bottom up. We recommend using stitch markers between pattern repeats to help you stay on track.

## STITCH GUIDE

### Basketweave

*(multiple of 20 sts, plus 17)*

**Row 1 (RS):** K1, \*{k5, [p1, k1] 2 times, p1} 2 times; rep from \* to last 16 sts, k5, [p1, k1] 2 times, p1, k6.

**Row 2 (WS):** P7, [k1, p1] 2 times, p5, \* {[p1, k1] 2 times, p1, p5} 2 times; rep from \* to last st, p1.

**Row 3:** Rep Row 1.

**Row 4:** Rep Row 2.

**Row 5:** Rep Row 1.

**Row 6:** K11, p5, \* k15, p5; rep from \* to last st, p1.

**Row 7:** K1, \* k5, p15; rep from \* to last 16 sts, k5, p11.

**Row 8:** Rep Row 6.

**Row 9:** Rep Row 7.

**Row 10:** Rep Row 6.

**Rows 11-15:** Rep Rows 1-5.

**Row 16:** P6, k10, \* k5, p5, k10; rep from \* to last st, k1.

**Row 17:** P1, \* p10, k5, p5; rep from \* to last 16 sts, p10, k6.

**Row 18:** Rep Row 16.

**Row 19:** Rep Row 17.

**Row 20:** Rep Row 16.

Rep Rows 1-20 for patt.

## BLANKET

Cast on 125 sts.

### Lower Border

Work 4 rows in Garter St.

### Main Blanket

**Row 1 (RS):** K4, pm, work Row 1 of Basketweave to last 4 sts, pm, k4. Patt will be repeated 5 times across each row.

**Row 2 (WS):** K4, sl m, work Row 2 of Basketweave to m, sl m, k4.

Cont as est'd through Row 20 of Basketweave patt, then rep Rows 1-20 until piece meas approx 25" from cast-on edge, ending with Row 4 of patt.

### Upper Edge

Work 4 rows in Garter st.

Bind off all sts.

## FINISHING

Gently wash and block to finished measurements. Weave in ends.

## Abbreviations

<b>approx</b>	approximately
<b>cont</b>	continue
<b>est'd</b>	established
<b>garter st</b>	knit every row
<b>k</b>	knit
<b>m</b>	marker
<b>meas</b>	measures
<b>p</b>	purl
<b>patt</b>	pattern
<b>pm</b>	place marker
<b>RS</b>	right side
<b>rep</b>	repeat
<b>st(s)</b>	stitch(es)
<b>WS</b>	wrong side



Knit, Relax, Smile, Repeat!

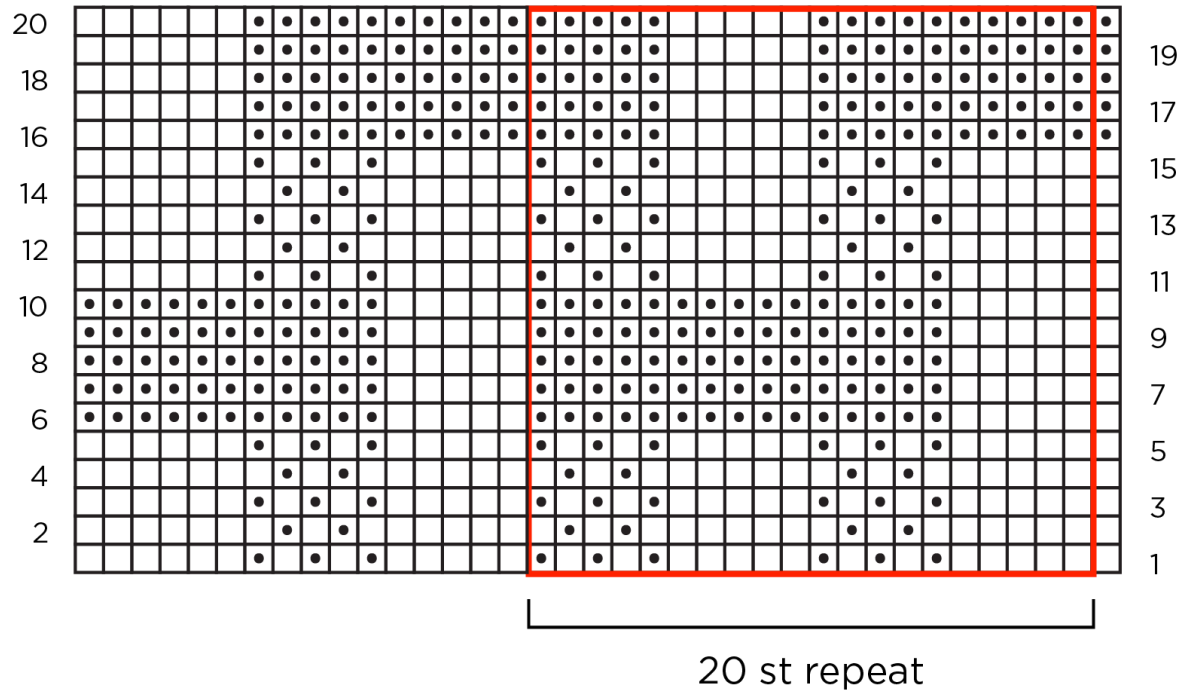
2021 © Universal Yarn, Inc.

[www.universalyarn.com](http://www.universalyarn.com)

All rights reserved. This pattern may not be reproduced for business, trade or sale.

Questions? Contact [patterns@universalyarn.com](mailto:patterns@universalyarn.com)

# Basketweave



## Key

- pattern repeat
- knit on RS, purl on WS
- purl on RS, knit on WS

Knit, Relax, Smile, Repeat!

2021 © Universal Yarn, Inc.

[www.universalyarn.com](http://www.universalyarn.com)

All rights reserved. This pattern may not be reproduced for business, trade or sale.

Questions? Contact [patterns@universalyarn.com](mailto:patterns@universalyarn.com)