



Pattern Collection: Accessories



Carolina Holly

Designed by Rachel Brockman

SIZES

Adult Medium

FINISHED MEASUREMENTS

Circumference: 18¼"

Stretches to 23"

Height: 8½"

MATERIALS

Universal Yarn *Deluxe Worsted* (100% wool; 100g/220 yds)

- 12183 City Turf (MC) – 1 skein
- 13104 Slate (CC1) – 1 skein
- 91475 Sangria (CC2) – 1 skein

Needles: US Size 7 (4.5 mm) 16" circular, set of dpns *or size needed to obtain gauge*

US Size 5 (3.75 mm) 16" circular

Notions: Tapestry needle, stitch markers, one 3½" pom pom maker

GAUGE

22 sts x 26 rows = 4" in Holly patt

Save time, check your gauge.

Knit. Relax. Smile. Repeat!

2018 © Universal Yarn, Inc.

All rights reserved.

www.universalyarn.com

This pattern may not be reproduced for business, trade or sale.

PATTERN NOTES

Complete with mini red bobbles and an original twist-stitch holly leaf motif, this hat is guaranteed to make your holiday extra jolly. The Carolina Holly hat is worked in the round from the bottom up. It has a double-thick brim created by knitting the live stitches together with the cast-on edge. The body of the hat features small bobbles and twisted stitches to create a holly leaf motif.

Visit our blog to find a special tutorial on creating the two-color pom-pom.

STITCH GUIDE

Make Bobble (mb): [K1, yo, k1] into next st, turn, p3, turn, k3tog.

Right Twist (RT): K2tog but do not slip st from ndl, knit the first st again, slip both sts from ndl.

Left Twist (LT): Knit the second st on the left ndl through the back loop, knit the first st through the front loop, slip both sts from ndl.

Right Purl Twist (RPT): K2tog but do not slip st from ndl, purl the first st again, slip both sts from ndl.

Left Purl Twist (LPT): Purl the second st on the left ndl through the back loop, knit the first st through the front loop, slip both sts from ndl.

K3, P2 Rib

(multiple of 5 sts)

Rnd 1: * K3, p2; rep from * to end.

Rep Rnd 1 for patt.

Holly

(begins with multiple of 20 sts)

Rnd 1: With CC1, knit. Break CC1.

Rnd 2: With MC, knit.

Rnd 3: * With MC p1, k1, p3, [CC2 k1, MC p5] 2 times, CC2 k1, MC p2; rep from * to end.

Rnd 4: * With MC p1, k1, p2, [CC2 k1, mb, k1, MC p3] 2 times, CC2 k1, mb, k1, MC p1; rep from * to end. Break CC2. Cont with MC only.

Rnd 5: * P1, k1, p2, [m1p, sl 2-k1-p2sso, m1p, p3] 2 times, m1p, sl 2-k1-p2sso, m1p, p1; rep from * to end

Rnd 6: * P1, k1, p7, RT, p1, LT, p6; rep from * to end.

Rnd 7: * P1, k1, p6, RT, k1, p1, k1, LT, p5; rep from * to end.

Rnd 8: * P1, k1, p5, RT, k2, p1, k2, LT, p4; rep from * to end.

Rnd 9: * P1, k1, p4, RT, k3, p1, k3, LT, p3; rep from * to end.

Rnd 10: * P1, k1, p4, k5, p1, k5, p3; rep from * to end.

Rnd 11: * P1, k1, p3, RT, k3, p3, k3, LT, p2; rep from * to end.

Rnd 12: * P1, k1, p3, k4, [p1, k1] 2 times, p1, k4, p2; rep from * to end.

Rnd 13: * P1, k1, p2, RT, [k2, p1] 3 times, k2, LT, p1; rep from * to end.

Rnd 14: * P1, k1, p2, [k3, p1] 4 times; rep from * to end.

Rnd 15: * P1, k1, p1, RT, k1, [p1, k4] 2 times, p1, k1, LT; rep from * to end.

Rnd 16: * P1, k1, p1, LPT, k6, p1, k6, RPT; rep from * to end.

Rnd 17: * P1, k1, p2, LPT, k5, p1, k5, RPT, p1; rep from * to end.

Rnd 18: * P1, k1, p3, LPT, k4, p1, k4, RPT, p2; rep from * to end.

Rnd 19: P1, k1, p4, LPT, k2, p3, k2, RPT, p3; rep from * to end.

Rnd 20: * P1, k1, p4, RT, [k1, p1] 3 times, k1, LT, p3; rep from * to end.

Rnd 21: * P1, k1, p3, RT, k1, p1, k2, p1, k2, p1, k1, LT, p2; rep from * to end.

Rnds 22-23: Rep Rnds 18-19.

Rnd 24: * P1, k1, p5, LPT, k2, p1, k2, RPT, p4; rep from * to end.

Rnd 25: * P1, k1, p6, LPT, k1, p1, k1, RPT, p5; rep from * to end.

Rnd 26: * P1, k1, p7, LPT, p1, RPT, p6; rep from * to end.

Crown Shaping

Rnd 27: * P1, k1, p8, sl 2-k1-p2sso, p7; rep from * to end – 2 sts dec'd, 18 sts rem each rep.

Rnd 28: * P1, k1, p16; rep from * to end.

Rnd 29: * P1, k1, p6, ssp, p1, p2tog, p5; rep from * to end – 2 sts dec'd, 16 sts rem each rep.

Rnd 30: * P1, k1, p14; rep from * to end.

Rnd 31: * P1, k1, p5, ssp, p1, p2tog, p4; rep from * to end – 2 sts dec'd, 14 sts rem each rep.

Rnd 32: * P1, k1, p12; rep from * to end.

Knit. Relax. Smile. Repeat!

2018 © Universal Yarn, Inc.

All rights reserved.

www.universalyarn.com

This pattern may not be reproduced for business, trade or sale.

Rnd 33: P1, k1, p4, ssp, p1, p2tog, p3; rep from * to end – 2 sts dec'd, 12 sts rem each rep.

Rnd 34: * P1, k1, p10; rep from * to end.

Rnd 35: * P1, k1, p3, ssp, p1, p2tog, p2; rep from * to end – 2 sts dec'd, 10 sts rem each rep.

Rnd 36: * P1, k1, p8; rep from * to end.

Rnd 37: * P1, k1, p2, ssp, p1, p2tog, p1; rep from * to end – 2 sts dec'd, 8 sts rem each rep.

Rnd 38: * P1, k1, p1, ssp, p1, p2tog; rep from * to end – 2 sts dec'd, 6 sts rem each rep.

Rnd 39: * P1, k1, ssp, p2tog; rep from * to end – 2 sts dec'd, 4 sts rem each rep.

Rnd 40: * K2tog, p2tog; rep from * to end – 2 sts dec'd, 2 sts rem each rep.

HAT

Brim

With CC1 and smaller ndl, cast on 100 sts. PM and join to work in the rnd, being careful not to twist. Work in K3, P2 Rib until piece meas 4½" from cast-on edge. Fold up the cast on edge and knit together with working row one stitch at a time. *Note: RS will be facing tog, resulting in k2, p3 rib on the public side after joining. Working sts on ndl will be in back, while cast-on edge will be in front during joining.*

Main Hat

Note 1: Holly patt is also charted for your convenience. You may wish to place stitch markers between each repeat to help stay on track.

Note 2: When there are too few sts to fit comfortably onto 16" circ ndl, change to dpns. Switch to larger ndl. Work Rnds 1-40 of Holly patt. Patt will be repeated 5 times across each rnd. After all rnds are complete, 10 sts rem. Break yarn leaving 8" tail. Pass tail through rem live sts, pull taut, fasten off.

FINISHING

Weave in ends. Block to finished measurements
With CC2, make a 3½" pom pom.

With CC1, cut 15 12" lengths of yarn.

Working with one strand at a time, fold the yarn in half and thread through tapestry ndl. Insert into pom pom, holding one end of the strand securely and pushing tapestry ndl through the

opposite side. Repeat 14 more times, distributing strands of CC1 evenly around pom pom. Trim neatly to finish.

Abbreviations

CC	contrast color
circ	circular
cont	continue
dec('d)	decrease(d)
dpn(s)	double pointed needle(s)
k	knit
k2tog	knit 2 stitches together (1 st dec'd)
k3tog	knit 3 stitches together (2 sts dec'd)
m1P	insert left needle from back to front under horizontal strand of yarn lying between st just worked and next st, purl this st through the front loop (1 st inc'd)
MC	main color
meas	measures
ndl	needle
p	purl
p2tog	purl 2 sts together (1 st dec'd)
patt	pattern
pm	place marker
psso	pass slipped stitch(es) over
rem	remain(ing)
rep	repeat
rnd	round
RS	right side
sl	slip
ssp	slip next 2 sts individually knitwise, slip them back to left needle in this position, purl them together through the back loops (1 st dec'd)
st(s)	stitch(es)
tog	together
yo	yarn over

Knit. Relax. Smile. Repeat!

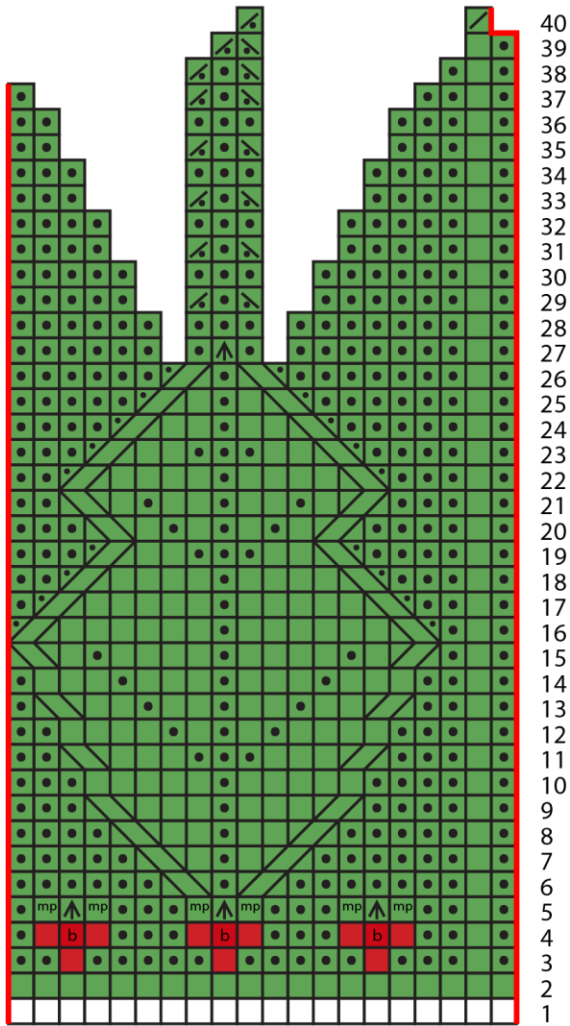
2018 © Universal Yarn, Inc.

All rights reserved.

www.universalyarn.com

This pattern may not be reproduced for business, trade or sale.

Holly



Key

- pattern repeat
- with CC1, knit
- with CC2, knit
- b with CC2, mb
- with MC, knit
- a with MC, purl
- mp with MC, m1p
- ▲ with MC, sl 2-k1-p2sso
- with MC, p2tog
- with MC, ssp
- with MC, k2tog
- with MC, RT
- with MC, LT
- with MC, RPT
- with MC, LPT

K3, P2 Rib



Knit. Relax. Smile. Repeat!

2018 © Universal Yarn, Inc.

All rights reserved.

www.universalyarn.com

This pattern may not be reproduced for business, trade or sale.