



## Pattern Collection: Accessories



### **Cancer Comfort Cap**

Designed by Universal Yarn Design Team

#### **SIZES**

Adult Small (Medium, Large)

#### **FINISHED MEASUREMENTS**

**Head Circumference:** 18¾ (20, 21¼)"

**Length:** 6¾"

#### **MATERIALS**

**Universal Yarn Cotton Supreme DK**  
(100% cotton; 100g/230 yds)

- 705 Pink – 1 skein

**Needles:** US Size 4 (3.5 mm) 16" circular,  
set of dpns *or size needed to obtain gauge*

US Size 3 (3.25 mm) 16" circular

**Notions:** Tapestry needle, 8 stitch markers

#### **GAUGE**

24 sts x 32 rows = 4" in rev St st

**Save time, check your gauge.**

*Knit. Relax. Smile. Repeat!*

2017 © Universal Yarn, Inc.

All rights reserved.

[www.universalyarn.com](http://www.universalyarn.com)

This pattern may not be reproduced for business, trade or sale.

## PATTERN NOTES

This hat was designed for a dear friend of our sales director who is about to undergo chemotherapy for breast cancer treatment

It is knit in the round from the bottom up. During Crown Shaping, when there are too few stitches to fit on the circular, switch to double pointed.

## STITCH GUIDE

**2X1 Right Purl Cross (RPC):** Sl next st to cn and hold in back, k2 from left ndl, p1 from cn.

**2x1 Left Purl Cross (LPC):** Sl next 2 sts to cn and hold in front, p1 from left ndl, k2 from cn.

**2x2 Left Cross (LC):** Sl next 2 sts to cn and hold in front, k2 from left ndl, k2 from cn.

## HAT

With smaller ndl, cast on 112 (120, 128) sts. Pm and join to work in the rnd, being careful not to twist sts. [Purl 1 rnd, knit 1 rnd] 3 times. Switch to larger ndl. Purl 1 rnd.

**Next rnd:** P14 (15, 16), pm; rep from \* to end – 8 markers, including beginning of rnd marker.

## Begin Ribbons

**Rnds 1-2:** \* P1 (2, 2), k2, p8, k2, p1 (1, 2); rep from \* to end.

**Rnd 3:** \* P1 (2, 2), 2x1 LPC, p6, 2x1 RPC, p1 (1, 2); rep from \* to end.

**Rnd 4:** \* P2 (3, 3), k2, p6, k2, p2 (2, 3); rep from \* to end.

**Rnd 5:** \* P2 (3, 3), 2x1 LPC, p4, 2x1 RPC, p2 (2, 3); rep from \* to end.

**Rnd 6:** \* P3 (4, 4), k2, p4, k2, p3 (3, 4); rep from \* to end.

**Rnd 7:** \* P3 (4, 4), 2x1 LPC, p2, 2x1 RPC, p3 (3, 4); rep from \* to end.

**Rnd 8:** \* P4 (5, 5), k2, p2, k2, p4 (4, 5); rep from \* to end.

**Rnd 9:** \* P4 (5, 5), 2x1 LPC, 2x1 RPC, p4 (4, 5); rep from \* to end.

**Rnd 10:** \* P5 (6, 6), k4, p5 (5, 6); rep from \* to end.

**Rnd 11:** \* P5 (6, 6), 2x2 LC, p5 (5, 6); rep from \* to end.

**Rnd 12:** Rep Rnd 10.

**Rnd 13:** \* P4 (5, 5), 2x1 RPC, 2x1 LPC, p4 (4, 5); rep from \* to end.

**Rnd 14:** \* P4 (5, 5), k2, p2, k2, p4 (4, 5); rep from \* to end.

**Rnd 15:** \* P3 (4, 4), 2x1 RPC, p2, 2x1 LPC, p3 (3, 4); rep from \* to end.

**Rnds 16-18:** \* P3 (4, 4), k2, p4, k2, p3 (3, 4); rep from \* to end.

**Rnd 19:** \* P3 (4, 4), 2x1 LPC, p2, 2x1 RPC, p3 (3, 4); rep from \* to end.

**Rnd 20:** \* P4 (5, 5), k2, p2, k2, p4 (4, 5); rep from \* to end.

**Rnd 21:** \* P4 (5, 5), 2x1 LPC, 2x1 RPC, p4 (4, 5); rep from \* to end.

**Rnd 22:** \* P5 (6, 6), k4, p5 (5, 6); rep from \* to end.

**Rnd 23:** \* P5 (6, 6), m1p, ssk, k2tog, m1p, p5 (5, 6); rep from \* to end.

**Rnd 24:** \* P6 (7, 7), k2tog, p6 (6, 7); rep from \* to end – 8 sts dec'd, 104 (112, 120) sts rem. Purl 8 rnds.

## Shape Crown

**Rnd 1:** \* Purl to 2 sts bef m, p2tog; rep from \* to end – 8 sts dec'd, 96 (104, 112) sts rem.

**Rnd 2:** Purl.

**Rnd 3:** \* Purl to 2 sts bef m, p2tog; rep from \* to end – 8 sts dec'd, 88 (96, 104) sts rem.

**Rnd 4:** Purl.

**Rnd 5:** \* Purl to 2 sts bef m, p2tog; rep from \* to end – 8 sts dec'd, 80 (88, 96) sts rem.

**Rnd 6:** Purl.

**Rnd 7:** \* Purl to 2 sts bef m, p2tog; rep from \* to end – 8 sts dec'd, 72 (80, 88) sts rem.

**Rnd 8:** Purl.

**Rnd 9:** \* Purl to 2 sts bef m, p2tog; rep from \* to end – 8 sts dec'd, 64 (72, 80) sts rem.

**Rnd 10:** \* Purl to 2 sts bef m, p2tog; rep from \* to end – 8 sts dec'd, 56 (64, 72) sts rem.

**Rnd 11:** \* Purl to 2 sts bef m, p2tog; rep from \* to end – 8 sts dec'd, 48 (56, 64) sts rem.

**Rnd 12:** \* Purl to 2 sts bef m, p2tog; rep from \* to end – 8 sts dec'd, 40 (48, 56) sts rem.

**Rnd 13:** \* Purl to 2 sts bef m, p2tog; rep from \* to end – 8 sts dec'd, 32 (40, 48) sts rem.

**Rnd 14:** \* Purl to 2 sts bef m, p2tog; rep from \* to end – 8 sts dec'd, 24 (32, 40) sts rem.

*Knit. Relax. Smile. Repeat!*

2017 © Universal Yarn, Inc.

All rights reserved.

[www.universalyarn.com](http://www.universalyarn.com)

This pattern may not be reproduced for business, trade or sale.

### Medium (Large) Sizes Only

**Rnd 15:** \* Purl to 2 sts bef m, p2tog; rep from \* to end – 8 sts dec'd, 24 (32) sts rem.

### Large Size Only

**Rnd 16:** \* Purl to 2 sts bef m, p2tog; rep from \* to end – 8 sts dec'd, 24 sts rem.

### All Sizes

**Next rnd:** \* P3tog; rep from \* to end – 8 sts rem.

Break yarn leaving an 8" tail. Pass tail through rem live sts, pull taut, fasten off.









### FINISHING

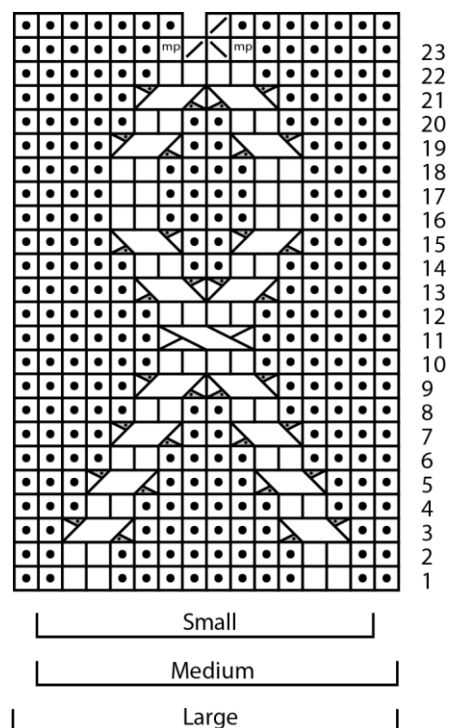
Weave in ends and block.

### Abbreviations

<b>cont</b>	continue
<b>circ</b>	circular
<b>dec('d)</b>	decrease(d)
<b>dpn(s)</b>	double pointed needle(s)
<b>inc('d)</b>	increase(d)
<b>k</b>	knit
<b>k2tog</b>	knit 2 stitches together (1 st dec'd)
<b>m</b>	marker
<b>m1P</b>	insert left needle from back to front under horizontal strand of yarn lying between st just worked and next st, purl this st through the front loop (1 st inc'd)
<b>meas</b>	measures
<b>ndl</b>	needle
<b>patt</b>	pattern
<b>p</b>	purl
<b>rem</b>	remain(ing)
<b>rep</b>	repeat
<b>ssk</b>	slip next 2 sts individually knitwise, slip them back to left needle in this position, knit them together through the back loops (1 st dec'd)
<b>st(s)</b>	stitch(es)

### Key

	knit
	purl
	2x1 RPC
	2x1 LPC
	2x2 LC
	k2tog
	ssk
	m1p



*Knit. Relax. Smile. Repeat!*

2017 © Universal Yarn, Inc.

All rights reserved.

[www.universalyarn.com](http://www.universalyarn.com)

This pattern may not be reproduced for business, trade or sale.