



Pattern Collection: Accessories



Button Up Scarf and Hat

Designed by Universal Design Team

SIZES

Hat – Adult Small (Medium, Large)

Scarf – One size

FINISHED MEASUREMENTS

Hat

Brim circumference: 17½ (19¼, 21)''

Note: Cable and Eyelet Rib pattern is very stretchy.

Height: 12¼''

Scarf

Length: 71''

Width: 12''

MATERIALS

Fibra Natura Dona (100% extra fine merino superwash; 50g/126 yds)

- 101 Vanilla (MC) – 2 balls (hat)
6 balls (scarf)
- 119 Clear Day (CC) – 1 ball

Needles: US Size 6 (4 mm) 16'' circular and set of dpns *or size needed to obtain gauge*

US Size 5 (3.75 mm) 16'' circular

Notions: Tapestry needle, four ½'' buttons, stitch marker, cable needle

GAUGE

23 sts x 26 rows = 4'' in Cable and Lace Patt

Save time, check your gauge.

Knit. Relax. Smile. Repeat!

2017 © Universal Yarn, Inc.

All rights reserved.

www.universalyarn.com

This pattern may not be reproduced for business, trade or sale.

PATTERN NOTES

This matching hat and scarf set features an all over cable and eyelet ribbing that makes this set as squishy as it is soft. It is finished with a bright pop of color on the button band.

STITCH GUIDE

2x2 Left Cross (LC)

Slip next 2 sts to cn and hold in front, k2 from left ndl, k2 from cn.

K1, P1 Ribbing

(even number of sts, in the round)

Rnd 1: * K1, p1; rep from * to end.

Rep Rnd 1 for patt.

K1, P1 Ribbing

(even number of sts, flat)

Row 1: * K1, p1; rep from * to end.

Rep Row 1 for patt.

Cable and Eyelet Rib

(multiple of 10 sts in the round)

Rnd 1: * P2, k4, p2, k2tog, yo; rep from * to end.

Rnds 2, 4, 6, & 8: * P2, k4, p2, k2; rep from * to end.

Rnd 3: * P2, 2x2 LC, p2, yo, ssk; rep from * to end.

Rnd 5: * P2, k4, p2, k2tog, yo; rep from * to end.

Rnd 7: * P2, k4, p2, yo, ssk; rep from * to end.

Rep Rnds 1-8 for patt.

Cable and Eyelet Rib Flat

(multiple of 10 sts plus 8, flat)

Row 1 (RS): * P2, k4, p2, k2tog, yo; rep from * to last 8 sts, p2, k4, p2.

Row 2, 4, 6, & 8 (WS): K2, p4, k2, * p2, k2, p4, k2; rep from * to end.

Row 3: * P2, 2x2 LC, p2, yo, ssk; rep from * to last 8 sts, p2, 2x2 LC, p2.

Row 5: * P2, k4, p2, k2tog, yo; rep from * to last 8 sts, p2, k4, p2.

Row 7: * P2, k4, p2, yo, ssk; rep from * to last 8 sts, p2, k4, p2.

Rep Rows 1-8 for patt.

HAT

Brim

With MC and smaller circ ndl, cast on 100 (110, 120) sts. Place marker and join in the rnd, being careful not to twist sts. Work K1, P1 Rib until piece meas 2¼". Switch to larger ndls.

Hat Body

Set-up Rnd 1: * P2, k4, p2, yo, ssk; rep from * to end.

Set-up Rnd 2: * P2, k4, p2, k2; rep from * to end.

Work Rnds 1-8 of Cable and Eyelet Rib 7 times.

Work Rnds 1-4 of Cable and Eyelet Rib one more time.

Crown Shaping

Note: When there are too many sts to fit on the circ ndl, switch to dpns.

Rnd 1: * P2tog, k4, p2tog, k2tog; rep from * to end – 30 (33, 36) sts dec'd, 70 (77, 84) sts rem.

Rnd 2: * P1, k4, p1, k1; rep from * to end.

Rnd 3: * P1, k4, p2tog; rep from * to m, remove m, p1, pm for new beg of rnd - 10 (11, 12) sts dec'd, 60 (66, 72) sts rem.

Rnd 4: * 2x2 LC, p2tog; rep from * to end - 10 (11, 12) sts dec'd, 50 (55, 60) sts rem.

Rnd 5: *K4, p1; rep from * to end.

Rnd 6: * Ssk, k2tog, p1; rep from * to end - 20 (22, 24) sts dec'd, 30, 33, 36 sts rem.

Rnd 7: * K2tog, p1; rep from * to end – 10 (11, 12) sts dec'd, 20 (22, 24) sts rem.

FINISHING

Break yarn leaving an 8" tail, pass tail through rem sts, pull taut, and fasten off. Block to measurements and weave in ends.

Button Band

With CC and larger ndls cast on 32 sts.

Row 1: Knit.

Row 2: K1, m1, knit to last st, m1, k1 – 2 sts inc'd, 34 sts.

Rows 3-4: Rep Rows 1-2 – 36 sts.

Rows 5-10: Knit.

Row 12: K1, ssk, knit to last 2 sts, k2tog, k1 – 2 sts dec'd, 34 sts rem.

Knit. Relax. Smile. Repeat!

2017 © Universal Yarn, Inc.

All rights reserved.

www.universalyarn.com

This pattern may not be reproduced for business, trade or sale.

Rows 13-14: Rep Rows 11-12 – 2 sts dec'd, 32 sts rem.

Bind off all sts. Using photo as a guide, secure button band and 2, ½" buttons to hat.

SCARF

Bottom Edge

With MC and larger ndl, cast on 68 sts.

Row 1 (RS): K5, pm, work in K1, P1 Rib to last 5 sts, pm, k5.

Row 2 (WS): K5, sl m, work in K1, P1 Rib to m, sl m, k5.

Rep Row 2 until piece meas 3", ending with a WS row.

Cable and Eyelet Section

Row 1 (RS): K5, sl m, work Cable and Eyelet Rib Flat to m, sl m, k5. Cont as est'd until Rows 1-8 of Cable and Eyelet patt have been completed 44 times. Rep Rows 1-4 of patt one more time.

Top Edge

Row 1 (RS): K5, sl m, work in K1, P1 Rib to m, sl m, k5. Rep Row 1 until Top Edge meas 3". Bind off all sts in patt.

FINISHING

Block to finished measurements and weave in ends.

Button Band

With CC and larger ndls cast on 36 sts.

Row 1: Knit.

Row 2: K1, m1, knit to last st, m1, k1 – 2 sts inc'd, 38 sts.

Rows 3-4: Rep Rows 1-2 – 40 sts.

Rows 5-10: Knit.

Row 12: K1, ssk, knit to last 2 sts, k2tog, k1 – 2 sts dec'd, 38 sts rem.

Rows 13-14: Rep Rows 11-12 – 2 sts dec'd, 36 sts rem.

Bind off all sts. Using photo as a guide, secure button band and 2, ½" buttons to scarf.



Knit. Relax. Smile. Repeat!

2017 © Universal Yarn, Inc.

All rights reserved.

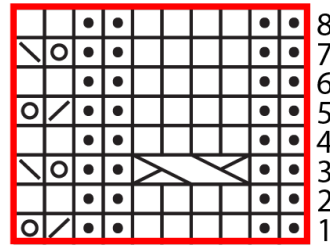
www.universalyarn.com

This pattern may not be reproduced for business, trade or sale.

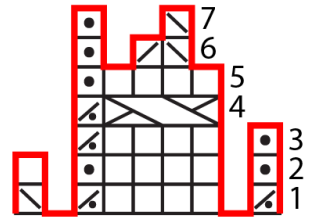
Abbreviations

beg	begin(ning)
CC	contrast color
circ	circular
cn	cable needle
cont	continue
dec('d)	decrease(d)
dpn(s)	double pointed needle(s)
inc('d)	increase(d)
k	knit
k2tog	knit 2 stitches together (1 st dec'd)
m	marker
m1	insert left needle from front to back under horizontal strand of yarn lying between st just worked and next st, knit or purl this st through the back loop (1 st inc'd)
meas	measures
ndl(s)	needle(s)
p	purl
p2tog	purl 2 sts together (1 st dec'd)
patt	pattern
rem	remain(ing)
rep	repeat
sl	slip
sl	slip
ssk	slip next 2 sts individually knitwise, slip them back to left needle in this position, knit them together through the back loops (1 st dec'd)
st(s)	stitch(es)
yo	yarn over

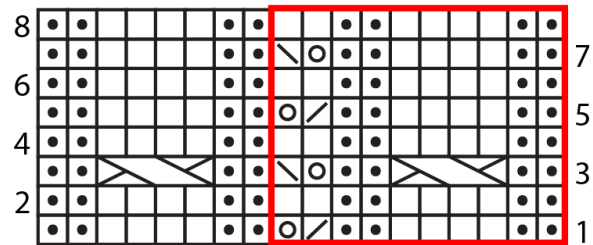
Cable and Eyelet Rib



Crown Shaping



Cable and Eyelet Rib Flat



Key

- repeat
- knit on RS, purl on WS
- purl on RS, knit on WS
- yo
- ssk
- k2tog
- p2tog
- 2x2 LC

Knit. Relax. Smile. Repeat!

2017 © Universal Yarn, Inc.

All rights reserved.

www.universalyarn.com

This pattern may not be reproduced for business, trade or sale.