



PATTERN COLLECTION

Crochet



Butterscotch Blanket

Designed by Ashley Jane McIntyre

DIFFICULTY

Intermediate

SIZES

One size

FINISHED MEASUREMENTS

Width: 34½"

Length: 40"

MATERIALS

[Universal Yarn Uptown Worsted Hues](#)
(100% anti-pilling acrylic; 100g/180 yds)

- 3307 Mimosa - 10 balls (See *pattern notes regarding yarn requirements*)

Hook: US Size 1/9 (5.5 mm) *or size needed to obtain gauge*

Notions: Tapestry needle, removable stitch markers

GAUGE

16 sts x 10 rows = 4" in Dashes and Ribs patt

Save time, check your gauge.

Knit, Relax, Smile, Repeat!

2022 © Universal Yarn, Inc.

www.universalyarn.com

All rights reserved. This pattern may not be reproduced for business, trade or sale.

Questions? Contact patterns@universalyarn.com

PATTERN NOTES

Sweet as candy, the Butterscotch Blanket is perfect for keeping your wee one cozy and warm. It features rich texture and glorious color changes thanks to the self-shading nature of our machine-washable, anti-pilling Uptown Worsted Hues.

The main portion of this blanket is worked flat from the bottom up, with a border added on and worked in unturned rounds. This pattern will indicate when your turning chain counts as a stitch or not. If it is counted as a stitch, you will always skip the first stitch of the row/round, and if not, you will ignore the chain and not skip any stitches.

Please note that the sample weighs 993 grams. You may wish to purchase an additional ball as insurance.

STITCH GUIDE

Front Post Double Crochet (FPdc)

Yo, insert hk from front to back to front around the post of the indicated st, pull up lp (3 lps on hk), yo and draw through 2 lps (2 lps on hk), yo and draw through 2 rem lps on hk.

Back Post Double Crochet (BPdc)

Yo, insert hk from back to front to back around the post of the indicated st, pull up lp (3 lps on hk), yo and draw through 2 lps (2 lps on hk), yo and draw through 2 rem lps on hk.

Foundation Row Cluster (frCL)

[Yo, insert hk from front to back to front around the post of the dc 3 sts back and pull up lp (3 lps on hk), yo draw through 2 lps] 3 times (4 lps on hk), yo, insert hk in next ch, yo and pull up lp (6 lps on hk), yo draw through 2 lps, yo draw through rem 5 lps.

Main Cluster (CL)

[Yo, insert hk from front to back to front around the post of the dc 3 sts back and pull up lp (3 lps on hk), yo, draw through 2 lps] 3 times (4 lps on hk), yo twice, insert hk from front to back to front around the next FP st, yo and pull up lp (7 lps on hk), [yo draw through 2 lps] twice, yo draw through rem 5 lps.

End of Row Cluster (erCL)

[Yo, insert hk from front to back to front around the post of the dc 3 sts back and pull up lp (3 lps

on hk), yo, draw through 2 lps] 3 times (4 lps on hk), yo, insert hk in top of turning ch, yo and pull up lp (6 lps on hk), yo draw through 2 lps, yo draw through rem 5 lps.

Dashes and Ribs Patt

(multiple of 4, plus 3)

Row 1 (RS): Dc in 4th ch from hk and each of the next 2 chs, frCL in next ch, * dc in next 3 chs, frCL in next ch; rep from * across, turn.

Row 2 (WS): Ch 3 (counts as dc here and throughout), dc in next 3 sts, * BPdc around the single post from the cluster below, dc in next 3 sts; rep from * to last st, dc in turning ch, turn.

Row 3: Ch 3, sk 1st st, * dc in next 3 sts **, CL in next st; rep from * across ending at **, erCL in last st, turn.

Rep Rows 2-3 for patt.

PATTERN BEGINS

BLANKET

Ch 135.

Row 1 (RS): Work Row 1 of Dashes and Ribs patt – 132 sts.

Rows 2-3: Work Rows 2-3 of Dashes and Ribs patt.

Rows 4-76: Rep Rows 2-3, 36 more times, do not fasten off.

Border (7 rounds)

During Rnd 1, if your next st aligns with a FP st from blanket along the top and bottom edges, then FPdc around it to maintain texture instead of using a standard dc. Maintain FP/BP pattern throughout.

Rnd 1 (RS): Ch 3 (counts as dc), dc evenly around the edges of the blanket, placing 3 dc in each corner st and taking care to have an odd number of sts between each corner st, sl st to beg ch-3. Place a removable marker in each corner st and move it up as you work each rnd.

Rnd 2: Ch 2 (does not count as st here and throughout), FPdc or BPdc to begin round, * *taking care to keep aligned with any FP st from Rnd 1*, alternate working FPdc and BPdc across to corner st; [dc, FPdc, dc] in marked corner st; rep from * around, sl st to bor.

Rnds 3-7: Ch 2, FPdc or BPdc around both the ch-2 and 1st FP/BP st, work FPdc in each FPdc and BPdc in each BPdc around, placing [dc, FPdc, dc] in each corner st and bringing new corner sts into patt, sl st to bor. Fasten off.

Knit, Relax, Smile, Repeat!

2022 © Universal Yarn, Inc.

www.universalyarn.com

All rights reserved. This pattern may not be reproduced for business, trade or sale.

Questions? Contact patterns@universalyarn.com

FINISHING

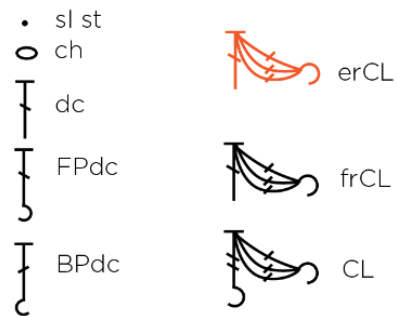
Weave in ends. Gently wash and block to finished measurements.

Abbreviations

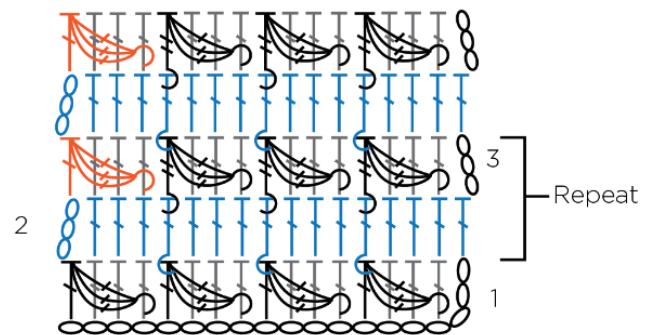
beg	begin(ing)
bor	beginning of round
BP	back post stitch
ch	chain
CL	cluster
cont	continue
dc	double crochet
FP	front post stitch
hk	hook
lp(s)	loop(s)

patt	pattern
rem	remain(ing)
rep	repeat
rnd	round
sk	skip
sl	slip
st(s)	stitch(es)
yo	yarn over
*	Beginning of repeat
**	Stopping point within a repeat

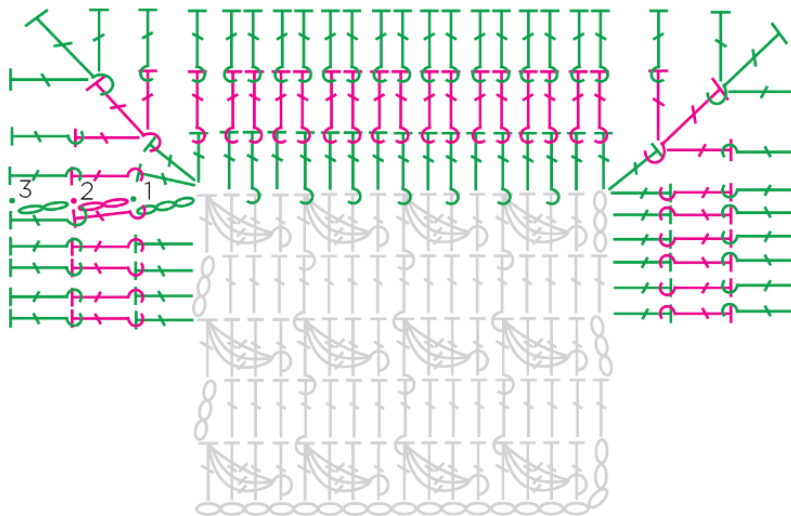
Key



Dashes and Ribs



Border



Knit, Relax, Smile, Repeat!

2022 © Universal Yarn, Inc.

www.universalyarn.com

All rights reserved. This pattern may not be reproduced for business, trade or sale.

Questions? Contact patterns@universalyarn.com