



Pattern Collection: Women



Blue Heartstrings

Designed by Universal Yarn Design Team

SIZES

Extra Small (Small, Medium, Large, 1X, 2X, 3X)

FINISHED MEASUREMENTS

Bust: 32½ (35, 39½, 42, 46½, 51, 55½)"

MATERIALS

Universal Yarn Major (100% acrylic; 200g/328 yds)

- 104 Pebbles – 2 (3, 3, 3, 4, 4, 4) balls

Needles: US Size 10½ (6.5 mm) straight *or size needed to obtain gauge*

US Size 10 (6 mm) straight, 24" circular (for neck edging)

Notions: Tapestry needle, cable needle, stitch holder, stitch markers, removable stitch markers

GAUGE

14 sts x 19 rows = 4" in rev St st using larger ndl

40-st Heartstrings Cable panel = 10" wide

Save time, check your gauge.

Knit, Relax, Smile, Repeat

2016 © Universal Yarn, Inc.

All rights reserved.

www.universalyarn.com

This pattern may not be reproduced for business, trade or sale.

PATTERN NOTES

This sweater is worked in pieces and seamed.

The yarn quantity given is enough to complete the project for that particular size. However, in order to make matching front/back and sleeves, you may wish to purchase an extra ball in order to start at the same place in the color patterning in the yarn ball.

STITCH GUIDE

3x1 Left Purl Cross (LPC): Sl next 3 sts to cn and hold in front, p1 from left ndl, k3 from cn.

3x1 Right Purl Cross (RPC): Sl next st to cn and hold in back, k3 from left ndl, p1 from cn.

3x3 Left Cross (LC): Sl next 3 sts to cn and hold in front, k3 from left ndl, k3 from cn.

3x3 Right Cross (RC): Sl next 3 sts to cn and hold in back, k3 from left ndl, k3 from cn.

K2, P2 Ribbing

(multiple of 4 sts)

Row 1: * K2, p2; rep from * to end.

Rep Row 1 for patt.

FRONT

With smaller ndl, cast on 64 (68, 76, 80, 88, 96, 104) sts. Work in K2, P2 Ribbing until piece meas 2½" from cast-on edge.

Establish Pattern

Switch to larger ndl.

Row 1 (RS): P12 (14, 18, 20, 24, 28, 32), pm, work Set-up Row 1 of Heartstrings Cable over 40 sts, pm, p12 (14, 18, 20, 24, 28, 32).

Row 2 (WS): Knit to m, work Set-up Row 2 of Heartstrings Cable to m, knit to end.

Cont in patt as est'd keeping sts each side in rev St st through Row 40 of patt, then rep Rows 3-40 until piece meas 14½ (15, 15, 15½, 15½, 16, 16)" from cast-on edge. Place removable markers each edge to indicate beginning of armhole opening. Cont in patt until piece meas 4½ (5, 5½, 6, 6½, 6¾, 7)" from markers, ending with WS row.

Shape Neck

Row 1 (RS): Work in patt over 26 (27, 31, 32, 36, 39, 43) sts, attach new ball of yarn and bind off center 12 (14, 14, 16, 16, 18, 18) sts, work in patt to end. Working both sides at once, dec 1 st each

side of Neck edge every row, 3 times, then dec 1 st each side of Neck edge every other row, 2 times – 21 (22, 26, 27, 31, 34, 38) sts rem for Shoulder. Work even until piece meas 7 (7½, 8, 8½, 9, 9¼, 9½)" from armhole markers, ending with WS row. Bind off all sts.

BACK

Work as for Front until piece meas 14½ (15, 15, 15½, 15½, 16, 16)" from cast-on edge. Place removable markers each edge to indicate beginning of armhole opening. Cont in patt until piece meas 7 (7½, 8, 8½, 9, 9¼, 9½)" from armhole markers, ending with WS row. Bind off all sts.

SLEEVES

With smaller ndl, cast on 32 (32, 32, 36, 36, 36, 36)

sts. Work in K2, P2 Ribbing until piece meas 2½" from cast-on edge.

Establish Pattern

Switch to larger ndl.

Row 1 (RS): Purl.

Row 2 (WS): Knit.

Inc row (RS): P1, m1p, purl to last st, m1p, p1 – 2 sts inc'd. Cont in rev St st, rep Inc row every 4 (4, 4, 4, 2, 2) rows, 1 (4, 10, 9, 12, 1, 1) more time(s), then rep Inc row every 6 (6, 6, 6, -, 4, 4) rows, 7 (5, 1, 2, -, 12, 13) time(s) – 50 (52, 56, 60, 62, 64, 66) sts. Work even in rev St st until Sleeve meas 16 (16, 16, 16½, 16½, 16½, 17)" from cast-on edge, ending with WS row. Bind off all sts.

FINISHING

Block pieces to finished measurements. Sew shoulder seams. Sew bind-off edge of Sleeve between armhole markers. Sew Sleeve and side seams.

Neck Edging

With smaller circ ndl, pick up and knit 22 (24, 24, 26, 26, 28, 28) sts along Back Neck and 30 (32, 32, 34, 34, 36, 36) sts along Front Neck – 52 (56, 56, 60, 60, 64, 64) sts. PM and join to work in the rnd.

Rnd 1: * K2, p2; rep from * to end. Rep Rnd 1, 3 more times. Bind off all sts in patt. Weave in ends.

Knit, Relax, Smile, Repeat!

2016 © Universal Yarn, Inc.

All rights reserved.

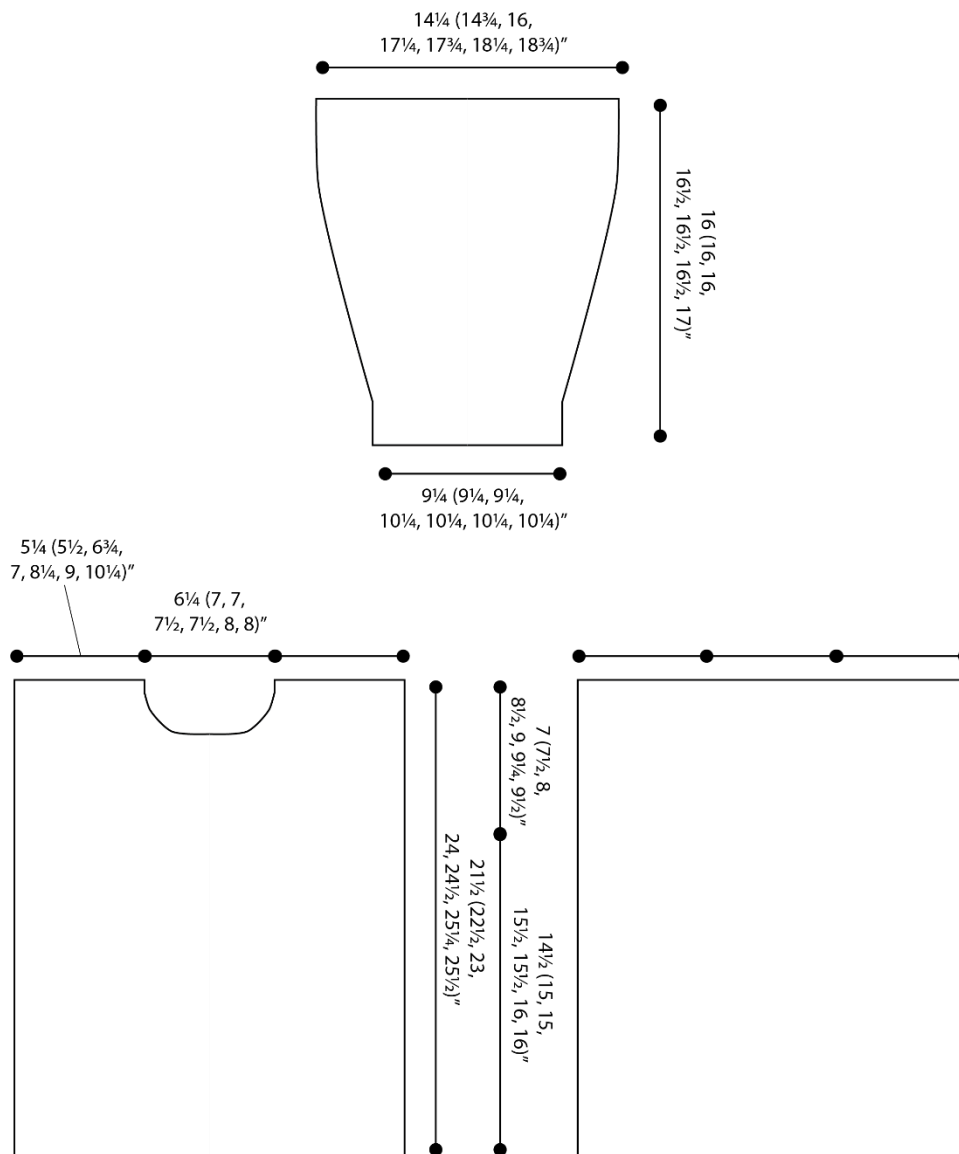
www.universalyarn.com

This pattern may not be reproduced for business, trade or sale.

Abbreviations

circ circular
cn cable needle
cont continue
dec('d) decrease(d)
inc('d) increase(d)
k knit
m marker
m1P insert left needle from back to front under horizontal strand of yarn lying between st just worked and next st, purl this st through the front loop (1 st inc'd)
meas measures
ndl needle

patt pattern
p purl
pm place marker
rem remain(ing)
rep repeat
rev St st reverse Stockinette stitch (purl on RS rows, knit on WS rows; in the rnd, purl every rnd)
rnd round
RS right side
sl slip
st(s) stitch(es)
WS wrong side

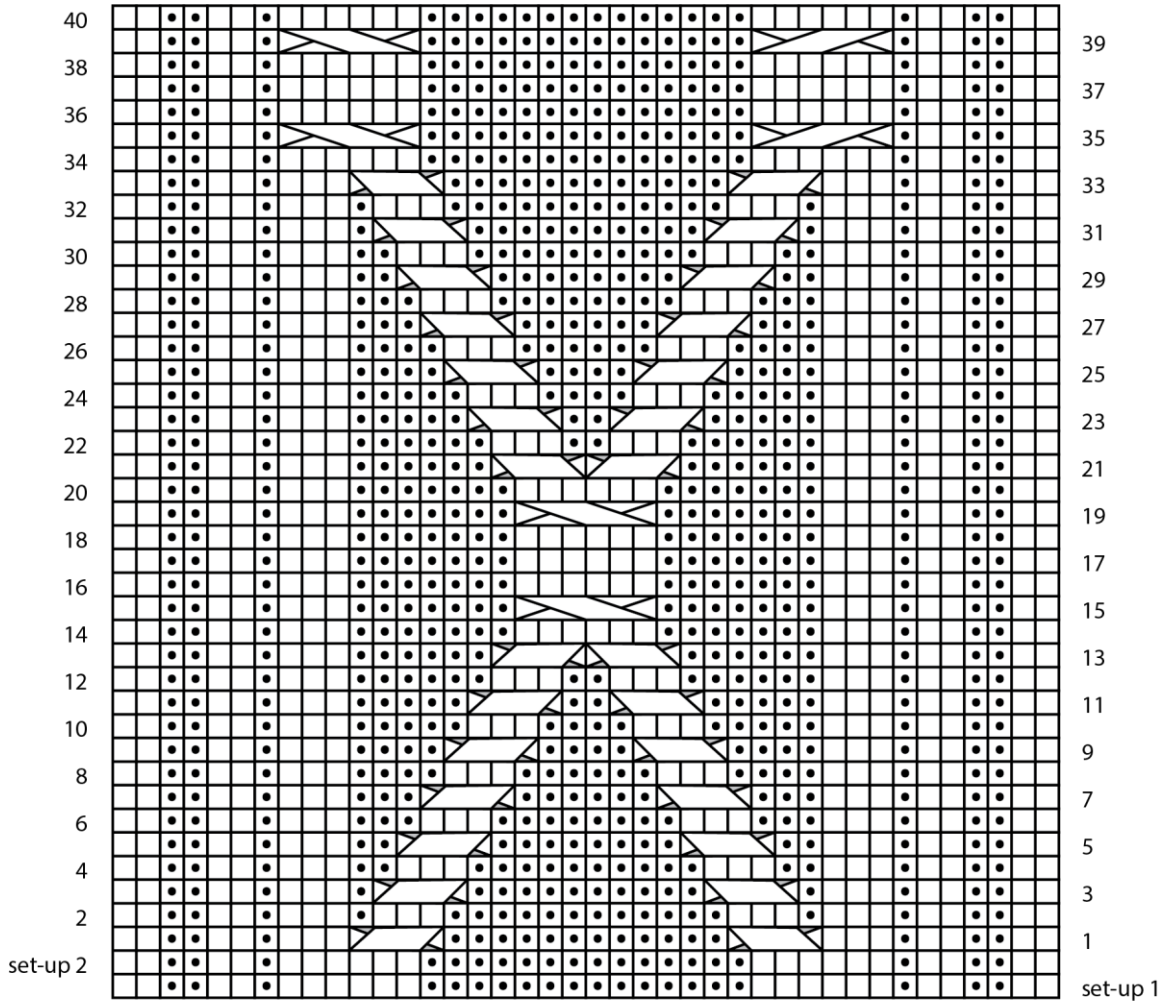


Knit, Relax, Smile, Repeat!

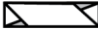
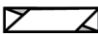


2016 © Universal Yarn, Inc.
 All rights reserved.
 www.universalyarn.com

This pattern may not be reproduced for business, trade or sale.

Heartstrings Cable



Key

- knit on RS, purl on WS
- purl on RS, knit on WS
-  3x1 LPC
-  3x1 RPC
-  3x3 LC
-  3x3 RC

Knit, Relax, Smile, Repeat!

2016 © Universal Yarn, Inc.
All rights reserved.
www.universalyarn.com

This pattern may not be reproduced for business, trade or sale.