



Pattern Collection: Accessory



Beyond the Sea Cow!

Designed by Universal Yarn Design Team

SIZE

One

FINISHED MEASUREMENTS

Circumference: 29"

Depth: 18½"

MATERIALS

Universal Yarn *Revolutions* (57% acrylic, 15% nylon, 10% wool, 10% alpaca, 8% mohair; 200g/612 yds)

- 102 Seascape (A) – 1 skein

Rozetti Yarns *Cotton Gold* (65% cotton, 27% payette, 8% metallic; 25 g/200 yds)

- 1100 (deep blue) (B) – 2 balls

Hook: US Size J-10 (6 mm) *or size needed to obtain gauge*

Notions: Tapestry needle

GAUGE

13 sts x 14 rnds = 4" in single crochet with 1 strand each of A & B held together

2 reps of Shell Windows = 4¾" wide with 1 strand each of A & B held together

Save time, check your gauge.

Knit, Relax, Smile, Repeat!

2018 © Universal Yarn, Inc.

All rights reserved.

www.universalyarn.com

This pattern may not be reproduced for business, trade or sale.

PATTERN NOTES

Light and lofty Revolutions meets glittering Cotton Gold in this cowl for a match made in heaven. One strand of each yarn is held together throughout the project.

The colors evoke an underwater feel, while the shell stitch pattern furthers the notion. The main pattern is a three row repeat using very basic crochet stitches, making this a suitable project for an adventurous beginner.

The Shell Windows stitch pattern is a multiple of 8 stitches. To make a wider cowl, simply begin with more stitches by adding multiples of 8. Each repeat of 8 stitches will add approximately 2½" of width to your cowl.

STITCH GUIDE

Shell Windows

(begins with multiple of 8 sts)

Rnd 1: Ch 3 (counts as dc), dc in next 2 sc, ch 1, sk next sc, dc in next 3 sc, * ch 1, sk next sc, dc in next 3 sc; rep from * around, join with sc to top of beg ch-3.

Rnd 2: Sc over joining sc, sk next 3 dc, 9 dc in next ch-1 sp, sk next 3 dc, * sc in next ch-1 sp, sk next 3 dc, 9 dc in next ch-1 sp, sk next 3 dc; rep from * around, join with sl st to beg sc.

Rnd 3: Ch 6 (counts as dc + ch 3), sc in center dc of 9-dc group, ch 3, * dc in sc, ch 3, sc in center dc of 9-dc group, ch 3; rep from * around, join with sl st to third ch of beg ch-6.

Rnd 4: Sl st in next ch-3 sp, ch 3 (counts as dc), 2 dc in same sp, ch 1, sk sc, 3 dc in next ch-3 sp, * ch 1, sk dc, 3 dc in next ch-3 sp, ch 1, sk sc, 3 dc in next ch-3 sp; rep from * around, join with sc to top of beg ch-3.

Rep Rnds 2-4 for patt.

COWL

Bottom Edge

Note: hold one strand each of A & B together throughout this cowl.

Rnd 1: Fsc 96, join with sl st to form ring, being careful not to twist.

Note: If you do not know fsc, you can also work this rnd as follows: ch 96, join with sl st to form

ring, sc in bottom bump of each ch around, join with sl st to beg sc.

Rnds 2-3: Sc in each sc around, join with sl st to beg sc.

Main Cowl

Work Rnds 1-4 of Shell Windows patt, then rep Rnds 2-4, 7 more times. Patt will be repeated 12 times across each rnd.

Upper Edge

Rnd 1: Sc in each st and sp around, join with sl st to beg sc – 96 sc.

Rnds 2-3: Sc in each sc around, join with sl st to beg sc.

Fasten off.

FINISHING

Weave in ends and block.

Abbreviations

ch	chain
dc	double crochet
fsc	foundation single crochet
hk	hook
patt	pattern
rep	repeat
rnd	round
sc	single crochet
sk	skip
sl	slip
sp	space(s)
st(s)	stitch(es)

Knit, Relax, Smile, Repeat!

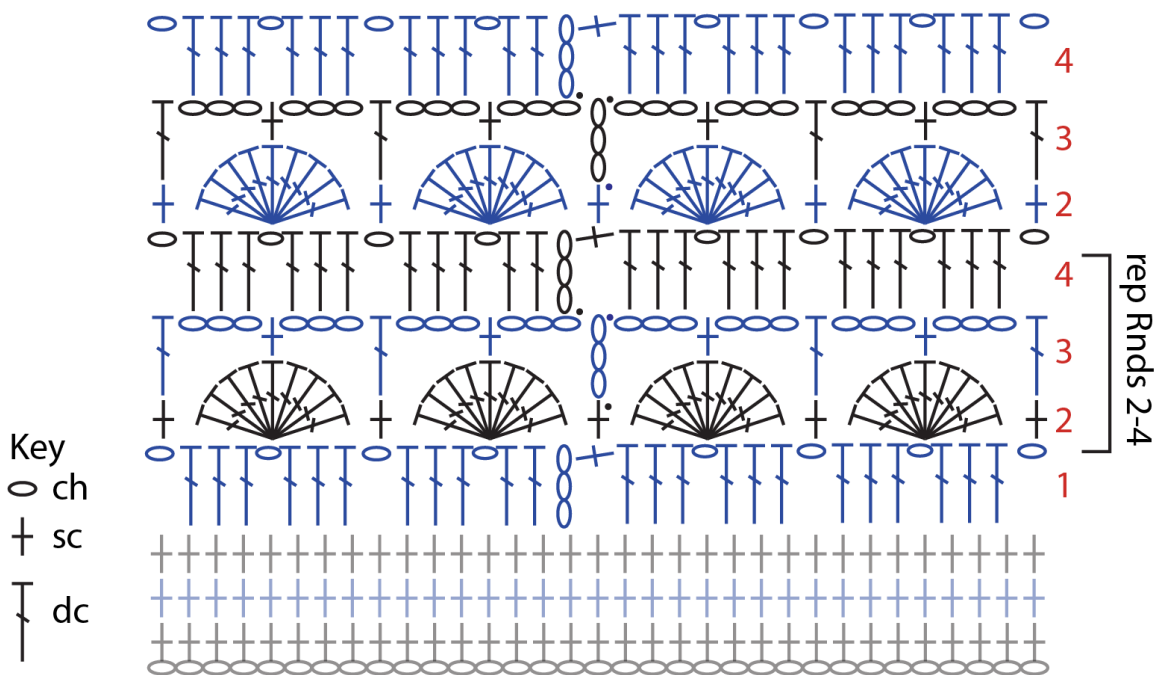
2018 © Universal Yarn, Inc.

All rights reserved.

www.universalyarn.com

This pattern may not be reproduced for business, trade or sale.

Shell Windows



Knit, Relax, Smile, Repeat!

2018 © Universal Yarn, Inc.
 All rights reserved.
www.universalyarn.com

This pattern may not be reproduced for business, trade or sale.