



PATTERN COLLECTION

Women



Beechnut Pullover

Designed by Amy Gunderson

SKILL

Knitting

DIFFICULTY

Intermediate

SIZES

Extra Small (Small, Medium, Large, 1X, 2X, 3X, 4X, 5X)

FINISHED MEASUREMENTS

Bust: 32½ (36¾, 40¾, 44¾, 48½, 52¾, 56¾, 60, 64½)"

Length: 17¾ (18, 18¾, 19¾, 20, 20½, 21½, 22, 22¾)"

Shown in Small size modeled with 4½" of positive ease.

MATERIALS

[Universal Yarn Wool Pop](#) (50% bamboo, 35% superwash wool, 15% polyamide; 100g/284 yds)

- 608 Lily Pad - 3 (4, 4, 4, 5, 5, 5, 6, 6) skeins

OR

- 626 Antique Coin - 3 (4, 4, 4, 5, 5, 5, 6, 6) skeins

Needles: US Size 6 (4 mm) 24" circular or longer (to accommodate large number of stitches) *or size needed to obtain gauge*

US Size 5 (3.75 mm) 16-24" circular and your preferred needle for knitting small circumferences in the round

Notions: Tapestry needle, stitch marker, removable stitch markers

Knit, Relax, Smile, Repeat!

2023 © Universal Yarn, Inc.

www.universalyarn.com

All rights reserved. This pattern may not be reproduced for business, trade or sale.

Questions? Contact patterns@universalyarn.com

GAUGE

22 sts x 29 rows = 4" in Stockinette Stitch (St st)

Save time, check your gauge.

PATTERN NOTES

Inspired by beautiful beech trees, this pullover is perfect for the transition from summer to autumn. It features gorgeous lace panels reminiscent of beech leaves along the sleeves. The body is knit in stockinette and features ribbing along the hem and sleeve cuffs. The sweater is finished off with an elegant square neckline. The construction of this sweater is interesting and engaging. The sleeve panels are knit first, then the body stitches and sleeve stitches are picked up along the panel edge and worked from the top-down. The side and sleeves are then seamed before picking up stitches to work the neck edging and sleeve cuffs.

Sloped Bind-off: On the row before the bind-off row, slip the last stitch of the row pwise wyib. On the bind-off row, sl 2, pass the first slipped st over the second slipped st, bind off rem sts as usual.

STITCH GUIDE

K1, P1 Rib

(odd number of sts)

Row 1 (RS): K1, * p1, k1; rep from * to end.

Row 2 (WS): * P1, k1; rep from * to last st, p1.

Rep Rows 1-2 for patt.

Beech Leaf

(begins as panel of 15 sts)

Note: After working rows 1-4, you will have a repeat of 17 sts, and after working rows 5-10, you will have a repeat of 15 sts.

Row 1 (RS): K1, yo, k5, yo, S2KP2, yo, k5, yo, k1 - 2 sts inc'd, 17 sts.

Row 2 (WS): Purl to end.

Row 3: K1, yo, k1, k2tog, p1, ssk, k1, yo, p1, yo, k1, k2tog, p1, ssk, k1, yo, k1.

Row 4: P4, k1, p3, k1, p3, k1, p4.

Row 5: K1, yo, k1, k2tog, p1, ssk, k1, p1, k1, k2tog, p1, ssk, k1, yo, k1 - 2 sts dec'd, 15 sts. **Row 6:** P4, k1, [p2, k1] 2 times, p4.

Row 7: [K1, yo] 2 times, k2tog, p1, ssk, p1, k2tog, p1, ssk, [yo, k1] 2 times.

Row 8: P5, k1, [p1, k1] 2 times, p5.

Row 9: K1, yo, k3, yo, ssk, p1, k3tog, yo, k3, yo, k1.

Row 10: Purl to end. Rep Rows 1-10 for patt.

PATTERN BEGINS

SLEEVE PANELS

(make two)

With larger ndl, cast on 33 sts.

Set-up Row (WS): P1, pm, p15, pm, k1, pm, p15, pm, p1.

Row 1 (RS): K1, sl m, work Row 1 of Beech Leaf patt to m, sl m, p1, sl m, work Row 1 of Beech Leaf patt to m, sl m, k1.

Row 2 (WS): P1, sl m, work Row 2 of Beech Leaf patt to m, sl m, k1, sl m, work Row 2 of Beech Leaf patt to m, sl m, p1.

Rows 1-2 establish patt. Cont as est'd until Sleeve Panel meas 16 (17, 17½, 19½, 20½, 21, 22½, 23½, 24½)" from cast-on edge, ending with a WS Row. Bind off all sts.

FRONT

Note: See schematic for a visual representation of how each Sleeve Panel should be oriented.

With larger ndl and RS facing, beg at cast-on edge of one Sleeve Panel, pick up and knit 88 (93, 98, 106, 111, 116, 124, 128, 134) sts evenly along side edge of panel, cast on 47 (49, 49, 51, 51, 53, 53, 55, 55) Neck sts, pick up and knit 88 (93, 98, 106, 111, 116, 124, 128, 134) sts evenly along side edge of second Sleeve Panel, beginning at the bind-off edge - 223 (235, 245, 263, 273, 285, 301, 311, 323) sts.

Row 1 (WS): Purl to end.

Row 2 (RS): Knit to end. Cont even in St st until piece meas 1¼ (1¼, 1½, 1½, 1¾, 1¾, 2, 2, 2¼)" from picked-up edge, ending with a WS row.

Shape Sleeves

Note: Use the Sloped Bind-off method throughout Sleeve shaping.

Bind off 7 (6, 5, 4, 4, 3, 3, 2) sts at the beg of the next 6 (6, 4, 3, 9, 6, 8, 18, 4) rows, then bind off 9 (8, 7, 6, 6, 5, 5, 5, 4) sts at the beg of the foll 10 (12, 16, 21, 17, 24, 24, 18, 34) rows - 66 (66, 66, 69, 69, 69, 72, 72, 72) sts bound off each Sleeve, 91 (103, 113, 125, 135, 147, 157, 167, 179) sts rem for Body.

Body

Work even in St st until Body meas 9¼ (9¼, 10, 10, 10¼, 10¼, 10½, 10½, 10¾)" from last Sleeve bind-off. Change to smaller ndl.

Knit, Relax, Smile, Repeat!

2023 © Universal Yarn, Inc.

www.universalyarn.com

All rights reserved. This pattern may not be reproduced for business, trade or sale.

Questions? Contact patterns@universalyarn.com

Hem

Work in K1, P1 Rib until piece meas 11½ (11½, 11¾, 11¾, 12, 12, 12¼, 12¼, 12½)" from last Sleeve bind-off. Bind off all sts in patt.

BACK

Work as for Front.

FINISHING

Gently wash and block pieces to finished measurements. Weave in ends. Sew Side and Sleeve seams.

Neck Edging

With smaller circ ndl and RS facing, beg at Right shoulder, pick up and knit 31 sts evenly along Sleeve Panel, 1 Corner st along Back Neck cast-on edge (place removable m on this st), 45 (47, 47, 49, 49, 51, 51, 53, 53) sts along Back Neck cast-on edge, 1 Corner st along Back Neck cast-on edge, (place removable m on this st), 31 sts along Sleeve Panel, 1 Corner st along Front Neck cast-on edge (place removable m on this st), 45 (47, 47, 49, 49, 51, 51, 53, 53) sts along Back Neck cast-on edge, 1 Corner st along Front Neck cast-on edge (place removable m on this st) - 156 (160, 160, 164, 164, 168, 168, 172, 172) sts. PM and join to knit in the rnd.

Rnd 1: [Work in K1, P1 Rib to 1 st bef Corner st, S2KP2] 3 times, work in K1, P1 Rib to 1 st bef Corner st, S2KP2 (removing bor m as needed to complete dec), replace bor m - 8 sts dec'd, 148 (152, 152, 156, 156, 160, 160, 164, 164) sts rem.

Rnd 2: Work even as est'd to end.

Rnd 3: [Cont as est'd to 1 st bef Corner st, S2KP2] 3 times, cont as est'd to 1 st bef Corner st, S2KP2 (removing bor m as needed to complete dec), replace bor m - 8 sts dec'd, 140 (144, 144, 148, 148, 152, 152, 156, 156) sts rem.

Rnds 4-5: Rep Rnds 2-3 - 8 sts dec'd, 132 (136, 136, 140, 140, 144, 144, 148, 148) sts rem.

Rnd 6: Work even as est'd to end.

Bind off all sts in patt.

Sleeve Cuffs

Note: Choose your preferred needle for knitting small circumferences in the round.

With smaller ndl and RS facing, beg at center of underarm, pick up and knit 44 (44, 46, 46, 50, 50, 52, 52, 56) sts evenly along Sleeve Cuff. PM and join to knit in the rnd.

Work in K1, P1 Rib until piece meas 1½" from picked-up edge. Bind off all sts in patt.

Weave in rem ends.



Knit, Relax, Smile, Repeat!

2023 © Universal Yarn, Inc.

www.universalyarn.com

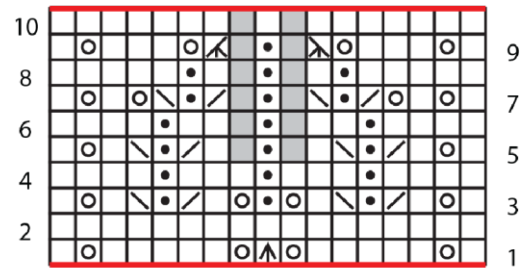
All rights reserved. This pattern may not be reproduced for business, trade or sale.

Questions? Contact patterns@universalyarn.com

Abbreviations

*	indicates a repeat section
bef	before
bor	beginning of round
circ	circular
dec('d)	decrease(d)
est'd	established
fol	follow
k	knit
k2tog	knit 2 stitches together (1 st dec'd)
m	marker
meas	measures
ndl	needle
p	purl
patt	pattern
pm	place marker
rem	remain(ing)
rep	repeat
rnd(s)	round(s)
RS	right side
sl	slip
ssk	slip next 2 sts individually knitwise, slip them back to left needle in this position, knit them together through the back loops (1 st dec'd)
St st	Stockinette stitch (knit on RS rows, purl on WS rows; in the rnd, knit every rnd)
st(s)	stitch(es)
WS	wrong side
yo	yarn over

Beech Leaf



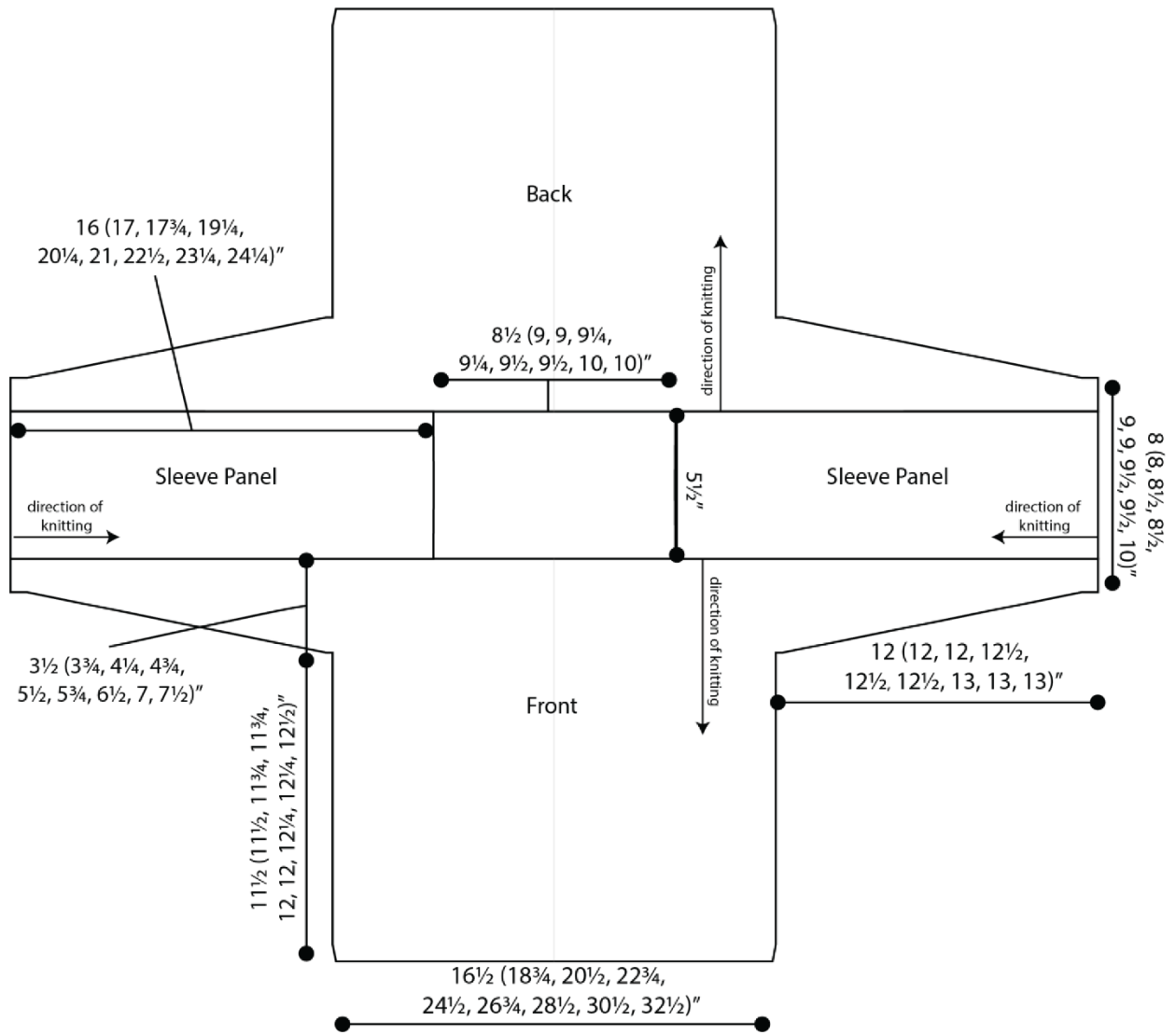
Key

	pattern repeat		k3tog
	no stitch		ssk
	knit on RS, purl on WS		k2tog
	purl on RS, knit on WS		ssk
	yo		
	S2KP2		

Knit, Relax, Smile, Repeat!

2023 © Universal Yarn, Inc.
www.universalyarn.com

All rights reserved. This pattern may not be reproduced for business, trade or sale.
Questions? Contact patterns@universalyarn.com



Knit, Relax, Smile, Repeat!

2023 © Universal Yarn, Inc.

www.universalyarn.com

All rights reserved. This pattern may not be reproduced for business, trade or sale.

Questions? Contact patterns@universalyarn.com