



Pattern Collection: Accessories



Autumn Air Toboggan

Designed by Universal Yarn Design Team

SIZES

Child (Adult Small, Adult Medium)
Shown in Child size.

FINISHED MEASUREMENTS

Brim Circumference: 14½ (16½, 18¼)''

Stretches to approx. 18 (20, 22½)''

Length: 8¾ (10, 10)''

MATERIALS

Universal Yarn Classic Shades (70% acrylic, 30% wool; 100g/197 yds)

- 744 Flash – 1 skein (all sizes)

Needles: US Size 8 (5 mm) 16'' circular and set of dpns *or size needed to obtain gauge*

US Size 7 (4.5 mm) 16'' circular

Notions: Tapestry needle, 3'' pom-pom maker, stitch markers

GAUGE

22 sts x 24 rnds = 4'' in Basketweave patt using larger ndl

Save time check your gauge.

Knit. Relax. Smile. Repeat!

2019 © Universal Yarn, Inc.

All rights reserved.

www.universalyarn.com

This pattern may not be reproduced for business, trade or sale.

PATTERN NOTES

When we think of Autumn, we think of crisp air, vibrant colors of leaves, mugs of cider, and arguably most important of all; hats! The Autumn Air Toboggan, knit in our self-striping Classic Shades yarn, features a fun textured Basketweave pattern that reminds us of all things Autumn. It's also a perfect project to whip up for the chilly winter days ahead!

This hat is knit in the round from the bottom up. A large 3" pom-pom adorns the crown. Note that all slip stitches in this pattern are slipped purlwise with the yarn held in front. You may wish to place markers between pattern repeats to help you stay on track. The stitch pattern featured in this pattern is very stretchy. Choose a size with up to 4" of negative ease.

STITCH GUIDE

Brim Ribbing

(Multiple of 5 sts)

Rnd 1: * P2, k1, p1, k1; rep from * to end.
Rep Rnd 1 for patt.

Basketweave

(Multiple of 6 sts)

Rnds 1-2: * P2, k1; rep from * to end.
Rnds 3-4: * P1, [sl 1 wyif] 3 times, p1, k1; rep from * to end.
Rnds 5-6: Rep Rnd 1.
Rnds 7-8: * Sl 1 wyif, p1, k1, p1, [sl 1 wyif] 2 times; rep from * to end.
Rep Rnds 1-8 for patt.

HAT

With smaller ndl, cast on 80 (90, 100) sts. PM and join to knit in the rnd, being careful not to twist.

Brim Ribbing

Rnd 1: Work in Brim Ribbing patt to end. Patt will be repeated 16 (18, 20) times across each rnd.
Rnd 2-11: Rep Rnd 1.
Rnd 12: * P2, k1, p1, m1p, k1; rep from * to end – 16 (18, 20) sts inc'd, 96 (108, 120) sts.
Change to larger circ ndl.

Main Hat

Rnd 1: Work Rnd 1 of Basketweave patt to end. Patt will be repeated 16 (18, 20) times across each rnd.

Rnd 2: Work Rnd 2 of Basketweave patt to end. Con't as est'd through Rnd 8 of Basketweave patt, then rep Rnds 1-8 of Basketweave patt 2 (3, 3) more times. Piece meas approx. 6 (7¼, 7¼)" from cast-on edge.

Crown Shaping

Note 1: This section is also charted for your convenience.

Note 2: Change to DPNs when there are too few stitches to fit comfortably onto circular needle.

Rnd 1: * P2tog, k1, p2, k1; rep from * to end – 16 (18, 20) sts dec'd, 80 (90, 100) sts rem.
Rnd 2: * P1, k1, p2, k1; rep from * to end.
Rnd 3-4: * [Sl 1 wyif] 3 times, p1, k1; rep from * to end.
Rnd 5: * P1, k1, p2tog, k1; rep from * to end – 16 (18, 20) sts dec'd – 64 (72, 80) sts rem.
Rnd 6: * P1, k1; rep from * to end.
Rnd 7-8: * P1, k1, [sl 1 wyif] 2 times; rep from * to end.
Rnd 9: * P1, p2tog, k1; rep from * to end – 16 (18, 20) sts dec'd, 48 (54, 60) sts rem.
Rnds 10-11: * P2, k1; rep from * to end.
Rnd 12: * P2tog, k1; rep from * to end – 16 (18, 20) sts dec'd, 32 (36, 40) sts rem.
Rnd 13: * P1, k1; rep from * to end.
Rnd 14: * K2tog; rep from * to end – 16 (18, 20) sts dec'd, 16 (18, 20) sts rem.
Rnd 15: Knit.
Rnd 16: * K2tog; rep from * to end – 8 (9, 10) sts dec'd, 8 (9, 10) sts rem.

Break yarn leaving 6" tail. Pass tail through rem live sts, pull taut, fasten off.

FINISHING

Gently wash and block to finished measurements. Weave in ends. Make a 3" pom-pom using pom-pom maker. Sew to top of hat.

Knit. Relax. Smile. Repeat!

2019 © Universal Yarn, Inc.

All rights reserved.

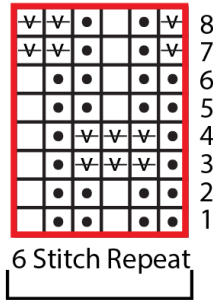
www.universalyarn.com

This pattern may not be reproduced for business, trade or sale.

Abbreviations:

approx	approximately
dec('d)	decrease(d)
dpn(s)	double pointed needle(s)
est'd	established
inc('d)	increase(d)
k	knit
k2tog	knit 2 sts together (1 st dec'd)
m1P	insert left needle from back to front under horizontal strand of yarn lying between st just worked and next st, purl this st through the front loop (1 st inc'd)
meas	measures
ndl	needle
p	purl
p2tog	purl 2 sts together (1 st dec'd)
patt	pattern
pm	place marker
pwise	purlwise
rem	remain(ing)
rep	repeat
rnd	round
sl	slip
wyif	with yarn held in front

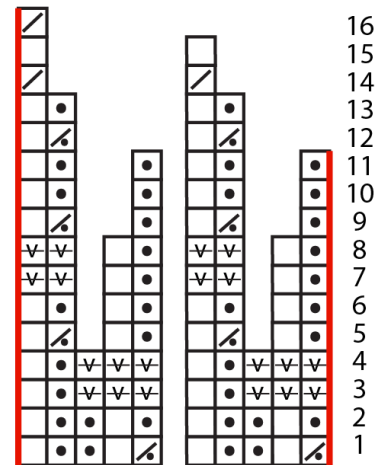
Basketweave



Key

- pattern repeat
- knit
- purl
- / p2tog
- \ k2tog
- v sl 1 pwise wyif

Crown Shaping



Knit. Relax. Smile. Repeat!

2019 © Universal Yarn, Inc.

All rights reserved.

www.universalyarn.com

This pattern may not be reproduced for business, trade or sale.