



Pattern Collection: Women



Atotoztli

Designed by Amy Gunderson

DIFFICULTY

Intermediate

SIZES

Small (Medium, Large, 1X, 2X, 3X)
Shown in Small size with 3" of positive ease.

FINISHED MEASUREMENTS

Bust: 36 (41½, 44, 49½, 52, 57½)"
Choose a size with up to 6" of positive ease.

MATERIALS

Universal Yarn Deluxe Worsted Tweed Superwash (90% superwash wool, 7% acrylic, 3% viscose; 100g/218 yds)

- 907 Denim (MC) – 5 (6, 7, 8, 8, 9) balls
- 911 Walnut (CC1) – 1 (2, 2, 2, 2, 2) balls
- 910 Porcelain (CC2) – 1 (2, 2, 2, 2, 2) balls
- 904 Olive (CC3) – 1 (2, 2, 2, 2, 2) balls

Needles: US Size 8 (5 mm) set of dpns, straight, 16" circular *or size needed to obtain gauge*

US Size 7 (4.5 mm) straight *or size needed to obtain gauge*

US Size 6 (4 mm) set of dpns, straight, 16" circular *or size needed to obtain gauge*

Knit. Relax. Smile. Repeat!

2020 © Universal Yarn, Inc.

All rights reserved.

www.universalyarn.com

This pattern may not be reproduced for business, trade or sale.

Notions: Tapestry needle, stitch markers, stitch holders

GAUGE

18 sts x 22 rows = 4" in stranded knitting using US Size 8 (5 mm)

18 sts x 26 rows = 4" in Textured Chevrons patt using US Size 7 (4.5mm)

18 sts x 40 rows = 4" in garter stitch using US Size 6 (4 mm)

PATTERN NOTES

A turtleneck sweater may be good, but a cowl neck sweater might even better! Throw in a spunky stranded colorwork pattern and you have a perfect cold weather garment. Atotozli combines the lovely texture of Deluxe Worsted Tweed Superwash with a geometric multicolor pattern and textured body stitches for a whole lot of fun in one pretty pullover.

Back and Front are knit flat in rows. Sleeves are knit in the round to the Raglan Shaping section, and then worked back and forth in rows. Cowl neck is knit in the round.

When increasing or decreasing in stranded pattern, work the increased or decreased stitch in whatever the next color of the chart would be.

STITCH GUIDE

Textured Chevrons

(multiple of 6 sts + 7)

Row 1 (RS): Knit.

Row 2 (WS): K1, * p5, k1; rep from * to end.

Row 3: P2, k3, * p3, k3; rep from * to last 2 sts, p2.

Row 4: P1, k2, * [p1, k2] 2 times; rep from * to last 4 sts, p1, k2, p1.

Row 5: K2, * p3, k3; rep from * to last 5 sts, p3, k2.

Row 6: P3, k1, * p5, k1; rep from * to last 3 sts, p3.

Rep Rows 1-6 for patt.

BACK

With MC and Size 6 ndl, cast on 103 (115, 121, 133, 139, 151) sts.

Hem

Knit 12 rows.

Main Body

Switch to Size 7 ndl. Beg with RS Row 1, work in Textured Chevrons patt until piece meas 2" from cast-on edge, ending with WS row.

Dec row (RS): K1, k2tog, work in patt to last 3 sts, ssk, k1 – 2 sts dec'd. Rep Dec row every 8 rows, 4 (4, 6, 6, 8, 8) more times, then rep Dec row every 6 rows, 6 (6, 4, 4, 2, 2) times – 81 (93, 99, 111, 117, 129) sts rem. Work even in patt until piece meas 16 (16, 16½, 16½, 17, 17)" from cast-on edge, ending with WS row.

Raglan Shaping

Bind off 5 (6, 6, 7, 7, 8) sts at beg of next 2 rows – 71 (81, 87, 97, 103, 113) sts rem. Work 2 rows even in patt.

Dec row (RS): K1, ssk, work in patt to last 3 sts, k2tog, k1 – 2 sts dec'd. Rep Dec row every other RS row, 3 (2, 1, 1, 0, 0) more time(s), then rep Dec row every RS row, 15 (17, 20, 19, 22, 19) times – 33 (41, 43, 55, 57, 73) sts rem.

Next row (RS): Rep Dec row – 2 sts dec'd.

Next row (WS): P1, p2tog, work in patt to last 3 sts, ssp, p1 – 2 sts dec'd. Cont to work a Dec row every row, - (4, 4, 10, 10, 18) more times. Bind off rem 29 (29, 31, 31, 33, 33) sts.

FRONT

Work as for Back.

SLEEVES

With CC2 and Size 6 dpns, cast on 43 (43, 43, 47, 47, 47) sts. Divide evenly among dpns and join to work in the rnd.

Cuff

With CC3, [purl 1 rnd, knit 1 rnd] 4 times.

Main Sleeve

Switch to Size 8 dpns. Work Rnds 1-4 of Stranded Chart.

Inc rnd: K1, m1, work Rnd 5 of Stranded Chart to last st, m1, k1 – 2 sts inc'd. Cont to follow chart, work an Inc rnd every 8 (6, 4, 4, 4, 4) rnds, 6 (9,

Knit. Relax. Smile. Repeat!

2020 © Universal Yarn, Inc.

All rights reserved.

www.universalyarn.com

This pattern may not be reproduced for business, trade or sale.

2, 2, 7, 16) more times, then rep Inc rnd every 10 (8, 6, 6, 6, 6) rnds, 2 (2, 11, 11, 8, 2) times –61 (67, 71, 75, 79, 85) sts. Work even in patt until piece meas 18 (18, 18¼, 18¼, 18½, 18½)” from cast-on edge.

Raglan Shaping

Note: Work will be done back and forth in rows now. Work onto circ ndl.

Row 1 (RS): Work in patt to last 5 (6, 6, 7, 7, 8) sts of rnd, bind off next 10 (12, 12, 14, 14, 16) sts, work in patt to end of row, turn – 51 (55, 59, 61, 65, 69) sts rem. Work a WS row even.

Dec row (RS): K1, ssk, work in patt to last 3 sts, k2tog, k1 – 2 sts dec'd. Rep Dec row every other RS row, 3 (3, 3, 4, 3, 4) more times, then rep Dec row every RS row, 10 (12, 12, 10, 13, 10) times – 23 (23, 27, 31, 31, 39) sts rem.

Next row (RS): Rep Dec row – 2 sts dec'd.

Next row (WS): P1, p2tog, work in patt to last 3 sts, ssp, p1 – 2 sts dec'd. Cont to work a Dec row every row, 2 (2, 4, 6, 6, 10) more times. Bind off rem 15 sts.

COWL NECK

With Size 8 circ ndl and CC1, cast on 92 (92, 96, 96, 100, 100) sts. PM and join to work in the rnd.

Note: There will not always be a full rep of Stranded Chart.

Work Rnds 1-24 of Stranded Chart, 1 time.

Work Rnds 1-7 of Stranded Chart, 1 more time.

Rep Rnds 19-24 of Stranded Chart, 3 times.

Cowl Edging

Switch to Size 6 circ ndl. With CC3, [purl 1 rnd, knit 1 rnd], 3 times, purl 1 rnd. With CC2, bind off all sts kwise.

FINISHING

Block pieces to finished measurements. Sew raglan seams. Sew underarm and side seams.

Sew cast-on edge of Cowl Neck to neck opening. Weave in ends.

Abbreviations

approx	approximately
bef	before
beg	begin(ning)
CC	contrast color
circ	circular
cont	continue
dec('d)	decrease(d)
dpn(s)	double pointed needle(s)
est'd	established
inc('d)	increase(d)
k	knit
k2tog	knit 2 stitches together (1 st dec'd)
meas	measures
ndl	needle
p	purl
p2tog	purl 2 sts together (1 st dec'd)
patt	pattern
pm	place marker
rem	remain(ing)
rep	repeat
rnd	round
RS	right side
ssk	slip next 2 sts individually knitwise, slip them back to left needle in this position, knit them together through the back loops (1 st dec'd)
ssp	slip next 2 sts individually knitwise, slip them back to left needle in this position, purl them together through the back loops (1 st dec'd)
St st	Stockinette stitch (knit on RS rows, purl on WS rows; in the rnd, knit every rnd)
st(s)	stitch(es)
tog	together
WS	wrong side
yo	yarn over

Knit. Relax. Smile. Repeat!

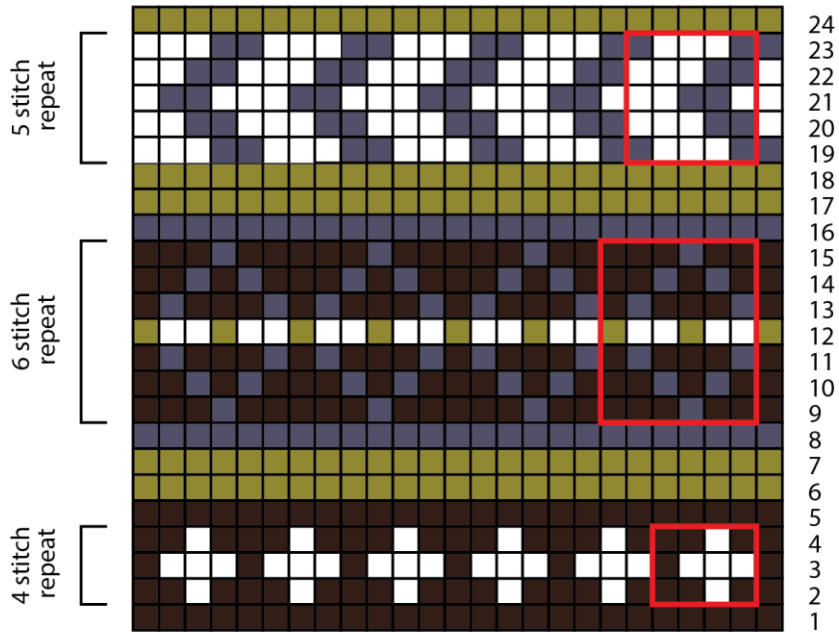
2020 © Universal Yarn, Inc.

All rights reserved.

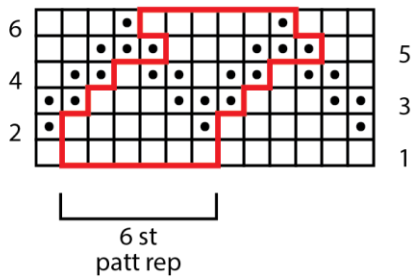
www.universalyarn.com

This pattern may not be reproduced for business, trade or sale.

Stranded Chart



Textured Chevrons



Key

- knit on RS, purl on WS
- purl on RS, knit on WS
- MC
- CC1
- CC2
- CC3
- patt rep

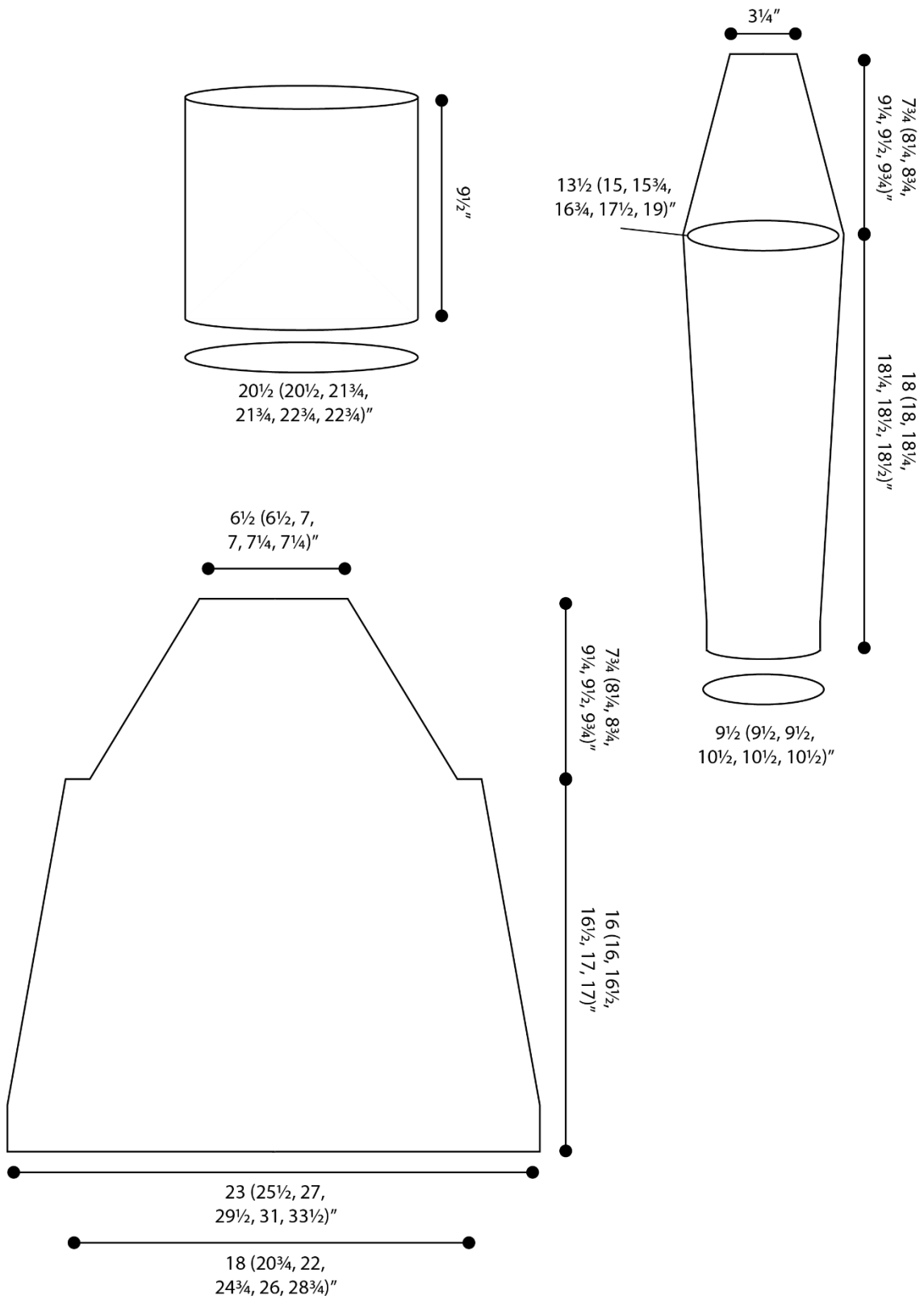
Knit. Relax. Smile. Repeat!

2020 © Universal Yarn, Inc.

All rights reserved.

www.universalyarn.com

This pattern may not be reproduced for business, trade or sale.



Knit. Relax. Smile. Repeat!

2020 © Universal Yarn, Inc.

All rights reserved.

www.universalyarn.com

This pattern may not be reproduced for business, trade or sale.