



Pattern Collection: Women



Asheville Sweater & Hat

Designed by Amy Gunderson

SIZES

Sweater: Extra Small (Small/Medium, Medium/Large, Large/1X, 2X)
Shown in Small/Medium Size.

Hat: Adult Medium

FINISHED MEASUREMENTS

Bust: 31¼ (36, 40¾, 45¾, 50½)''

Hat Circumference: 21½''

MATERIALS

Universal Yarn *Deluxe Worsted Tweed Superwash* (90% superwash wool, 7% acrylic, 3% viscose; 100g/218 yds)

- 901 Garnet (MC) – 5 (5, 6, 7, 8) balls for Sweater, 1 ball for Hat
- 912 Ebony (CC1) – 1 ball each both Sweater & Hat
- 910 Porcelain (CC2) – 1 ball each both Sweater & Hat

Needles: US Size 7 (4.5 mm) 16'', 24'', 32'' circular, set of dpns *or size needed to obtain gauge*

US Size 5 (3.75 mm) 16'', 32'' circular, set of dpns

Notions: Tapestry needle, stitch markers, stitch holders, pom-pom maker

GAUGE

20 sts x 24 rows = 4'' in stranded knitting using larger needle

Save time, check your gauge.

Knit. Relax. Smile. Repeat!

2015 © Universal Yarn, Inc.

All rights reserved.

www.universalyarn.com

This pattern may not be reproduced for business, trade or sale.

PATTERN NOTES

The sweater is knit seamlessly from the top down. Color changes are achieved by using the stranded method of knitting.

Work begins on a 16" circular. When there are too many stitches to fit comfortably on this needle, switch to a longer circular.

The hat is knit from the bottom up.

STITCH GUIDE

2x2 Ribbing

(multiple of 4 sts)

Rnd 1: * K2, p2; rep from * to end.

Rep Rnd 1 for patt.

Checks

(multiple of 6 sts)

Rnds 1-3: * K3, p3; rep from * to end.

Rnds 4-6: * P3, k3; rep from * to end.

Rep Rnds 1-6 for patt.

SWEATER INSTRUCTION

COLLAR

With MC and smaller ndl, cast on 96 (100, 104, 108, 112) sts.

Work in 2x2 Ribbing until Collar meas 2".

Yoke

Working onto larger ndl, knit 1 rnd.

Next rnd 1: Knit, inc'ing 16 (20, 24, 28, 32) sts evenly around – 112 (120, 128, 136, 144) sts.

Rnds 2-5: Work Rnds 2-5 of Yoke chart, changing colors as indicated.

Rnd 6: With MC, knit, inc'ing 44 (48, 56, 68, 72) sts evenly around – 156 (168, 184, 204, 216) sts.

Rnds 7-13: Work Rnds 7-13 of Yoke chart.

Rnd 14: With MC, knit, inc'ing 42 (48, 56, 60, 72) sts evenly around – 198 (216, 240, 264, 288) sts.

Rnds 15-19: Work Rnds 15-19 of Yoke chart.

Rnd 20: With MC, knit, inc'ing 34 (48, 48, 56, 64) sts evenly around – 232 (264, 288, 320, 352) sts.

Rnds 21-33: Work Rnds 21-33 of Yoke chart.

Rnd 34: With MC, knit, incing 32 (36, 48, 52, 56) sts evenly around – 264 (300, 336, 372, 408) sts.

Rnds 35-43: Work Rnds 35-43 of Yoke chart.

Break all colors except MC. Knit 1 rnd. Beg with Rnd 1, work in Checks patt until piece meas 8¼ (8½, 9, 9¼, 9½)"" from beg of Yoke.

Separate Body and Sleeves

Rnd 1: Work in patt over 36 (42, 48, 54, 60) sts, place next 60 (66, 72, 78, 84) sts on holder for sleeve, cast on 6 sts for underarm, work in patt over 72 (84, 96, 108, 120) front sts, place next 60 (66, 72, 78, 84) sts on holder for sleeve, cast on 6 sts for underarm, work in patt over rem 36 (42, 48, 54, 60) sts – 156 (180, 204, 228, 252) sts. Work even in Checks patt until piece meas 14" from underarm. Switch to smaller ndl. Work in 2x2 Ribbing until piece meas 16" from underarm. Bind off all sts loosely.

Sleeves

Return sts to dpns. Work in MC only.

Rnd 1: Beg in center of underarm, pick up and knit 3 sts across first half of cast-on edge, work in patt over 60 (66, 72, 78, 84) sleeve sts, pick up and knit 3 sts across other half of cast-on edge – 72 sts. Work even in Checks patt for 3".

Note: Work decreases in pattern. Work k2tog or p2tog where appropriate.

Dec rnd: K1/P1, k2tog/p2tog, work in patt to last 3 sts, k2tog/p2tog, k1/p1 – 2 sts dec'd. Rep Dec rnd every 8 (6, 6, 6, 4) rnds, 5 (11, 7, 3, 18) more times, then rep Dec rnd every 6 (-, 4, 4, -) rnds, 5 (7, 12) times – 44 (48, 48, 52, 52) sts rem. Work even in patt until sleeve meas 15½" from underarm. Work Rnds 1-5 of Yoke chart. With MC, knit 1 rnd. Switch to smaller dpns. With MC, work in 2x2 Ribbing until sleeve meas 18" from underarm. Bind off all sts loosely.

FINISHING

Weave in ends and block.

HAT INSTRUCTION

BRIM

With MC and smaller ndl, cast on 92 sts. Work in 2x2 Ribbing until piece meas 2".

Main Hat

Switch to larger ndl

Inc rnd: Knit, inc'ing 16 sts evenly around – 108 sts.

Knit. Relax. Smile. Repeat!

2015 © Universal Yarn, Inc.

All rights reserved.

www.universalyarn.com

This pattern may not be reproduced for business, trade or sale.

Work Rows 1-30 of of Hat chart. Break all colors except MC. Work even in St st until piece meas 8" from cast-on edge.

Shape Crown

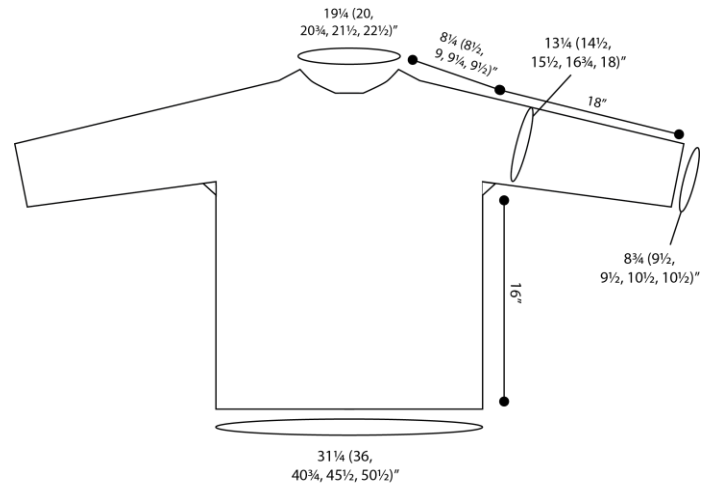
Set-up rnd: * K18, pm; rep from * to end.

Dec rnd: * Knit to 2 sts before m, k2tog; rep from * to end – 6 sts dec'd, 102 sts rem.

Rep Dec rnd every rnd, 15 more times – 12 sts rem. Break yarn, leaving an 8" tail. Pass tail through rem live sts, fasten off, pull taut.

FINISHING

Weave in ends and block. Make a 2 ½" pom pom using MC. Sew to top of hat.



Abbreviations

circ	circular
cont	continue
dec('d)	decrease(d)
dpn(s)	double pointed needle(s)
inc('d)	increase(d)
k	knit
k2tog	knit 2 stitches together (1 st dec'd)
knwise	knitwise
m	marker
m1	make one stitch
meas	measures
ndl	needle
patt	pattern
p	purl
pm	place marker
p2tog	purl 2 sts together (1 st dec'd)
rem	remain(ing)
rep	repeat
rnd	round
RS	right side
ssk	slip next 2 sts individually knitwise, slip them back to left needle in this position, knit them together through the back loops (1 st dec'd)
st(s)	stitch(es)
St st	Stockinette stitch (knit on RS rows, purl on WS rows; in the rnd, knit every rnd)
tog	together
WS	wrong side

Knit. Relax. Smile. Repeat!

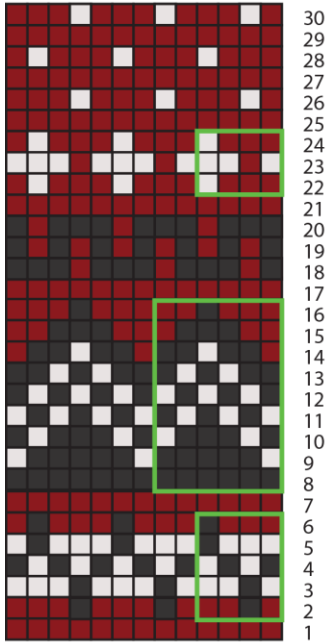
2015 © Universal Yarn, Inc.

All rights reserved.

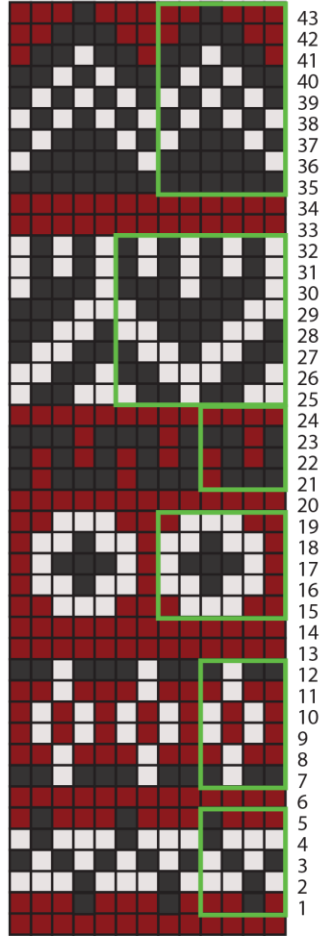
www.universalyarn.com

This pattern may not be reproduced for business, trade or sale.

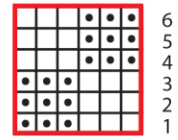
Hat



Yoke



Checks



Key

- knit with MC
- knit with CC1
- knit with CC2
- purl with CC2
- pattern repeat

Knit, Relax, Smile, Repeat!

2015 © Universal Yarn, Inc.

All rights reserved.

www.universalyarn.com

This pattern may not be reproduced for business, trade or sale.