



## Pattern Collection: Accessories



### Arum Shawl

Designed by Rachel Brockman

### SIZES

One Size

### FINISHED MEASUREMENTS

**Width (at cast-on edge):** 25½"

**Length:** 67"

### MATERIALS

**Fibra Natura Kingston Tweed** (50% wool, 25% alpaca, 25% mixed fiber; 50g/194 yds)

- 106 Olivine – 3 skeins

**Needles:** US Size 7 (4.5 mm) 16" circular or longer *or size needed to obtain gauge*

**Notions:** Tapestry needle, stitch markers

### GAUGE

20 sts x 24 rows = 4" in Lace patt

**Save time check your gauge.**

*Knit. Relax. Smile. Repeat!*

2019 © Universal Yarn, Inc.

All rights reserved.

[www.universalyarn.com](http://www.universalyarn.com)

This pattern may not be reproduced for business, trade or sale.

## PATTERN NOTES

Arum is a lacy, asymmetrical shawl inspired by the arrow-shaped leaves of the arum family of plants. These flowering plants, sometimes called arum lilies, feature beautiful flowers that come in a variety of colors. Warm, yet lightweight and airy, this shawl is optimal for mildly cool days. Kingston Tweed adds a touch of rustic texture.

This shawl is knit flat from the bottom up. After stitches are cast on and the pattern is established, stitches are gradually decreased ending with just two stitches. When working decreases in lace, maintain stitches in pattern as established. If there are not enough stitches to work decreases and corresponding increases in the pattern stitch, work these extra stitches in Stockinette or Reverse Stockinette instead (*i.e. knit the knits and purl the purls*).

## STITCH GUIDE

### Lace

*(multiple of 23 sts)*

**Row 1 (RS):** \* P1, yo, ssk, k3, k2tog, k3, yo, k1, yo, k3, ssk, k3, k2tog, yo, p1; rep from \* to end.

**Row 2 (WS):** \* K2, p19, k2; rep from \* to end.

**Row 3:** \* P2, yo, ssk, k1, k2tog, k3, yo, k1, p1, k1, yo, k3, ssk, k1, k2tog, yo, p2; rep from \* to end.

**Row 4:** \* K3, p8, k1, p8, k3; rep from \* to end.

**Row 5:** \* P3, yo, sl 2-k1-p2sso, k3, yo, k1, p3, k1, yo, k3, sl 2-k1-p2sso, yo, p3; rep from \* to end.

**Row 6:** \* K4, p6, k3, p6, k4; rep from \* to end.

**Row 7:** \* P3, k2tog, k3, yo, k1, p5, k1, yo, k3, ssk, p3; rep from \* to end.

**Row 8:** \* K3, p6, k5, p6, k3; rep from \* to end.

**Row 9:** \* P2, k2tog, k3, yo, k1, p7, k1, yo, k3, ssk, p2; rep from \* to end.

**Row 10:** \* K2, p6, k7, p6, k2; rep from \* to end.

**Row 11:** \* P1, k2tog, k3, yo, k1, yo, ssk, p5, k2tog, yo, k1, yo, k3, ssk, p1; rep from \* to end.

**Row 12:** \* K1, p8, k5, p8, k1; rep from \* to end.

**Row 13:** \* P1, ssk, k2, yo, k3, yo, ssk, p3, k2tog, yo, k3, yo, k2, k2tog, p1; rep from \* to end.

**Row 14:** \* K1, p9, k3, p9, k1; rep from \* to end.

**Row 15:** \* P1, ssk, k1, yo, k5, yo, ssk, p1, k2tog, yo, k5, yo, k1, k2tog, p1; rep from \* to end.

**Row 16:** \* K1, p21, k1; rep from \* to end.

**Row 17:** P1, ssk, yo, k7, yo, sl 2-k1-p2sso, yo, k7, yo, k2tog, p1; rep from \* to end.

**Row 18:** Rep Row 16.

Rep Rows 1-18 for patt.

## Seed

*(multiple of 2 sts)*

**Row 1 (RS):** \* K1, p1; rep from \* to end

**Row 2 (WS):** \* P1, k1; rep from \* to end

Rep Rows 1-2 for patt.

## SHAWL

### Bottom Border

Cast on 102 sts.

**Row 1 (RS):** K1, work in Seed patt to last st, k1.

**Row 2 (WS):** K1, work in Seed patt to last st, k1.

Rep Rows 1-2, 1 more time, then rep Row 1, 1 time.

### Establish Pattern

**Set-up Row (WS):** K1, work in Seed patt over 4 sts, pm, work in Seed patt to last 5 sts, pm, work in Seed patt over 4 sts, k1.

**Row 1 (RS):** Cont as est'd to m, sl m, [work Row 1 of Lace patt] 4 times, sl m, cont as est'd to end.

**Row 2:** Cont as est'd to m, sl m, [work Row 2 of Lace patt] 4 times, sl m, cont as est'd to end.

Rows 1-2 establish patt. Proceed to Shape Shawl section.

### Shape Shawl

*Note 1: When working in Lace patt in during this section, work through Row 18 of patt, then continuously rep Rows 1-18.*

*Note 2: When working decreases in lace, maintain stitches in pattern as established. If there are not enough stitches to work decreases and corresponding increases in the pattern stitch, work these extra stitches in St or rev St instead (*i.e. knit the knits and purl the purls*).*

**Dec Row (RS):** Cont as est'd to m, sl m, cont as est'd to 2 sts bef m, ssp, sl m, cont as est'd to end – 1 st dec'd.

Rep Dec Row every 4 rows, 90 more times – 90 sts dec'd, 11 sts rem. Work a WS row even, removing markers as you come to them.

*Knit. Relax. Smile. Repeat!*

2019 © Universal Yarn, Inc.

All rights reserved.

[www.universalyarn.com](http://www.universalyarn.com)

This pattern may not be reproduced for business, trade or sale.

## Shape Tip

*Note: This section is also charted for your convenience.*

**Row 1 (RS):** K2, p1, k1, ssp, [k1, p1] 2 times, k1 – 1 st dec'd, 10 sts rem.

**Row 2 (WS):** [K1, p1] 2 times, k3, p1, k2.

**Row 3:** K2, [p1, k1] 4 times.

**Row 4:** Rep Row 2.

**Row 5:** K2, p1, ssp, [k1, p1] 2 times, k1 – 1 st dec'd, 9 sts rem.

**Row 6:** [K1, p1] 2 times, k2, p1, k2.

**Row 7:** K2, p2, [k1, p1] 2 times, k1.

**Row 8:** Rep Row 6.

**Row 9:** K2, ssp, [k1, p1] 2 times, k1 – 1 st dec'd, 8 sts rem.

**Row 10:** [K1, p1] 2 times, k4.

**Row 11:** K2, [p1, k1] 3 times.

**Row 12:** Rep Row 10.

**Row 13:** K1, ssp, [k1, p1] 2 times, k1 – 1 st dec'd, 7 sts rem.

**Row 14:** [K1, p1] 2 times, k3.

**Row 15:** [K1, p1] 3 times, k1.

**Row 16:** Rep Row 14.

**Row 17:** Ssk, [k1, p1] 2 times, k1 – 1 st dec'd, 6 sts rem.

**Row 18:** [K1, p1] 2 times, k2.

**Row 19:** K2, [p1, k1] 2 times.

**Row 20:** Rep Row 18.

**Row 21:** Ssk, [p1, k1] 2 times – 1 st dec'd, 5 sts rem.

**Row 22:** [K1, p1] 2 times, k1.

**Row 23:** [K1, p1] 2 times, k1.

**Row 24:** Rep Row 22.

**Row 25:** Ssk, k1, p1, k1 – 1 st dec'd, 4 sts rem.

**Row 26:** K1, p1, k2.

**Row 27:** K2, p1, k1.

**Row 28:** Rep Row 26.

**Row 29:** Ssk, p1, k1 – 1 st dec'd, 3 sts rem.

**Rows 30-32:** K1, p1, k1.

**Row 33:** Ssk, k1 – 1 st dec'd, 2 sts rem.

**Row 34:** Bind off rem sts.

## FINISHING

Weave in ends but do not trim. Wet or steam block, stretching to enhance lace. Once piece is fully dry, trim ends close to work.

## Abbreviations

<b>bef</b>	before
<b>cont</b>	continue
<b>dec('d)</b>	decrease(d)
<b>est'd</b>	established
<b>k</b>	knit
<b>k2tog</b>	knit 2 stitches together (1 st dec'd)
<b>m</b>	marker
<b>ndl</b>	needle
<b>p</b>	purl
<b>patt</b>	pattern
<b>pm</b>	place marker
<b>psso</b>	pass slipped stitch(es) over
<b>rem</b>	remain(ing)
<b>rep</b>	repeat
<b>rev St st</b>	reverse Stockinette stitch (purl on RS rows, knit on WS rows; in the rnd, purl every rnd)
<b>RS</b>	right side
<b>sl</b>	slip
<b>ssk</b>	slip next 2 sts individually knitwise, slip them back to left needle in this position, knit them together through the back loops (1 st dec'd)
<b>ssp</b>	slip next 2 sts individually knitwise, slip them back to left needle in this position, purl them together through the back loops (1 st dec'd)
<b>St st</b>	Stockinette stitch (knit on RS rows, purl on WS rows; in the rnd, knit every rnd)
<b>st(s)</b>	stitch(es)
<b>WS</b>	wrong side
<b>yo</b>	yarn over

*Knit. Relax. Smile. Repeat!*

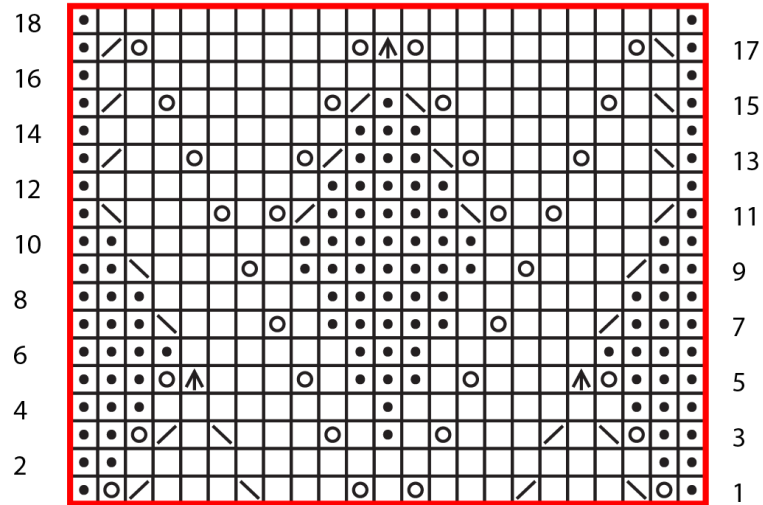
2019 © Universal Yarn, Inc.

All rights reserved.

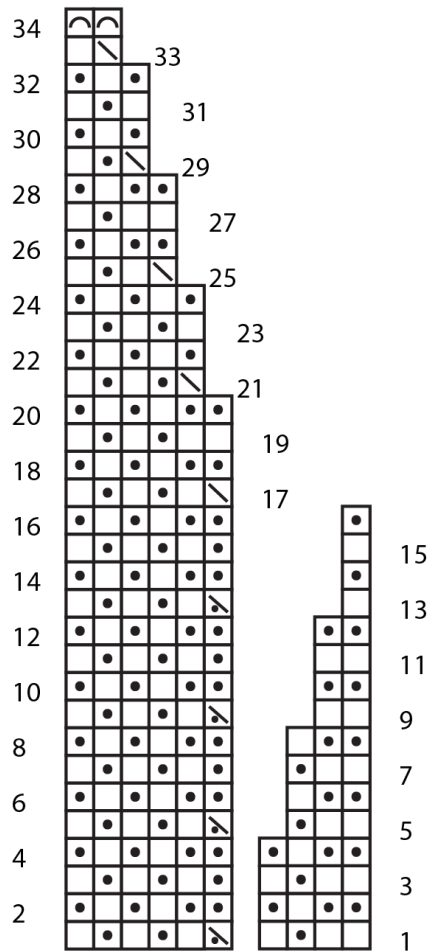
[www.universalyarn.com](http://www.universalyarn.com)

This pattern may not be reproduced for business, trade or sale.

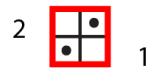
## Lace













## Shape Tip



## Seed



## Key

-  pattern repeat
-  indicates marker
-  knit on RS, purl on WS
-  purl on RS, knit on WS
-  yo
-  ssk
-  k2tog
-  sl 2-k1-p2sso
-  ssp
-  bind off

*Knit. Relax. Smile. Repeat!*

2019 © Universal Yarn, Inc.

All rights reserved.

[www.universalyarn.com](http://www.universalyarn.com)

This pattern may not be reproduced for business, trade or sale.