



## Pattern Collection: Women



### **Aria Cardigan**

Designed by Universal Design Team

### **SIZES**

Extra Small (Small, Medium, Large, 1X, 2X)  
Shown in Small size modeled with 4"  
positive ease

### **FINISHED MEASUREMENTS**

**Bust:** 33½ (38½, 41½, 46½, 49½, 54½)"

### **MATERIALS**

**Universal Yarn Universe** (42% linen, 41%  
cotton, 9% glitter, 8% polyamide;  
50g/246 yds)

- 10-04 Silk – 7 (8, 9, 10, 11, 12)  
skeins

**Needles:** US Size 4 (3.5 mm) straight,  
40" circular (or longer) *or size needed to  
obtain gauge*

US Size 5 (3.75 mm) 16" circular (for  
neck edging)

**Notions:** Tapestry needle, stitch holders

### **GAUGE**

24 sts x 32 rows = 4" in Diamonds patt  
1 rep of Edging = 2 ½" wide at widest  
point x 1½" tall

**Save time, check your gauge.**

*Knit. Relax. Smile. Repeat!*

2017 © Universal Yarn, Inc.

All rights reserved.

[www.universalyarn.com](http://www.universalyarn.com)

This pattern may not be reproduced for business, trade or sale.

## PATTERN NOTES

This dazzling cardigan is knit from the bottom up in pieces and seamed. The edging is worked as a knit-on trim. Stitches are picked up along sleeve cuffs and around front opening, and the edging is joined to the sweater at the end of every right side row.

## STITCH GUIDE

### Diamonds

*(multiple of 8 sts + 4)*

**Row 1 (RS):** K1, p1, \* p2, k2tog, [yo] 2 times, ssk, p2; rep from \* to last 2 sts, p1, k1.

**Row 2 (WS):** P1, k1, \* k2, p1, [p1, p1 tbl] into double yo, p1, k2; rep from \* to last 8 sts, k1, p1.

**Row 3:** K1, p1, \* p1, k2tog, yo, k2, yo, ssk, p1; rep from \* to last 2 sts, p1, k1.

**Row 4:** P1, k1, \* k1, p6, k1; rep from \* to last 2 sts, k1, p1.

**Row 5:** K1, p1, \* [k2tog, yo] 3 times, ssk; rep from \* to last 2 sts, p1, k1 – 1 st dec'd each rep.

**Row 6:** P1, k1, \* p7; rep from \* to last 2 sts, k1, p1.

**Row 7:** K1, p1, \* yo, ssk, yo, k2tog, k1, yo, k2tog, yo; rep from \* to last 2 sts, p1, k1 – 1 st inc'd each rep, original st count restored.

**Row 8:** P1, k1, \* k1 tbl, p6, k1; rep from \* to last 2 sts, k1, p1.

**Row 9:** K1, p1, \* p1, yo, ssk, k2, k2tog, yo, p1; rep from \* to last 2 sts, p1, k1.

**Row 10:** P1, k1, \* k2, p4, k2; rep from \* to last 2 sts, k1, p1.

**Row 11:** K1, p1, \* p2, yo, ssk, k2tog, yo, p2; rep from \* to last 2 sts, p1, k1.

**Row 12:** P1, k1, \* k3, p2, k3; rep from \* to last 2 sts, k1, p1.

Rep Rows 1-12 for patt.

### Edging

*(begins with 12 sts)*

**Row 1 (RS):** K2, [yo, k2tog] 2 times, yo, k2, yo, p2tog, k1, k2 tbl – 13 sts.

**Row 2 (WS):** K2, yo, p2tog, k9.

**Row 3:** K2, [yo, k2tog] 2 times, yo, k3, yo, p2tog, k2tog tbl – 14 sts.

**Row 4:** K2, yo, p2tog, k10.

**Row 5:** K2, [yo, k2tog] 2 times, yo, k4, yo, p2tog, k1, k2tog tbl – 15 sts.

**Row 6:** K2, yo, p2tog, k11.

**Row 7:** K2, [yo, k2tog] 2 times, yo, k5, yo, p2tog, k1, k2tog tbl – 16 sts.

**Row 8:** K2, yo, p2tog, k12.

**Row 9:** Bind off 4 sts, k8, yo, p2tog, k1, k2tog tbl – 12 sts rem.

**Row 10:** K2, yo, p2tog, k8.

Rep Rows 1-10 for patt.

## BACK

With straight ndls, cast on 100 (116, 124, 140, 148, 164) sts. Work Row 12 of Diamonds patt, then rep Rows 1-12 of patt until piece meas 22½ (22½, 22, 22, 21½, 21)" from cast-on edge, ending with WS row. Patt will be repeated 12 (14, 15, 17, 18, 20) times across each row.

### Shape Armholes

Bind off 8 (10, 11, 10, 11, 13) sts at beg of next 2 rows – 84 (96, 102, 120, 126, 138) sts rem. Work even in patt until Armholes meas 6 (6½, 7, 7½, 8, 8½)" from bind-off, ending with WS row.

**Next row (RS):** Bind off 21 (26, 29, 37, 40, 45) shoulder sts, knit across 42 (44, 44, 46, 46, 48) Neck sts, bind off rem 21 (26, 29, 37, 40, 45) shoulder sts. Place neck sts on holder.

## LEFT FRONT

With straight ndls, cast on 68 (76, 84, 92, 100, 108) sts. Work Row 12 of Diamonds patt, then rep Rows 1-12 of patt until piece meas 8" from cast-on edge, ending with WS row. Patt will be repeated 8 (9, 10, 11, 12, 13) times across each row.

### Neck Shaping

**Dec row (RS):** Work in patt to last 3 sts, p2tog, k1 – 1 st dec'd. Rep Dec row every 6 (6, 4, 4, 4, 4) rows, 3 (3, 39, 40, 36, 35) more times, then rep Dec row every 4 (4, 2, 2, 2, 2) rows, 35 (36, 4, 4, 12, 14) times – 21 (26, 29, 37, 40, 45) sts rem. *At the same time*, when piece meas 22½ (22½, 22, 22, 21½, 21)" from cast-on edge, proceed to next section.

### Shape Armhole

Bind off 8 (10, 11, 10, 11, 13) sts at beg of next RS row. After all decs are complete, work even, if

*Knit. Relax. Smile. Repeat!*

2017 © Universal Yarn, Inc.

All rights reserved.

[www.universalyarn.com](http://www.universalyarn.com)

This pattern may not be reproduced for business, trade or sale.

necessary until Armholes meas 6 (6½, 7, 7½, 8, 8½)” ending with WS row. Bind off all sts.

### RIGHT FRONT

With straight ndls, cast on 68 (76, 84, 92, 100, 108) sts. Work Row 12 of Diamonds patt, then rep Rows 1-12 of patt until piece meas 8” from cast-on edge, ending with WS row. Patt will be repeated 8 (9, 10, 11, 12, 13) times across each row.

### Neck Shaping

**Dec row (RS):** K1, p2tog, work in patt to end – 1 st dec’d. Rep Dec row every 6 (6, 4, 4, 4, 4) rows, 3 (3, 39, 40, 36, 35) more times, then rep Dec row every 4 (4, 2, 2, 2, 2) rows, 35 (36, 4, 4, 12, 14) times – 21 (26, 29, 37, 40, 45) sts rem.

*At the same time*, when piece meas 22½ (22½, 22, 22, 21½, 21)” from cast-on edge, proceed to next section.

### Shape Armhole

Bind off 8 (10, 11, 10, 11, 13) sts at beg of next WS row. After all decs are complete, work even, if necessary until Armholes meas 6 (6½, 7, 7½, 8, 8½)” ending with WS row. Bind off all sts.

### SLEEVES

With straight ndls, cast on 52 (52, 52, 60, 60, 60) sts. Work Row 12 of Diamonds patt, then work Rows 1-4 of patt.

**Inc row (RS):** K1, m1, work in patt to last st, m1, k1 – 2 sts inc’d. Maintaining inc’d sts in patt, rep Inc row every 10 (8, 6, 6, 6, 4) rows, 1 (4, 3, 1, 11, 2) more time(s), then rep Inc row every 8 (6, 4, 4, 4, 2) rows, 12 (10, 8, 8, 8, 6) times – 72 (78, 84, 90, 96, 102) sts. Work even in patt until Sleeve meas 17” from cast-on edge, ending with WS row. Bind off all sts.

### FINISHING

Block pieces to finished measurements.

### Sleeve Edging

With circ ndl, cast on 12 sts, pick up and knit 30 (30, 30, 35, 35, 35) sts along cast-on edge of Sleeve. Break yarn, slide sts to other end of ndl. Rep Rows 1-10 of Edging patt, 6 (6, 6, 7, 7, 7) times, joining Edging to picked up sts at the end of every RS row. Bind off rem 12 Edging sts.

Sew shoulder seams. Sew center bind-off edge of Sleeve to shoulder seam and sew. Sew Sleeve and side seams.

### Front Edging

With circ ndl, cast on 12 sts, pick up and knit 210 (215, 215, 220, 220, 220) sts evenly around front opening. Break yarn, slide sts to other end of ndl. Rep Rows 1-10 of Edging patt, 42 (43, 43, 44, 44, 44) times, joining Edging to picked up sts at the end of every RS row. Bind off rem 12 Edging sts. Weave in ends. Block Edgings by pinning out points to blocking board and steaming.

### Abbreviations

<b>beg</b>	begin(ning)
<b>circ</b>	circular
<b>cont</b>	continue
<b>dec('d)</b>	decrease(d)
<b>inc('d)</b>	increase(d)
<b>k</b>	knit
<b>k2tog</b>	knit 2 stitches together (1 st dec'd)
<b>m1</b>	insert left needle from front to back under horizontal strand of yarn lying between st just worked and next st, knit or purl this st through the back loop (1 st inc'd)
<b>meas</b>	measures
<b>ndl</b>	needle
<b>patt</b>	pattern
<b>p</b>	purl
<b>p2tog</b>	purl 2 sts together (1 st dec'd)
<b>rem</b>	remain(ing)
<b>rep</b>	repeat
<b>RS</b>	right side
<b>ssk</b>	slip next 2 sts individually knitwise, slip them back to left needle in this position, knit them together through the back loops (1 st dec'd)
<b>st(s)</b>	stitch(es)
<b>tbl</b>	through the back loop(s)
<b>tog</b>	together
<b>WS</b>	wrong side
<b>yo</b>	yarn over

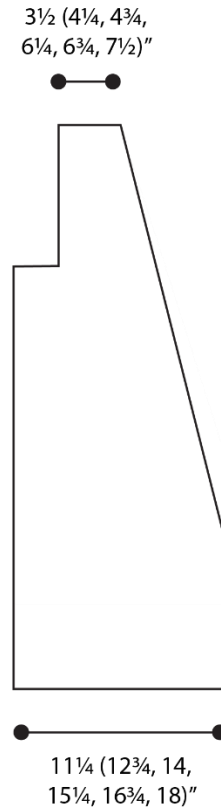
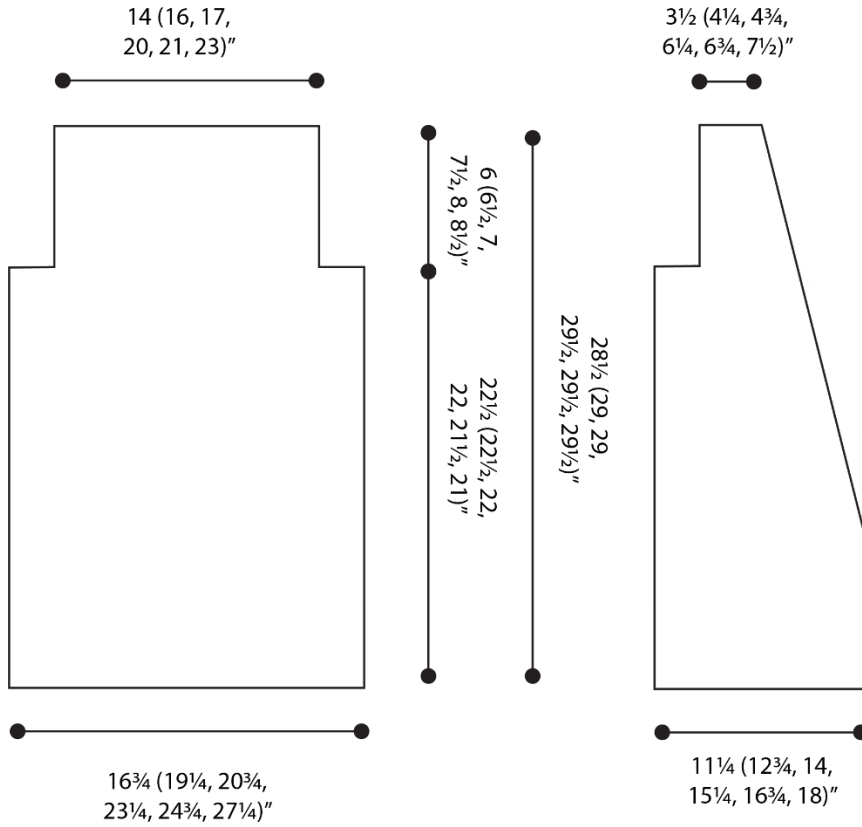
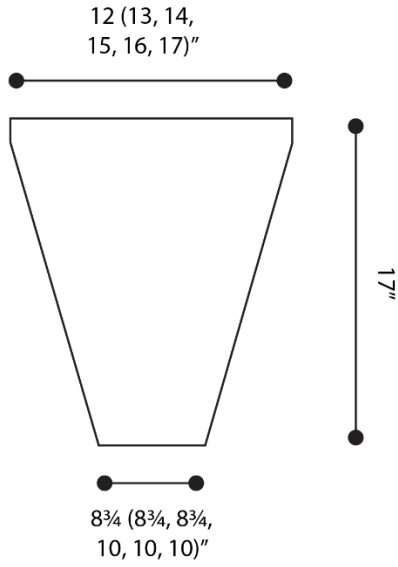
*Knit. Relax. Smile. Repeat!*

2017 © Universal Yarn, Inc.

All rights reserved.

[www.universalyarn.com](http://www.universalyarn.com)

This pattern may not be reproduced for business, trade or sale.



*Knit. Relax. Smile. Repeat!*

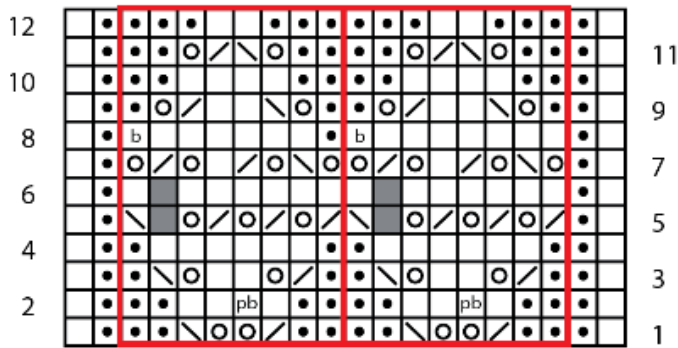
2017 © Universal Yarn, Inc.

All rights reserved.

[www.universalyarn.com](http://www.universalyarn.com)

This pattern may not be reproduced for business, trade or sale.

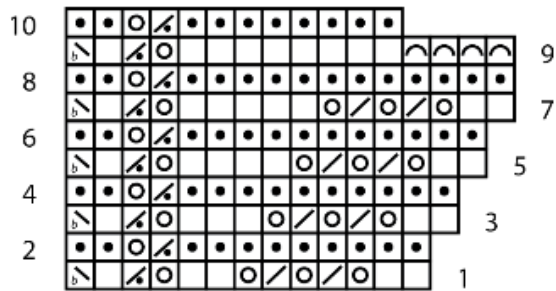
## Diamonds



## Key

- knit on RS, purl on WS
- purl on RS, knit on WS
- / k2tog
- \ ssk
- / p2tog
- / k2tog tbl
- yo
- pb p1 tbl
- b k1 tbl
- ⌋ bind off 1 st
- no stitch
- patt rep

## Edging



*Knit. Relax. Smile. Repeat!*

2017 © Universal Yarn, Inc.

All rights reserved.

[www.universalyarn.com](http://www.universalyarn.com)

This pattern may not be reproduced for business, trade or sale.