



## Pattern Collection: Children



### Argyle Junior Vest

Designed by Universal Yarn Design Team

#### SIZES

6-12 mo (1-2 yr, 2-4 yr, 4-6 yr, 6-8 yr, 8-10 yr)

#### FINISHED MEASUREMENTS

**Chest:** 18¾ (21¼, 23½, 25¼, 27½, 29¼)''

**Length:** 11¾ (13, 14¼, 15½, 17, 18½)''

#### MATERIALS

Universal Yarn *Deluxe DK Tweed Superwash* (90% superwash wool, 7% acrylic, 3% viscose; 100g/284 yds)

- 403 Hazelnut (MC) – 1 (1, 1, 2, 2, 2) balls
- 408 Navy (CC1) – 1 ball, all sizes
- 410 Porcelain (CC2) – 1 ball, all sizes

**Needles:** US Size 6 (4 mm) straight *or size needed to obtain gauge*

US Size 4 (3.5 mm) straight, set of dpns

**Notions:** Tapestry needle, stitch markers

#### GAUGE

20 sts x 26 rows = 4'' in St st using larger ndl

**Save time, check your gauge**

*Knit, Relax, Smile, Repeat!*

2016 © Universal Yarn, Inc.

All rights reserved.

[www.universalyarn.com](http://www.universalyarn.com)

This pattern may not be reproduced for business, trade or sale.

## PATTERN NOTES

This vest is worked in pieces and seamed.

The argyle motif on the chest is worked using the intarsia method. Use a separate length of yarn for each section of color.

## STITCH GUIDE

### K1, P1 Ribbing, worked flat

(*odd number of sts*)

**Row 1 (RS):** \* K1, p1; rep from \* to last st, k1.

**Row 2 (WS):** \* P1, k1; rep from \* to end.

Rep Rows 1-2 for patt.

### K1, P1 Ribbing, worked in the round.

(*even number of sts*)

**Rnd 1:** \* K1, p1; rep from \* to end.

Rep Rnd 1 for patt.

## VEST

### Back

With CC1 and smaller ndl, cast on 47 (53, 59, 63, 69, 73) sts.

### Hem

With CC1, work 2 rows in K1, P1 Ribbing.

With MC, work 2 rows in K1, P1 Ribbing.

With CC2, work 2 rows in K1, P1 Ribbing.

With MC, work 2 rows in K1, P1 Ribbing.

With CC1, work 2 rows in K1, P1 Ribbing.

Break all colors except MC.

### Main Back

Switch to larger ndl. Work in St st until piece meas 7 (8, 9, 10, 11, 12)" from cast-on edge, ending with WS row.

### Shape Armholes

Bind off 2 (2, 2, 2, 3, 3) sts at beg of next 2 rows – 43 (49, 55, 59, 63, 67) sts rem.

**Dec row (RS):** K1, k2tog, work in patt to last 3 sts, ssk, k1 – 2 sts dec'd. Work a WS row even. Rep Dec row – (-, -, 1, 1, 1) more time – 41 (47, 53, 55, 59, 63) sts rem. Work even in St st until Armholes meas 4¾ (5, 5¼, 5½, 6, 6½)" ending with WS row. Bind off all sts.

## FRONT

Work as for Back until piece meas 5 (6, 7, 8, 9, 10)" from cast-on edge, ending with WS row.

### Argyle Section

**Row 1 (RS):** K5 (8, 11, 13, 16, 18), pm, work Row 1 of Argyle chart over 37 sts, pm, knit to end.

**Row 2:** Purl to m, work Row 2 of Argyle chart to m, purl to end.

Cont in patt through Row 13 of chart. Remove markers. Purl 1 row.

### Shape Armholes

Bind off 2 (2, 2, 2, 3, 3) sts at beg of next 2 rows – 43 (49, 55, 59, 63, 67) sts rem.

**Dec row (RS):** K1, k2tog, work in patt to last 3 sts, ssk, k1 – 2 sts dec'd. Work a WS row even. Rep Dec row – (-, -, 1, 1, 1) more time – 41 (47, 53, 55, 59, 63) sts rem. Work even in St st until Armholes meas 1 (1, 1, 1, 1¼, 1½)" ending with WS row.

### Shape Neck

**Row 1 (RS):** K17 (20, 23, 24, 26, 28) Left Front sts, ssk, k1, place next (center) st on safety pin or removable marker, place next 20 (23, 26, 27, 29, 31) Right Front sts on holder.

Work 3 rows even in St st.

**Dec row (RS):** Knit to last 3 sts, ssk, k1 – 1 st dec'd. Rep Dec row every 4 rows, - (-, 1, 1, 1, -) more time, then rep Dec row every 2 rows, 9 (10, 9, 10, 11, 13) times – 9 (11, 14, 14, 15, 16) sts rem. Work even, if necessary, until Armholes meas 4¾ (5, 5¼, 5½, 6, 6½)" ending with WS row. Bind off all sts.

### Right Front

Return sts to ndl.

**Dec (RS):** K1, k2tog, knit Rep Dec row every 4 rows, 1 (1, 2, 2, 2, 1) more time(s), then rep Dec row every 2 rows, 9 (10, 9, 10, 11, 13) times – 9 (11, 14, 14, 15, 16) sts rem. Work even, if necessary, until Armholes meas 4¾ (5, 5¼, 5½, 6, 6½)" ending with WS row. Bind off all sts.

## FINISHING

Block pieces to finished measurements. Sew shoulder and side seams.

### Armhole Edging

With smaller dpns and CC1, pick up and knit 52 (54, 58, 60, 66, 72) sts evenly around Armhole. Join to work in the rnd. Work 4 rnds in K1, P1 Ribbing. Bind off all sts in patt.

### Neck Edging

With smaller dpns, pick up and knit 23 (25, 25, 27, 29, 31) sts along Back Neck, 22 (24, 26, 28, 30, 32) sts along Left Front Neck edge, knit center held st, place

*Knit. Relax. Smile. Repeat!*

2016 © Universal Yarn, Inc.

All rights reserved.

www.universalyarn.com

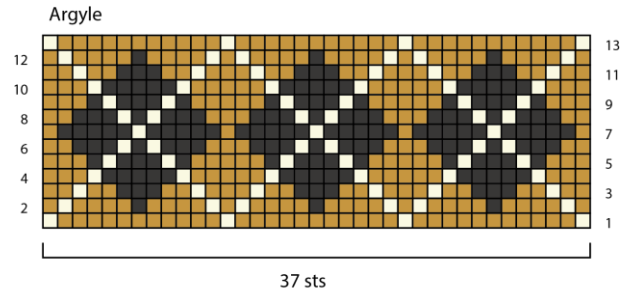
This pattern may not be reproduced for business, trade or sale.

removable marker on this st, pick up and knit 22 (24, 26, 28, 30, 32) sts along Right Front Neck Edge – 68 (74, 78, 84, 90, 96) sts. Join to work in the rnd.

**Rnd 1:** [P1, k1] to 1 st before marked st, sl2-k1-p2sso, work in rib to end – 2 sts dec'd.  
Rep Rnd 1, 3 more times. Bind off all sts in patt.  
Weave in ends.

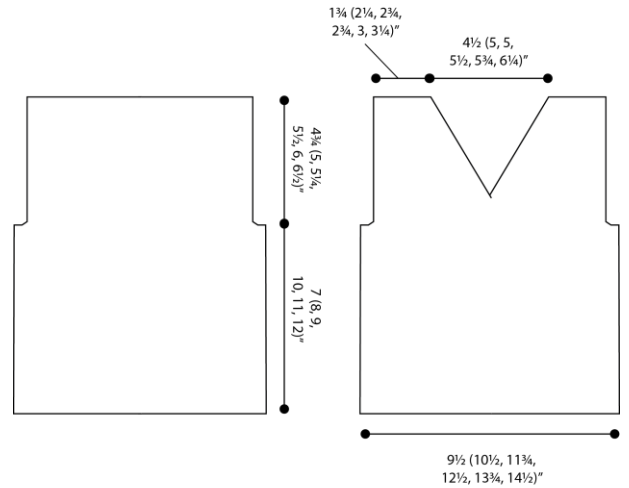
### Abbreviations

<b>CC</b>	contrast color
<b>circ</b>	circular
<b>cont</b>	continue
<b>dec('d)</b>	decrease(d)
<b>inc('d)</b>	increase(d)
<b>k</b>	knit
<b>k2tog</b>	knit 2 stitches together (1 st dec'd)
<b>m</b>	marker
<b>MC</b>	main color
<b>meas</b>	measures
<b>ndl</b>	needle
<b>patt</b>	pattern
<b>p</b>	purl
<b>pm</b>	place marker
<b>pssso</b>	pass slipped stitch(es) over
<b>rem</b>	remain(ing)
<b>rep</b>	repeat
<b>rnd</b>	round
<b>RS</b>	right side
<b>ssk</b>	slip next 2 sts individually knitwise, slip them back to left needle in this position, knit them together through the back loops (1 st dec'd)
<b>st(s)</b>	stitch(es)
<b>St st</b>	Stockinette stitch (knit on RS rows, purl on WS rows; in the rnd, knit every rnd)
<b>tog</b>	together
<b>WS</b>	wrong side



**Key**

- with MC knit on RS, purl on WS
- with CC1 knit on RS, purl on WS
- with CC2 knit on RS, purl on WS



*Knit. Relax. Smile. Repeat!*

2016 © Universal Yarn, Inc.

All rights reserved.

www.universalyarn.com

This pattern may not be reproduced for business, trade or sale.