



ARDENNE

STRIPED ASYMMETRICAL SHAWL



Ardenne Shawl

Designed by Rachel Brockman

DIFFICULTY

Easy

SIZES

One Size

FINISHED MEASUREMENTS

Width (at widest edge): 42"

Length: 62"

MATERIALS

Universal Yarn Noelle (29% polyester, 26% baby alpaca, 26% merino wool, 19% nylon; 50g/208 yds)

- 304 Calypso - 3 balls

Universal Yarn Universe (42% linen, 41% cotton, 9% glitter, 8% polyamide; 50g/246 yds)

- 10-01 Paper - 2 balls

Needle: US Size 9 (5.5 mm) 32" circular or longer (to accommodate large number of sts) *or size needed to obtain gauge*

US Size 8 (5 mm) 32" circular or longer (to accommodate large number of sts)

ARDENNE

Notions: Tapestry needle, stitch markers

GAUGE

16 sts x 26 rows = 4" in Stripe Sequence with larger ndl

Save time, check your gauge.

PATTERN NOTES

Special times of year call for things to wear that make you want to celebrate. Making an accessory for yourself or a loved one for these significant times can create a lasting memory with an heirloom to pass down. The Ardenne Shawl is a glittering beauty knit in our Noelle and Universe yarns. A simple stripe and eyelet pattern pairs perfectly with these indulgent yarns and makes an accessory begging to be worn to an event or even just a fun night out with friends.

This boomerang-shaped shawl is worked on the bias, beginning with the smallest point and increasing towards the widest edge. After all increases are complete, a lace edging is worked sideways across the live stitches of the widest edge.

When working the Stripe Sequence, do not break yarn at each color change. Instead, twist the strands of yarn around one another every right side row, taking care not to pull too tightly.

STITCH GUIDE

Stripe Sequence

(even number of sts)

Row 1 (RS): With MC, knit.

Row 2 (WS): With MC, purl.

Rows 3-4: Rep Rows 1-2.

Row 5: With CC, knit.

Row 6: With CC, purl.

Row 7: With MC, knit.

Row 8: With MC, * yo, k2tog; rep from * to end.

Rows 9-10: Rep Rows 5-6.

Rep Rows 1-10 for patt.

PATTERN BEGINS

SHAWL

With larger ndl and MC, cast on 4 sts.

Row 1 (RS): K3, yo, k1 – 1 st inc'd, 5 sts.

Row 2 (WS): K2, yo, k3 – 1 st inc'd, 6 sts.

Row 3: K3, yo, k3 – 1 st inc'd, 7 sts.

Row 4: K3, p1, yo, k3 – 1 st inc'd, 8 sts.

Row 5: K3, yo, k5 – 1 st inc'd, 9 sts.

Row 6: K3, p2tog, p1, yo, k3.

Row 7: K3, pm, yo, k3, pm, k3 – 1 st inc'd, 10 sts.

Row 8: Knit to m, sl m, p2tog, purl to m, yo, sl m, k3. Join CC, do not break MC.

Row 9: With CC, knit to m, sl m, yo, knit to m, sl m, k3 – 1 st inc'd, 11 sts.

Row 10: With CC, knit to m, sl m, p2tog, purl to m, yo, sl m, k3.

Row 11: With MC, k3, sl m, yo, knit to m, sl m, k3 – 1 st inc'd, 12 sts.

Row 12: Knit to m, sl m, p2tog, p1, yo, p2tog, p1, yo, sl m, k3.

Row 13: With CC, rep Row 9 – 1 st inc'd, 13 sts.

Row 14: With CC, rep Row 10.

ARDENNE

Row 15: With MC, knit to m, sl m, yo, knit to m, sl m, k3 – 1 st inc'd, 14 sts.

Row 16: With MC, knit to m, sl m, p2tog, purl to m, yo, sl m, k3.

Rows 17-18: Rep Rows 15-16 – 1 st inc'd, 15 sts.

Row 19: With CC, knit to m, sl m, yo, knit to m, sl m, k3 – 1 st inc'd, 16 sts.

Row 20: With CC, knit to m, sl m, p2tog, purl to m, yo, sl m, k3.

Row 21: With MC, rep Row 15 – 1 st inc'd, 17 sts.

Row 22: With MC, k3, sl m, p2tog, * yo, p2tog; rep from * to 1 st bef m, p1, yo, sl m, k3.

Rows 23-24: With CC, rep Rows 19-20 – 1 st inc'd, 18 sts.

Rows 25-28: With MC, rep Rows 15-18 – 2 sts inc'd, 20 sts.

Rows 29-30: With CC, rep Rows 19-20 – 1 st inc'd, 21 sts.

Row 31: With MC, rep Row 15 – 1 st inc'd, 22 sts.

Row 32: With MC, k3, sl m, p2tog, p1, * yo, p2tog; rep from * to 1 st bef m, p1, yo, sl m, k3.

Rows 33-34: With CC, rep Rows 19-20 – 1 st inc'd, 23 sts.

Rep Rows 15-34, 14 more times, then rep Rows 15-24, 1 more time – 145 sts inc'd, 168 sts. Break CC. Cont with MC only.

Next Row (RS): With MC, k3, sl m, yo, knit to end – 1 st inc'd, 169 sts. Using the backwards loop method, cast on 8 sts, turn work – 177 sts. Change to smaller ndl.

Edging

Set-up Row (WS): K7, pm, ssk – 1 edge st consumed.

Row 1 (RS): Sl 1 wyib, sl m, p1, knit to end.

Row 2: K7, sl m, ssk – 1 edge st consumed.

Row 3: Sl 1 wyib, sl m, p1, yo, S2KP2, yo, k1, yo, k2 – 1 st inc'd.

Row 4: K8, sl m, ssk – 1 edge st consumed.

Row 5: Sl 1 wyib, sl m, p1, k5, yo, k2 – 1 st inc'd.

Row 6: K9, sl m, ssk – 1 edge st consumed.

Row 7: Sl 1 wyib, sl m, p1, yo, S2KP2, yo, k3, yo, k2 – 1 st inc'd.

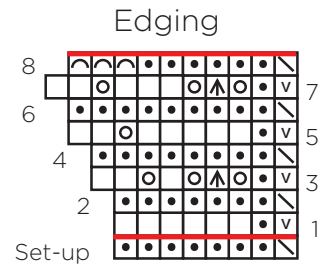
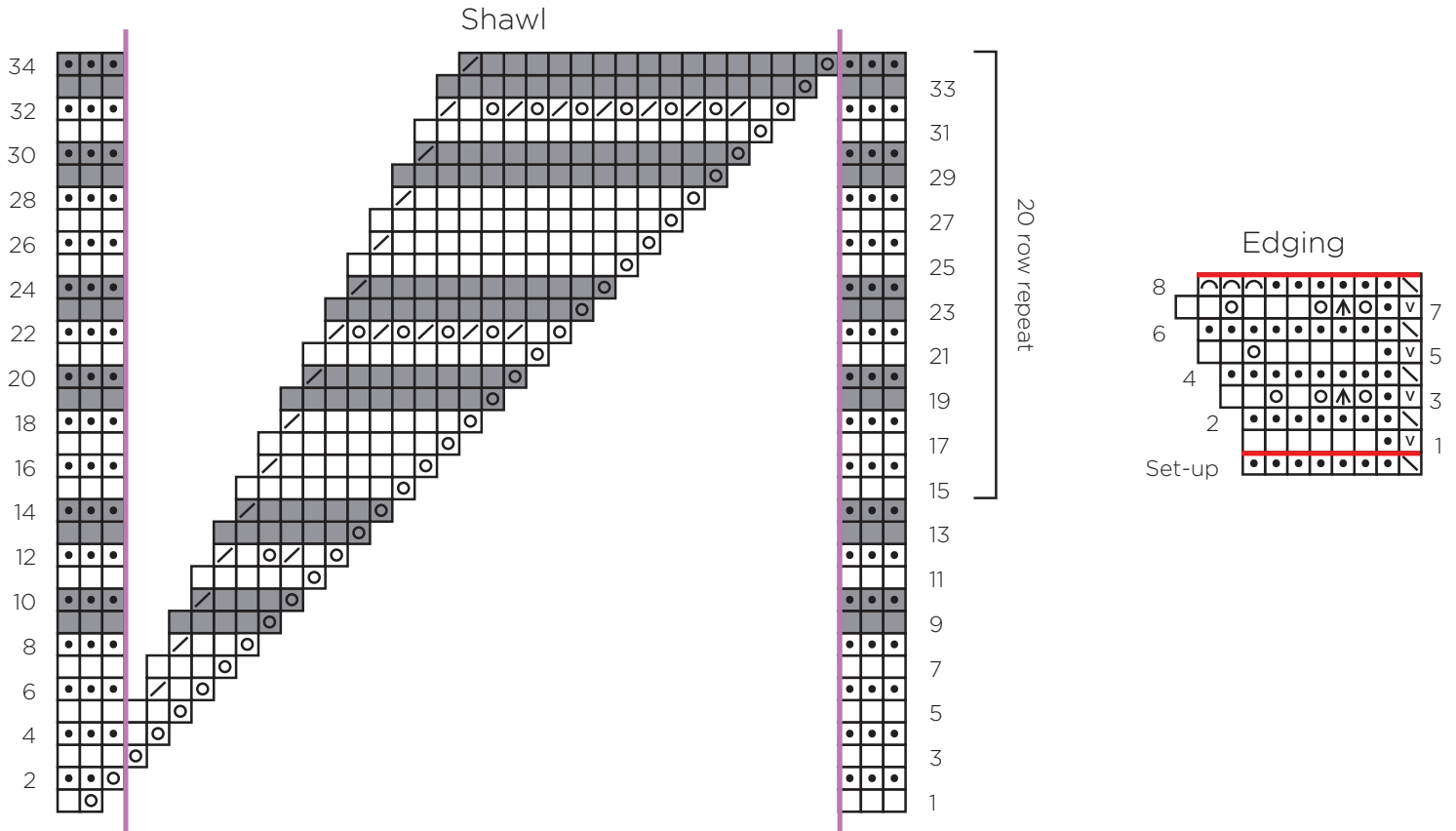
Row 8: Bind off 3, k6, sl m, ssk – 1 edge st consumed.

Rep Rows 1-8, 41 more times – 8 sts rem (from edging). Bind off all sts kwise.

FINISHING

Gently wash and block to finished measurements. Weave in ends.

ARDENNE



Key

- indicates marker
- pattern repeat
- with MC, knit on RS, purl on WS
- with MC, purl on RS, knit on WS
- with MC, yo
- with MC, k2tog, p2tog on WS
- with MC, ssk
- with MC, sl 1 wyib
- with MC, S2KP2
- with CC, knit on RS, purl on WS
- with CC, purl on RS, knit on WS
- with CC, yo
- with CC, k2tog, p2tog on WS



ABBREVIATIONS

approx	approximately		
bef	before		
beg	begin(ning)		
bor	beginning of round		
CC	contrast color		
ch	chain		
circ	circular		
cont	continue		
dec('d)	decrease(d)		
dpn(s)	double pointed needle(s)		
est'd	established		
Fhdc	Foundation half double cro- chet		
foll	follow		
FPdc	Front Post double crochet		
FPst(s)	Front Post stitch(es)		
FPtr	Front Post treble crochet		
garter st	knit every row		
hk	hook		
inc('d)	increase(d)		
k	knit		
k2tog	knit 2 stitches together (1 st dec'd)		
kfbf	knit into front, then back, then front again of next st (2 sts inc'd)		
LH	left hand		
lp(s)	loop(s)		
m	marker		
m1L	insert left needle from front to back under horizontal strand of yarn lying between st just worked and next st, knit or purl this st through the back loop (1 st inc'd)		
m1R	insert left needle from back to front under horizontal strand of yarn lying between st just worked and next st,		
			knit or purl this st through the front loop (1 st inc'd)
		MC	main color
		meas	measures
		ndl	needle
		ndl	needle
		p	purl
		p	purl
		p2tog	purl 2 sts together (1 st dec'd)
		patt	pattern
		pm	place marker
		pssso	pass slipped stitch(es) over
		pwise	purlwise
		rem	remain(ing)
		rep	repeat
		RH	right hand
		rnd	round
		RS	right side
		S2KP2	slip 2 stitches as if to knit 2 together, knit 1, pass 2 slipped stitches over knit stitch; centered double de- creases
		sc	single crochet
		sk	skip
		sl	slip
		sp	space(s)
		ssk	slip next 2 sts individually knitwise, slip them back to left needle in this position, knit them together through the back loops (1 st dec'd)
		St st	Stockinette stitch (knit on RS rows, purl on WS rows; in the rnd, knit every rnd)
		st(s)	stitch(es)
		WS	wrong side
		wyib	with yarn held in back
		yo	yarn over

NOELLE

Spun in Italy, **Noelle** blends luxurious baby alpaca and merino wool with polyester and nylon to create a shimmering, ethereal yarn perfect for cool weather. This yarn features a hollow core, making it exceptionally lightweight and lofty. Noelle has a soft haze, yet retains lovely stitch definition. Subtle color shifts give this yarn an additional element of interest.

26% Merino Wool
 26% Baby Alpaca
 29% Polyester
 19% Nylon

50g / 208 yds

Light/DK Weight

4 Shimmering Colors





DISTRIBUTION

Universal Yarn
5991 Caldwell Park Drive
Harrisburg, NC 28075
Tel: 877.864.9276
Fax: 704.454.1029
e-mail: patterns@universalyarn.com
www.universalyarn.com

CANADA

H.A. Kidd & Company
5 Northline Rd
Toronto, ON M4B 3P2
Tel: 800.387.1753
Fax: 416.364.4860
email: info1@hakidd.com
www.hakidd.com.com

TURKEY

Defne
DEMIRTAS ORGANIZE SANAYI BÖLGESİ
ZAMBAK SOKAK NO:3
OSMANGAZI/Bursa
Tel: 90.224.261.3347-48
Fax: 90.224.261.3332
e-mail: info@defneplikpazarlama.com

ACKNOWLEDGEMENTS

CREATIVE LEAD

Rachel Brockman

PHOTOGRAPHER

Salt Paper Studio

DESIGNERS

Rachel Brockman
Brittany Garber

STYLIST + HAIR/MAKEUP

Janis Lozano

TECHNICAL EDITORS

Aubrey Busek
Rachel Brockman
Ashley Jane McIntyre

MODEL

Bette Morrow

PROOFREADERS

Aubrey Busek
Heather Hill
Ashley Jane McIntyre

