



Pattern Collection: Accessory



Amaranth Hat

Designed by Rachel Brockman

DIFFICULTY

Easy

SIZES

Adult Medium

FINISHED MEASUREMENTS

Brim Circumference: 18¼"

Stretches to approx. 22"

Length: 9"

MATERIALS

Universal Yarn Wool Pop (50% bamboo, 35% superwash wool, 15% polyamide; 100 g/284 yds)

- 612 True Red – 1 skein

Needle: US Size 6 (4 mm) 16" circular and set of DPNs (or your preferred needle for knitting small circumferences) *or size needed to obtain gauge*

US Size 5 (3.75 mm) 16" circular

Notions: Tapestry needle, stitch markers, cable needle (cn)

GAUGE

26 sts x 29 rnds = 4" in Cable patt

Save time, check your gauge.

Knit. Relax. Smile. Repeat!

2021 © Universal Yarn, Inc.

All rights reserved.

www.universalyarn.com

This pattern may not be reproduced for business, trade or sale.

PATTERN NOTES

The Amaranth Hat is a textural beauty. The stretchy brim pattern shifts seamlessly into the cable pattern. The stitch definition of Wool Pop makes the cables in this pattern – well, pop! The mix of fibers in Wool Pop make this hat both cool and cozy, perfect for early Spring into chilly Autumn days.

This hat is knit in the round from the bottom up.

STITCH GUIDE

2x2 Left Cross (LC)

Slip 2 sts to cn and hold in front, k2 from left ndl, k2 from cn.

2x2 Right Cross (RC)

Slip 2 sts to cn and hold in back, k2 from left ndl, k2 from cn.

Cable

(multiple of 17 sts)

Rnd 1: * P2, k2, p1, k2, p2, 2x2 LC, 2x2 RC; rep from * to end.

Rnd 2: * P2, k2, p1, k2, p2, k8; rep from * to end.

Rnds 3-4: * P2, [k1, p1] 2 times, k1, p2, k8; rep from * to end.

Rnds 5-6: Rep Rnds 1-2.

Rnds 7-8: Rep Rnds 3-4.

Rnds 9-10: Rep Rnd 2.

Rnds 11-12: Rep Rnds 3-4.

Rep Rnds 1-12 for patt.

HAT

Brim

Note: This section is also charted for your convenience.

With smaller ndl, cast on 119 sts. PM and join to knit in the rnd, being careful not to twist.

Rnds 1-2: * P2, k2, p1, k2, p2, k2, p1, k2, p1, k2; rep from * to end.

Rnds 3-4: * P2, [k1, p1] 2 times, k1, p2, k2, [p1, k2] 2 times; rep from * to end.

Rep Rnds 1-4, 2 more times. Change to larger ndl.

Hat Body

Note: You may wish to place markers between each pattern repeat to help you stay on track.

Set-up Rnds 1-2: * P2, k2, p1, k2, p2, k8; rep from * to end.

Set-up Rnds 3-4: * P2, [k1, p1] 2 times, k1, p2, k8; rep from * to end.

Rnd 1: Work Rnd 1 of Cable patt to end. Patt will be repeated 7 times across each rnd.

Rnd 2: Work Rnd 2 of Cable patt to end.

Cont as est'd through Rnd 12 of patt, then rep Rnds 1-12 of patt, 1 more time, then rep Rnds 1-10 of patt, 1 more time.

Crown Shaping

Note 1: Change to DPNs or your preferred ndl for knitting small circumferences when there are too few sts to fit comfortably on 16" circ.

Note 2: This section is also charted for your convenience.

Rnd 1: * P2, k2tog, p1, ssk, p2, 2x2 LC, 2x2 RC; rep from * to end – 14 sts dec'd, 105 sts rem.

Rnd 2: * P2, k1, p1, k1, p2, k8; rep from * to end.

Rnd 3: * P2, S2KP2, p2, k8; rep from * to end – 14 sts dec'd, 91 sts rem.

Rnd 4: * P2, k1, p2, k8; rep from * to end.

Rnd 5: * P1, S2KP2, p1, 2x2 LC, 2x2 RC; rep from * to end – 14 sts dec'd, 77 sts rem.

Rnd 6: * P1, k1, p1, k8; rep from * to end.

Rnd 7: * P1, k1, p1, ssk, k4, k2tog; rep from * to end – 14 sts dec'd, 63 sts rem.

Rnd 8: * P1, k1, p1, k6; rep from * to end.

Rnd 9: * P1, k1, p1, ssk, k2, k2tog; rep from * to end – 14 sts dec'd, 49 sts rem.

Rnd 10: * P1, k1, p1, k4; rep from * to end.

Rnd 11: * P1, k1, p1, ssk, k2tog; rep from * to end – 14 sts dec'd, 35 sts rem.

Rnd 12: * P1, k1, p1, k2; rep from * to end.

Rnd 13: * S2KP2, k2; rep from * to end – 14 sts dec'd, 21 sts rem.

Rnd 14: Knit.

Rnd 15: * K1, k2tog; rep from * to end – 7 sts dec'd, 14 sts rem. Break yarn leaving approx. 8" tail. Thread yarn through rem live sts and pull taut to close.

FINISHING

Gently wash and block to finished measurements. Weave in ends.

Knit. Relax. Smile. Repeat!

2021 © Universal Yarn, Inc.

All rights reserved.

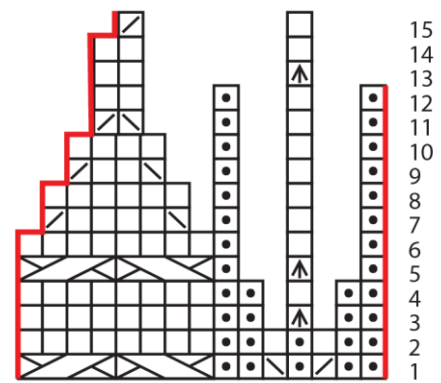
www.universalyarn.com

This pattern may not be reproduced for business, trade or sale.

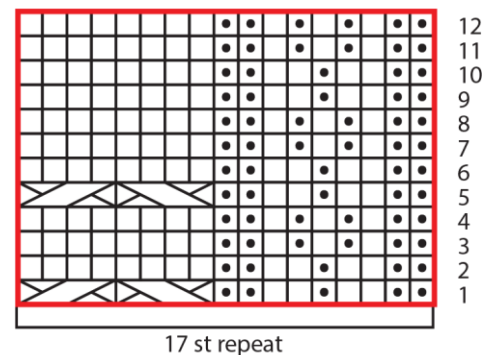
Abbreviations

circ	circular
cn	cable needle
cont	continue
dec('d)	decrease(d)
dpn(s)	double pointed needle(s)
est'd	established
k	knit
k2tog	knit 2 stitches together (1 st dec'd)
LC	left cross
m	marker
ndl	needle
p	purl
patt	pattern
pm	place marker
RC	right cross
rem	remain(ing)
rep	repeat
rnd	round
S2KP2	slip 2 stitches as if to knit 2 together, knit 1, pass 2 slipped stitches over knit stitch; centered double decreases
ssk	slip next 2 sts individually knitwise, slip them back to left needle in this position, knit them together through the back loops (1 st dec'd)
st(s)	stitch(es)

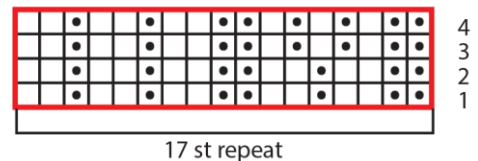
Crown Shaping



Cable



Brim



Key

	pattern repeat
	knit
	purl
	k2tog
	ssk
	S2KP2
	2x2 LC
	2x2 RC

Knit. Relax. Smile. Repeat!

2021 © Universal Yarn, Inc.

All rights reserved.

www.universalyarn.com

This pattern may not be reproduced for business, trade or sale.