



Absolute Zero



# Absolute Zero

Designed by Yonca Ozbelli

## SIZES

Extra Small (Small, Medium, Large, 1X, 2X, 3X, 4X)

Shown in Small size modeled with 4" of positive ease

## FINISHED MEASUREMENTS

**Bust:** 32 (36, 40, 44, 48, 52, 56, 60)"

**Length:** 24½ (25, 25½, 26, 26¼, 26½, 26¾, 27)"

## MATERIALS

**Universal Yarn Universe** (42% linen, 41% cotton, 9% glitter, 8% polyamide; 50g/246 yds)

- 10-09 Pottery – 4 (5, 5, 6, 6, 7, 7, 8) skeins

**Needle:** US Size 8 (5 mm) straight *or size needed to obtain gauge*

US Size 4 (3.5 mm) 32" circular, 16" circular (for Neck and Sleeve Edging) *or size needed to obtain gauge*

**Notions:** Stitch markers, stitch holders, tapestry needle, US Size H-8 (5 mm) crochet hook (for lower edging only)

## GAUGE

24 sts x 31 rows = 4" in St st using smaller ndl

15 sts x 30 rows = 4" in garter st using larger ndl

**Save time, check your gauge.**

## PATTERN NOTES

The name of this design foreshadows just how much complicated shaping goes into the body of this garment: none at all! The front and back peplum are knit flat in garter stitch. The two sets of stitches are then joined in the round, and the body is worked upward in the round in stockinette stitch. Want more or less length? Simply knit more or less of the peplum before joining.



## I-Cord Bind-Off

Cast on 3 sts to first st on left ndl using knitted cast-on. \* K2, k2tog tbl (1 st bound off), slip these 3 sts back to left ndl; rep from \* until all sts have been bound off. Bind off rem 3 I-Cord sts.

## BODY

### Lower Back

With larger ndl, cast on 96 (108, 120, 132, 144, 156, 168, 180) sts. Work even in garter st for 12". Place sts on holder.

### Lower Front

Work as for Back.

### Join Back and Front

**Rnd 1:** Working onto smaller ndl, knit across Front sts, pm for side, knit across Back sts, pm for side/beg of rnd

– 192 (216, 240, 264, 288, 312, 336, 360) sts. Work even in St st until piece meas 16½" from cast-on edge.

### Separate Front and Back

**Row 1 (RS):** Knit across Front sts to side m, remove m, cast on 10 sts for Sleeve, turn – 106 (118, 130, 142, 154, 166, 178, 190) sts. Place 96 (108, 120, 132, 144, 156, 168, 180) Back sts on holder.

**Row 2 (WS):** Purl to end, cast on 10 sts for Sleeve, turn – 116 (128, 140, 152, 164, 176, 188, 200) sts. Work even in St st until piece meas 3½ (4, 4½, 5, 5¼, 5½, 5¾, 6)" from Sleeve cast-on, ending with WS row.

### Shape Front Neck

**Row 1 (RS):** K47 (52, 58, 63, 69, 74, 80, 85) Left Front sts, attach new ball of yarn and bind off center 22 (24, 24,



# Absolute Zero

Continued

26, 26, 28, 28, 30) sts, k47 (52, 58, 63, 69, 74, 80, 85) Right Front sts. Place Left Front sts on holder.

Bind off 4 sts at beg of next RS row, 3 sts at beg of next RS row, 2 sts at beg of next RS row, and 1 st at beg of next 3 RS rows – 35 (40, 46, 51, 57, 62, 68, 73) sts rem. Work even in St st until piece meas 8 (8½, 9, 9½, 9¾, 10, 10¼, 10½)” from Sleeve cast-on, ending with WS row. Place sts on holder.

Return Left Front sts to ndl. Bind off 4 sts at beg of next WS row, 3 sts at beg of next WS row, 2 sts at beg of next WS row, and 1 st at beg of next 3 WS rows – 35 (40, 46, 51, 57, 62, 68, 73) sts rem. Work even in St st until piece meas 8 (8½, 9, 9½, 9¾, 10, 10¼, 10½)” from Sleeve cast-on, ending with WS row.

## Back

Return Back sts to ndl. Cast on 10 sts at beg of next 2 rows for Sleeves – 116 (128, 140, 152, 164, 176, 188, 200) sts. Work even in St st until piece meas 4½ (5, 5½, 6, 6¼, 6½, 6¾, 7)” from Sleeve cast-on, ending with WS row.

## Shape Back Neck

Work as for Shape Front Neck. Join shoulders using the 3-ndl bind-off method.

## FINISHING

Block piece to finished measurements. Sew cast-on edges of Sleeves tog.

## Lower Edging

With crochet hook, work sc evenly along sides and cast-on edge of Lower Front and Lower Back, at a rate of 1 sc for every other row along the sides, and 1 sc for each cast-on st. Fasten off.

## Neck Edging

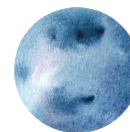
With 16” smaller circ ndl, beg at Right Shoulder seam, pick up and knit 46 (48, 48, 50, 50, 52, 52, 54) sts along Back Neck and 56 (58, 58, 60, 60, 62, 62, 64) sts along Front Neck – 102 (106, 106, 110, 110, 114, 114, 118) sts. PM and join to work in the rnd.

Purl 1 rnd. Bind off all sts using the I-Cord method.

## Sleeve Edging

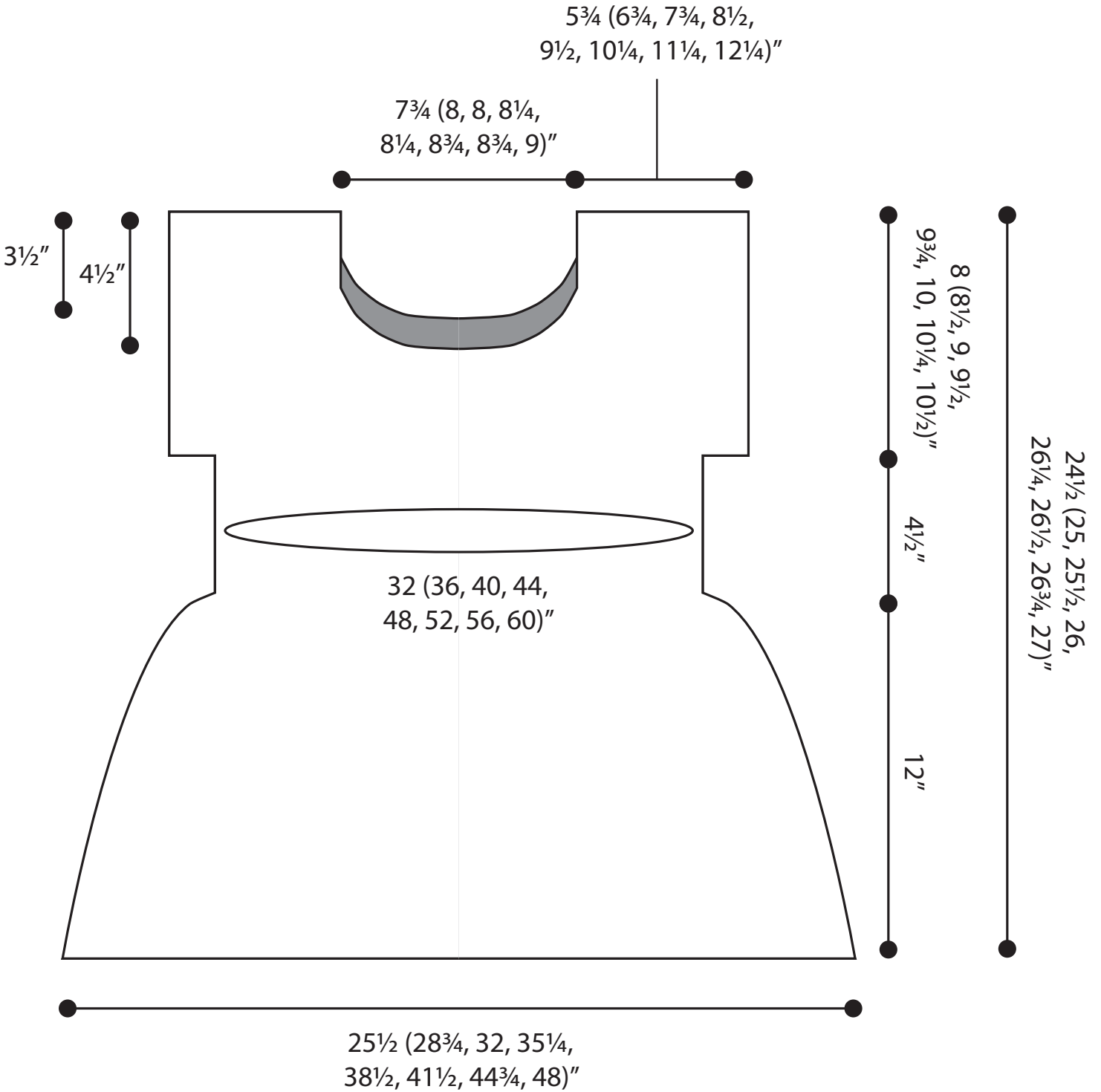
With 16” smaller ndl, pick up and knit 96 (102, 108, 114, 117, 120, 124, 126) sts evenly around Sleeve edge. PM and join to work in the rnd. Purl 1 rnd. Bind off all sts using the I-Cord method.

Weave in ends.



# Absolute Zero

Continued







# Universe



225 m / 246 yds  
1.75 oz / 50 g

42% Linen, 41% Combed Cotton,  
8% Polyamide, 9% Glitter

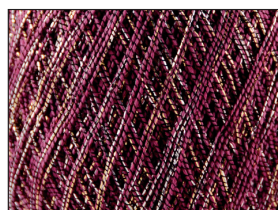
Hand wash, dry flat

Knit: 28 sts x 40 rows = 4" in St st / US Size 2 (2.75 mm)  
Crochet: 27 sc x 31 rows = 4" / US Size C-2 (2.75 mm)

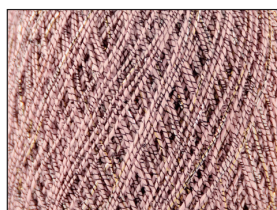
For our tenth anniversary, we carefully crafted this yarn to be worthy of celebration. Universe is a special fiber blend with just the right amount of glitter to call to mind a sparkling night sky.



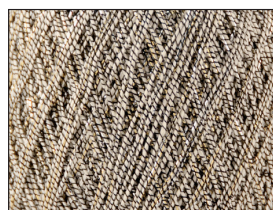
10 balls/bag  
Taste Pack: 2 balls x 10 colors



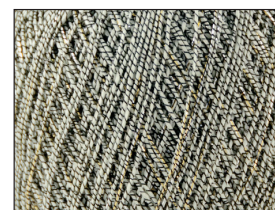
10-01  
Paper



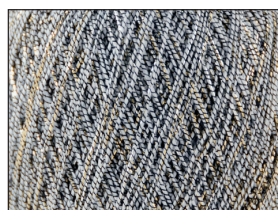
10-02  
Cotton



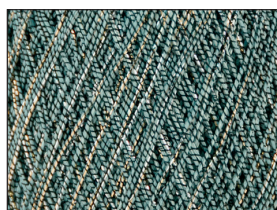
10-03  
Crystal



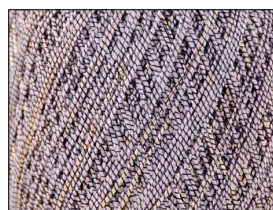
10-04  
Silk



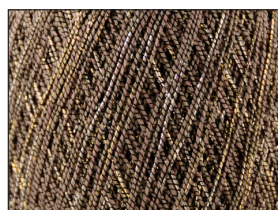
10-05  
Wood



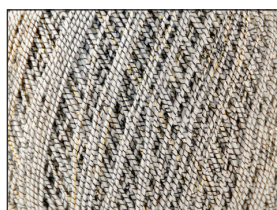
10-06  
Candy



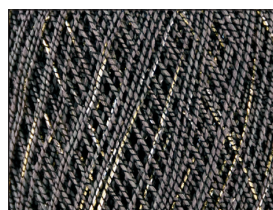
10-07  
Woolen



10-08  
Bronze



10-09  
Pottery



10-10  
Tin

Free Pattern



Planetary Shawl



## Abbreviations

<b>beg</b>	begin(ning)
<b>bet</b>	between
<b>CC</b>	contrast color
<b>ch</b>	chain
<b>circ</b>	circular
<b>cont</b>	continue
<b>dc</b>	double crochet
<b>dc2tog</b>	double crochet 2 stitches together (1 st dec'd)
<b>dec('d)</b>	decrease(d)
<b>est'd</b>	established
<b>fol</b>	following
<b>fp</b>	front post
<b>garter st</b>	knit every row
<b>hdc</b>	half double crochet
<b>inc('d)</b>	increase(d)
<b>k</b>	knit
<b>k2tog</b>	knit 2 stitches together (1 st dec'd)
<b>kwise</b>	knitwise
<b>m</b>	marker
<b>MC</b>	main color
<b>meas</b>	measures
<b>ndl</b>	needle
<b>p</b>	purl
<b>p2tog</b>	purl 2 sts together (1 st dec'd)
<b>patt</b>	pattern
<b>pm</b>	place marker
<b>rem</b>	remain(ing)
<b>rep</b>	repeat
<b>rnd</b>	round

<b>RS</b>	right side
<b>sc</b>	single crochet
<b>sc2tog</b>	single crochet 2 stitches together (1 st dec'd)
<b>sk</b>	skip
<b>sl</b>	slip
<b>sp</b>	space(s)
<b>ssk</b>	slip next 2 sts individually knitwise, slip them back to left needle in this position, knit them together through the back loops (1 st dec'd)
<b>ssp</b>	slip next 2 sts individually knitwise, slip them back to left needle in this position, purl them together through the back loops (1 st dec'd)
<b>St st</b>	Stockinette stitch (knit on RS rows, purl on WS rows; in the rnd, knit every rnd)
<b>st(s)</b>	stitch(es)
<b>tbl</b>	through the back loop(s)
<b>tog</b>	together
<b>tr</b>	triple crochet
<b>WS</b>	wrong side
<b>yo</b>	yarn over

## Distribution

### US

Universal Yarn  
5600 David Cox Rd, Suite F  
Charlotte, NC 28269  
Tel: 877.864.9276  
Fax: 704.454.1029  
e-mail: patterns@universalyarn.com  
www.universalyarn.com

### CANADA

H.A. Kidd & Company  
5 Northline Rd  
Toronto, ON M4B 3P2  
Tel: 800.387.1753  
Fax: 416.364.4860  
email: info1@hakidd.com  
www.hakidd.com.com

### MEXICO

Rebecca Pick Estambres  
Lago Chalco No. 129 Col Anahuac  
C.P. 1320 Mexico, D.F.  
Tel: 52.5341.4413  
Fax: 52.5341.6019  
www.rebeccapickestambres.com

### TURKEY

Defne  
DEMIRTAS ORGANIZE SANAYI BÖLGESİ  
ZAMBAK SOKAK NO:3  
OSMANGAZI/Bursa  
Tel: 90.224.261.3347-48  
Fax: 90.224.261.3332  
e-mail: info@defneiplikpazarlama.com



## Acknowledgements

### Creative Director

Amy Gunderson

### Proofreader

Heather Hill

### Designers

Yonca Ozbelli  
Rachel Brockman  
Amy Gunderson

### Photographer

Rachel Brockman

### Graphic Artist

Heather Hill

### Technical Editors

Rachel Brockman  
Amy Gunderson

### Model

Jarin Simmons