

# Bee Happy

Month # 5

## BUTTERFLIES, BLUE FLOWER, SPOOLS

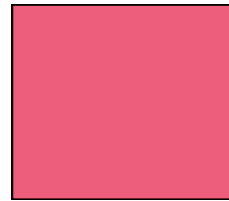
### BUTTERFLY



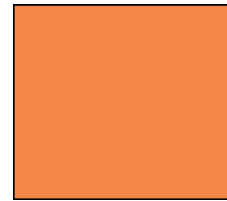
BODY  
2 X 10.5



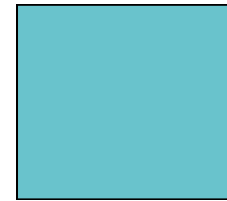
BACKGROUND  
7 X 7



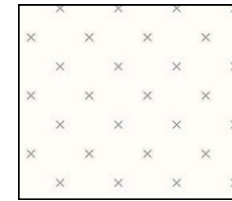
BODY  
2 X 10.5



BODY  
2 X 10.5



BODY  
2 X 10.5



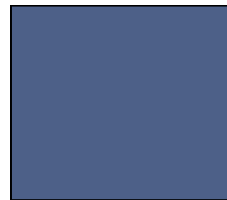
BACKGROUND  
6 X 14

### BUTTERFLIES

### BLUE FLOWERS



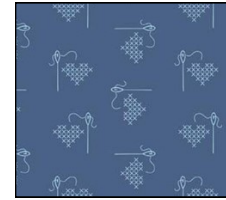
CENTER FLOWER  
4 X 5



CENTER  
3 X 3



SIDE FLOWERS  
4 X 10.5



SIDE FLOWER  
CENTER  
4 X 10.5



903-760-7397  
info@stitchinheaven.com

# Bee Happy

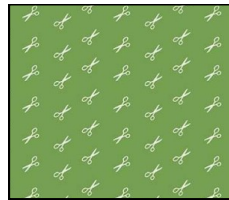
Month # 5

## BUTTERFLIES, BLUE FLOWERS, SPOOLS

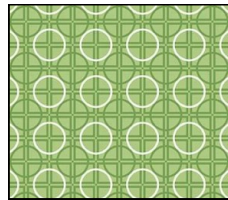
### BLUE FLOWERS BLOCK



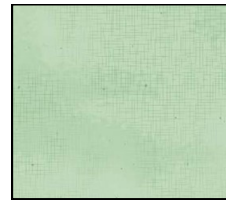
STEM  
2 X 10.5



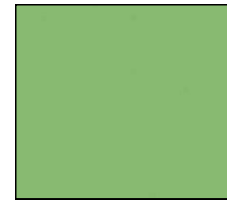
LEAVES  
3 X 5



LEAVES  
3 X 5



LEAVES  
3 X 5

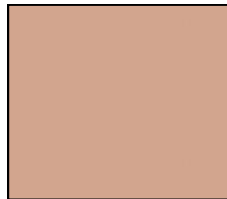


LEAVES  
3 X 5



BACKGROUND  
18 X 5

### SPOOLS BLOCK



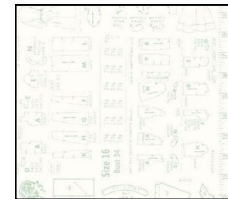
FABRIC SPOOL  
8 X 4



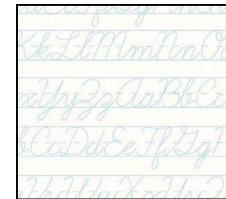
FABRIC SPOOL  
8 X 4



FABRIC SPOOL  
8 X 4



BACKGROUND  
12 X 5



BACKGROUND  
12 X 5



903-760-7397  
info@stitchinheaven.com

# Bee Happy

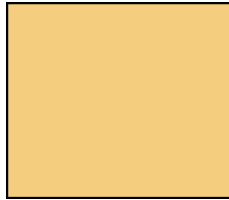
Month # 5

**BUTTERFLIES, BLUE FLOWERS, SPOOLS**

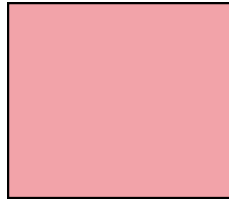
SPOOLS



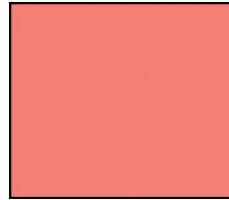
THREAD  
3 X 3



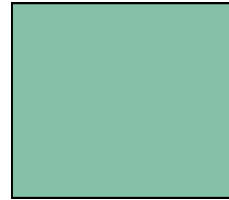
THREAD  
3 X 3



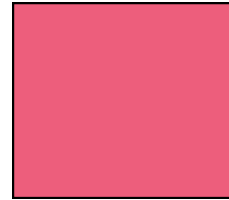
THREAD  
3 X 3



THREAD  
3 X 3



THREAD  
3 X 3



THREAD  
3 X 3