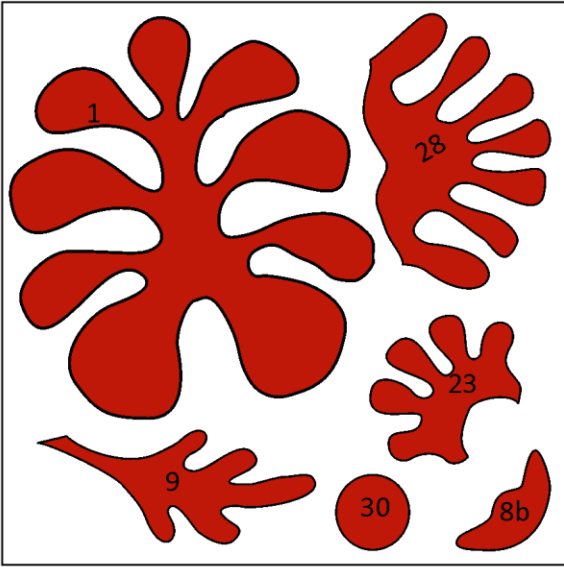
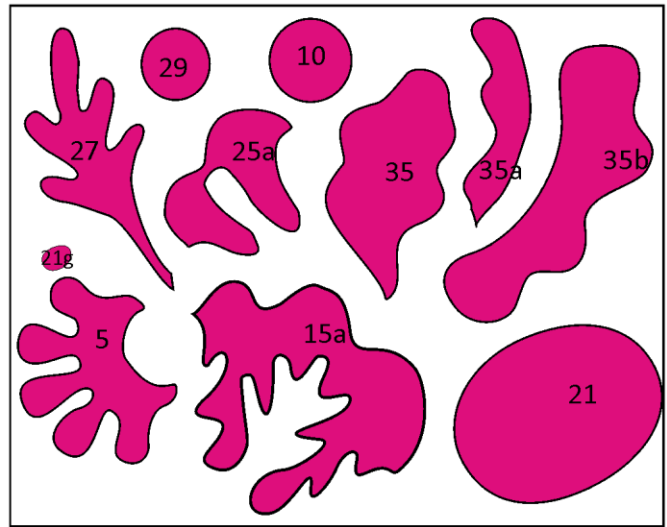


Fabric 1 - cut 92" x 12"

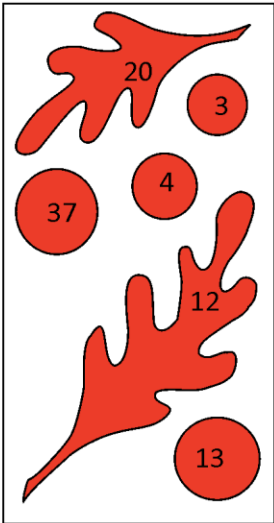
Fabric 2 - cut 15" x 15"



Fabric 3 - cut 17" x 14"



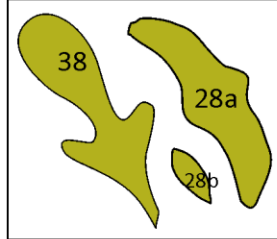
Fabric 4 - cut 8" x 14"



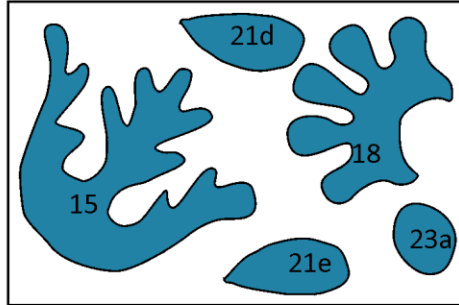
Fabric 5 - cut 6" x 4"



Fabric 6 - cut 8" x 7"



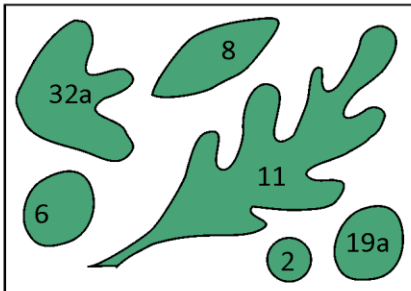
Fabric 8 - cut 12" x 9"

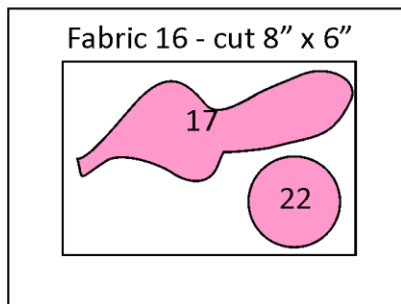
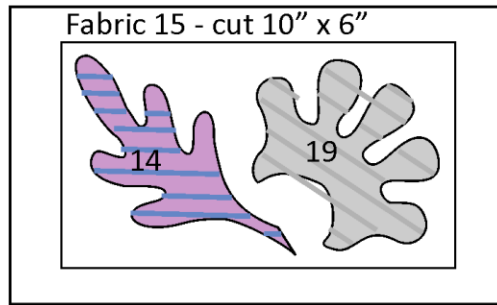
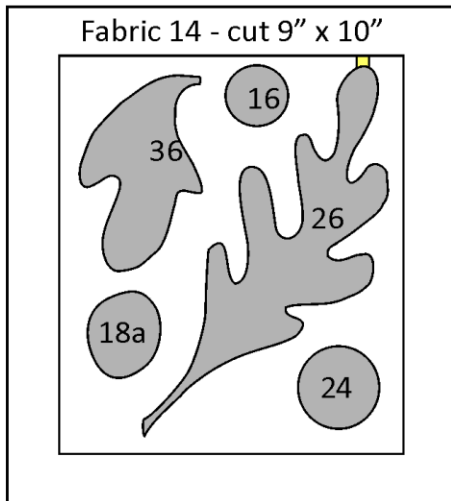
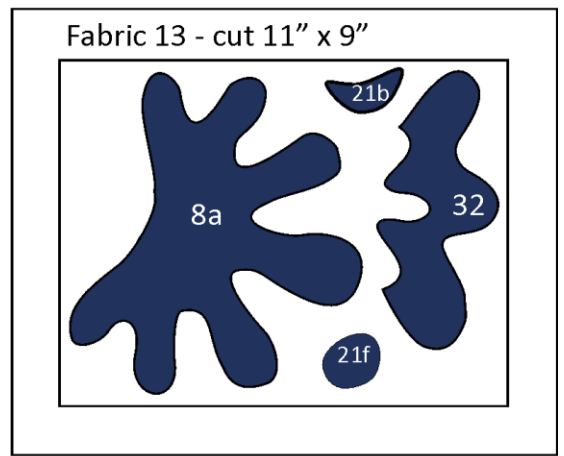
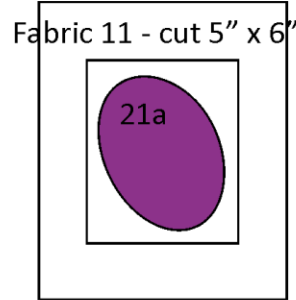
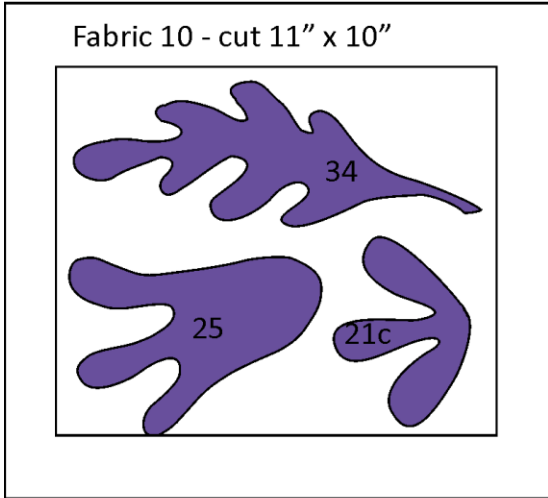


Fabric 9 - cut 6" x 8"



Fabric 7 - cut 11" x 9"





Stem = 102"

