

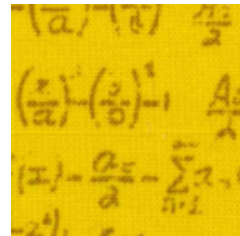
GYPSY WIFE

Month #4

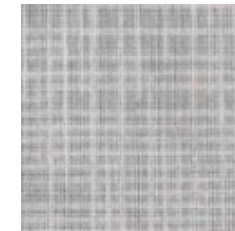
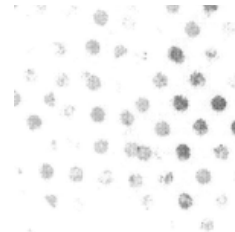
INDIAN HATCHET AND PUSS IN THE CORNER (MAKE 2)

INDIAN HATCHET
WILL BE USED IN SECTION 6

FEATURE FABRICS
(FABRICS FF, GG, HH, II)



CORNER FABRICS
(FABRICS JJ, KK, LL, MM)



903-638-6915

bomhq@stitchinheaven.com

GYPSY WIFE

Month #4

PUSS IN THE CORNER (MAKE 2)

PUSS IN THE CORNER
WILL BE USED IN SECTION 1



FABRIC NN
(CENTER)



FABRIC OO



FABRIC PP

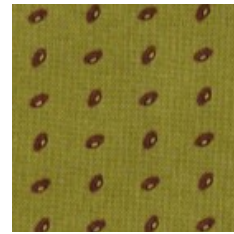


FABRIC QQ

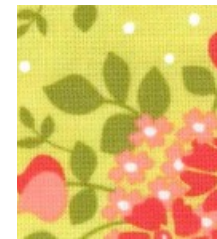


I INCLUDED THIS FABRIC FOR
THE QQ 1 1/2 " SQUARES IF YOU
WOULD LIKE TO MAKE IT
"SCAPPY" LIKE JEN'S

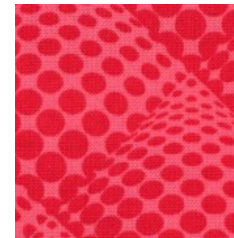
PUSS IN THE CORNER
WITH BORDER
WILL BE USED IN SECTION 10



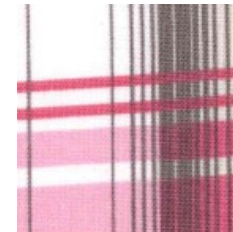
FABRIC NN
(CENTER)



FABRIC OO



FABRIC PP



FABRIC QQ



BORDER FABRIC

