

Figure 1: Overall Case Assembly

Congratulations on your display case purchase. We truly appreciate your business. During the assembly process of your display case, if you need additional assistance, please contact us online or call us.

Bill of Material:

Component Name	Qty.
Wood Screws	10
Case Top Assembly	1
Long Plexiglas Panels	2
Short Plexiglas Panels	2
Corner Posts	4
Locking Screws	2
Case Frame	1
Display Base	1
Screw Driver	1
Allen Key	1
Optional Lighting Kit	
12VDC Inline Dimmer Switch	1
LED Lights (installed)	1
12VDC Wall Power Cord	1

Count all items before assembling. The optional LED light kit will only be included if your display case was ordered with LED lights.

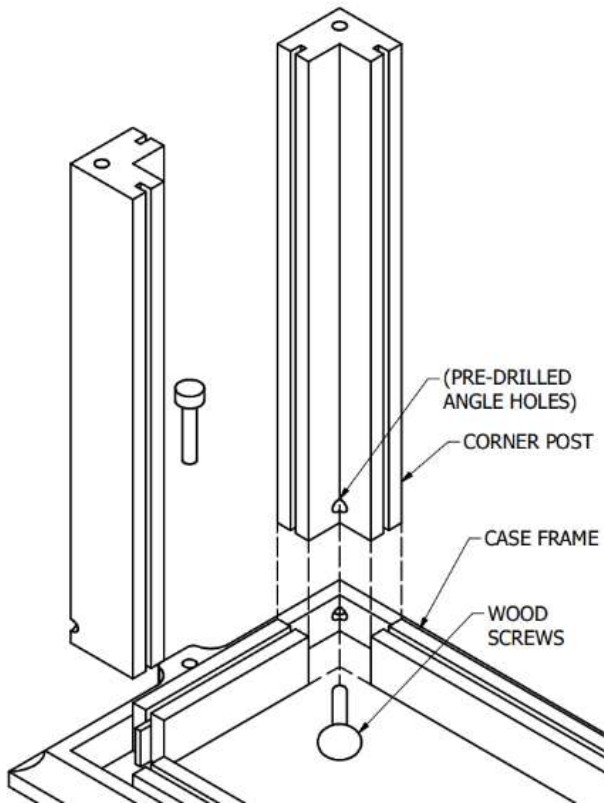


Figure 2: Corner Posts Assembly

Step 1:

- A. Bottom of Case Frame corners are labeled 1-4.
- B. Bottom of Case Frame has FRONT label, remember this for Step 3.
- C. Insert corresponding Corner Posts fully into Case Frame. (See FIG 2)
- D. Insert Wood Screws into Corner Posts to secure Corner Posts to Case Frame using pre-drilled angle holes and Screw Driver.
- E. Repeat Step 1 A-C for all 4 Corner Posts.

Step 2:

- A. Remove protective film from Plexiglas Panels.
- B. Insert all 4 Plexiglas Panels into Corner Post slots and Case Frame slots completely.
- C. Plexiglas Panels will fit tight side to side, but will be shorter than the Corner Posts.
- D. If your case has an **LED LIGHT PACKAGE** see the **LED LIGHT ADDENDUM BEFORE PROCEEDING TO STEP 3.**

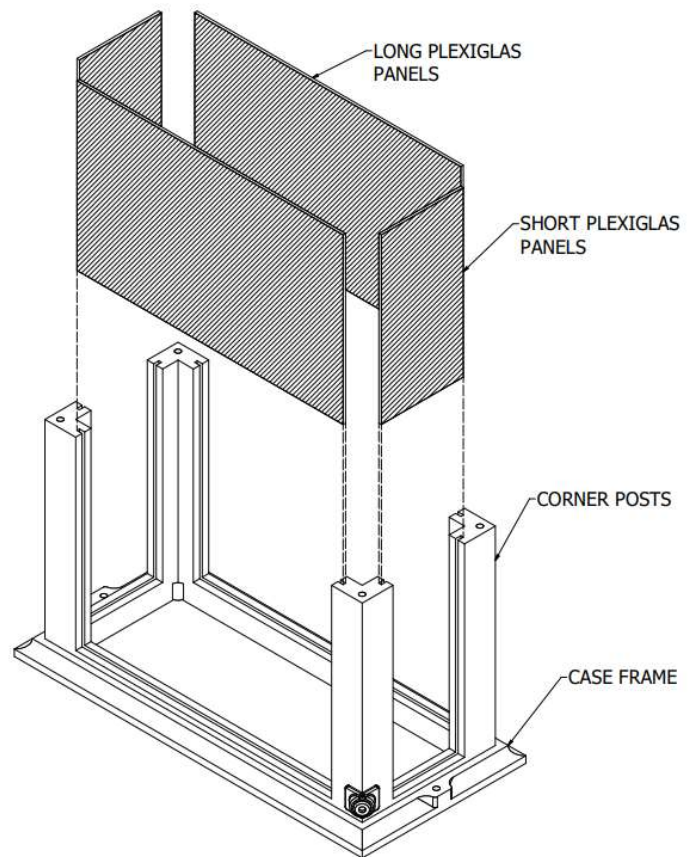


Figure 3: Plexiglas Assembly

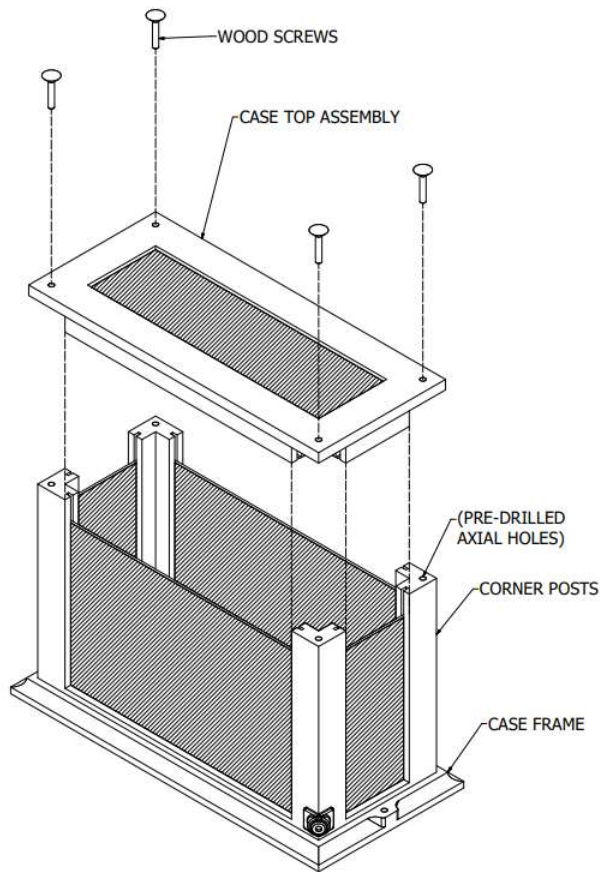


Figure 4: Top Assembly

Step 3:

- A. NOTE: If your case has an **LED LIGHT PACKAGE** see the **LED LIGHT ADDENDUM BEFORE PROCEEDING**.
- B. Bottom of Case Top Assembly has FRONT label.
- C. Orient FRONT label on Case Top Assembly and Case Frame.
- D. Assemble Case Top Assembly to the assembly in Step 2. Use the guide tabs on the Case Top Assembly to align with Corner Posts.
- E. Make sure Plexiglas Panels are fully seated into Case Top Assembly slots.
- F. Secure Case Top Assembly with Wood Screws and Screw Driver into pre-drilled axial holes.

Step 4:

- A. Your display case is now fully assembled!
- B. Once your model, collectable, or valuable item is in your display case and you have the case where you want it, simply set the Case Assembly over the Display Base.
- C. Use the 2 Locking Screws and Allen Key to lock the case to the Display Base.

Caring for Your Display Case

- **DO NOT** expose it to the following environments:
 - Excessive direct liquids / Humidity
 - Extreme Hot / Cold
 - Direct sunlight continually
- Your display case is designed for **INDOOR USE ONLY**
- To clean Plexiglas, use dedicated Plexiglas cleaner like NOVUS Plastic Polish and a dry soft cloth.
- To clean wood use a lightly damp soft cloth

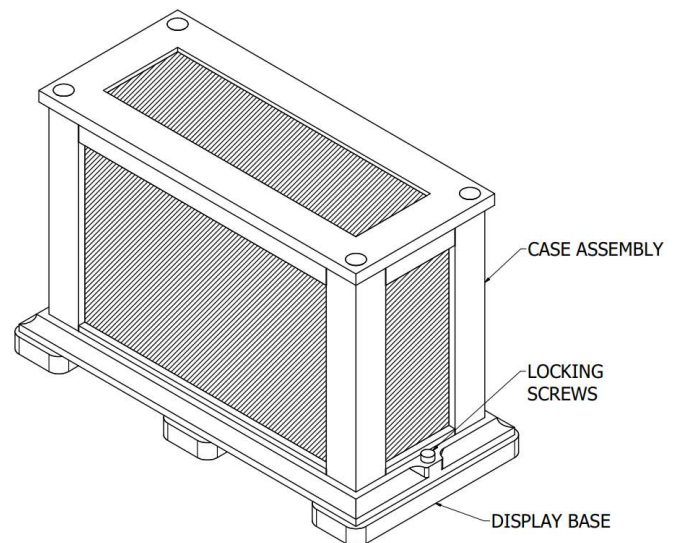


Figure 5: Assembled Case