

SOFF-CUT
INTERNATIONAL, INC.

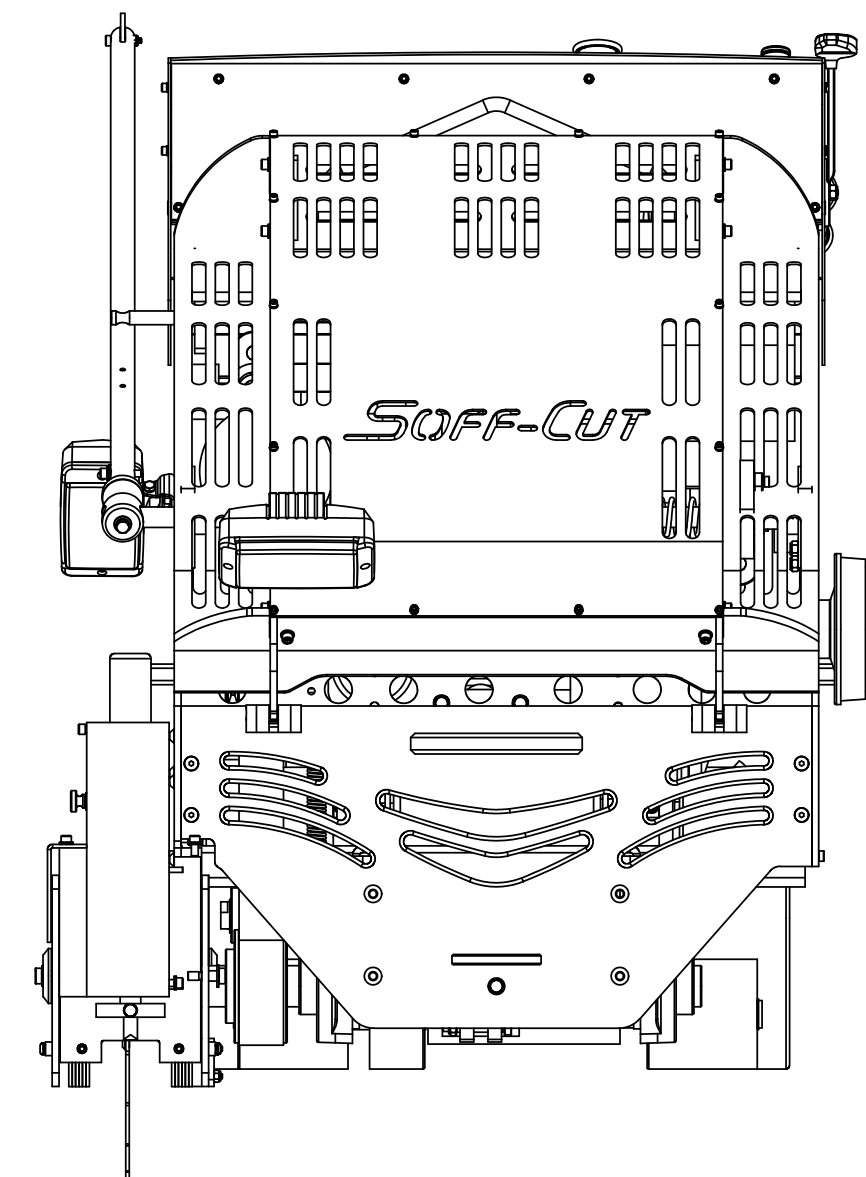
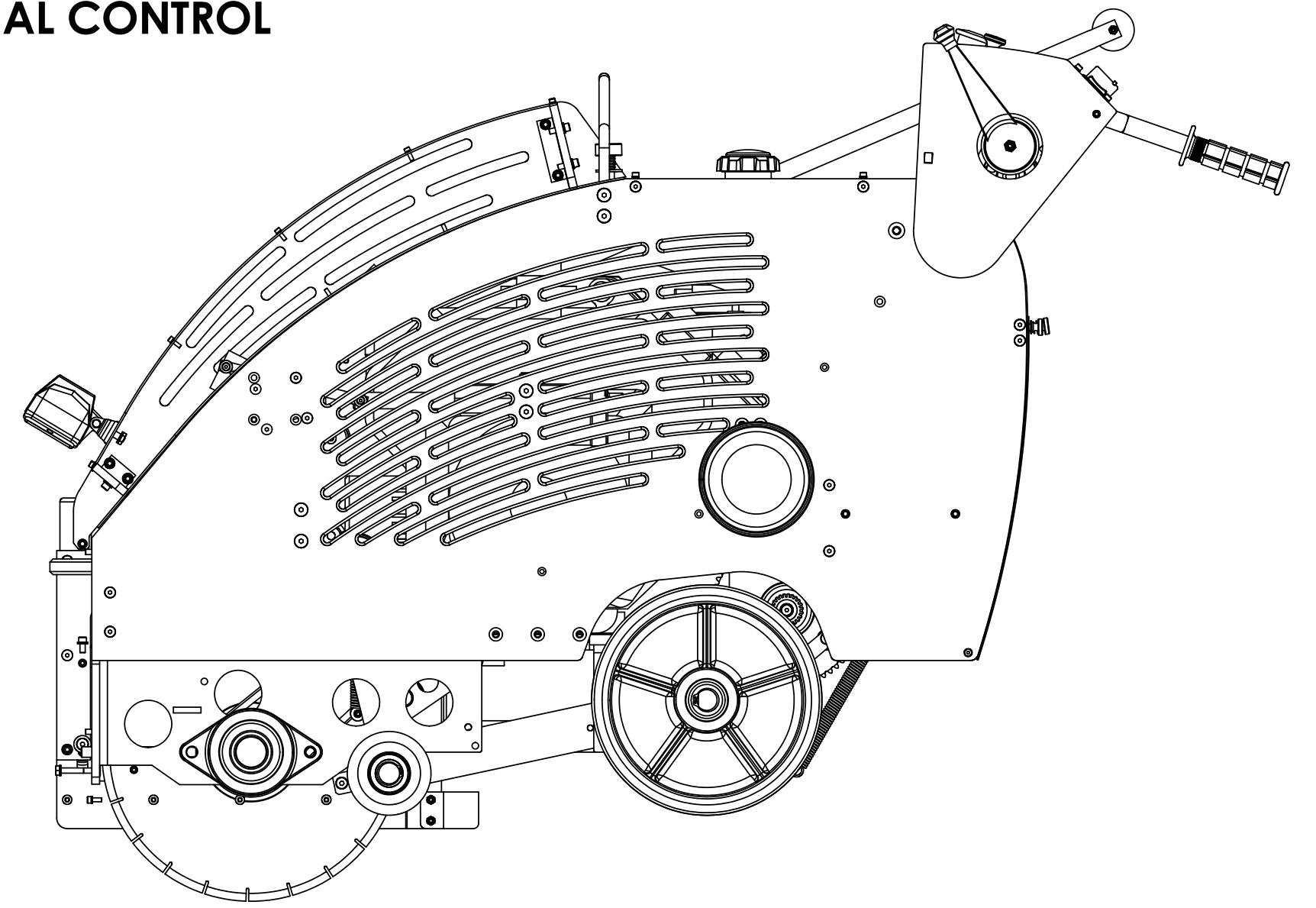
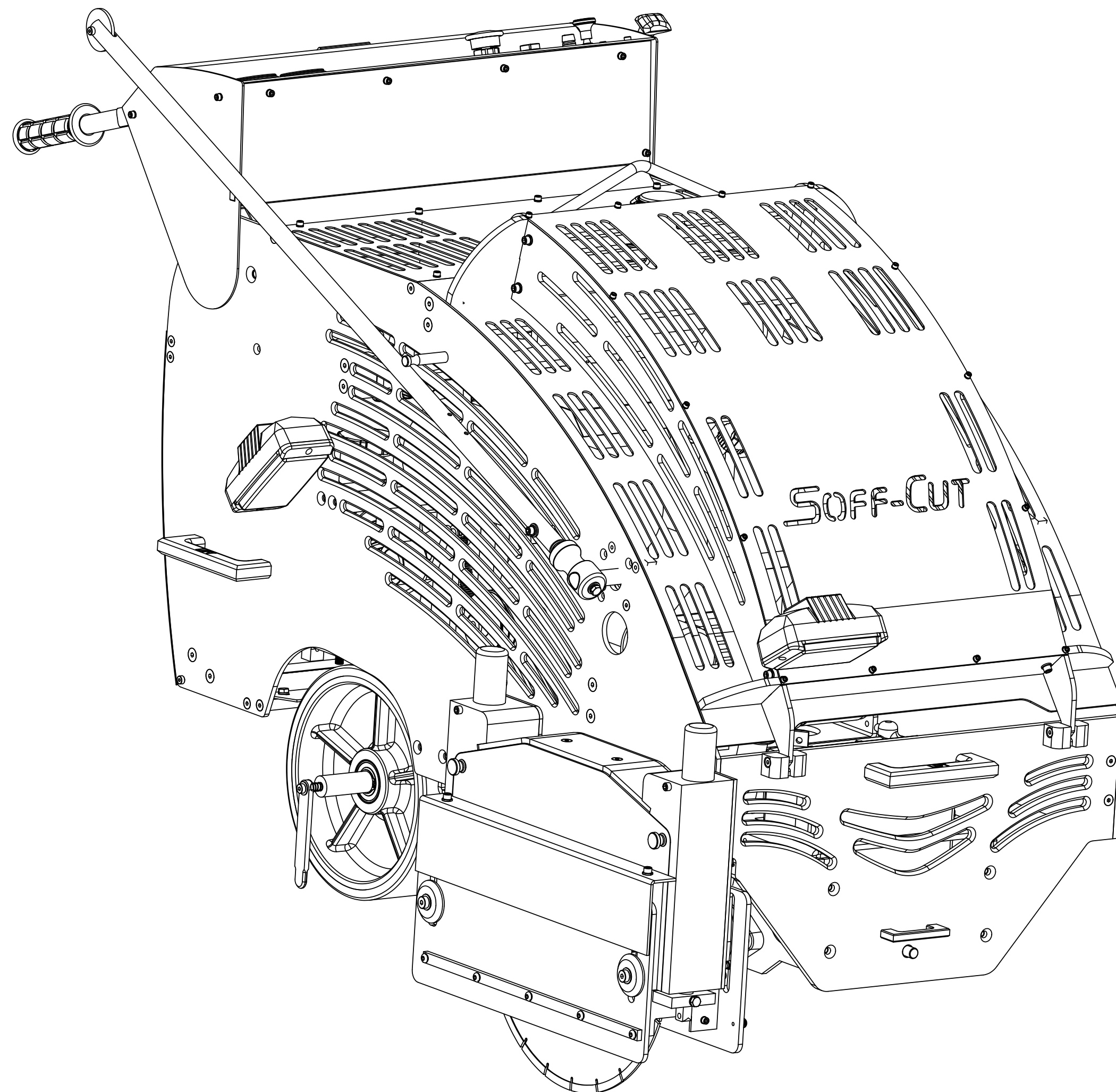
Model X-5000

Subassembly Parts List



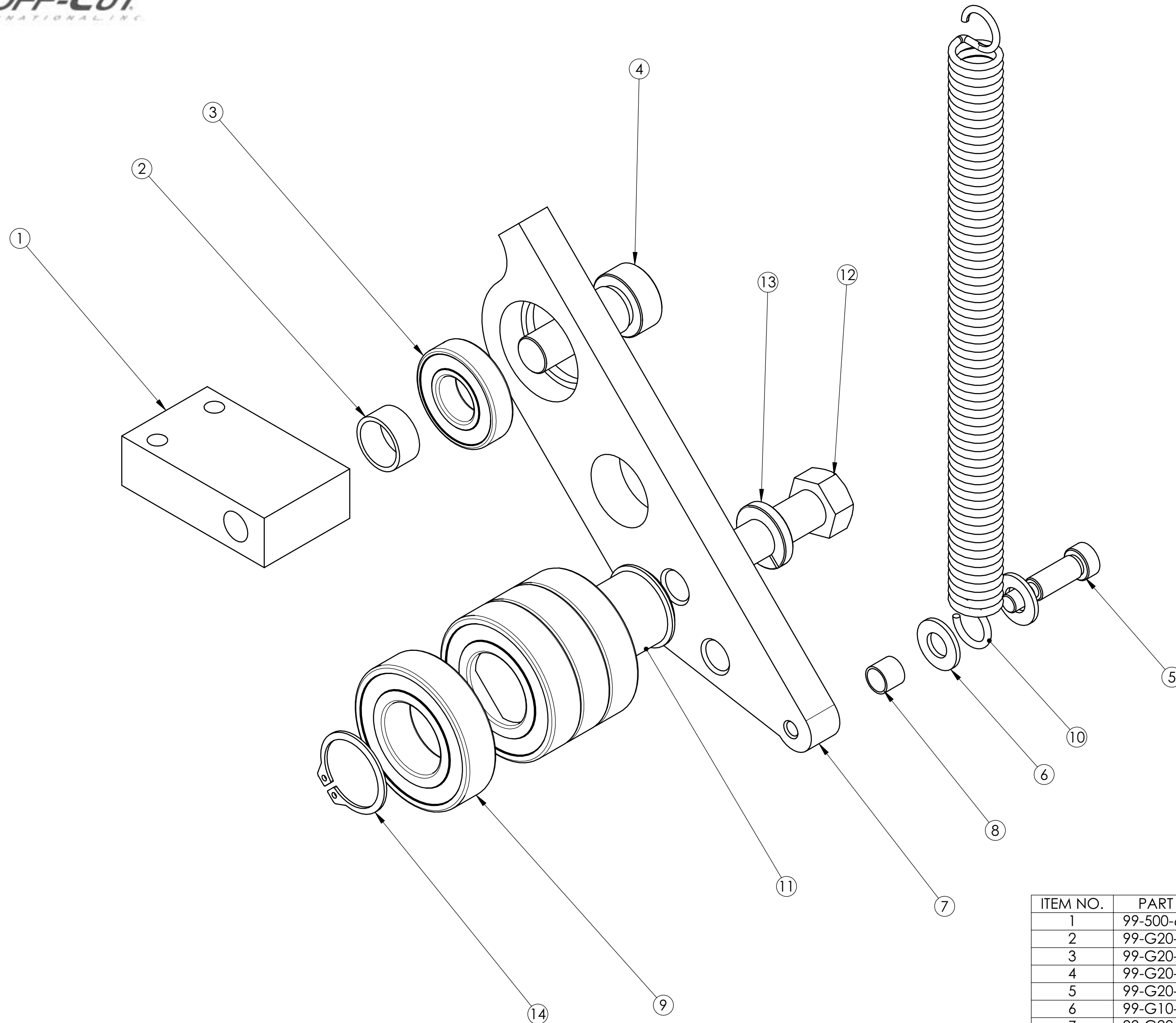
Revised 9/05

- 4" DEPTH-OF-CUT PAVING SAW
- 27 Hp, V-Twin KOHLER MOTOR
- DUAL HIGH OUTPUT PIVOTING HALOGEN HEADLIGHTS
- LEVER OPERATED DIRECT GEAR DRIVE WITH PROPORTIONAL CONTROL
- CENTRALLY LOCATED LIFTING HOOK
- GEAR SENSING FORWARD SPEED / FOOTAGE COUNTER
- REAR STORAGE BIN
- HIGH STRENGTH SINGLE PIECE STEEL MAINFRAME
- VARIABLE DEPTH OF CUT
- PARKING BRAKE



SUB-ASSEMBLY BILL OF MATERIAL

SOFF-CUT INT'L, INC. CLAIMS PROPRIETARY RIGHTS TO THE MATERIAL DISCLOSED IN THIS DOCUMENT. THIS DOCUMENT IS PROVIDED IN CONFIDENCE AND MAY NOT BE REPRODUCED OR DISCLOSED WITHOUT WRITTEN PERMISSION FROM SOFF-CUT INT'L. © COPYRIGHT 2005, SOFF-CUT INT'L, INC. ALL RIGHTS RESERVED.

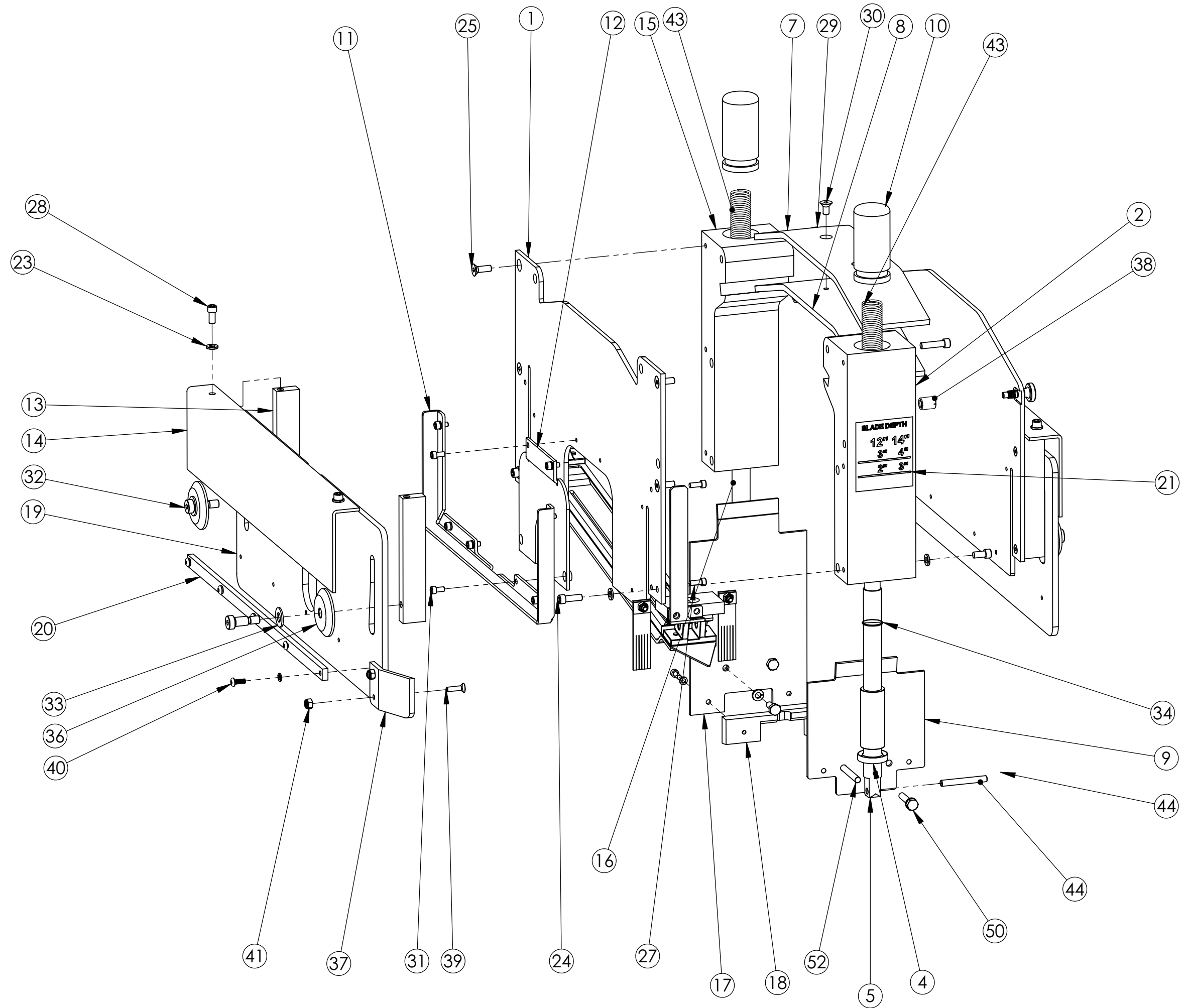


ITEM NO.	PART NUMBER	DESCRIPTION	Fixed/QTY.
1	99-500-6092-00	BLOCK, IDLER MOUNT	1
2	99-G20-1587-02	SPACER, AL 5/8" ID X.350"	1
3	99-G20-8500-02	Bearing, 1.375 OD	1
4	99-G20-7503-06	99-G20-7503-06	1
5	99-G20-7503-08	99-G20-7503-08	1
6	99-G10-7501-00	Washer, Flat 5/16"	2
7	99-G20-1521-00	Arm, Idler	1
8	99-G20-1623-00	Bushing, Pump Idler	1
9	99-G20-8500-06	Bearing, 1.375 OD	4
10	99-G20-8505-04	Spring, Extension	1
11	99-500-6104-00	SHAFT, BLADE BELT TENSIONER	1
12	99-X20-7002-01	HHB 1/2-13 X 1 1/2 GR 8	1
13	99-G20-7509-04	Washer, Split 1/2"	1
14	99-G20-7514-01	SNAP RING, 1" EXT	2

SUB-ASSEMBLY BILL OF MATERIAL

SOFF-CUT INT'L. INC. CLAIMS PROPRIETARY RIGHTS TO THE MATERIAL DISCLOSED IN THIS DOCUMENT. THIS DOCUMENT IS PROVIDED IN CONFIDENCE AND MAY NOT BE REPRODUCED OR DISCLOSED WITHOUT WRITTEN PERMISSION FROM SOFF-CUT INT'L. © COPYRIGHT 2005, SOFF-CUT INT'L, INC. ALL RIGHTS RESERVED.

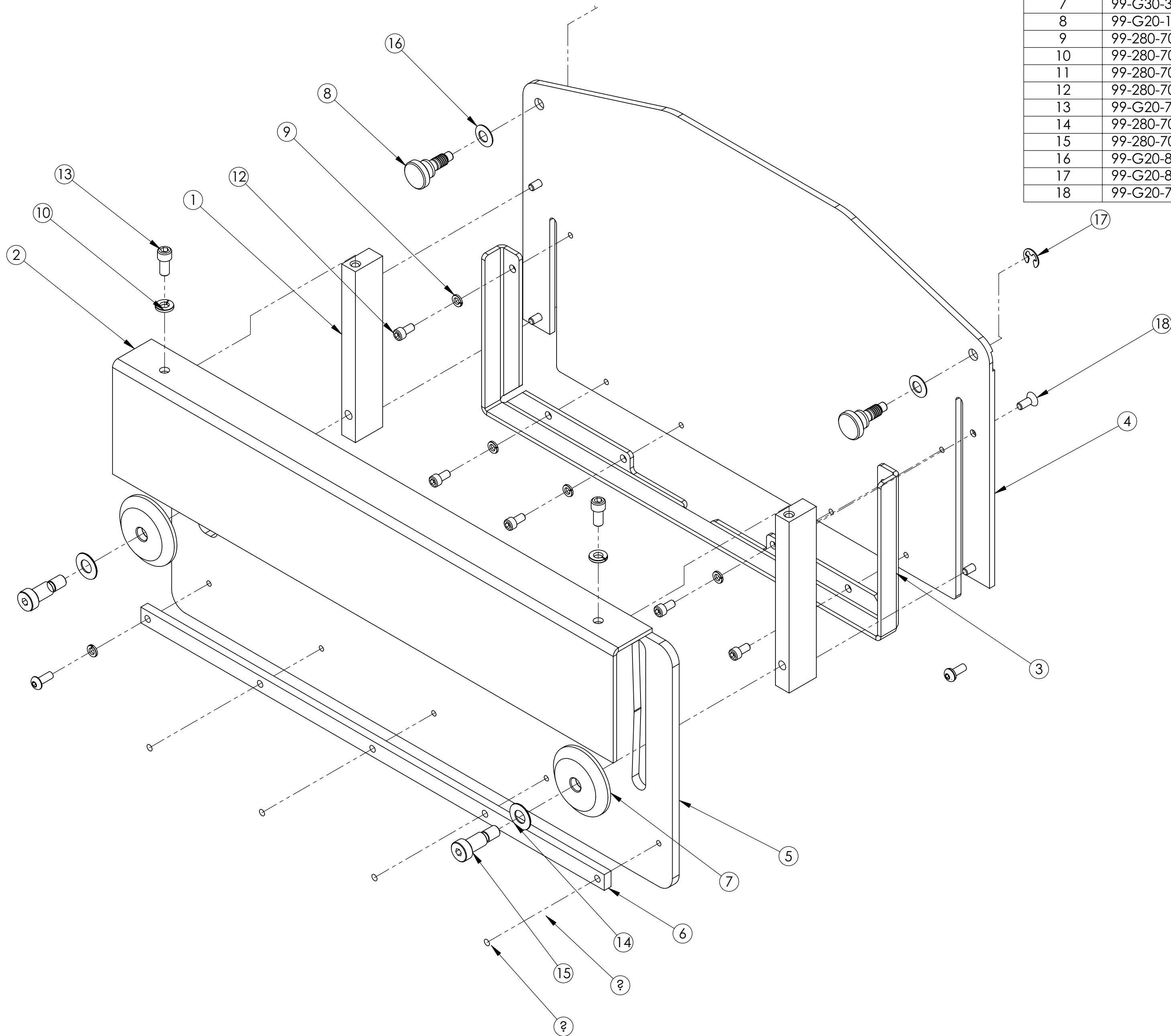
ITEM NO.	PART NUMBER	DESCRIPTION	Fixed .250 Float/QTY.
1	99-500-6065-00	COVER, BB REAR	1
2	99-500-6063-00	Housing, BB Shaft, Rear	1
3	99-DGA-8554-00	GX4200 3/4 X 1 X 2 1/2 BUSHING	2
4	99-G20-8506-00	Oil Seal, 1.25" x .7" x .250"	2
5	99-500-6073-00	Shaft, Blade Block, Rear	1
6	99-X75-1804-00	Block, Shaft Collar, BB	1
7	99-500-6059-00	Cover, BB Top, Outer	1
8	99-500-6058-00	Cover, BB Top, Inner	1
9	99-500-6067-00	Diverter, Rear, 4" Depth	1
10	99-500-6074-00	Cap, BB, Front, 4" Depth	2
11	99-500-6062-00	Bracket, BB Angle Diverter	1
12	99-500-6068-00	COVER, BELT ACCESS	1
13	99-500-6056-00	Block, Diverter	2
14	99-500-6060-00	Bracket, Angle, Inner	1
15	99-500-6064-00	Housing, BB Shaft, Front	1
16	99-500-6072-00	Shaft, Blade Block, Front	1
17	99-500-6066-00	Diverter, Front, 4" Depth	1
18	99-500-6057-00	Diverter Block, Front	1
19	99-500-6070-00	LEXAN SHIELD, INNER	1
20	99-500-6087-00	Stiffener, Lexan	1
21	99-500-8004-00	Label, Depth Gauge	1
22	Skid Plate Assy 14in	SKID PLATE ASSY, 14.0" STD	1
23	99-280-7018-07	Washer, Split 1/4"	12
24	99-G20-7006-04	SHCS 1/4-20 X .75	2
25	99-280-7007-02	FHS, 1/4-20 x 1	4
26	99-280-7018-09	Washer, Split #10	15
27	99-G20-7506-11	SHCS 10-32 X .5	6
28	99-G20-7006-03	SHCS 1/4-20 X .5	4
29	99-280-7006-05	SHCS 1/4-20 X 1	2
30	99-280-7007-01	FHS, 1/4-20 x 1/2	2
31	99-280-7006-01	SHCS 10-32 X .375	8
32	99-280-7003-03	99-280-7003-03	2
33	99-G20-7501-01	Washer, Flat 3/8"	2
34	99-G20-7515-01	RR, WS-75 Internal	2
35	99-G30-7519-00	Dowel Pin, 1/4 x 1 1/4	1
36	99-G30-3549-01	Washer, Lexan	2
37	99-G30-3548-01	LEXAN SHIELD DIVERTOR	1
38	99-G20-8555-00	Insert, 1/2-13 x 5/16-18	2
39	99-G30-7506-08	FHS, 10-24 x 3/4	2
40	99-280-7008-18	Button Head Bolt	5
41	99-280-7012-01	NYLOC NUT #10-24 CAD.PL.	4
42	Blade Housing Cover Sub-Assy X-5000	Cover, Blade Housing	1
43	99-500-6076-00	SPRING	2
44	99-500-8007-00	DOWEL PIN, 1/4" DIA X 2"	1
45	99-500-6101-00	Block, Shaft Collar, BB	1
46	99-X40-4840-00	Arm, Blade Depth	1
47	99-G20-7507-10	FHS, #10-24 x 5/8	2
48	99-G30-3713-01	SMALL DUST FLAP	2
49	99-G30-3713-00	MTG. BAR FOR RUBBER FLAPS SML	2
50	99-G20-7505-03	HHB 1/4-20 X 1.25	2
51	99-280-7005-02	HHB 1/4-20 X .625	3
52	99-G20-7505-15	HHB 1/4-20 X 2	1



SUB-ASSEMBLY BILL OF MATERIAL

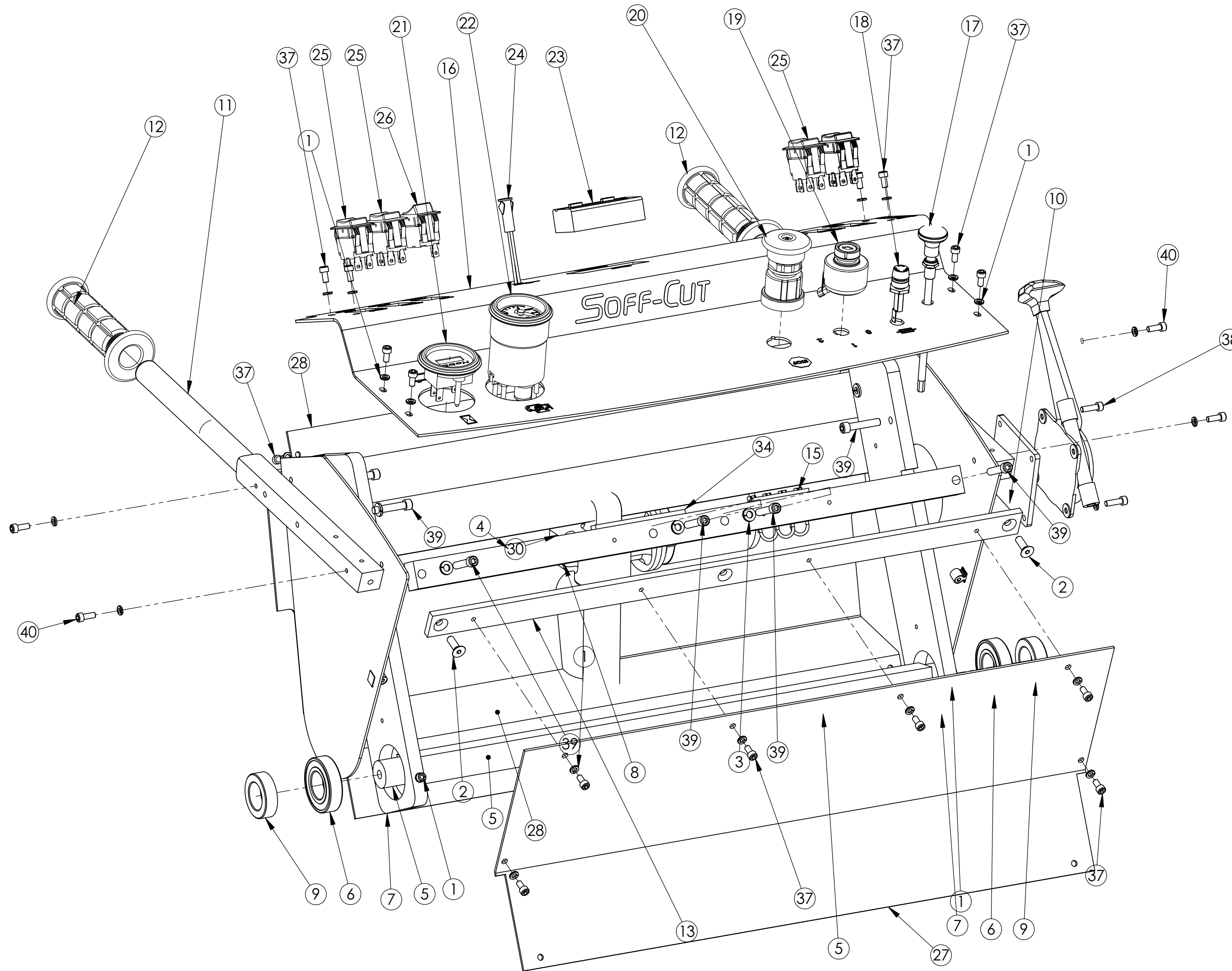
SOFF-CUT INT'L, INC. CLAIMS PROPRIETARY RIGHTS TO THE MATERIAL DISCLOSED IN THIS DOCUMENT. THIS DOCUMENT IS PROVIDED IN CONFIDENCE AND MAY NOT BE REPRODUCED OR DISCLOSED WITHOUT WRITTEN PERMISSION FROM SOFF-CUT INT'L. © COPYRIGHT 2005, SOFF-CUT INT'L, INC. ALL RIGHTS RESERVED.

ITEM NO.	PART NUMBER	DESCRIPTION	Fixed/QTY.
1	99-500-6056-00	Block, Diverter	2
2	99-500-6061-00	Bracket, Angle, Outer	1
3	99-500-6062-00	Bracket, BB Angle Diverter	1
4	99-500-6069-00	Cover, BB, 4" Depth	1
5	99-500-6071-00	LEXAN SHIELD, OUTER	1
6	99-500-6087-00	Stiffener, Lexan	1
7	99-G30-3549-01	Washer, Lexan	2
8	99-G20-1639-01	Knob, BB Cover	2
9	99-280-7018-09	Washer, Split #10	11
10	99-280-7018-07	Washer, Split 1/4"	2
11	99-280-7008-18	BHS, 10-32 x 1/2	5
12	99-280-7006-01	SHCS 10-32 X .375	6
13	99-G20-7006-03	SHCS 1/4-20 X .5	2
14	99-280-7020-01	Washer, 3/8 Steel	2
15	99-280-7003-03	99-280-7003-03	2
16	99-G20-8557-00	Washer, Belleville	2
17	99-G20-8556-02	E-clip, 1/4" Dia	2
18	99-G20-7507-05	FHS, 10-32 x .5	4



SUB-ASSEMBLY BILL OF MATERIAL

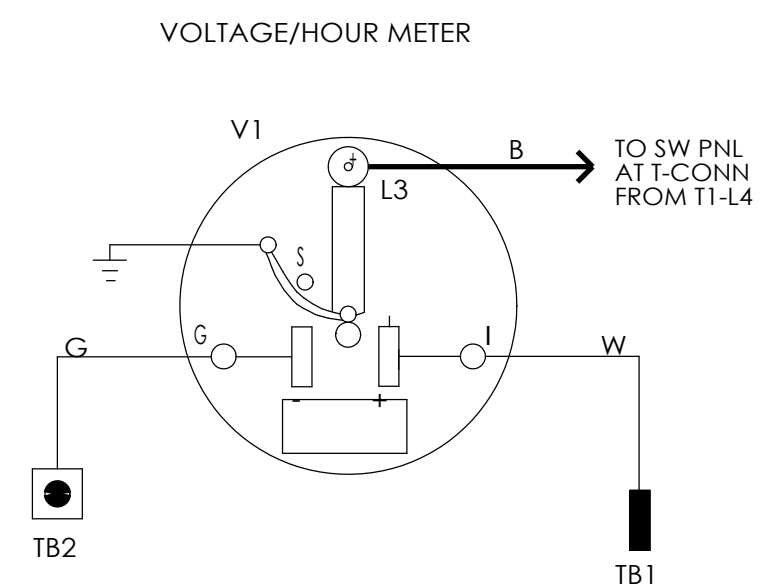
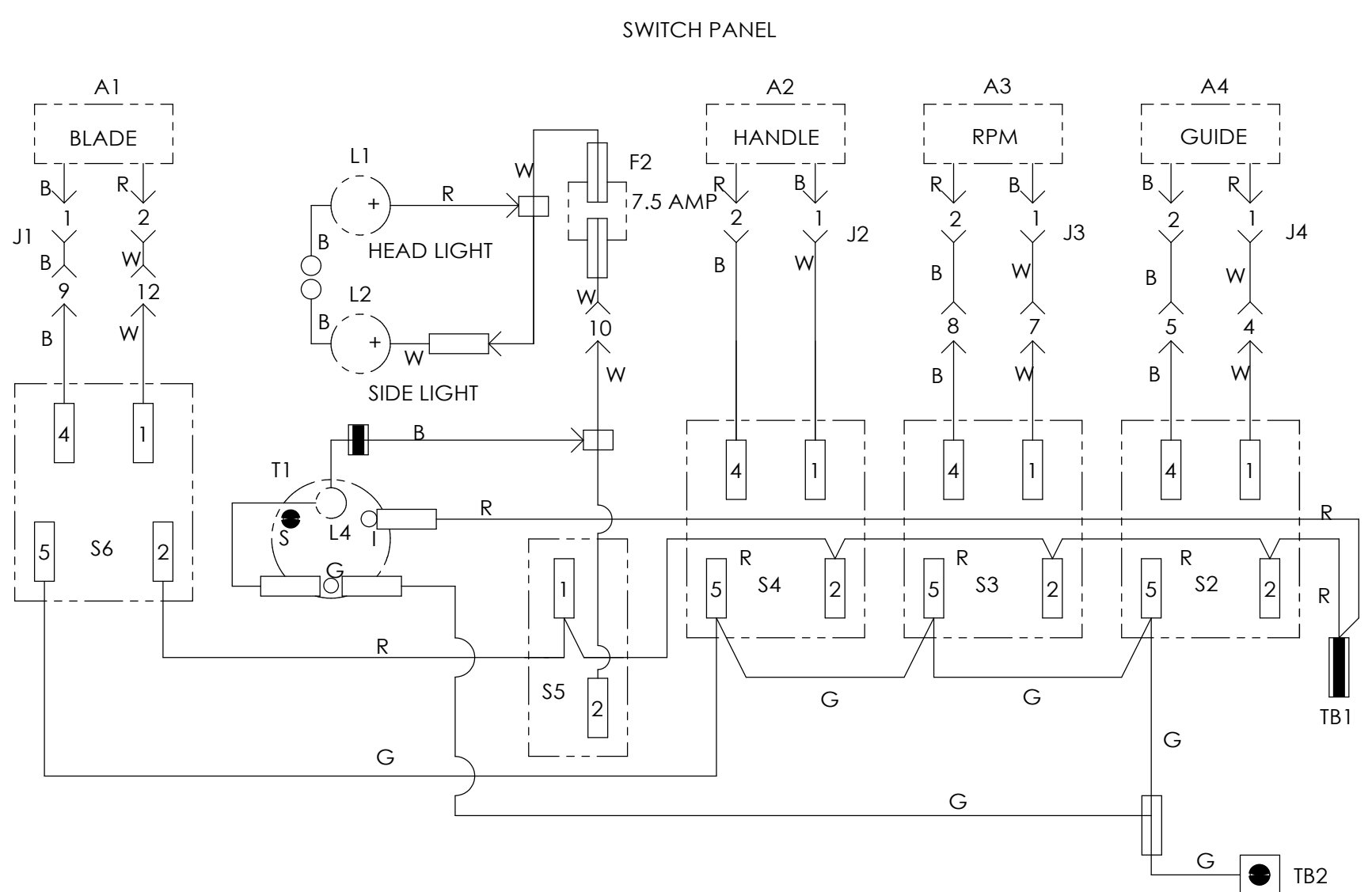
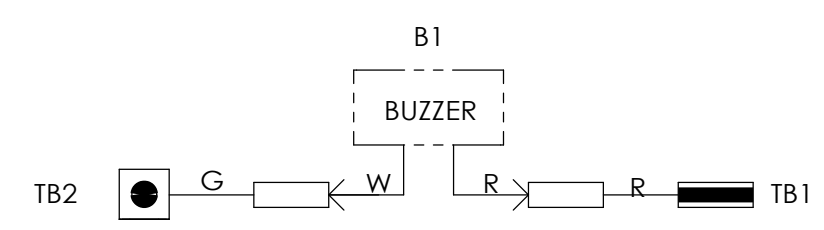
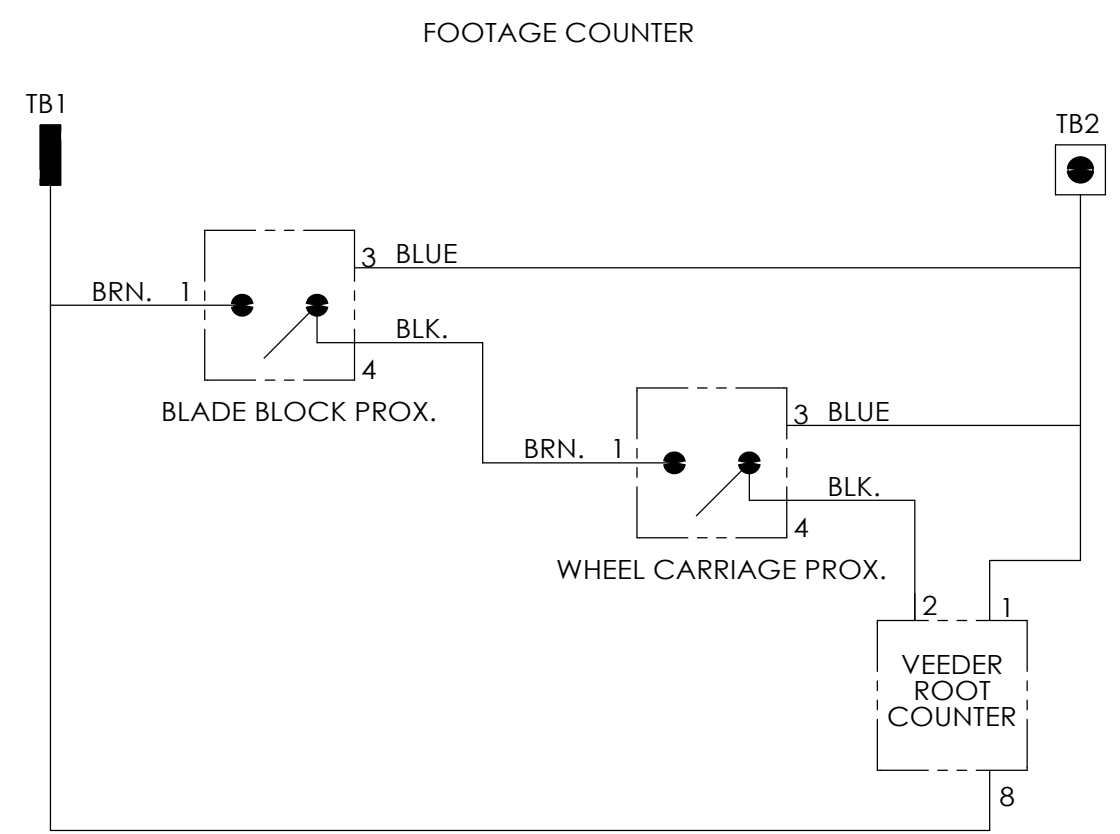
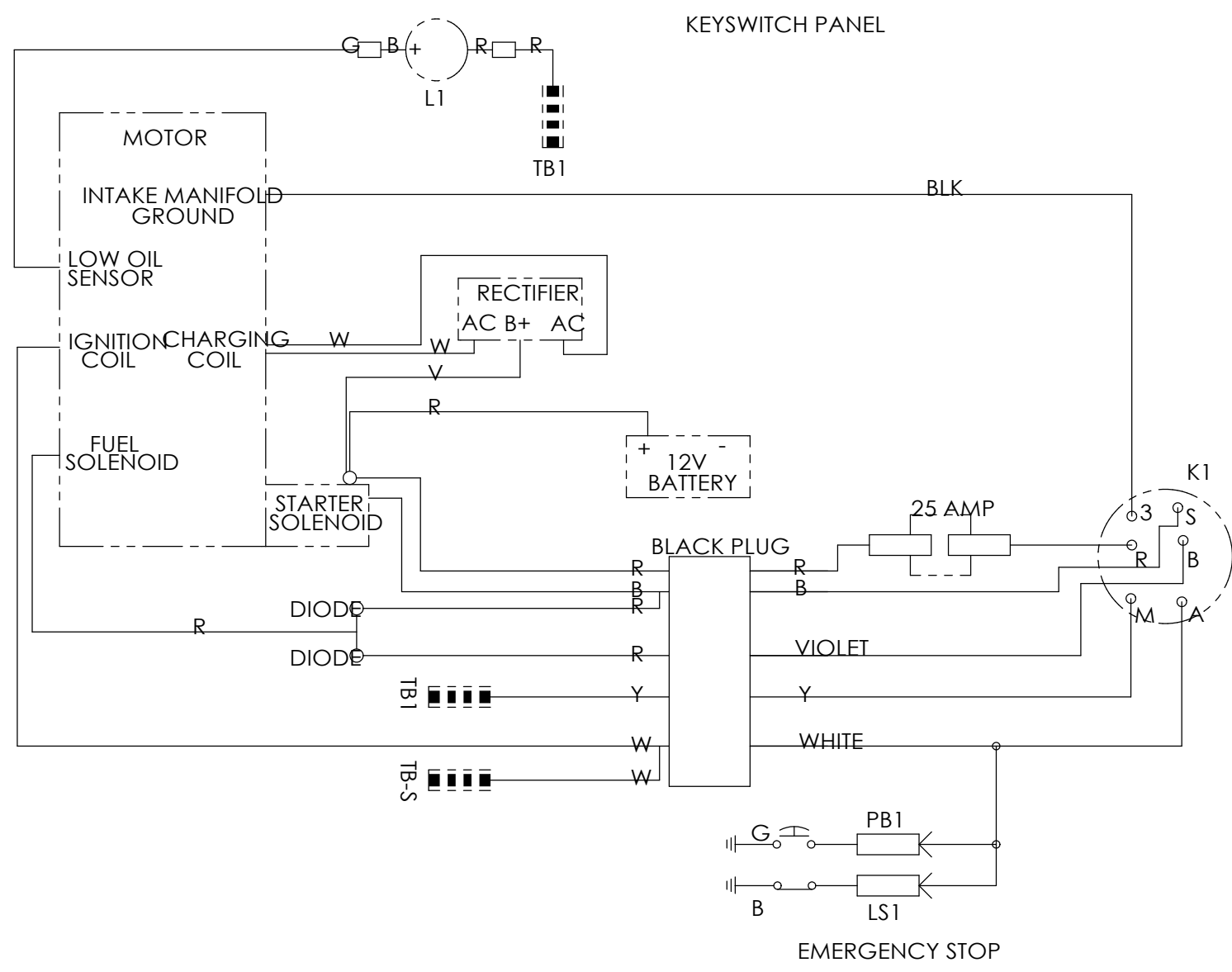
SOFF-CUT INT'L, INC. CLAIMS PROPRIETARY RIGHTS TO THE MATERIAL DISCLOSED IN THIS DOCUMENT. THIS DOCUMENT IS PROVIDED IN CONFIDENCE AND MAY NOT BE REPRODUCED OR DISCLOSED WITHOUT WRITTEN PERMISSION FROM SOFF-CUT INT'L. © COPYRIGHT 2005, SOFF-CUT INT'L, INC. ALL RIGHTS RESERVED.

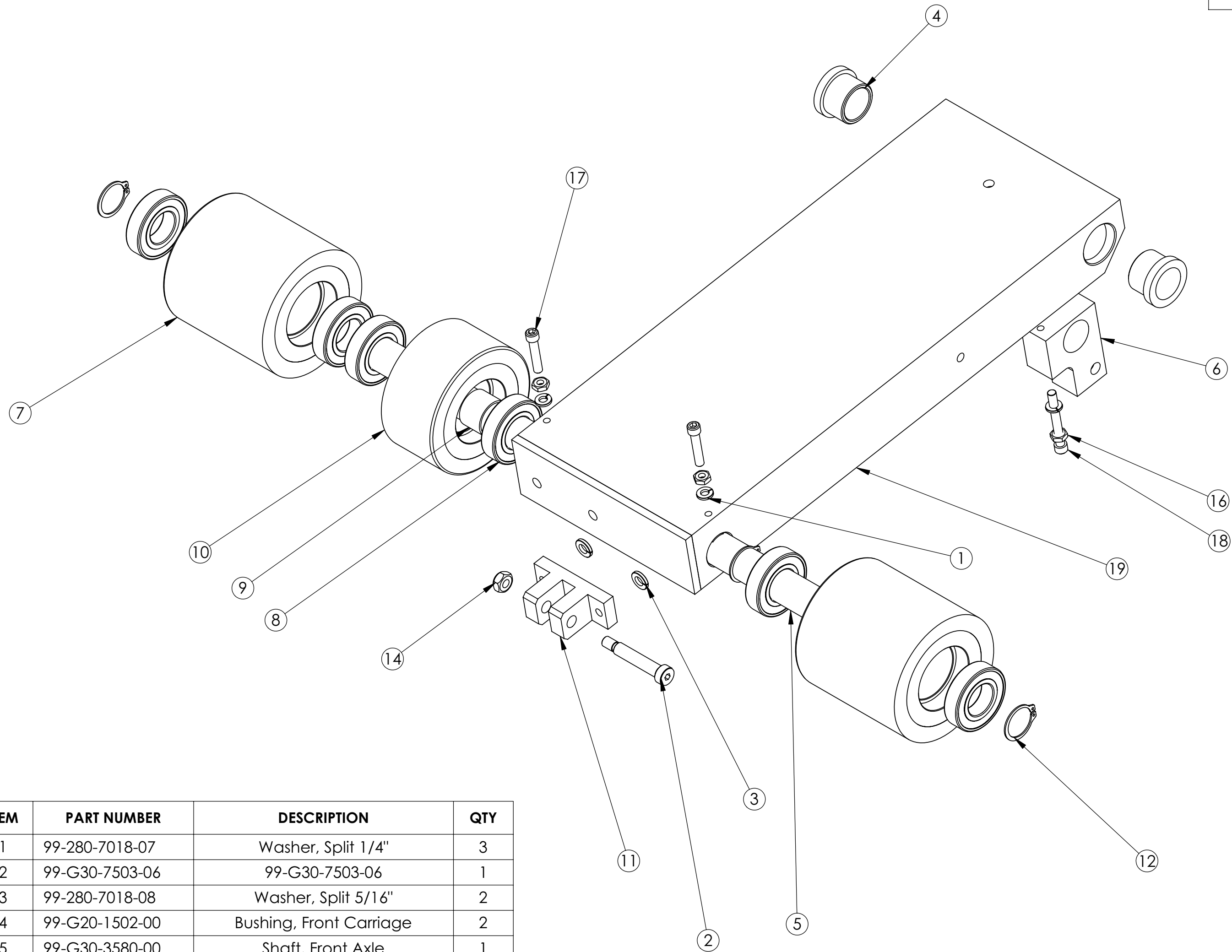


ITEM	PART NUMBER	DESCRIPTION	Default Qty.
1	99-280-7018-09	Washer, Split #10	27
2	99-280-7007-02	FHS, 1/4-20 x 1	2
3	99-280-7018-07	Washer, Split 1/4"	8
4	99-280-7003-04	SHSB, 3/8 X 2 1/4	1
5	99-500-6010-00	Shaft, CP Pivot	1
6	99-G20-8500-06	Bearing, 1.375 OD	2
7	99-500-6003-00	Plate, CP, Side	2
8	99-500-6002-00	X-bar, Actuator Mnt, CP	1
9	99-500-6011-00	Spacer, Pivot Shaft	2
10	99-500-6012-00	Spacer, CP Lever	1
11	99-500-6009-00	Handle, Control	2
12	99-G20-8542-00	Handle Bar Grip	2
13	99-G30-3533-00	Crossbar, Key Dash	1
14	99-X20-8007-00	Control Lever Assy	1
15	99-G20-9516-00	Terminal Block	1
16	99-500-6004-00	PANEL, CONTROL	1
17	99-G10-8534-00	Choke Cable	1
18	99-G20-9532-00	Fuse Holder	1
19	99-G20-8527-03	Key Switch	1
20	99-G15-9001-00	E-Stop	1
21	99-G15-9000-00	VOLT/HOUR METER	1
22	99-G20-9504-00	Tachometer	1
23	99-250-9000-00	COMBO METER/TOTALIZER	1
24	99-G20-9517-01	LED, Red	1
25	99-G20-9508-00	Switch, On / Off / On	4
26	99-G20-9509-00	Switch, On / Off	1
27	99-500-6007-00	Panel, CP Front	1
28	99-500-6008-00	REAR PANEL, CP	1
29	99-280-7012-01	NYLOC NUT #10-24 CAD.PL.	1
30	99-G30-9500-02	Actuator, Handle	1
31	99-500-6094-00	CROSS BAR, CP, REAR	1
32	PEM RAS 832	PEM Angle Fastener, #8-32	2
33	99-280-7005-03	HHB 1/4-20 X .75	1
34	99-G30-3516-00	Bracket, Actuator Hndl	1
35	99-500-6005-00	RIGHT SIDE PANEL, CP	1
36	99-500-6006-00	LEFT SIDE PANEL, CP	1
37	99-280-7006-01	SHCS 10-32 X 3/8	20
38	99-G20-7506-12	SHCS 10-32 X 5/8	2
39	99-280-7006-06	SHCS 1/4-20 X 1 1/4	8
40	99-G20-7506-11	SHCS 10-32 X 1/2	4

SUB-ASSEMBLY BILL OF MATERIAL

SOFF-CUT INTL. INC. CLAIMS PROPRIETARY RIGHTS TO THE MATERIAL DISCLOSED IN THIS DOCUMENT. THIS DOCUMENT IS PROVIDED IN CONFIDENCE AND MAY NOT BE REPRODUCED OR DISCLOSED WITHOUT WRITTEN PERMISSION FROM SOFF-CUT INTL. © COPYRIGHT 2005, SOFF-CUT INTL. INC. ALL RIGHTS RESERVED.

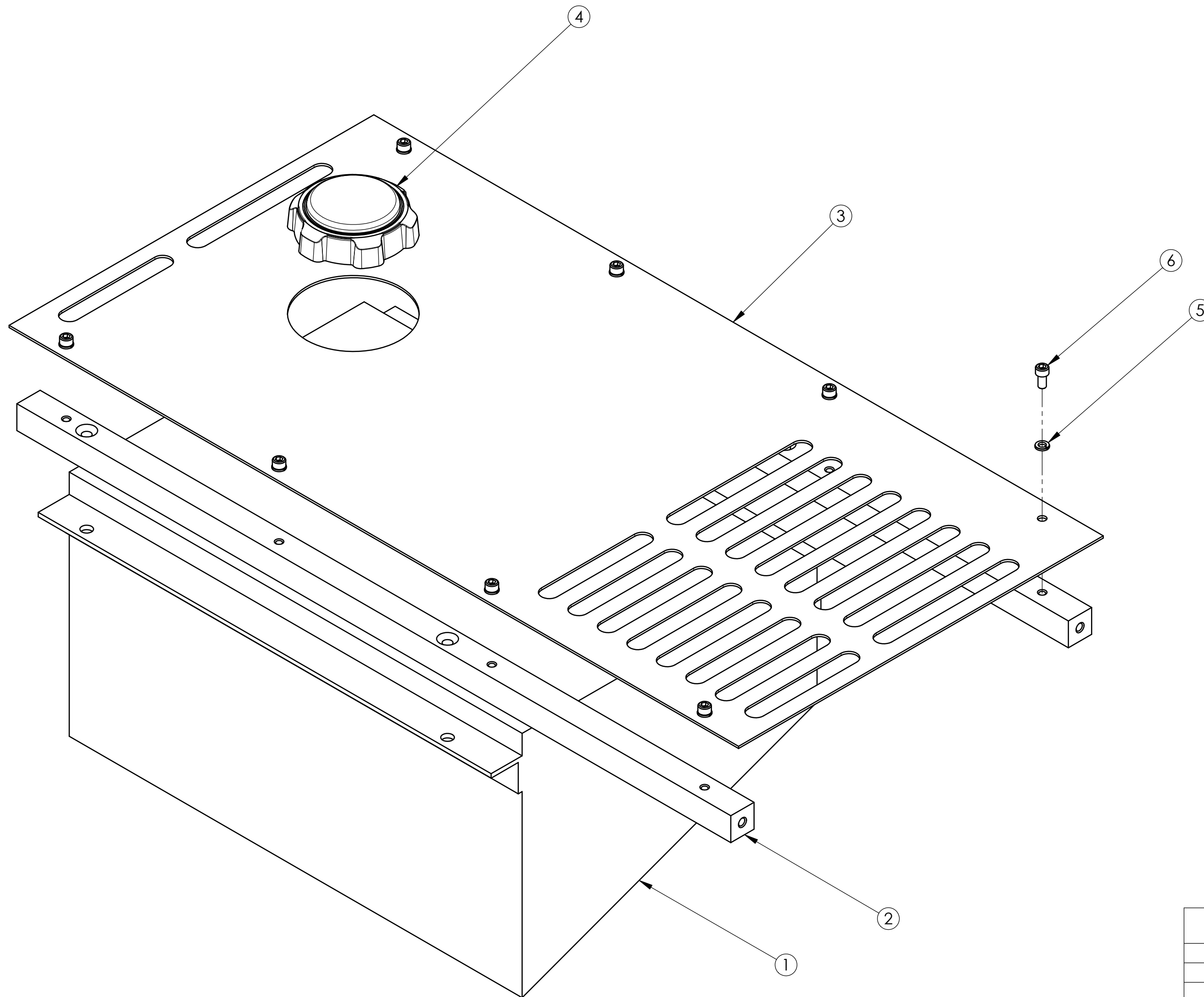




ITEM	PART NUMBER	DESCRIPTION	QTY
1	99-280-7018-07	Washer, Split 1/4"	3
2	99-G30-7503-06	99-G30-7503-06	1
3	99-280-7018-08	Washer, Split 5/16"	2
4	99-G20-1502-00	Bushing, Front Carriage	2
5	99-G30-3580-00	Shaft, Front Axle	1
6	99-500-6042-00	Block, Drive Release	1
7	99-G30-8501-01	Wheel, 4 x 4	2
8	99-G20-8500-06	Bearing, 1.375 OD	6
9	99-G30-3580-01	Spacer, Wheel	1
10	99-G30-8501-02	Wheel, 4 x 2	1
11	99-G30-3514-00	Bracket, Actuator Mount	1
12	99-G20-7514-01	SNAP RING, 1" EXT	4
13	99-280-1089-00	Wear Button	1
14	99-280-7012-03	NYLOC NUT 5/16-18 CAD.PL.	1
15	99-X20-7002-00	HHB 5/16-18 X .75	2
16	99-280-7015-01	NUT, 1/4-20 HEX	3
17	99-280-7006-06	SHCS 1/4-20 X 1.25	2
18	99-G20-7506-02	SHCS 1/4-20 X 2	1
19	99-500-6040-00	Frame, FWC	1

SUB-ASSEMBLY BILL OF MATERIAL

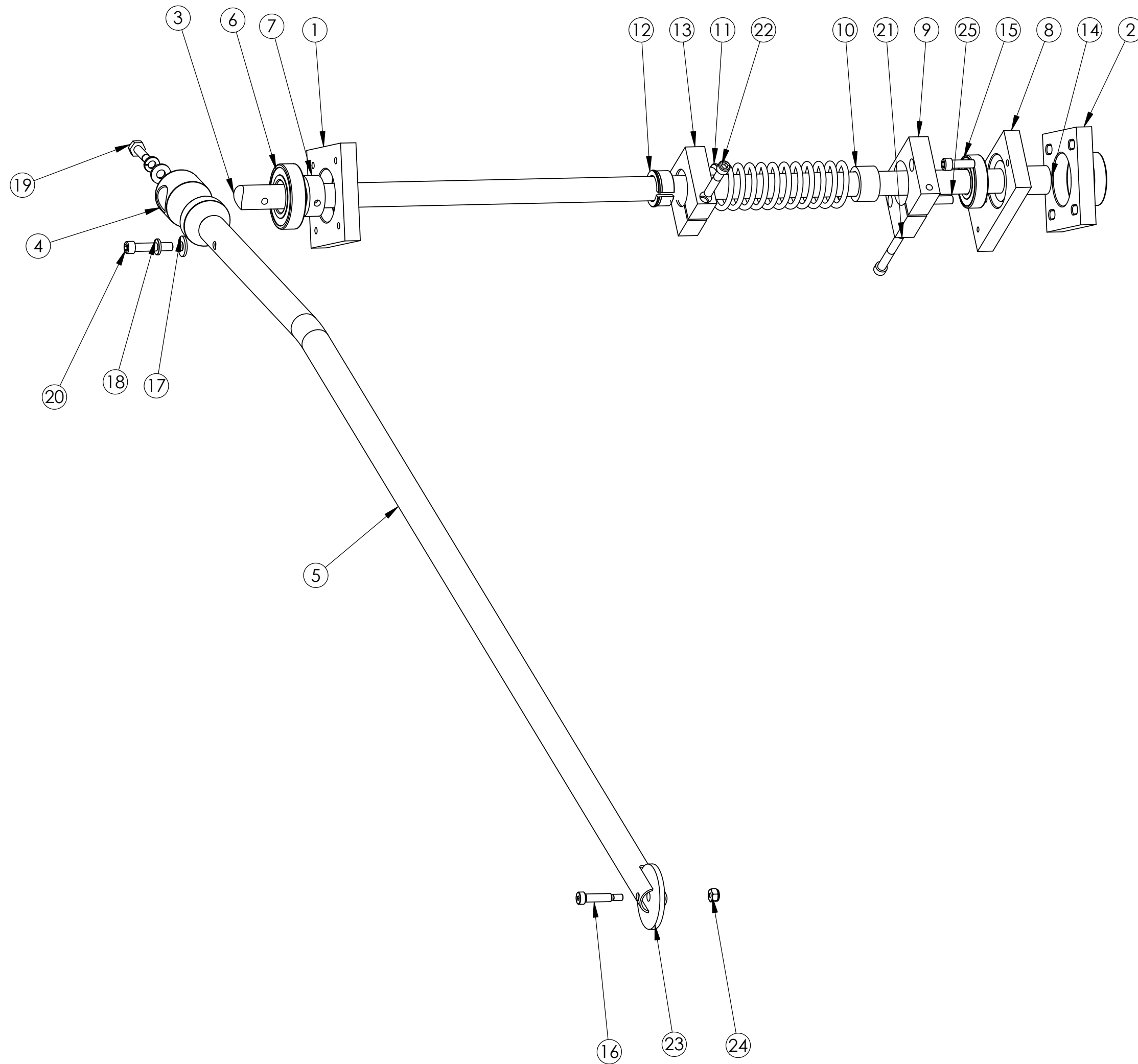
SOFF-CUT INT'L, INC. CLAIMS PROPRIETARY RIGHTS TO THE MATERIAL DISCLOSED IN THIS DOCUMENT. THIS DOCUMENT IS PROVIDED IN CONFIDENCE AND MAY NOT BE REPRODUCED OR DISCLOSED WITHOUT WRITTEN PERMISSION FROM SOFF-CUT INT'L. © COPYRIGHT 2005, SOFF-CUT INT'L, INC. ALL RIGHTS RESERVED.



ITEM NO.	PART NUMBER	DESCRIPTION	QTY.
1	99-G30-8527-02	GAS TANK	1
2	99-G30-3537-04	CROSS BAR REAR TANK	2
3	99-500-6084-00	Cover, Fuel Tank	1
4	99-G42-8538-04	GAS CAP FOR GX4200	1
5	99-280-7018-09	Washer, Split #10	8
6	99-280-7006-01	SHCS 10-32 X 3/8	8

SUB-ASSEMBLY BILL OF MATERIAL

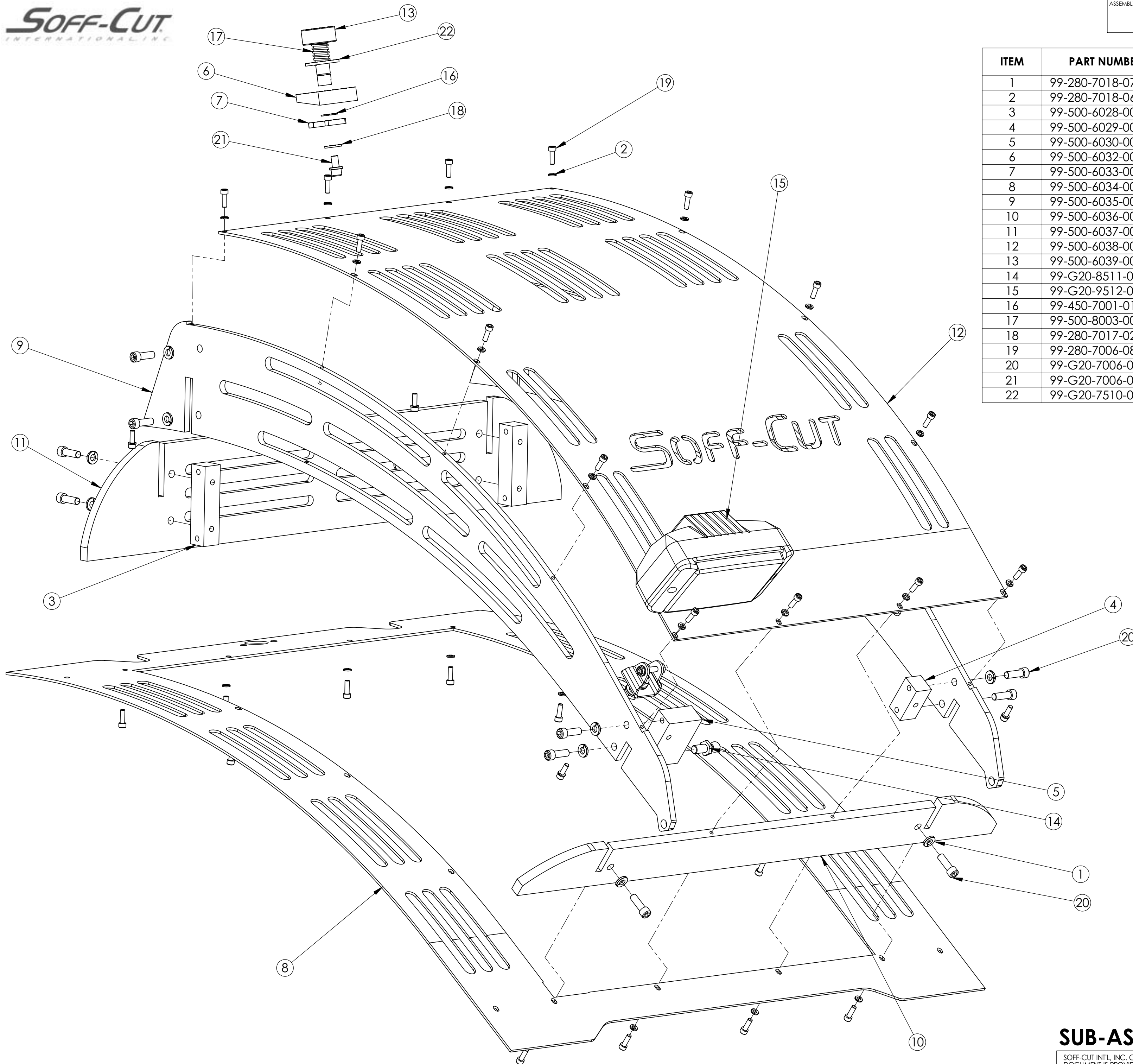
SOFF-CUT INT'L, INC. CLAIMS PROPRIETARY RIGHTS TO THE MATERIAL DISCLOSED IN THIS DOCUMENT. THIS DOCUMENT IS PROVIDED IN CONFIDENCE AND MAY NOT BE REPRODUCED OR DISCLOSED WITHOUT WRITTEN PERMISSION FROM SOFF-CUT INT'L. © COPYRIGHT 2005, SOFF-CUT INT'L, INC. ALL RIGHTS RESERVED.



ITEM NO.	PART NUMBER	DESCRIPTION	QTY.
1	99-G20-1578-00	Block, Guide Shaft Mnt	1
2	99-G20-1579-00	Block, Guide Shaft Mnt	1
3	99-500-6085-00	SHAFT, GUIDE ARM, X5000	1
4	99-G30-3725-00	GUIDE MOUNTING BLOCK	1
5	PX53576	GUIDE TUBE	1
6	99-G20-8500-06	Bearing, 1.375 OD	1
7	99-G20-1629-00	Shaft Collar, Guide Arm	2
8	99-G20-1614-00	Block, Guide Arm Spring	1
9	99-G20-1615-00	Block, Guide Arm Spring	1
10	99-G20-1617-02	Bushing, Guide Arm	1
11	99-G20-8505-08	SPRING, GUIDE ARM	1
12	99-G20-1617-01	Bushing, Split, Guide Arm	1
13	99-G20-1616-00	Block, Guide Arm Return	1
14	99-G20-1606-03	Bushing, Guide Arm	1
15	99-G20-8500-04	Bearing, 1.375 OD	2
16	99-G20-7503-08	SHSB, 1/4 X 7/8	1
17	99-280-7017-02	Washer, Flat 1/4"	2
18	99-280-7018-07	Washer, Split 1/4"	2
19	99-280-7005-03	HHB 1/4-20 X .75	1
20	99-280-7006-06	SHCS 1/4-20 X 1 1/4	1
21	99-G20-7506-02	SHCS 1/4-20 X 2	1
22	99-G20-7506-01	SHCS 1/4-20 X 1 1/2	1
23	99-280-1011-00	Wheel, Guide	1
24	99-280-7012-01	NYLOC NUT #10-24 CAD.PL.	1
25	99-G20-7006-04	SHCS 1/4-20 X 3/4	2

SUB-ASSEMBLY BILL OF MATERIAL

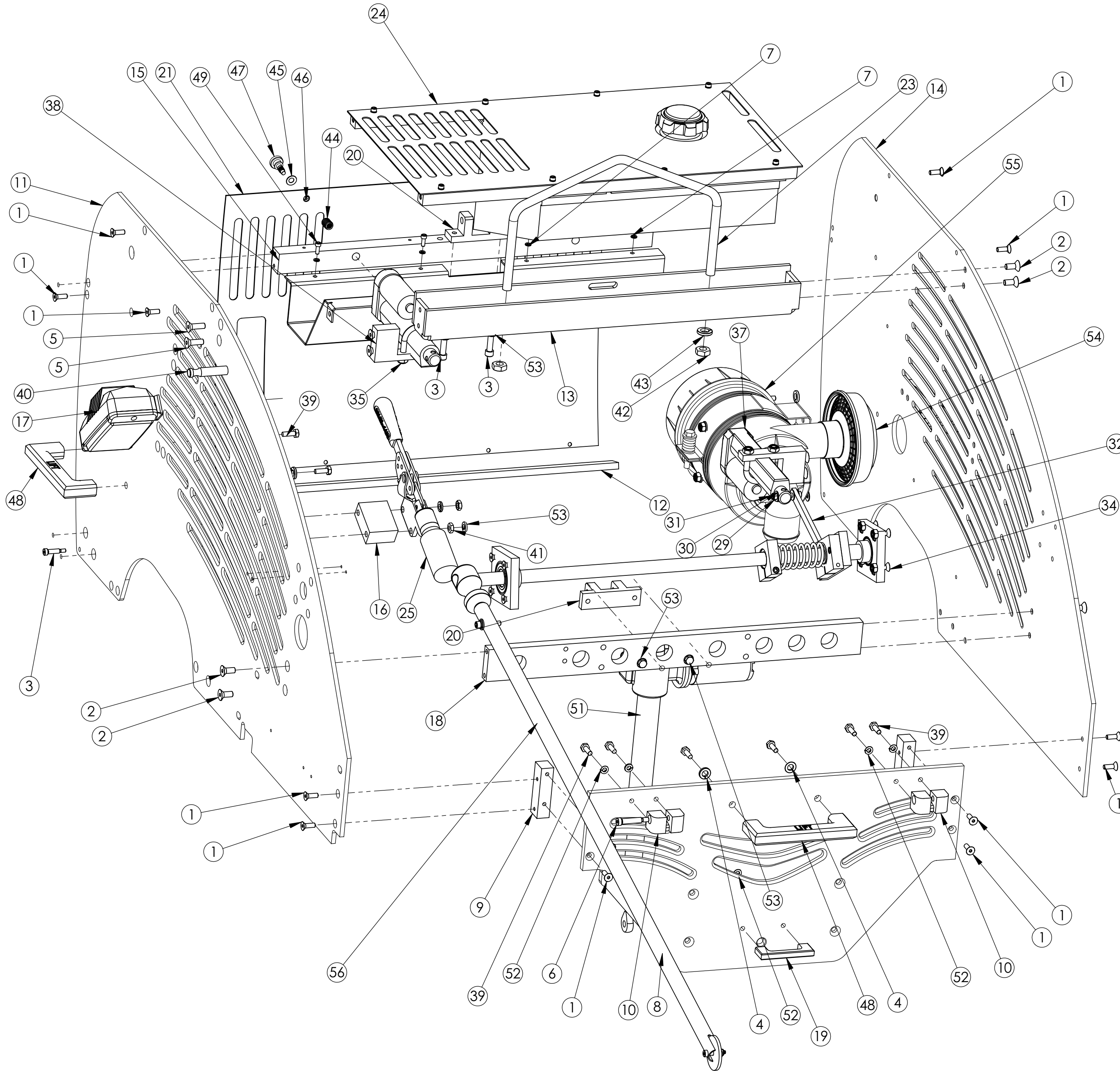
SOFF-CUT INT'L. INC. CLAIMS PROPRIETARY RIGHTS TO THE MATERIAL DISCLOSED IN THIS DOCUMENT. THIS DOCUMENT IS PROVIDED IN CONFIDENCE AND MAY NOT BE REPRODUCED OR DISCLOSED WITHOUT WRITTEN PERMISSION FROM SOFF-CUT INT'L. © COPYRIGHT 2005, SOFF-CUT INT'L, INC. ALL RIGHTS RESERVED.



ITEM	PART NUMBER	DESCRIPTION	QTY
1	99-280-7018-07	Washer, Split 1/4"	15
2	99-280-7018-06	Washer, Split #8	32
3	99-500-6028-00	Block, Corner Hood	2
4	99-500-6029-00	Block, Front Corner Hood	1
5	99-500-6030-00	Block, Gas Shock Mount	1
6	99-500-6032-00	Block, Hood Lock	1
7	99-500-6033-00	Arm, Hood Lock	1
8	99-500-6034-00	Panel, Lower Hood	1
9	99-500-6035-00	Panel, Hood, Side	2
10	99-500-6036-00	Panel, Hood Front	1
11	99-500-6037-00	Panel, Hood Rear	1
12	99-500-6038-00	Panel, Hood Top	1
13	99-500-6039-00	Hood Knob	1
14	99-G20-8511-00	Ball Joint, 5/16 Thread	1
15	99-G20-9512-00	LIGHT, FRONT	1
16	99-450-7001-01	RR, 1/2" ext	1
17	99-500-8003-00	SPRING, HOOD LATCH	1
18	99-280-7017-02	Washer, Flat 1/4"	1
19	99-280-7006-08	SHCS 8-32 X 1/2	32
20	99-G20-7006-04	SHCS 1/4-20 X 3/4	14
21	99-G20-7006-03	SHCS 1/4-20 X 1/2	1
22	99-G20-7510-02	FLAT WASH 1/2 X 1 1/4 OD S.S.	1

SUB-ASSEMBLY BILL OF MATERIAL

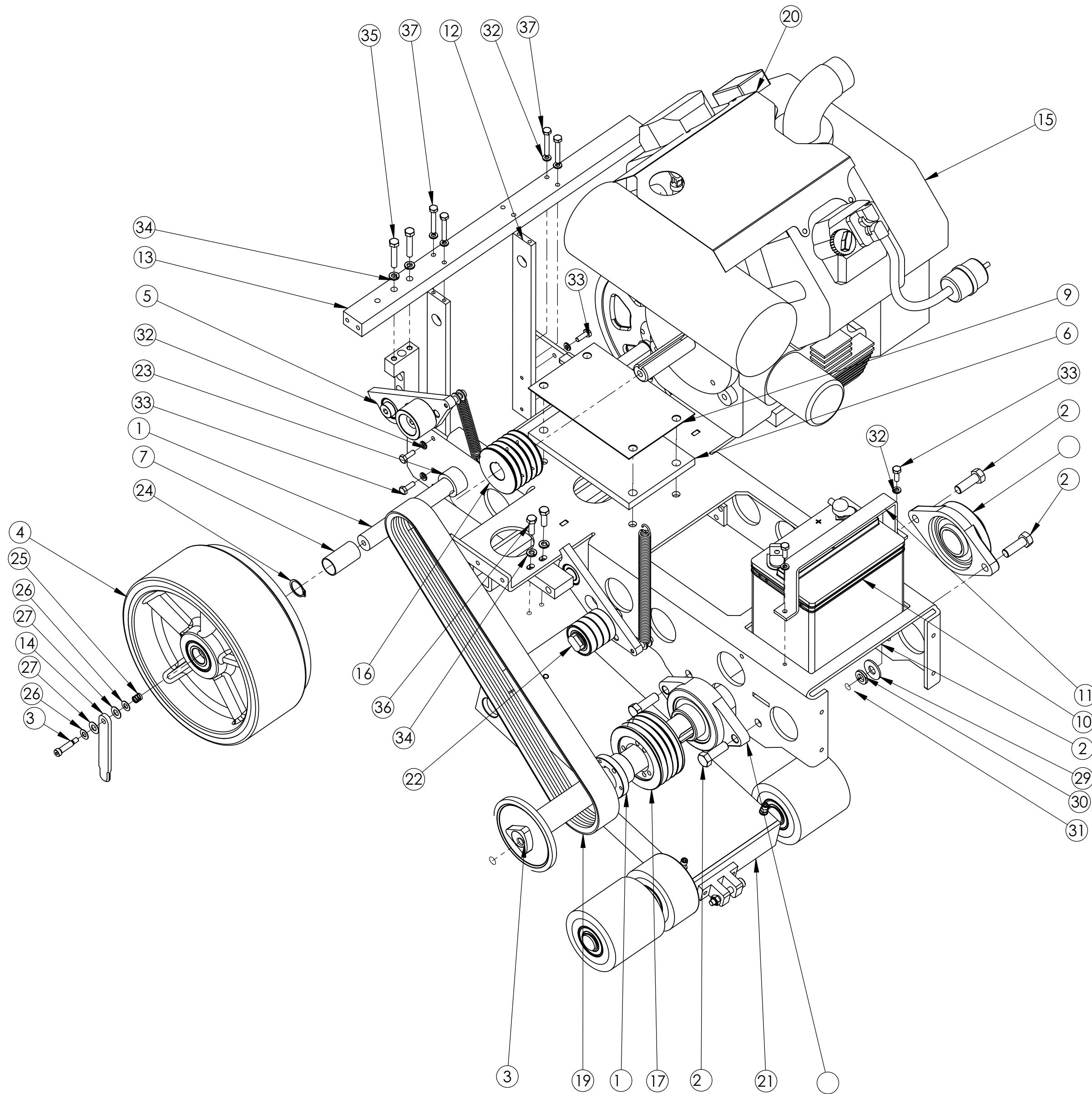
SOFF-CUT INT'L. INC. CLAIMS PROPRIETARY RIGHTS TO THE MATERIAL DISCLOSED IN THIS DOCUMENT. THIS DOCUMENT IS PROVIDED IN CONFIDENCE AND MAY NOT BE REPRODUCED OR DISCLOSED WITHOUT WRITTEN PERMISSION FROM SOFF-CUT INT'L. © COPYRIGHT 2005, SOFF-CUT INT'L, INC. ALL RIGHTS RESERVED.



ITEM	PART NUMBER	DESCRIPTION	QTY
1	99-280-7007-02	FHS, 1/4-20 x 1	20
2	99-280-7007-04	FHS, 5/16-18 x 3/4	8
3	99-G20-7503-02	SHSB, 1/4 X 3/4	2
4	99-G20-7509-03	Washer, Split 3/8"	6
5	99-G20-7507-08	FHS, 5/16-18 x 1	6
6	99-G20-7503-11	SHSB, 5/16 X 1 1/4	2
7	99-280-7018-09	Washer, Split #10	4
8	99-500-6052-00	Front Plate	1
9	99-500-6044-00	Block, Panel Mount	2
10	99-500-6031-00	Block, Hood Mount	2
11	99-500-6051-00	Side Panel, Right	1
12	99-500-6049-00	Stiffener, Rear Panel	1
13	99-500-6050-00	Crossbar, Lifting Hook	1
14	99-500-6053-00	Side Panel, Left	1
15	99-G30-3536-00	Crossbar, Rear Access	1
16	99-G15-2660-00	Spacer, Mtg Block	1
17	99-G20-9512-00	LIGHT, FRONT	1
18	99-G30-3507-03	Crossbar, FW Support	1
19	99-G20-1583-00	Guard, Arbor Lock	1
20	99-G30-3516-00	Bracket, Actuator Hndl	2
21	99-G42-3741-00	Panel, Rear Access CE	1
22	99-500-6054-00	Panel, Rear Bin	1
23	99-250-X1008-38	BAR, LIFTING HOOK	1
24	GAS TANK	Gas Tank Assembly	1
25	99-G15-8000-00	Brake, DeStaCo 628	1
26	99-280-7012-02	NYLOC NUT 1/4-20 CAD.PL.	6
27	99-280-7017-02	Washer, Flat 1/4"	2
28	99-G20-7507-13	FHS, 1/4-20 x 5/8	2
29	99-280-7012-01	NYLOC NUT #10-24 CAD.PL.	1
30	99-280-7020-03	WASHER, 1/4" FLAT DELRIN	7
31	99-G20-7503-XX	SHSB, 1/4 X 1 1/4	1
32	99-G30-3602-01	THROTTLE, EXTENSION	1
33	99-G10-7503-00	SHSB, 1/4 X 3/8	1
34	99-280-7007-03	FHS, 1/4-20 x 1	4
35	99-280-7012-03	NYLOC NUT 5/16-18 CAD.PL.	4
36	99-G20-8532-00	U-Clamp, Exh Pipe/Act	2
37	99-G20-9500-05	Actuator, Handle/Guide	2
38	99-G42-3608-00	ACTUATOR BRACKET	2
39	99-280-7005-03	HHB 1/4-20 X .75	15
40	99-500-6099-00	GUIDE ARM STOP, X5000	1
41	99-G20-7513-08	NUT, 5/16-24 HEX	2
42	99-G20-7513-12	NUT, 1/2-13 HEX	2
43	99-G20-7509-04	Washer, Split 1/2"	2
44	99-G20-8555-00	Insert, 1/2-13 x 5/16-18	2
45	99-G20-8557-00	Washer, Belleville	2
46	99-G20-8556-02	E-clip, 1/4" Dia	2
47	99-G20-1639-01	Knob, BB Cover	2
48	99-G20-1611-00	Handle	3
49	99-G20-7506-11	SHCS 10-32 X 1/2	4
3	99-280-7006-10	SHCS 5/16-18 X 1 1/2	2
51	99-500-9500-00	5-inch Actuator	1
52	99-280-7018-07	Washer, Split 1/4"	7
53	99-280-7018-08	Washer, Split 5/16"	6
54	99-X40-8538-03	HOOD - AIR FILTER	1
55	AIR CLEANER, HD	Kohler Air Cleaner	1
56	Fixed	GUIDE ARM, X-5000	1

SUB-ASSEMBLY BILL OF MATERIAL

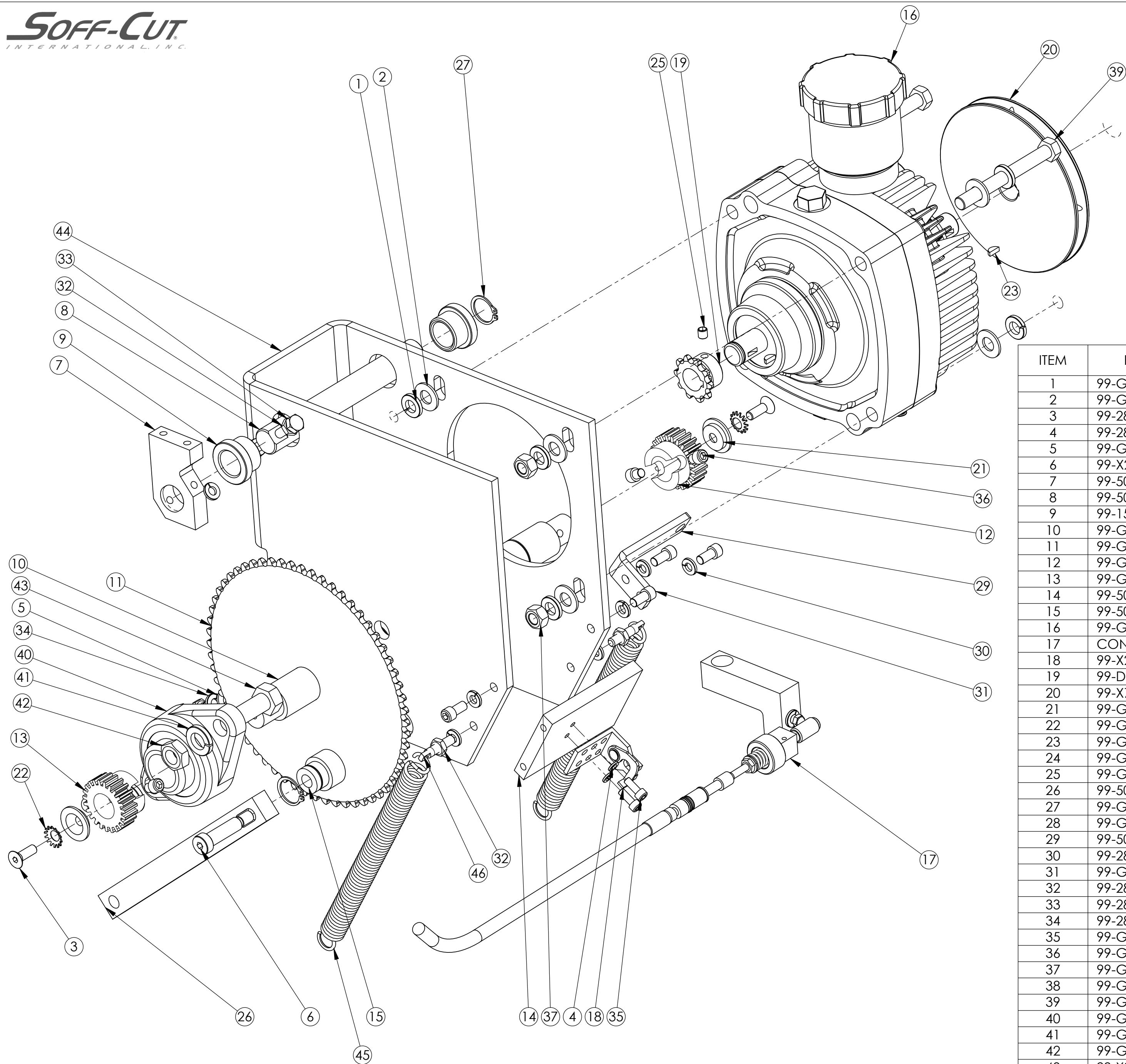
SOFF-CUT INT'L. INC. CLAIMS PROPRIETARY RIGHTS TO THE MATERIAL DISCLOSED IN THIS DOCUMENT. THIS DOCUMENT IS PROVIDED IN CONFIDENCE AND MAY NOT BE REPRODUCED OR DISCLOSED WITHOUT WRITTEN PERMISSION FROM SOFF-CUT INT'L. © COPYRIGHT 2005, SOFF-CUT INT'L, INC. ALL RIGHTS RESERVED.



ITEM NO.	PART NUMBER	DESCRIPTION	Fixed/Q TY.
1	99-500-6041-00	SHAFT, REAR WHEEL	1
2	99-500-6001-00	MAINFRAME ASSY, X-5000	1
3	99-500-6090-00	Blade Shaft, PM5000	1
4	2-G20-1699-05	Pump Belt Tensioner Assy	1
5	99-G42-3710-00	Motor Pad	1
6	99-G30-359 -01	Bushing, FWC	1
7	99-G30- 500-07	Bearing, Blade Shaft 1.5" ID	2
	99-G42-3711-01	Plate, Motor Pad	1
9	99-G30-9501-00	G3000 SEALED AGM BAT	1
10	99-500-6046-00	Bracket, Battery Tiedown	1
11	99-500-6000-00	ARM, PUMP SUPPORT	2
12	99-500-604 -00	Crossbar, Pump	1
13	99-G20-1630-00	Arm, Rear Guide	1
14	99-500- 002-00	SHEAVE, 5 3V 300 BS	1
15	99-500- 000-00	Sheave, 4 3V 412 SH	1
16	99-DGA- 520-0	Bushing, SH 1 1/2	1
17	99-500- 001-00	Belt, 4 3VX475	1
1	99-G20-7514-01	SNAP RING, 1" EXT	4
19	99-G20- 001-04	Spring, Rear Guide	1
20	99-G20-7502-05	Washer, 5/16" Steel	2
21	99-2 0-7020-04	Washer, 3/ Delrin	2
22	99-X20-7002-01	HHB 1/2-13 X 1 1/2 GR	4
23	99-2 0-7005-03	HHB 1/4-20 X .75	6
24	99-G20-7505-21	HHB 5/16-1 X 1.75	2
25	99-G20-7505-06	HHB 5/16-1 X 1	2
26	99-G92-7505-03	HHB 1/4-20 X 1.75	4
27	99-G20-7509-04	Washer, Split 1/2"	4
2	99-G20-7513-12	NUT, 1/2-13 HEX	4
29	99-G20-7503-12	SHSB, 5/16 X 1	1
30	Blade Belt Tensioner Assy	Blade Belt Tensioner Assy	1
31	99-500-6096-00	HEAT SHROUD, KOHLER, 27HP	1
32	99-500-5 27-00	Motor, 27 Hp, V-Twin	1
33	99-500-60 6-00	SPACER, DELRIN	2
34	99-2 0-701 -07	Washer, Split 1/4"	10
35	99-2 0-701 -0	Washer, Split 5/16"	4
36	99-G20-7510-02	FLAT WASH 1/2 X 1 1/4 OD S.S.	4
37	WHEEL ASSEMBLY	Wheel Assy, Rear	2
3	FRONT WHEEL CARRIAGE	Front Wheel Carriage	1

SUB-ASSEMBLY BILL OF MATERIAL

SOFF-CUT INT'L, INC. CLAIMS PROPRIETARY RIGHTS TO THE MATERIAL DISCLOSED IN THIS DOCUMENT. THIS DOCUMENT IS PROVIDED IN CONFIDENCE AND MAY NOT BE REPRODUCED OR DISCLOSED WITHOUT WRITTEN PERMISSION FROM SOFF-CUT INT'L. © COPYRIGHT 2005, SOFF-CUT INT'L, INC. ALL RIGHTS RESERVED.

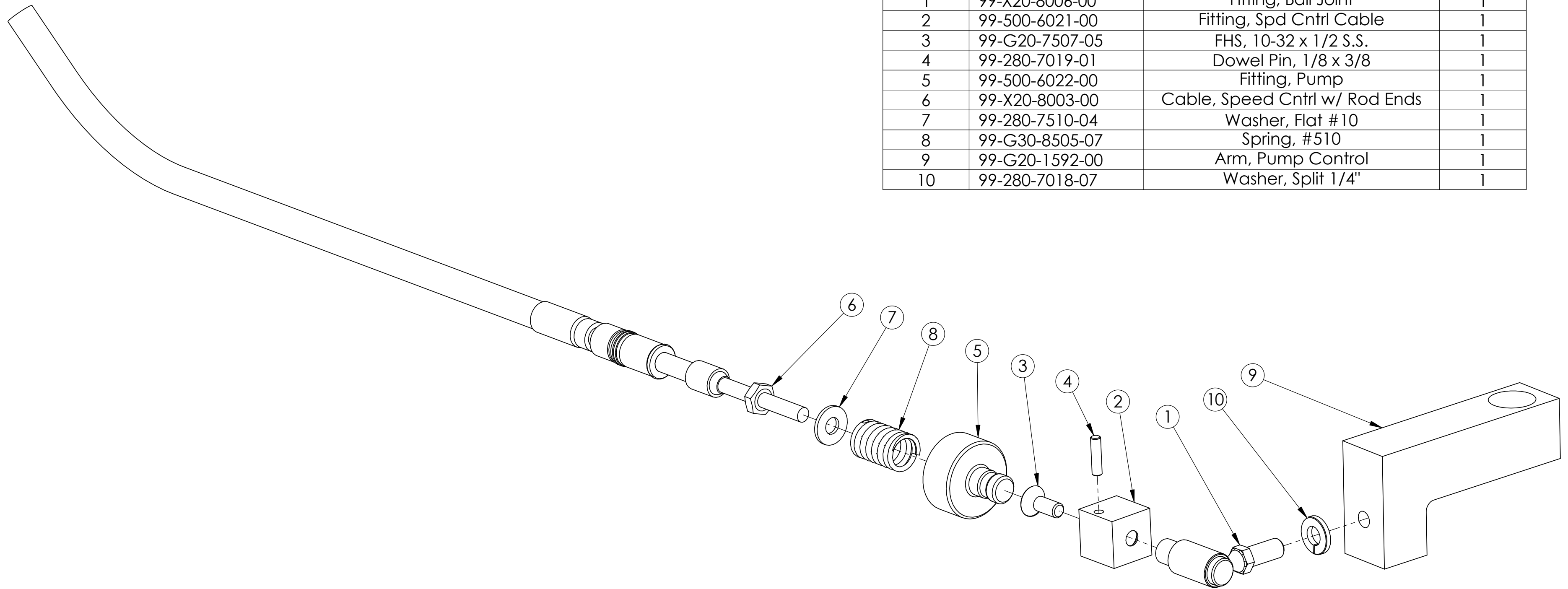


ITEM	PART NUMBER	DESCRIPTION	QTY
1	99-G20-7509-03	Washer, Split 3/8"	8
2	99-G20-7501-01	Washer, Flat 3/8"	8
3	99-280-7007-02	FHS, 1/4-20 x 1	2
4	99-280-7018-09	Washer, Split #10	2
5	99-G10-7501-00	Washer, Flat 5/16"	1
6	99-X20-7000-00	SHSB, 3/8 x 1 1/4	1
7	99-500-6014-00	Block, Pump Pivot Mount	1
8	99-500-6018-00	Shaft, Pump Pivot	1
9	99-150-2104-00	Bushing	2
10	99-G30-3593-00	Shaft, Pump Drive	1
11	99-G20-8516-00	Sprocket, 60T	1
12	99-G30-8520-02	Gear, 24T, S1624	1
13	99-G30-8520-04	Gear, 23T, S1623	1
14	99-500-6017-00	Plate, Pump Support	1
15	99-500-6020-00	Bushing, Drive Release	1
16	99-G20-8512-00	Hydrostatic Pump	1
17	CONTROL CABLE ASSY	Cable, Speed Control	1
18	99-X20-8005-00	Bracket, Cntrl Cable	1
19	99-DGA-8515-00	Sprocket, 10T	1
20	99-X75-8007-00	Sheave, 3V 500	1
21	99-G30-3593-01	Washer, Drive Shaft End	2
22	99-G10-7501-02	Washer, Ext Tooth, 5/16	2
23	99-G20-7520-01	Key, Woodruff #3	2
24	99-G20-8527-09	Key, 1/4 x 1/4 x 2"	1
25	99-G20-7516-02	Set Screw, 1/4-20 x 1/4	1
26	99-500-6015-00	Arm, Pump Release	1
27	99-G20-7514-02	RR, 3/4" ext	2
28	99-G20-7514-01	SNAP RING, 1" EXT	2
29	99-500-6016-00	ARM, PROX. SENSOR MOUNT	1
30	99-280-7018-07	Washer, Split 1/4"	9
31	99-G20-7006-03	SHCS 1/4-20 X 1/2	4
32	99-280-7015-01	NUT, 1/4-20 HEX	5
33	99-280-7005-03	HHB 1/4-20 X .75	2
34	99-280-7018-08	Washer, Split 5/16"	1
35	99-G20-7506-11	SHCS 10-32 X 1/2	2
36	99-G30-7506-04	SHCS 1/4-20 X 1/4	4
37	99-G20-7513-01	NUT, 3/8-16 HEX	4
38	99-G10-7504-02	HHB 1/4-20 X 1	1
39	99-G20-7505-08	HHB 3/8-16 X 3.5	4
40	99-G10-8000-01	Bearing, Flange, 3/4" ID	2
41	99-G20-7509-04	Washer, Split 1/2"	4
42	99-G20-7513-12	NUT, 1/2-13 HEX	4
43	99-X20-7002-01	HHB 1/2-13 X 1 1/2 GR 8	4
44	99-500-6013-00	Frame, Pump	1
45	99-G30-8505-08	5460 SPRG FOR PUMP TENSIONER	2
46	99-G30-8505-00	Spring Anchor, 1/4-20 x 1	2

SUB-ASSEMBLY BILL OF MATERIAL

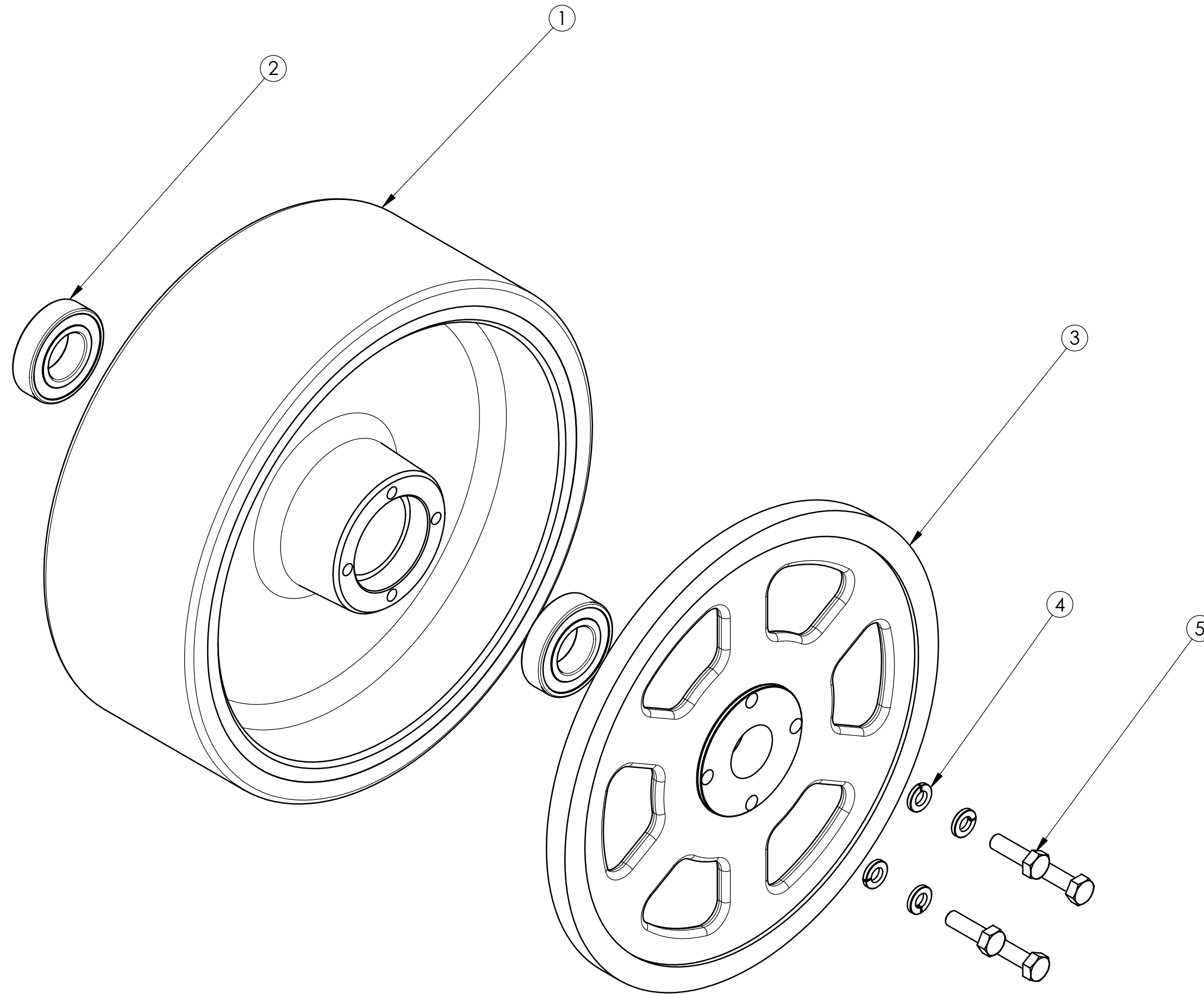
SOFF-CUT INT'L, INC. CLAIMS PROPRIETARY RIGHTS TO THE MATERIAL DISCLOSED IN THIS DOCUMENT. THIS DOCUMENT IS PROVIDED IN CONFIDENCE AND MAY NOT BE REPRODUCED OR DISCLOSED WITHOUT WRITTEN PERMISSION FROM SOFF-CUT INT'L. © COPYRIGHT 2005, SOFF-CUT INT'L, INC. ALL RIGHTS RESERVED.

ITEM NO.	PART NUMBER	DESCRIPTION	QTY.
1	99-X20-8006-00	Fitting, Ball Joint	1
2	99-500-6021-00	Fitting, Spd Cntrl Cable	1
3	99-G20-7507-05	FHS, 10-32 x 1/2 S.S.	1
4	99-280-7019-01	Dowel Pin, 1/8 x 3/8	1
5	99-500-6022-00	Fitting, Pump	1
6	99-X20-8003-00	Cable, Speed Cntrl w/ Rod Ends	1
7	99-280-7510-04	Washer, Flat #10	1
8	99-G30-8505-07	Spring, #510	1
9	99-G20-1592-00	Arm, Pump Control	1
10	99-280-7018-07	Washer, Split 1/4"	1



SUB-ASSEMBLY BILL OF MATERIAL

SOFF-CUT INT'L, INC. CLAIMS PROPRIETARY RIGHTS TO THE MATERIAL DISCLOSED IN THIS DOCUMENT. THIS DOCUMENT IS PROVIDED IN CONFIDENCE AND MAY NOT BE REPRODUCED OR DISCLOSED WITHOUT WRITTEN PERMISSION FROM SOFF-CUT INT'L. © COPYRIGHT 2005, SOFF-CUT INT'L, INC. ALL RIGHTS RESERVED.



ITEM NO.	PART NUMBER	DESCRIPTION	QTY.
1	99-G40-8501-03	Wheel, 11"	1
2	99-G20-8500-06	Bearing, 1.375 OD	2
3	99-G30-8520-01	C16160 SPUR GEAR (10")	1
4	99-280-7018-08	Washer, Split 5 16"	4
5	99-G20-7505-06	HHB 5 16-18 X 1	4

SUB-ASSEMBLY BILL OF MATERIAL

SOFF-CUT INT'L. INC. CLAIMS PROPRIETARY RIGHTS TO THE MATERIAL DISCLOSED IN THIS DOCUMENT. THIS DOCUMENT IS PROVIDED IN CONFIDENCE AND MAY NOT BE REPRODUCED OR DISCLOSED WITHOUT WRITTEN PERMISSION FROM SOFF-CUT INT'L. © COPYRIGHT 2005, SOFF-CUT INT'L, INC. ALL RIGHTS RESERVED.