



Diamond Tools and Equipment



Product Catalog

icsdiamondtools.com



695 PG - Gas
Ductile Iron Pipe cut
Portland, OR - 2010

695XL-PG

Built to provide the best combination of performance and portability for cutting in-ground utility pipe, the 695XL-PG Gas Power Cutter with PowerGrit® chain will change the way you cut pipe. The 695XL-PG offers unmatched power to weight ratio, allowing you to cut up to 16" deep from one side into ductile iron, cast iron, PVC, HDPE and Insituform lining. All our power heads are designed for wet cutting and have integrated water delivery systems that reduce airborne particles during the cut. The 695XL-PG is capable of cutting the full line of 16" FORCE4® concrete cutting chains, meaning you can use the power cutter on masonry, stone, and even reinforced concrete - perfect for pipe taps, utility vaults, bridge work, and other utility applications.



Gas Power

695XL TECHNICAL SPECIFICATIONS

Bar Cutting Depth	16 in/40cm
Powerhead Weight	21 lbs/9.6 kg
Engine Speed	9300 +/- 150 rpm (max)
Idling Speed	2700 +/- 100 rpm
Horsepower	6.4 hp (4.8 kW) @ 9000 rpm
Engine Type	2-stroke, single cylinder, air cooled
Displacement	5.7 cu inch (94 cc)
Powerhead Dimensions	18"L x 14" H x 12" W (46 cm x 36 cm x 30 cm)
Guaranteed Sound Power Level, Lwa (1)	115 dB(A); (Kwa = 1.0 dB(A))
Sound Pressure Level, at Operator's Ear Lwa (1)	104.6 dB(A); (K = 1.0 dB(A))
Vibration, a _h , eq Concrete Cutting (2)	3.6 m/s ² (K=0.2 m/s ²) Front Handle 3.1 m/s ² (K=0.2 m/s ²) Rear Handle
Vibration, a _h , eq Pipe Cutting (2)	5.62 m/s ² (K=0.2 m/s ²) Front Handle 5.28 m/s ² (K=0.2 m/s ²) Rear Handle
Water Supply Requirement	Minimum of 20 psi (1.4 bar)
Water Flow Requirement	Minimum: 2 gpm (8 lpm)
Fuel Mix Ratio	50:1 (2%) fuel-to-oil
Fuel Capacity	0.26 gal (1.0 liter)

(1) Measured in accordance with ANSI S12.51-2012/ISO3741:2010

(2) Measured in accordance with ISO5349-1:2001, ISO22867:2011 and ISO19432:2012

695XL-F4/PG GAS POWER CUTTER AND CONSUMABLES

PART NUMBER	DESCRIPTION
575826	ICS 695XL F4 Powerhead
575827	ICS 695XL-16 PG Package with 16 inch FORCE4 Guidebar & PowerGrit Chain
547641	ICS PowerGrit chain 12 inch
608233	New! ICS PowerGritXL chain 12 inch
537764	ICS PowerGrit chain 16 inch
607644	New! ICS PowerGritXL chain 16 inch
553208	ICS 695F4 Guidebar 12 inch
524490	ICS 695F4 Guidebar 16 inch
525496	ICS 695F4 Drive Sprocket
543904	ICS 695XL - F4/PG Premium Tensioner Kit

Gas Power

680ES TECHNICAL SPECIFICATIONS

Bar Cutting Depth	10in/25cm
Powerhead Weight	21 lbs/9.6 kg
Engine Speed	11500 +/- 500 rpm (max)
Idling Speed	2800-3200 rpm
Horsepower	5 hp (3.7 kW)
Engine Type	2-stroke, single cylinder, air cooled
Displacement	4.7 cu inch (76.5 cc)
Powerhead Dimensions	18"L x 11.5" H x 10" W (46 cm x 29 cm x 25 cm)
Guaranteed Sound Power Level, Lwa (1)	117 dB(A); (Kwa = 3.0 dB(A))
Sound Pressure Level, at Operator's Ear Lwa (1)	101.0 dB(A); (K = 2.0 dB(A))
Vibration, a hv, eq Concrete Cutting (2)	7.2 m/s ² (K=1.0 m/s ²) Front Handle 8.5 m/s ² (K=1.0 m/s ²) Rear Handle
Water Supply Requirement	Minimum of 20 psi (1.4 bar)
Water Flow	Minimum: 2 gpm (8 lpm)
Fuel Mix Ratio	50:1 (2%) fuel-to-oil
Fuel Capacity	0.26 gal (0.88 liter)

(1) Measured in accordance with ANSI S12.51-2012/ISO3741:2010
 (2) Measured in accordance with ISO5349-1:2001 and ISO22867:2011



680ES - Gas Ductile Iron Pipe cut Portland, OR - 2016

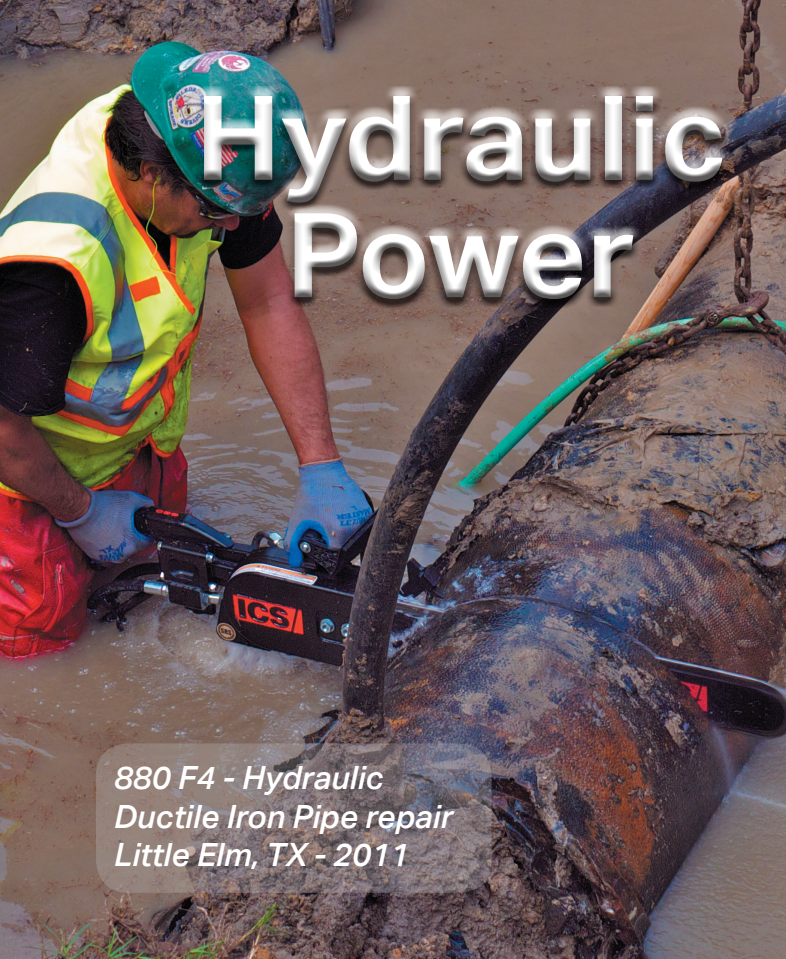
680ES-PG

Built to provide a combination of performance and portability for cutting in-ground utility pipe, the 680ES-PG gas power cutter with PowerGrit chain will change the way you cut pipe. This affordably priced gas power cutter, allows you to cut up to 10" deep from one side into ductile iron, cast iron, PVC, HDPE and Insituform lining and is also designed to run the full line of MAX series chains. All our power heads are designed for wet cutting and have integrated water delivery systems that reduce airborne particles during the cut. With a quick switch of guidebar, chain and drive sprocket, you have the ability to use this power cutter in masonry, stone and even reinforced concrete. Making it the most cost effective, versatile tool in your arsenal.



680ES-PG GAS POWER CUTTERS AND CONSUMABLES

PART NUMBER	DESCRIPTION
580423	ICS 680ES-10 PG Gas Power Cutter Package, with 10 inch Guidebar & PowerGrit Chain
608234	New! ICS PowerGritXL-24 chain, 10 inch
580424	ICS PowerGrit-24 chain 10 inch
579158	ICS 680 PowerGrit Guidebar 10 inch
525496	ICS 680ES PowerGrit Drive Sprocket
73935	ICS 680ES Premium Tensioner Kit



Hydraulic Power

880 F4 - Hydraulic Ductile Iron Pipe repair Little Elm, TX - 2011



890 Series

If you're looking for the highest level of performance and cutting capability, look no further. The 890PG Hydraulic-Power Cutter with PowerGrit® chain offers cutting depths of up to 25" in ductile iron, cast iron, PVC, HDPE and Insituform lining. The deep cutting ability of the 890PG allows the operator to make a single cut from one side meaning less excavation is required. All our power heads are designed for wet cutting and have integrated water delivery systems that reduce airborne particles during the cut. The 890PG is capable of operating the full line of FORCE4® concrete cutting chains, meaning you can use the power cutter on masonry, stone, and even reinforced concrete - perfect for pipe taps, utility vaults, bridge work, and other utility applications.

890 PG HYDRAULIC POWER CUTTER AND CONSUMABLES

PART NUMBER	DESCRIPTION
566110	ICS 890F4 Powerhead 8 gpm, 1 ft hose whips
566355	ICS 890F4 Powerhead 8 gpm, 8 ft hose whips
566112	ICS 890F4 Powerhead 12 gpm, 1 ft hose whips
566116	ICS 890F4 Powerhead 12 gpm, 8 ft hose whips
566123	ICS 890PG-15 Pkg 8 gpm, 1 ft hose whips, case
566710	ICS 890PG-15 Pkg 8 gpm, 8 ft hose whips, case
566125	ICS 890PG-15 Pkg 12 gpm, 1 ft hose whips, case
566712	ICS 890PG-15 Pkg 12 gpm, 8 ft hose whips, case
566124	ICS 890PG-20 Pkg 8 gpm, 1 ft hose whips, case
566711	ICS 890PG-20 Pkg 8 gpm, 8 ft hose whips, case
566126	ICS 890PG-20 Pkg 12 gpm, 1 ft hose whips, case
566716	ICS 890PG-20 Pkg 12 gpm, 8 ft hose whips, case
547641	ICS PowerGrit Chain 10 inch
537764	ICS PowerGrit Chain 15 inch
537765	ICS PowerGrit Chain 20 inch
545017	ICS PowerGrit Chain 25 inch
608233	New! ICS PowerGritXL Chain 10 inch
607664	New! ICS PowerGrit XL Chain 15 inch
608216	New! ICS PowerGrit XL Chain 20 inch
608215	New! ICS PowerGrit XL Chain 25 inch
529829	ICS 890F4 Guidebar 10 inch
523080	ICS 890F4 Guidebar 15 inch
529767	ICS 890F4 Guidebar 20 inch
525320	ICS 890F4 Guidebar 25 inch
565065	ICS 890F4 Drive Sprocket
565066	ICS 890F4-FLUSH Drive Sprocket
70636	890F4 Tensioner Kit
523946	890F4-FL Tensioner Kit

890F4/PG TECHNICAL SPECIFICATIONS

	8 gpm (30 lpm)	12 gpm (45 lpm)
Powerhead Weight (1' hose whips)	23.5 lbs (10.6 kg)	
L / H / W	23 in (58.5 cm)/10.5 in (26.5 cm)/ 9.5 in (24 cm)	
Hydraulic Supply	8 gpm (30 lpm) @ 2,500 psi (172.5 bar)	12 gpm (45 lpm) @ 2,500 psi (172.5 bar)
Hydraulic Fluid Requirements (Type)	PC HYDREX MV32 or equivalent	
Water Supply Requirements	Minimum: 20 psi (1.4 bar)	
Water Flow	2 gpm (8 lpm) minimum	
Operating Speed	6,100 rpm (avg. free running) 5,500 sfm (avg. free running chain)	6,500 rpm (avg. free running) 5,800 sfm (avg. free running chain)
Torque*	7.0 ft-lbs (9.6 Nm)	10.0 ft-lbs (13.5 Nm)
Horsepower ^{(1)*}	6 hp (4.5 kW)	8 hp (6.0 kW)
Guaranteed Sound Power Level $L_{wa}^{(2)}$	107 dB(A) (K=0.2 dB(A))	
Equivalent Sound Pressure at Operator's Ear $L_{pA}^{(2)}$	98 dB(A) (K=0.7 dB(A))	
Vibration $a_{hv,eq}$ Concrete Cutting ⁽³⁾	2.0 m/s ² (K=0.1 m/s ²) Front Handle 6.0 m/s ² (K=1.4 m/s ²) Rear Handle	
Vibration $a_{hv,eq}$ PowerGrit Cutting ⁽³⁾	4.6 m/s ² (K=0.1 m/s ²) Front Handle 4.8 m/s ² (K=0.3 m/s ²) Rear Handle	

(1) Measured using 18HP hydraulic power pack (8 gpm/30 lpm) and 23HP hydraulic power pack (12 gpm/45 lpm) at 2000psi/138 bar.

(2) Measured in accordance with ISO3744:2010

(3) Measured in accordance with ISO5349-1:2001

* Output ratings based on maximum input conditions and efficiency assumptions and may vary depending on power supply.

701-A TECHNICAL SPECIFICATIONS

Powerhead Weight	29 lbs (13 kg)
Bar Cutting Depth	10 in/25 cm, 15 in/38 cm, 20 in/50 cm, 25 in/63 cm FORCE4 & PowerGrit
Powerhead Dimensions	20" L x 10.5" H x 12" W (58.5 cm x 26.5 cm x 30.5 cm)
Air Motor Power	6.5hp (5 kW)
Air Supply Requirements (maximum)	90 psi (6 bar) 124 cfm (3.5 m ³ /min)
Motor lubrication	Resin and acid-free SAE 5 W to SAE 10 W oil
Water Supply Requirements	Minimum: 20psi (1.4 bar)
Water Flow	Minimum: 2 gpm (8 lpm)
Operating Speed	5,700 rpm (average free running) 4,900 sfm (average free running chain)
Vibration ahv, eq Concrete Cutting ⁽²⁾	Front handle: 5.09 m/s ² (K=0.2 m/s ²) Rear handle: 5.07 m/s ² (K=0.2 m/s ²)
Vibration ahv, eq PowerGrit Cutting ⁽²⁾	Front handle: 4.58 m/s ² (K=0.2 m/s ²) Rear handle: 4.43 m/s ² (K=0.2 m/s ²)
Guaranteed Sound Power Level Lwa (1)	113 dB(A); (Kwa=0.5 dB(A))

(1) Measured in accordance with ANSI S12.51-2012/ISO3741:2010
(2) Measured in accordance with ISO5349-1:2001 and ISO22867:2011

701-A PNEUMATIC POWER CUTTERS AND CONSUMABLES	
PART NUMBER	DESCRIPTION
573511	ICS 701-A Powerhead
574171	ICS 701-A Package with 15 inch Guidebar & PowerGrit Chain
574172	ICS 701-A Package with 20 inch Guidebar & PowerGrit Chain
547641	ICS PowerGrit Chain 10 inch
537764	ICS PowerGrit Chain 15 inch
537765	ICS PowerGrit Chain 20 inch
545017	ICS PowerGrit Chain 25 inch
608233	New! ICS PowerGritXL Chain 10 inch
607664	New! ICS PowerGrit XL Chain 15 inch
608216	New! ICS PowerGrit XL Chain 20 inch
608215	New! ICS PowerGrit XL Chain 25 inch
529829	ICS 701-A Guidebar 10 inch
523080	ICS 701-A Guidebar 15 inch
529767	ICS 701-A Guidebar 20 inch
525320	ICS 701-A Guidebar 25 inch
565065	ICS 701-A Drive Sprocket
575013	Airpac, pneumatic power cutter oiler
575130	Oiler, with hose whip 3/4 x 6ft.
70636	Tensioner Kit



701A - Pneumatic
Ductile Iron pipe cutting
Portland, OR - 2015

701-A

Built tough to stand up to everyday use in the harsh environment of utility pipe cutting. The ICS powerful pneumatic power cutter with PowerGrit® chain offers cutting depths of up to 25" in ductile iron, cast iron, PVC, HDPE and Insituform lining. The deep cutting ability of the 701-A allows the operator to make a single cut from one side meaning less excavation is required. All our powerheads are designed for wet cutting and have integrated water delivery systems that reduce airborne particles during the cut. The 701-A is capable of operating the full line of FORCE4® concrete cutting chains, meaning you can use the power cutter on masonry, stone, and even reinforced concrete - perfect for pipe taps, utility vaults, bridge work, and other utility applications.



Diamond Chains

Diamond Chain Technology

The ICS Utility power cutter addresses operator safety with its revolutionary grinding technology which virtually eliminates rotational kickback and improves operator positioning when cutting pipe. Utilized by public and private water and wastewater departments worldwide, this patented platform, exclusively from ICS, is designed to cut a variety of materials from ductile iron to plastic pipe with far less excavation. The ability to cut up to 60 cm pipe completely from one side radically reduces the difficulty of the job. Complete your next job safer, faster and easier with ICS Utility power cutters.

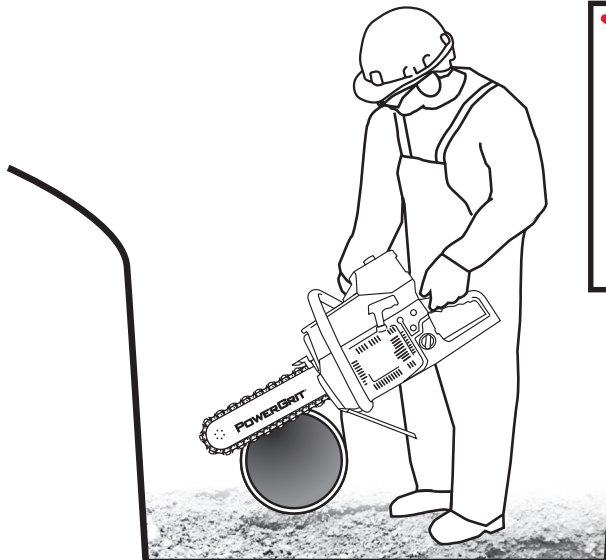


PowerGrit
PIPE CUTTING CHAIN

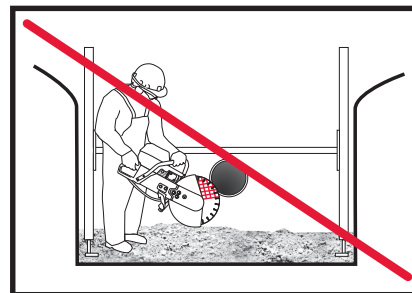
PowerGrit **XL**
PIPE CUTTING CHAIN

PowerGrit chain utilizes our standard diamond coating formulation and patented chain design to deliver the best balance of cutting speed and diamond life across a wide variety of pipe materials. Based on a decade of development and refinement, PowerGrit chain sets the safety and performance benchmark for cutting ductile iron, cast iron and other common pipe materials in the trench.

Incorporating the same safety and jobsite benefits as conventional PowerGrit chain, the new PowerGrit XL chain expands the ICS Utility power cutter offering with an enhanced diamond coating formulation. The larger diamonds and more aggressive grinding action equate to improved cutting performance in ductile and cast iron pipe with drastically faster cutting speed in plastic pipe applications such as high density polyethylene (HDPE) materials.



PowerGrit method



Conventional method

Hydraulic Hoses

Quick disconnect, 25' long, 3000psi.



PART NUMBER	DESCRIPTION
70466	25' hoses

ICS® 2-Stroke Oil

Intensive laboratory and field testing have resulted in an oil formula that is cleaner burning, provides better thermal protection and an improved film barrier reducing piston ring wear. Protect your investment with work-proven ICS® 2-stroke Engine Oil.



50:1 Mix

PART NUMBER	DESCRIPTION
571227	2.6 oz (77 ml) 6-pack
571228	2.6 oz (77 ml) 24-pack

Portable Hydraulic Powerpack

ICS® gas powered powerpacks are a dependable, self-contained source of hydraulic power that offer superior cooling capacity. The functional, ergonomic design makes them easily transportable to any job site.

P95 18 hp (13.5 kW) Powerpack

Adjustable for 5 gpm or 8 gpm (20 lpm or 30 lpm) operation.

PART NUMBER	DESCRIPTION
599653	P95 18 hp (13.5 kW) Powerpack



M300-23G-HPP

12gpm (30 lpm) operation

PART NUMBER	DESCRIPTION
M300-23G-HPP	23 hp Powerpack

890F4/701-A Pipe Clamp

In addition to the time saving value of PowerGrit® technology, the pipe clamp accessory developed for the underground pipe application brings a whole new level of safety, accuracy and ease of use to the job. With a simple adaptor, you can mount to this clamp and dramatically reduce the effort of handling the power cutter, while providing a solid, stable cutting platform that also improves operator safety and the precision of the cut. Fits pipes up to 12" (outside diameter).

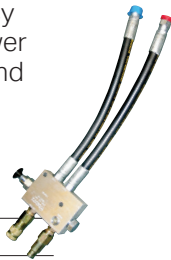
PART NUMBER	DESCRIPTION
537640	Pipe Clamp
537634	Axle replacement



FOR 890F4/701-A ONLY

Flow Adapter Valve

Enjoy the convenience and efficiency of powering your ICS® hydraulic power cutter from skid steers, backhoes, and other common construction equipment. Available for both 8 gpm and 12 gpm (30 lpm and 45 lpm) power cutters.



PART NUMBER	DESCRIPTION
70350	8 gpm Flow adapter valve
71287	12 gpm Flow adapter valve

Portable Water Supply

When water isn't readily available, this corrosion resistant water supply system, with poly tank provides the solution. Able to hold up to 25 gallons, this system offers the pressure and flow that ICS power cutters require. The High-Flo pump provides 1.8 gpm at 60 psi and comes with alligator clips for 12v battery hookup. Comes with a whip fitted with a standard hose end, ready for any regular hose.



PART NUMBER	DESCRIPTION
573285	Portable Water Supply



Diamond Tools and Equipment



**ICS, Blount Inc.
4909 SE International Way
Portland, OR 97222
800.321.1240**

ICSDIAMONDTOOLS.COM