

Boogie Board™

SYNC 9.7

**VIRTUAL DESKTOP COMPANION SOFTWARE
FOR WINDOWS**

USER MANUAL

ABOUT THIS MANUAL

Thank you for getting the Boogie Board™ Sync 9.7 LCD eWriter. This manual will help you with the Sync Virtual Desktop Companion (VDC) software for Windows. Improv Electronics welcomes your feedback on the Boogie Board Sync eWriter, our VDC software, and on this user manual. Please send comments, questions and suggestions to:

improv.support@kentdisplays.com

For support, software downloads, and to register your Boogie Board Sync eWriter, go to:

<http://improvelectronics.com/support>

The Boogie Board Sync eWriter and VDC software continues to improve. Therefore, some changes and features may not be covered in this manual.

REV	REVISIONS	DCN	DATE	REVIEW	BY
A	Initial Release	3648	2014-01-13	TP, DM	JCC

TABLE OF CONTENTS

ABOUT VIRTUAL DESKTOP COMPANION FOR WINDOWS

- 5 Welcome
- 5 System Requirements
- 5 Register with Us
- 6 Software End User License

SETTING UP

- 8 Download and Install
- 8 Connect to Your Boogie Board Sync eWriter
 - 8 Connecting via USB cable
 - 9 Connecting via Bluetooth
- 11 Setting Preferences
 - 11 General Tab
 - 13 Drawings Tab
 - 14 Evernote Tab
 - 15 Email Tab
- 15 Uninstall

VIRTUAL DESKTOP COMPANION FEATURES

- 17 VDC Main Window
- 18 Live Drawing
- 22 Evernote
- 23 Email
- 24 Digitizer Mode

SUPPORT

- 26 Troubleshooting / FAQs

APPENDIX

- 28 Terminology
- 29 Attributions

ABOUT VIRTUAL DESKTOP COMPANION FOR WINDOWS

WELCOME

Welcome to the Virtual Desktop Companion (VDC) software for your Boogie Board Sync 9.7 eWriter (Model WT13106), the latest evolution in eWriter technology. Now you can digitally create page after page of notes and drawings without sacrificing the writing experience. With your VDC for Windows, you can use the Boogie Board Sync eWriter to create and save your images as well as transfer the information wirelessly through Bluetooth to your Windows computer (or, if you wish, through your computer's USB port). And that's just the beginning.

This user manual is current for Windows VDC version 0.9.

SYSTEM REQUIREMENTS

The Sync VDC for Windows is compatible with Windows Vista, 7, and 8.

System Requirements:

- Minimum 50MB available hard disk space
- Minimum 128MB RAM
- Available USB port or Bluetooth compatibility

REGISTER WITH US

Please take a moment to visit our Product Registration website to register the warranty for your Boogie Board Sync eWriter: <http://improvelectronics.com/support/boogie-board-product-registration.html>

SOFTWARE END USER LICENSE AGREEMENT

IMPORTANT: READ BEFORE USING THIS PRODUCT

YOU SHOULD CAREFULLY READ THE FOLLOWING TERMS AND CONDITIONS BEFORE USING THIS PRODUCT. IT CONTAINS SOFTWARE, THE USE OF WHICH IS LICENSED BY KENT DISPLAYS, INC. TO ITS CUSTOMERS FOR THEIR USE ONLY AS SET FORTH BELOW. IF YOU DO NOT AGREE TO THE TERMS AND CONDITIONS OF THIS AGREEMENT, DO NOT USE THE SOFTWARE. USING ANY PART OF THE SOFTWARE INDICATES THAT YOU ACCEPT THESE TERMS.

LICENSE

KENT DISPLAYS, INC. grants you a nonexclusive license to use the accompanying software program(s) (the "Software") subject to the terms and restrictions set forth in this License Agreement. You are not permitted to lease, rent, distribute or sublicense the Software or to use the Software in a time-sharing arrangement or in any other unauthorized manner. Further, no license is granted to you in the human readable code of the Software (source code). Except as provided below, this License Agreement does not grant you any rights to patents, copyrights, trade secrets, trademarks, or any other rights in respect to the Software.

The Software is licensed to be used on any workstation or any network server owned by or leased to you, provided that the Software is used only in connection with a KENT DISPLAYS, INC. display. You may reproduce and provide one (1) copy of the Software and supporting documentation for each such workstation or network server on which the Software is used as permitted hereunder. Otherwise, the Software and supporting documentation may be copied only as essential for backup or archive purposes in support of your use of the Software as permitted hereunder. You must reproduce and include all copyright notices and any other proprietary rights notices appearing on the Software and the supporting documentation on any copies that you make.

NO ASSIGNMENT; NO REVERSE ENGINEERING

You may not transfer or assign the Software and/or this License Agreement to another party without the prior written consent of KENT DISPLAYS, INC. If such consent is given and you transfer or assign the Software and/or this License Agreement, then you must at the same time either transfer any copies of the Software as well as the supporting documentation to the same party or destroy any such materials not transferred. Except as set forth above, you may not transfer or assign the Software or your rights under this License Agreement.

Modification, reverse engineering, reverse compiling, or disassembly of the Software is expressly prohibited. However, if you are a European Community ("EC") resident, information necessary to achieve interoperability of the Software with other programs within the meaning of the EC Directive on the Legal Protection of Computer Programs is available to you from KENT DISPLAYS, INC. upon written request.

EXPORT RESTRICTIONS

You agree that you will not export or re-export the Software or accompanying documentation (or any copies thereof) or any products utilizing the Software or such documentation in violation of any applicable laws or regulations of the United States and the country in which you obtained them."

SETTING UP

DOWNLOAD AND INSTALL

To download and install the VDC software:

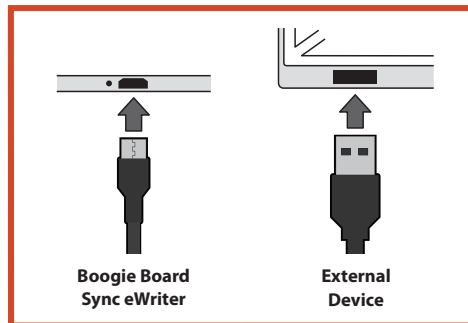
1. Go to **<http://www.improvelectronics.com/support/downloads/>**
2. Under the section for “Boogie Board Sync 9.7 Virtual Desktop Companion Software”, select “Download for PC” on the right hand side. Your download should begin automatically.
 - NOTE: There are currently two options for downloading the VDC for Windows, one for English language and one for Japanese language.
3. Unzip the downloaded file and double-click the Sync application to run the Sync VDC Setup Wizard.
4. To confirm that your download was successful, connect your Boogie Board Sync eWriter with the provided USB cable to your computer. The VDC main screen window will appear.



CONNECT TO YOUR BOOGIE BOARD SYNC EWRIER

Connecting via USB cable

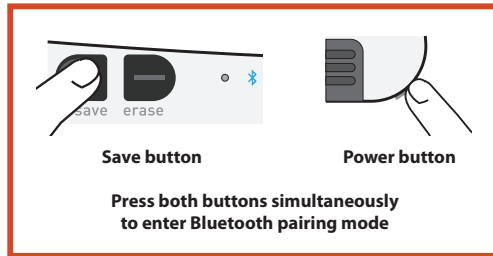
1. Connect the micro end of the provided USB cable to the micro USB port on the bottom of your Boogie Board Sync eWriter.
2. Connect the USB A (larger) end of the micro USB cable into an available USB port on your computer.



Connecting via Bluetooth

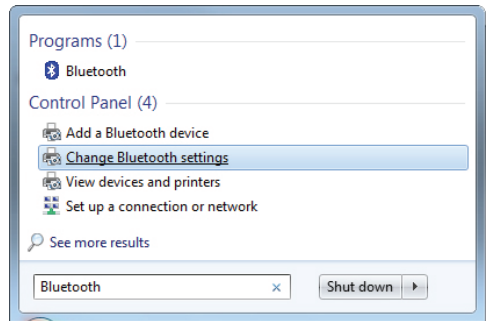
If your computer does not have Bluetooth built in, you can purchase a Bluetooth dongle that will fit into your computer's USB port. Follow the manufacturer's instructions to properly install your Bluetooth dongle.

1. First, you will need to put your Boogie Board Sync eWriter in Bluetooth pairing mode. Make sure your Boogie Board Sync eWriter is turned off. While the Boogie Board Sync eWriter is off, first press the **SAVE** button and then simultaneously press the **POWER** button. This causes the Boogie Board Sync eWriter to enter pairing mode and become discoverable.

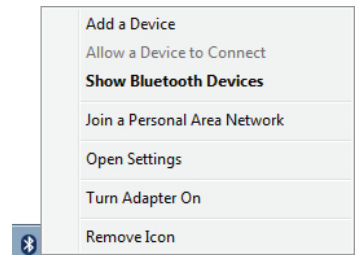


The Bluetooth indicator located on the front of your Boogie Board Sync eWriter will be a solid **BLUE** while it is in pairing mode.

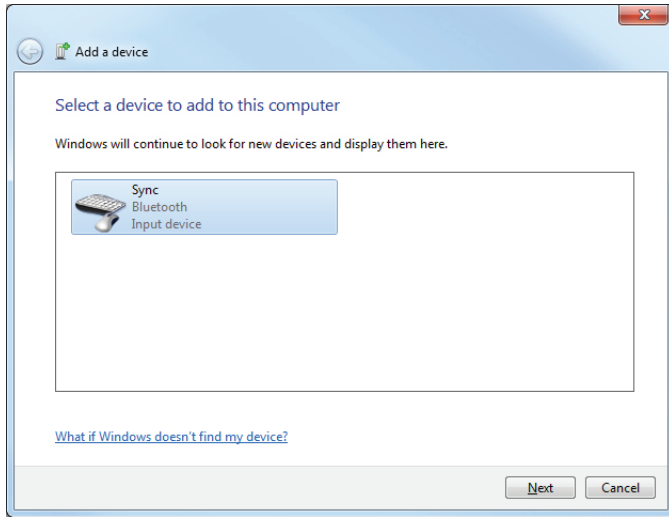
2. If Bluetooth icon is visible on the system tray, skip to step 3.
If Bluetooth icon is not visible on the system tray:
 - a. In the Start menu, type "Bluetooth" in the search box
 - b. Click on "Change Bluetooth settings"
 - c. Check the box for "Show the Bluetooth icon in the notification area" and select "Apply." The Bluetooth icon will now be visible on the system tray.



3. To connect your computer to a new Bluetooth device:
 - a. Right-click the Bluetooth icon on the system tray
 - b. If Bluetooth is not on, select "Turn Adapter On"
 - c. Select "Add a Device"



4. In the “Add a device” window, “Sync” should appear in the list. Select “Sync” and select Next. If “Sync” does not show up in the list, repeat step 1.

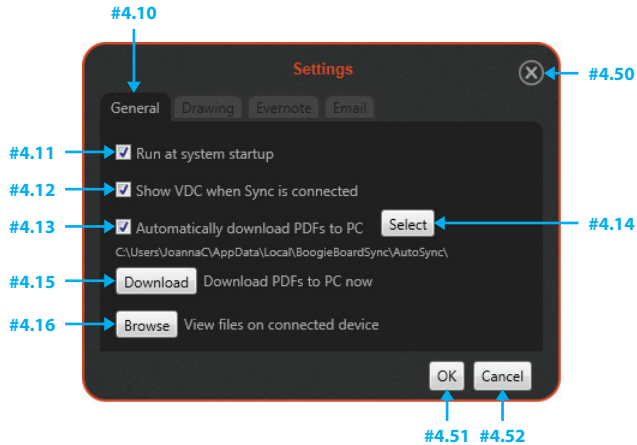


5. Follow the steps to connect and install the device driver software. The Bluetooth indicator located on the front of your Boogie Board Sync eWriter will flash **BLUE** three times when it is paired and connected with your computer.
- If drivers fail to load, if you are using a Bluetooth dongle, try removing and plugging the dongle back in.

SETTING PREFERENCES

To review and update your VDC preferences, select the gear icon in the upper left corner of the VDC main window.

General Tab (#4.10)



Option #4.11: Run at system startup

Toggle VDC to run at system startup. Deselecting this option allows you to not have the VDC run when you log on. The default setting causes the VDC to run when you log on.

Option #4.12: Show VDC when Sync is connected

Toggle auto-display VDC when the Boogie Board Sync eWriter is connected. Deselecting this option allows you to not have the VDC main window appear when your computer is connected to the Boogie Board Sync eWriter. The default setting causes the VDC main window to appear when your computer is connected to the Boogie Board Sync eWriter.

Option #4.13: Automatically synchronize PDFs to PC

Toggle auto-copy PDFs from the Boogie Board Sync eWriter to a Save folder on your computer. Deselecting this option disables automatic retrieval of new files created and saved on your Boogie Board Sync eWriter. These files are created when the Boogie Board Sync eWriter is powered on, recording, and the "Save" button is pressed. The default causes automatic retrieval of these new files.

- If connected via Bluetooth, automatic transfer occurs immediately upon establishing a Bluetooth connection between the Boogie Board Sync eWriter and your computer, and also as new files are saved.
- If connected via USB cable, automatic transfer occurs within a few seconds of connecting the Boogie Board Sync eWriter to your computer.

Button #4.14: Select

The Select button allows you to choose the location of the Save folder on your computer. This is the location on your computer where you want to store and upload the images you create on your Boogie Board Sync eWriter.

- NOTE: If you have not uploaded images from your Boogie Board Sync eWriter to your computer, the Save folder on your computer will be empty. If you have created and saved images on your Boogie Board Sync eWriter, you need to connect your Boogie Board Sync eWriter to your computer to upload the images. Once the Boogie Board Sync eWriter is connected by USB cable or Bluetooth to the computer, you can upload the files and see the files you saved appear in the “Saved” directory on your computer.

Button #4.15: Download

Download all new PDFs saved on the Boogie Board Sync eWriter to the Saved folder on your computer.

Button #4.16: Browse

Browse to the Files folder on the Boogie Board Sync eWriter. To see files you have saved on your Boogie Board Sync eWriter by pressing the “Save” button, go to the “Saved” folder. To see files that you erased by pressing the “Erase” button or by turning off your Boogie Board Sync eWriter, go to the “Erased” folder.

- If connected via USB cable, Browse opens the internal memory location on your Boogie Board Sync eWriter.
- If connected via Bluetooth, Browse opens the VDC window that allows you to browse through files stored on your Boogie Board Sync eWriter and also download and delete files.

Button #4.50: Close

Cancels changes and closes window. The “Close” button appears on each Settings tab.

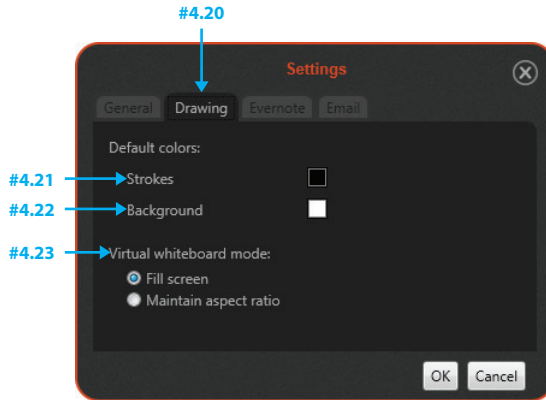
Button #4.51: OK

Applies changes and closes window. The “OK” button appears on each Settings tab.

Button #4.52: Cancel

Cancels changes and closes window. The “Cancel” button appears on each Settings tab.

Drawings Tab (#4.20)



Option #4.21: Strokes color

Set default stroke color. This option allows you to choose the default stroke color to appear on your computer when you use the Live Drawing feature (see page 18 to learn more about Live Drawing). The default stroke color is “Black”.

- NOTE: This does not affect the color of the strokes drawn on the actual Boogie Board Sync eWriter’s drawing surface.

Option #4.22: Background color

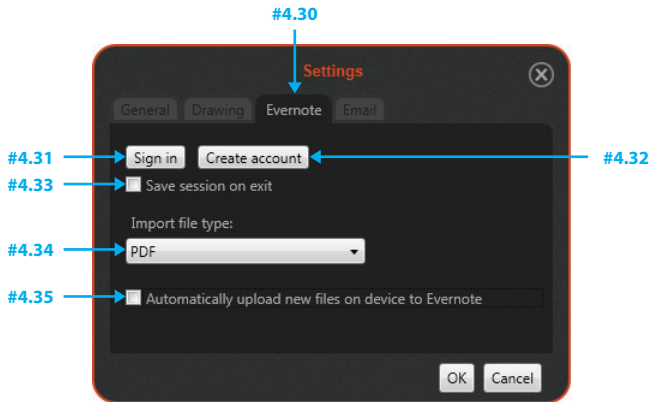
Set default background color. This option allows you to choose the default background color to appear on your computer when you use the Live Drawing feature. The default background color is “White”.

- NOTE: This does not affect the background color of the actual Boogie Board Sync eWriter’s drawing surface.

Option #4.23: Virtual Whiteboard Mode

Changes from stretch/aspect ratio mode for full screen. This option allows you to either maintain aspect ratio of the image you create (default) or fill the screen when you are in Virtual Whiteboard Mode when you use the Live Drawing feature.

Evernote Tab (#4.30)



Button #4.31: Sign in to Evernote

Opens Evernote login (or log out, if currently logged in). This option allows you to connect to an existing Evernote account, or set up a new Evernote account. You can sign up for a free Evernote account here: <http://evernote.com/>

Button #4.32: Create new Evernote account

Opens Evernote account creation page.

Option #4.33: Save session on exit

Remembers Evernote login session. Enabling this option lets the VDC automatically log you into your Evernote account the next time you start the VDC after exiting.

Drop-down #4.34: Import file type

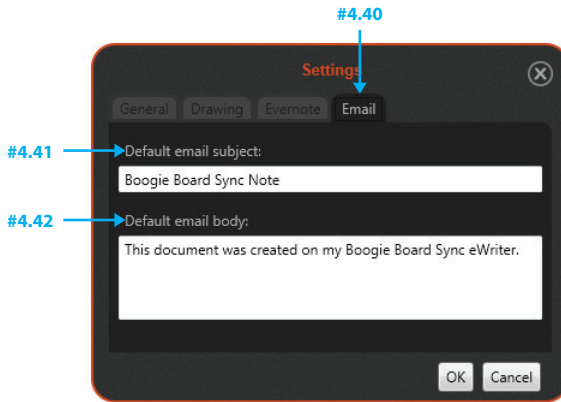
Changes default file type for Evernote uploads. This option allows you to choose file format for uploading files to your Evernote account. The default option is the PDF file format.

Option #4.35: Automatically upload new files on device to Evernote

Toggle automatic uploading to Evernote. This option allows you to automatically upload files to your Evernote account that you have created and saved EITHER by pressing the "Save" button on the Boogie Board Sync eWriter OR by selecting the "Save" button in Live Drawing mode. The default option is to NOT automatically upload these files to your Evernote account, but you can always choose to upload specific files to your Evernote account at any time.

Email Tab (#4.40)

This connects to your default email client on your computer to allow you to send saved notes through email.



Text-box #4.41: Default Subject

Changes default email subject. This option allows you to set the default subject line for your email when you send Boogie Board Sync eWriter files via email. The default subject line is: "Boogie Board Sync Note."

Text-box #4.42: Default Message

Changes default email body. This option allows you to set the default message for your email when you send Boogie Board Sync eWriter files via email. The default email message text is: "This document was created on my Boogie Board Sync eWriter."

- NOTE: Image files created by the Boogie Board Sync eWriter appear as PDF attachments to your email messages when you choose to send via email.

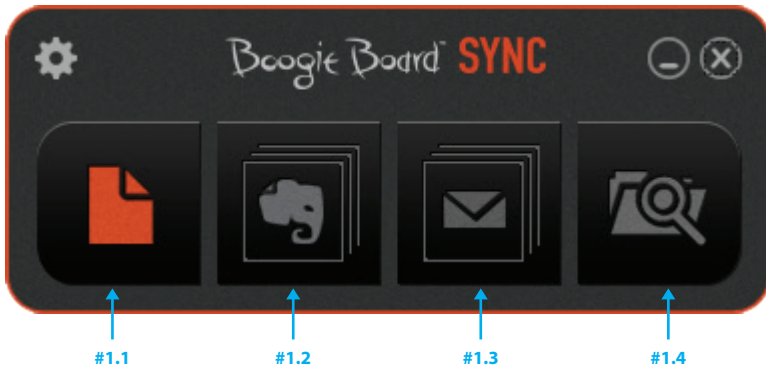
UNINSTALL

To uninstall the VDC software:

1. Close and exit the VDC software
2. Go to the Control Panel and select "Programs and Features"
3. Select "Sync VDC" from the programs list and select "Uninstall"

VIRTUAL DESKTOP COMPANION FEATURES

VDC MAIN WINDOW



Button #1.1: Live Drawing

Opens Live Draw window. This option allows you to draw on your Boogie Board Sync eWriter with the Sync Stylus and have your drawing appear in real time on your computer.

Button #1.2: Evernote

Opens Evernote login. If login information is saved, this opens a file browser for uploading. This option allows you to open up the "Saved" directory on your computer where you can select files to upload to your Evernote account.

- NOTE: This does NOT access the Saved directory on your Boogie Board Sync eWriter
- If your computer is not connected to the Internet, this button is "grayed out" and will not function until an internet connection is established

Button #1.3: Email

Opens file browser to attach file(s) to email message. This option allows you to open up the "Saved" directory on your computer where you can select files to upload to email from your default email client on your computer.

- NOTE: This does NOT access the Saved directory on your Boogie Board Sync eWriter
- If your computer is not connected to the Internet, this button still functions and the email will be saved in your email "Draft" folder to be sent once internet connection is established
- If you select multiple files to send, they will be attached to a single email. Click on the email button again to open a new email.

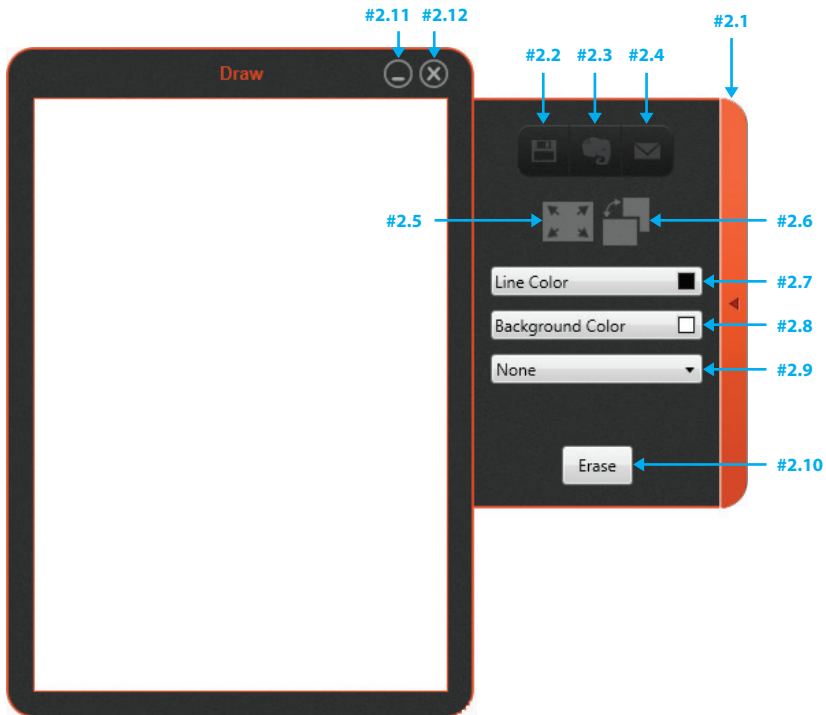
Button #1.4: Browse

Opens Finder to the default "Saved" directory on your computer. For more information about setting Browse preferences, see page 12.

LIVE DRAWING

The VDC software allows you to create images in real-time on your Boogie Board Sync eWriter and your computer, giving you the opportunity to change how your image appears (such as stroke colors, background colors and templates) on your computer.

- NOTE: ONLY USE your Sync Stylus on your Boogie Board Sync eWriter – DO NOT use any other stylus or object to write or draw on your Boogie Board Sync eWriter.



Button #2.1: Side panel toggle

Opens and closes side panel containing Live Draw options.

Button #2.2: Save

Opens save dialog. This option allows you to save what you have written as it appears on your computer. This will save the image to your computer's Save directory.

- NOTE: This DOES NOT save the image to the directory on your Boogie Board Sync eWriter. To save the image on your Boogie Board Sync eWriter to the device itself when connected via Bluetooth, press the "Save" button on your Boogie Board Sync eWriter. It is not possible to save the image on your Boogie Board Sync eWriter to the device itself when connected via USB.

Button #2.3: Evernote

Opens Evernote upload window. This option allows you to upload the drawing on your screen to your Evernote account.

Button #2.4: Email

Opens email client with PDF attached. This option allows you to attach the drawing on the screen to a new email message as an attachment.

Button #2.5: Full screen mode

Displays Live Draw in full screen mode. This option allows you to expand your image to full screen.

- NOTE: The image will appear in aspect ratio or full screen based on how your preference is set (see page 13).

Button #2.6: Portrait / Landscape view

Switches between portrait and landscape view. This option allows you to change the image's orientation from portrait to landscape. To use your Boogie Board Sync eWriter in landscape mode, rotate your Boogie Board Sync eWriter so that the Sync Stylus dock is on the bottom and the printed "Boogie Board" name appears in the lower right hand corner.



- NOTE: Changing between landscape and portrait mode on the computer rotates your image.

Drop-down #2.7: Line color

Changes line color. This option allows you to bring up a box with preset colors as well as to add additional colors.

To add additional colors or change the preset colors in your pallet:

1. Double click a color box to display the "Color panel" window where you can select specific colors to your preference
 2. Once selected, the box changes color
- NOTE: Line color ONLY changes the image in the Live Drawing window – the line drawn on your Boogie Board Sync eWriter's surface will always appear the same color.



Drop-down #2.8: Background color

Changes background color. This option allows you to bring up a box with preset colors as well as to add additional colors.

To add additional colors or change the preset colors in your pallet:

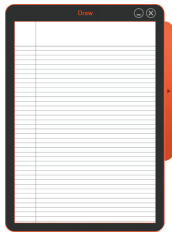
1. Double click a color box to display the "Color panel" window where you can select specific colors to your preference
 2. Once selected, the box changes color
- NOTE: Line color ONLY changes the image in the Live Drawing window – the color of your Boogie Board Sync eWriter's surface will always appear the same color.



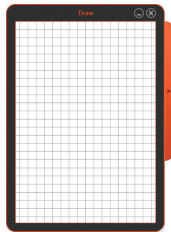
Drop-down #2.9: Template

Changes background template. This option allows you to choose different pre-set templates that will appear as the background on the drawing window on your computer.

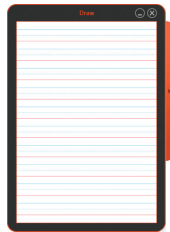
- NOTE: Template ONLY changes the image in the Live Drawing window – the background of your Boogie Board Sync eWriter's surface will always appear the same.
- NOTE: Drawings with background templates that are saved using the VDC will be saved with the template. Pressing the "Save" button on the Boogie Board Sync eWriter DOES NOT save the template behind what you have written or drawn.



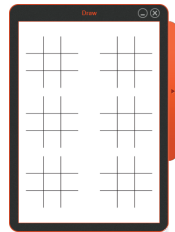
College Ruled



Graph



Penmanship Line



Tic Tac Toe

Button #2.10: Erase

Clears the image in the Live Draw window and on the Boogie Board Sync eWriter's display.

- If the image drawn with the VDC was not saved, pressing the Erase button (#2.10) will place the file (without any template) in the Erased folder in your Boogie Board Sync eWriter's internal memory.
- If you are using a template, the erase button clears what was drawn, but the template will remain in the Live Drawing window.

Button #2.11: Minimize

Minimizes the Live Drawing window to taskbar.

Button #2.12: Close

Closes the Live Drawing window. If there is an image left on the Live Drawing window, the following save dialog will appear.



Button #3.1: Save to Computer

Opens PDF save dialog.

Button #3.2: Upload to Evernote

Opens Evernote note properties.

Button #3.3: Email

Opens default email client with PDF attached.

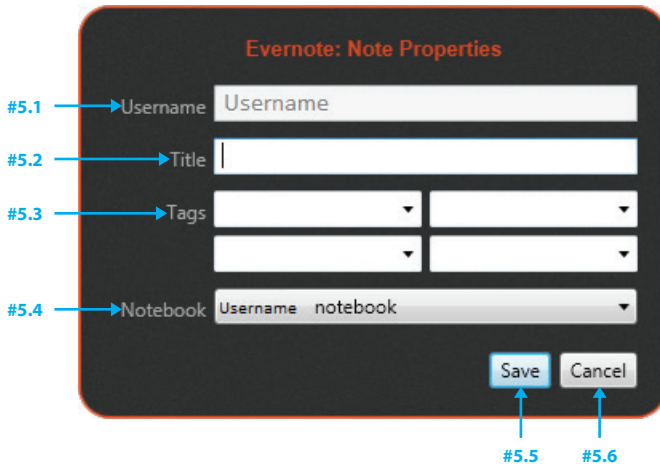
Button #3.4: Close

Cancels save and closes Live Drawing window.

EVERNOTE

The Boogie Board Sync eWriter integrates with Evernote, a cloud-based online tool for note-taking and file organization. You can sign up for a free Evernote account here: <http://evernote.com/>

Click the Evernote button (#1.3) in the VDC main window to access the “Saved” directory on your computer (see page 12). Choose the saved file you would like to upload to Evernote, and click “Open.” The Evernote window will open.



Box #5.1: Username

Shows saved Evernote account name.

Text-box #5.2: Title

Enter text to change the note’s title.

Text-box #5.3: Tags

Enter text to add tags to the note.

Drop-down #5.4: Notebook

Select notebook to upload to.

Button #5.5: Save

Upload to Evernote with current properties.

Button #5.6: Cancel

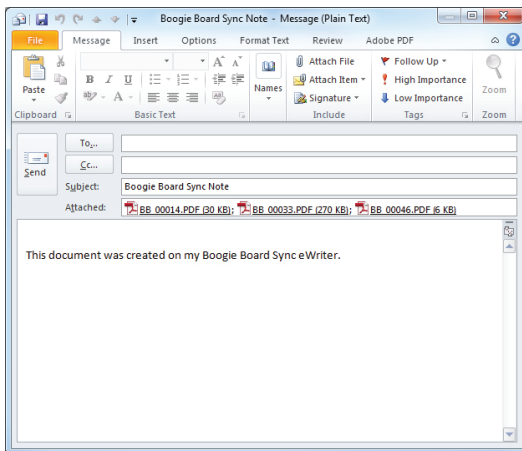
Cancel upload to Evernote.

EMAIL

You can use the VDC to send images created on your Boogie Board Sync eWriter through email.

Click the Email button (# 1.4) in the VDC main window to access the “Saved” directory on your computer (see page 12). Choose the saved file(s) you would like to email, and click “Open.” Your default email client will open with the selected file as an attachment.

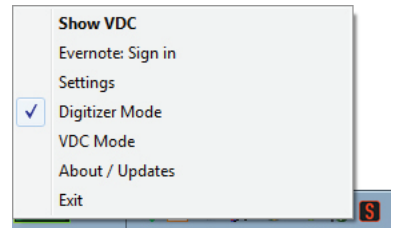
- If your computer is not connected to the Internet, this button will still function. The email will be saved in your email “Draft” folder to be sent once internet connection is established.
- If you select multiple saved files, they will be attached to a single email. Click on the email button again to open a new email.



DIGITIZER MODE

Digitizer mode allows you to use your Sync Stylus to control your cursor as a mouse or input device on your computer.

1. Open the Sync VDC software.
2. Right-click the Sync icon in the system tray and select “Digitizer Mode” to switch to Digitizer mode. Your computer screen will not change.
3. To move the cursor on the computer, move the Sync Stylus close to, but NOT IN CONTACT (i.e., hovering over) with the Boogie Board Sync eWriter drawing surface.
4. To select a button or feature on your computer, touch the stylus to the Boogie Board Sync eWriter drawing surface to create the equivalent of a mouse “left click”.
 - NOTE: The tap can only be on the drawing surface of the Boogie Board Sync eWriter
 - NOTE: You will end up with a bunch of marks on your Boogie Board Sync eWriter surface that you can erase by pressing the Erase button on the Boogie Board Sync eWriter. These “cursor tap” image files will NOT be in the Erased folder on the Boogie Board Sync eWriter.
5. To create the equivalent of a mouse “right click,” press the button on the Sync Stylus. This feature will work both when the Sync Stylus is in contact with the Boogie Board Sync eWriter drawing surface and when the Sync Stylus hovers above the drawing surface.
6. To select multiple items on the computer screen, touch the Sync Stylus to the Boogie Board Sync eWriter drawing surface and drag to the selected items.
7. To exit Digitizer mode, right-click the Sync icon in the system tray and switch to VDC mode or Exit.
 - NOTE: The instant VDC mode is selected, the Sync Stylus will no longer function as a mouse.



SUPPORT

TROUBLESHOOTING / FAQs

ISSUE	SOLUTION
The "Live Draw" feature does not work on my device.	Please verify that the downloaded VDC software is the most current version.
What Windows computers are compatible with my Boogie Board Sync eWriter and the VDC software?	Any computer running Windows Vista, 7, or 8 will be compatible.
How big is the Windows VDC software file?	About 7MB
Is the VDC software open source?	Not at this time.

Still need help?

Visit <http://improvelectronics.com/support> for additional assistance.

APPENDIX

TERMINOLOGY IN THIS MANUAL

TERM	DEFINITION	EXAMPLES
Connected External Device	Any “smart” technology that can physically and/or wirelessly access the Boogie Board Sync eWriter internal memory	The Boogie Board Sync eWriter can connect with: <ul style="list-style-type: none">• Apple products (iPhone, iPad, Mac)• PC desktops/laptops/tablets• Android devices
Sync Stylus	A customized writing tool designed to work with the Boogie Board Sync eWriter	The Sync Stylus enclosed with your Boogie Board Sync eWriter
Bluetooth	A standard for wireless connection of electronic devices	The Boogie Board Sync eWriter is compatible with the Bluetooth 2.1+ EDR (Enhanced Data Rate) standard
Software for Windows	Free software for improved functionality of the Boogie Board Sync eWriter	The Sync VDC software for Windows requires a computer running Windows Vista, 7, or 8.

ATTRIBUTIONS

Boogie Board™ Sync 9.7 LCD eWriter
User Manual
Software for Windows computers
Copyright © Kent Displays, Inc., 2014

All rights reserved. No part of this manual may be reproduced except for your express personal use (without prior written consent of Kent Displays Inc.). Kent Displays Inc. reserves the right to revise this publication without obligation to provide notification of such changes. Kent Displays Inc. strives to provide current, accurate and complete information in this manual. However, Kent Displays Inc. reserves the right to change any specifications, product configurations or other content at our discretion, without prior notice and without obligation to include such changes in this manual.

Boogie Board is a registered trademark of Kent Displays, Inc. in the United States and Japan. Any additional company and product names mentioned in this documentation may be trademarked and/or registered as trademarks. Mention of third-party products is for information purposes only and constitutes neither an endorsement nor a recommendation. Kent Displays Inc. assumes no responsibility with regard to the performance or use of these products.

The Bluetooth® word mark and logos are registered trademarks owned by Bluetooth SIG, Inc. and any use of such marks by Kent Displays, Inc. is under license.

EVERNOTE and the Evernote Elephant logo are trademarks of Evernote Corporation and used under a license.

Windows is a registered trademark of Microsoft Corporation in the United States and other countries.

The Android robot is reproduced or modified from work created and shared by Google and used according to terms described in the Creative Commons 3.0 Attribution License.

Macintosh, iPad, iPhone, and iPod touch are trademarks of Apple Inc., registered in the U.S. and other countries. "Made for iPod," "Made for iPhone," and "Made for iPad" mean that an electronic accessory has been designed to connect specifically to iPod, iPhone, or iPad, respectively, and has been certified by the developer to meet Apple performance standards. Apple is not responsible for the operation of this device or its compliance with safety and regulatory standards. Please note that the use of this accessory with iPod, iPhone, or iPad may affect wireless performance.

"Facebook" is a registered trademark of Facebook, Inc. All rights reserved.

The Twitter name, logo, Twitter T, Tweet, and Twitter blue bird are registered trademarks of Twitter, Inc.