

ASSEMBLY INSTRUCTIONS

How to fit the soft close to an aluminium door

Fittings included:



A x 2



B x 2



C x 2

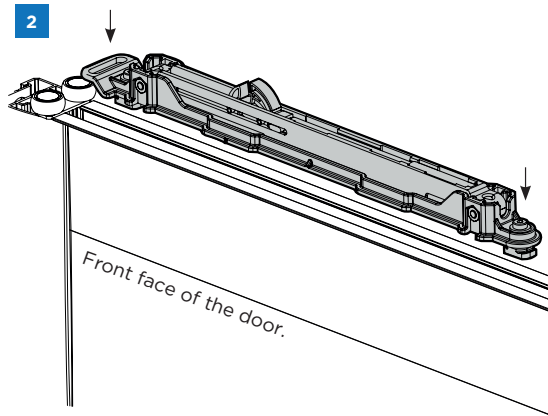
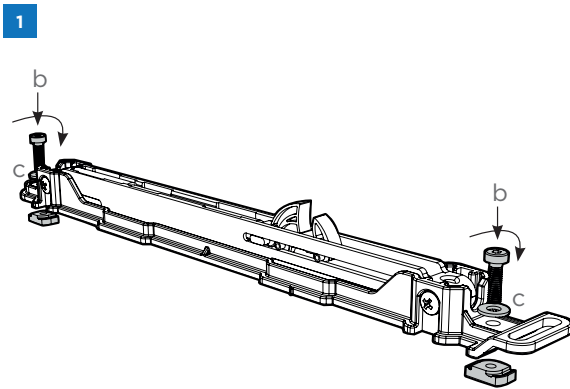
Tools required:



3mm

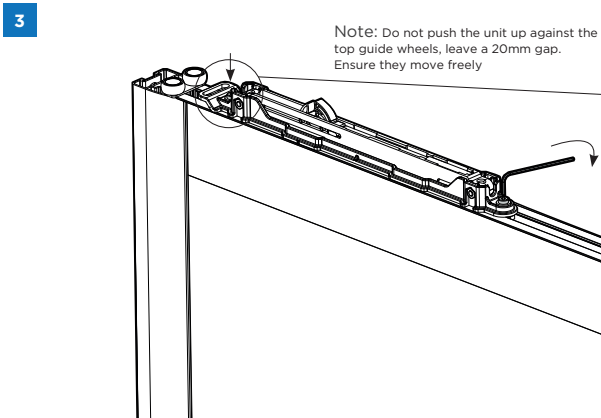


⚠ Please check your opening for any hidden electrical wires and water pipes before screwing

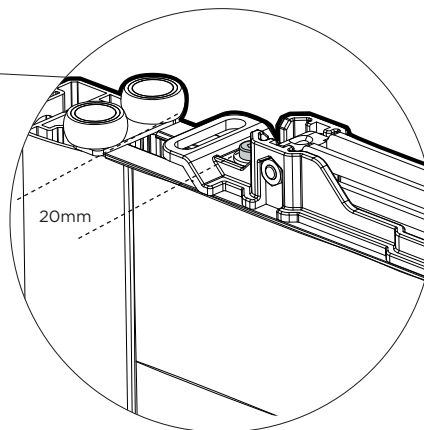


Insert the 2x M4 screws (b) using the washers (c) provided. Screw on the cams but don't tighten all the way yet.

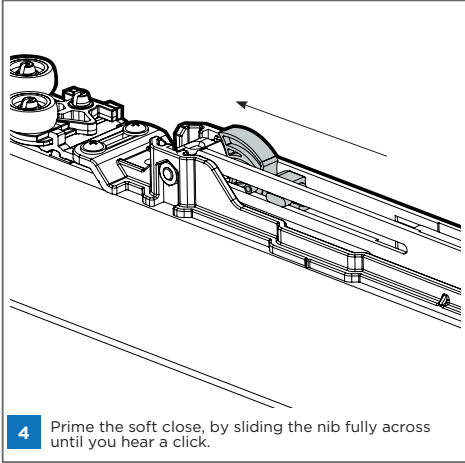
Align and centralise the soft close in the centre of the top rail and slot the cams into the gap in the top rail.



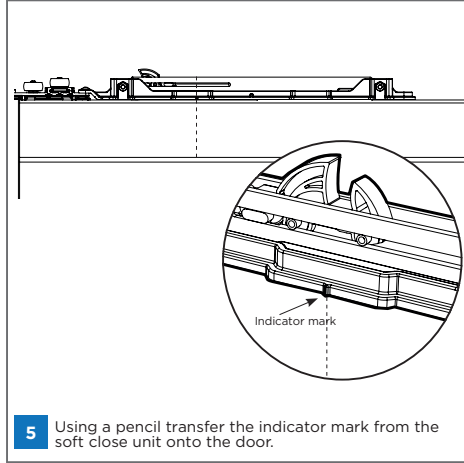
Note: Do not push the unit up against the top guide wheels, leave a 20mm gap. Ensure they move freely



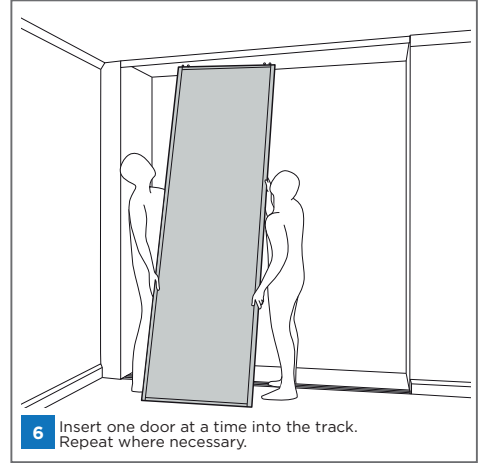
Using an Allen key, tighten both the cams so they lock into place. (Ensure the soft close doesn't slide, but don't over tighten).



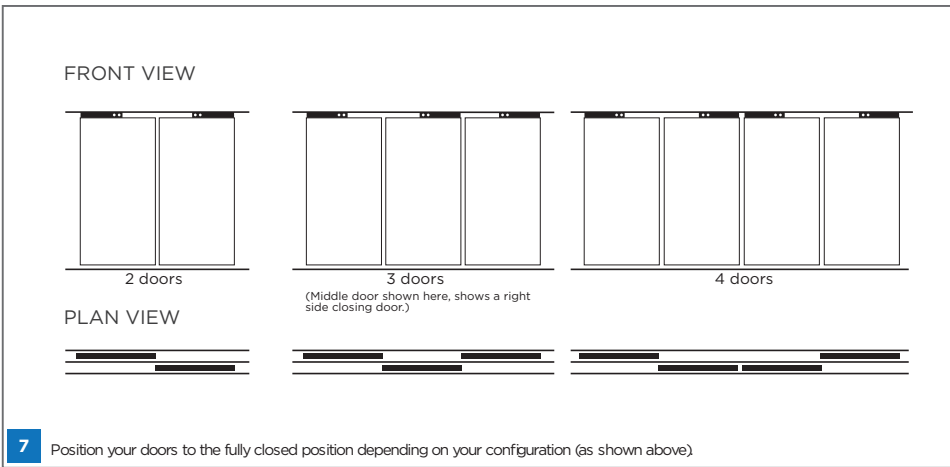
4 Prime the soft close, by sliding the nib fully across until you hear a click.



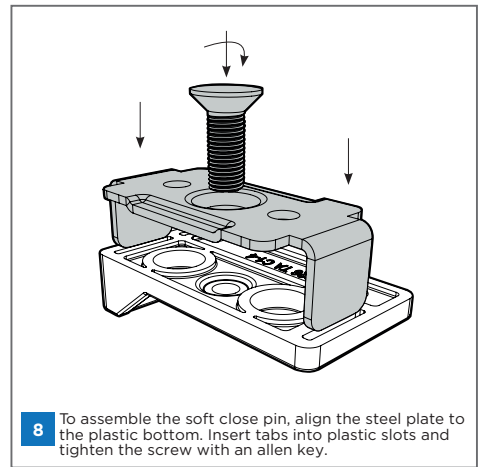
5 Using a pencil transfer the indicator mark from the soft close unit onto the door.



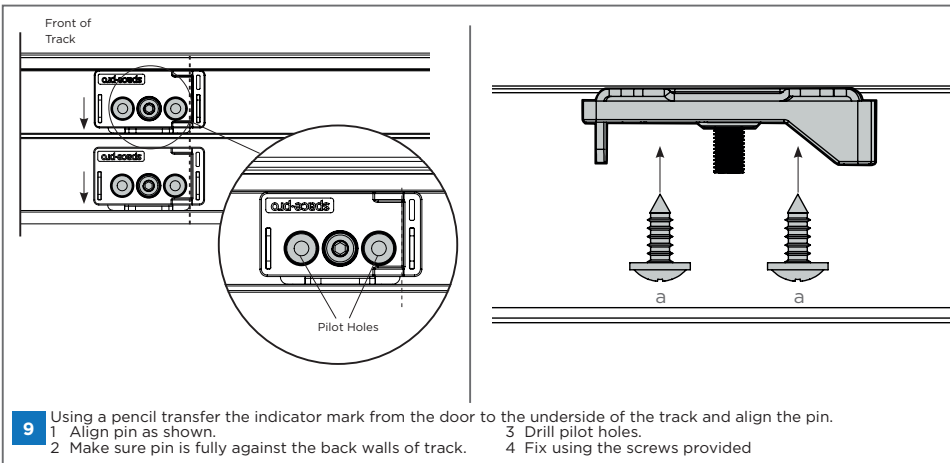
6 Insert one door at a time into the track. Repeat where necessary.



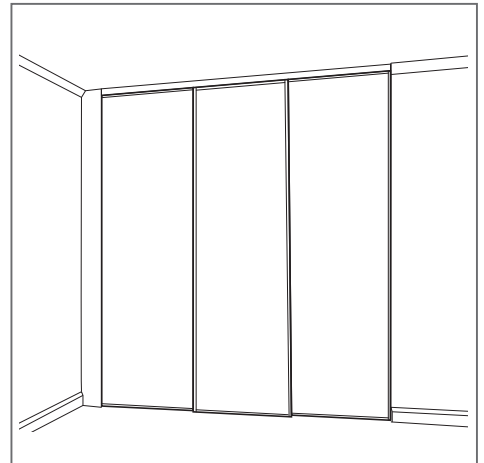
7 Position your doors to the fully closed position depending on your configuration (as shown above)



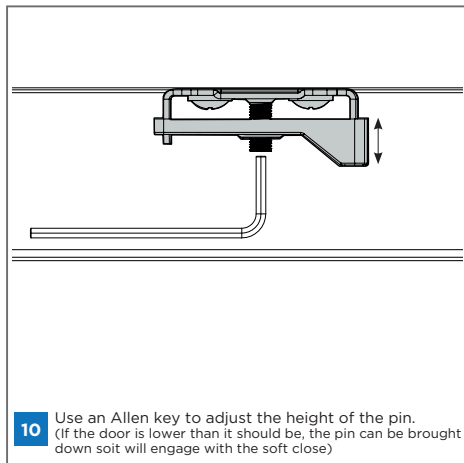
8 To assemble the soft close pin, align the steel plate to the plastic bottom. Insert tabs into plastic slots and tighten the screw with an allen key.



9 Using a pencil transfer the indicator mark from the door to the underside of the track and align the pin.
 1 Align pin as shown.
 2 Make sure pin is fully against the back walls of track.
 3 Drill pilot holes.
 4 Fix using the screws provided



If the soft close doesn't engage first time.



10 Use an Allen key to adjust the height of the pin. (If the door is lower than it should be, the pin can be brought down so it will engage with the soft close)