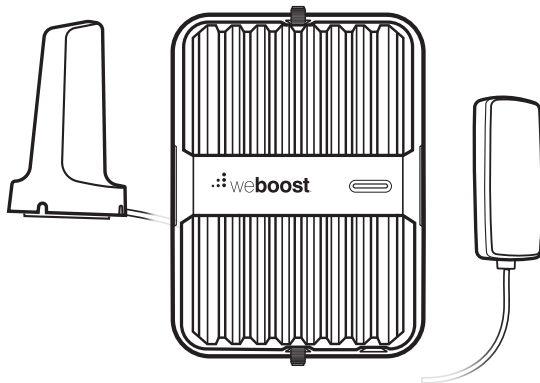




Installation Guide



AM100-Pro
Vehicle Cell Signal
Booster Kit

Index

Package Contents	1
STEP 1 Mount the Outside Antenna	2
STEP 2 Mount the Inside Antenna	4
STEP 3 Connect Outside Antenna to Booster	5
STEP 4 Connect Inside Antenna to Booster	5
STEP 5 Connect Power Supply to Booster	6
Booster Light Patterns	7
Troubleshooting	9
Safety Guidelines	11
Specifications	12
Warranty	13

Package Contents



Booster &
Mounting
Bracket



Outside
Antenna
(311216)



Inside
Antenna
(314401)



Power
Cable
(850029)

STEP 1 Mount the Outside Antenna

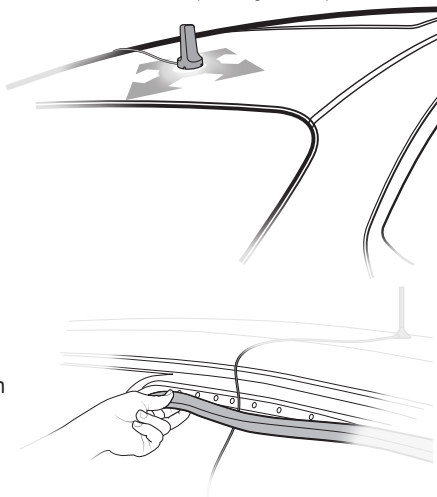
Identify a location on the top of your vehicle that is:

- Near the center of the roof.
- At least 12 inches away from any other antennas.
- At least 12 inches away from any windows (for best performance install on top of vehicle).

Clean the surface where you will place the outside antenna. Mount the outside antenna by placing on top of vehicle.

Note: The cable is strong enough that it may be routed under weather stripping and shut in most vehicle doors.

12 in. away from windows
(including sunroofs)



(STEP 1 cont.)

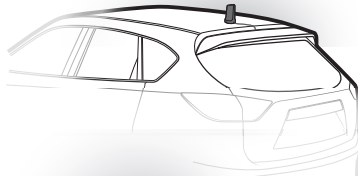
See options on how cable can be routed with different vehicles.

Note: When going through a car wash, remember to remove your antenna.

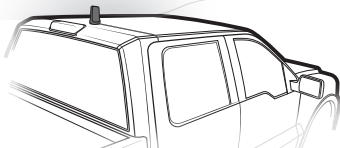
Car/Sedan: Cable routed into rear side door.



SUV/Van/Hatchback: Cable routed into top of hatchback door.

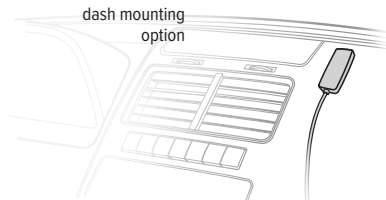
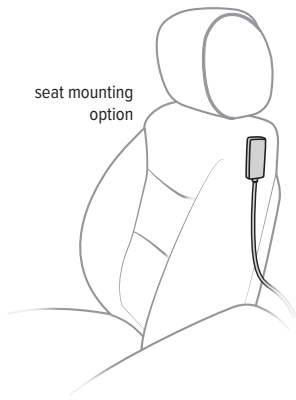
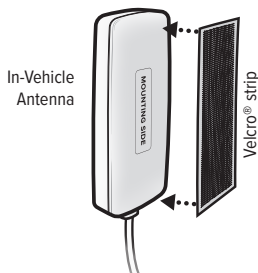


Truck: Cable routed into side door.



STEP 2 Mount the Inside Antenna

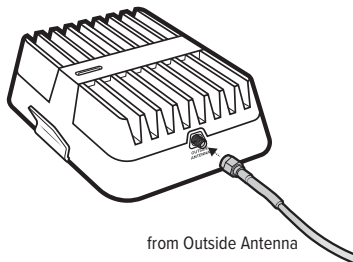
Identify a place to mount the in-vehicle antenna, either on the side of the seat or on the dash and mount. The location should be at least 18 inches but no more than 36 inches from where the cellular device will be used. Use the Velcro® adhesive strip/adhesive strip provided and attach to desired location.



STEP 3 Connect Outside Antenna to Booster

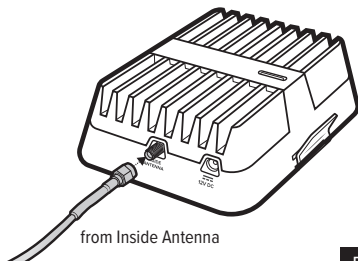
Connect the cable from the outside antenna to the port labeled “Outside Antenna” on the AM100-Pro booster.

Note: The Velcro® strip on the bottom of the booster can also be used to keep booster from sliding around.



STEP 4 Connect Inside Antenna to Booster

Connect the cable from the inside antenna to the port labeled “Inside Antenna” on the booster.

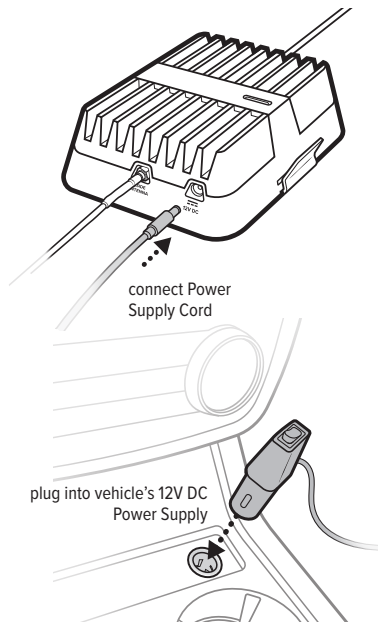


STEP 5 Connect Power Supply to Booster

Connect the 12V power supply cord to the end of the booster, labeled "**12V DC**" then plug the power adapter into vehicle's **12V DC power supply**. Push switch to ON position. If your AM100-Pro is working correctly, the light on the booster will be green. **Use only the power supply provided in this package.**

Note: If the 12V Cigarette Lighter port on your car is always on (even when your vehicle is turned off) and you will be parking for extended periods of time (more than a day), we recommend you turn the booster off by pushing power cord switch to OFF position. This will prevent the AM100-Pro from draining the battery in your vehicle.

Note: When going through car wash, remember to remove your outside antenna.



Booster Light Patterns

SOLID GREEN

This indicates that your AM100-Pro booster is functioning properly and there are no issues with installation.

SOLID RED

Booster has shutdown. This is due to a feedback loop condition called oscillation. This is a built in safety feature that causes a band to shut off to prevent harmful interference with a nearby cell tower. Refer to Troubleshooting section.

BLINKING RED, THEN SOLID GREEN

This indicates that one or more of the Booster bands has reduced power due to a minor feedback loop condition called oscillation. This is a built in safety feature to prevent harmful interference with a nearby cell tower. If you are already experiencing the desired signal boost, then no further adjustments are necessary. If you are not experiencing the desired boost in coverage then refer to the Troubleshooting section.

LIGHT OFF

If the AM100-Pro booster's light is off, verify your power supply has power.

(Booster Light Patterns cont.)

NOTE: The AM100-Pro booster can be reset by disconnecting and reconnecting the power supply.

After troubleshooting you must initiate a new power cycle by disconnecting and then reconnecting power to the booster.

Troubleshooting

FIXING BLINKING OR RED LIGHT ISSUES

This section is only applicable if the Booster is red or blinking red and you are not experiencing the desired signal boost.

- Unplug the booster's power supply.
- Relocate the inside and outside antenna further from each other. The objective is to increase the separation distance between them, so that they will not create this feedback condition discussed before.
- Plug power supply back in and ensure switch is in ON position.
- Monitor the indicator light on your booster. If, after a few seconds of 'power on', a solid or blinking red light appears, repeat prior steps. Increase the separation distance until the condition is corrected and/or desired coverage area is achieved.

If you are having any difficulties while testing or installing your Booster, email our Customer Support team at support@techlineglobal.com.

(Troubleshooting cont.)

FREQUENTLY ASKED QUESTIONS

How can I contact customer support?

Customer Support can be reached at support@techlineglobal.com.

Why do I need to create distance between the Outside Antenna and Inside Antenna?

Antennas connected to a booster create spheres of signal. When these spheres overlap, a condition called oscillation occurs. Oscillation can be thought of as noise, which causes the booster to scale down its power or shut down to prevent damage. The best way to keep these spheres of signal from overlapping is to maximize separation between the inside and outside antennas.



www.weboost.com



support@techlineglobal.com

Safety Guidelines

Use only the power supply provided in this package. Use of a non-weBoost product may damage your equipment.

Connecting this signal booster directly to the cell phone with use of an adapter will damage the cell phone.

RF Safety Warning: Any antenna used with this device must be located at least 8 inches from all persons.

Specifications

AM100-Pro Cell Signal Booster			
Model	520005		
Connectors	SMA		
Antenna Impedance	50 Ohms		
Frequency	1920-1980 MHz, 1710-1785 MHz, 2500-2570 MHz, 880-915 MHz, 2110-2170 MHz, 1805-1880 MHz, 2620-2690 MHz, 925-960 MHz		
Uplink Power	2100 MHz B1 24 dBm	1800 MHz B3 23 dBm	900 MHz B8 25 dBm
Downlink Power	6 dBm	6 dBm	6 dBm
Noise Figure	5 dB		
Isolation	>-90 dB		
Power Requirements	12V 1.8A		

The Signal Booster cannot be adjusted without factory reprogramming or disabling the hardware. The Signal Booster will amplify, but not alter incoming and outgoing signals in order to increase coverage of authorized frequency bands only. If the Signal Booster is not in use for five minutes, it will reduce gain until a signal is detected. If a detected signal is too high in a frequency band, or if the Signal Booster detects an oscillation, the Signal Booster will automatically turn the power off on that band. For a detected oscillation the Signal Booster will automatically resume normal operation after a minimum of 1 minute. After 5 (five) such automatic restarts, any problematic bands are permanently shut off until the Signal Booster has been manually restarted by momentarily removing power from the Signal Booster. Noise power, gain, and linearity are maintained by the Signal Booster's microprocessor.

✔ 2 YEAR WARRANTY

weBoost Signal Boosters are warranted for two (2) years against defects in workmanship and/or materials. Warranty cases may be resolved by returning the product directly to the reseller with a dated proof of purchase.

Signal Boosters may also be returned directly to the manufacturer at the consumer's expense, with a dated proof of purchase and a Returned Material Authorization (RMA) number supplied by weBoost. weBoost shall, at its option, either repair or replace the product.

This warranty does not apply to any Signal Boosters determined by weBoost to have been subjected to misuse, abuse, neglect, or mishandling that alters or damages physical or electronic properties.

Replacement products may include refurbished weBoost products that have been recertified to conform with product specifications.

RMA numbers may be obtained by contacting Customer Support.

DISCLAIMER: The information provided by weBoost is believed to be complete and accurate. However, no responsibility is assumed by weBoost for any business or personal losses arising from its use, or for any infringements of patents or other rights of third parties that may result from its use.



3301 East Deseret Drive, St. George, UT

 www.weboost.com  support@techlineglobal.com

Copyright © 2021 weBoost. All rights reserved. Wilson Electronics products covered by U.S. patent(s) and pending application(s)
For patents go to: weboost.com/us/patents

NOT AFFILIATED WITH WILSON ANTENNA

GDE000495_001_09.08.22