



Passion makes us fly

USER MANUAL

FOR NAVIGATOR CONTROL BAR

WELCOME

Thank you for buying this Peter Lynn product, and welcome to the World of Peter Lynn, a world of wind driven excitement, where people passionately pursue their dreams. Whether that's freeriding flat waters on your twintip or charging rolling sets on your directional. Peter Lynn is here to help you pursue your dream, making you achieve your ultimate challenge. Are you ready?

Peter Lynn has been there taking challenges from the early days of the sport. Challenges to develop breakthrough ideas, make better products, improve performance and quality in all aspects of those products. We have the right kites for all kite disciplines, for any terrain and for all conditions. All this is realized by a passionate crew of kite sports enthusiasts and we invite you to join us. It's that passion that makes us fly.

Before any attempt to use this product, please ensure you pay full and careful attention to the contents of this manual. While traction kiting is an exciting and fun sport, it can be highly dangerous, especially if not all the necessary safety precautions are taken. So please make sure you learn this great sport in a safe way. Only then will you progress quickly and enjoy this beautiful sport to the max.

Enjoy!

SAFETY INSTRUCTIONS

CAUTION: Kite powered sports can be very dangerous and physically demanding. The user of this product should understand that participating in kite powered sports may involve serious injury or death and agrees to observe the safety precautions listed below.

Safe location and weather conditions:

- Stay away from power lines, roads, airfields, railway lines, trees and buildings.
- Never launch your kite in crowded areas. Do not fly your kite over bystanders.
- Make sure there is a 'clear' downwind area at least three times the distance of your flying line length.
- Never fly kites or use this product in thunderstorms, lightning or gusty/stormy winds.
- Never fly a kite or use this product with wind forces so strong that you are unable to maintain full control of your kite and its power at all times.
- Do not fly a kite or use this product when wind conditions are likely to change dramatically.
- Stop kiting immediately when a storm or lightning is approaching.
- Make sure you are familiar with the location and local customs and laws before attempting any kind of kite sports.

Safe traction kiting:

- A traction kite is not a toy and should not be flown by inexperienced persons and certainly not by children.
- Learn to fly kites by starting in light winds with a small sized kite.
- Never use any type of kite or this product for paragliding, parachuting or base jumping.
- Never use any type of kite or this product for jumping off high places like hills or cliffs
- Never use any type of kite or this product for any manlifting activity.
- Always use fully protective gear when kiteboarding, landboarding, snowkiting or buggy riding.

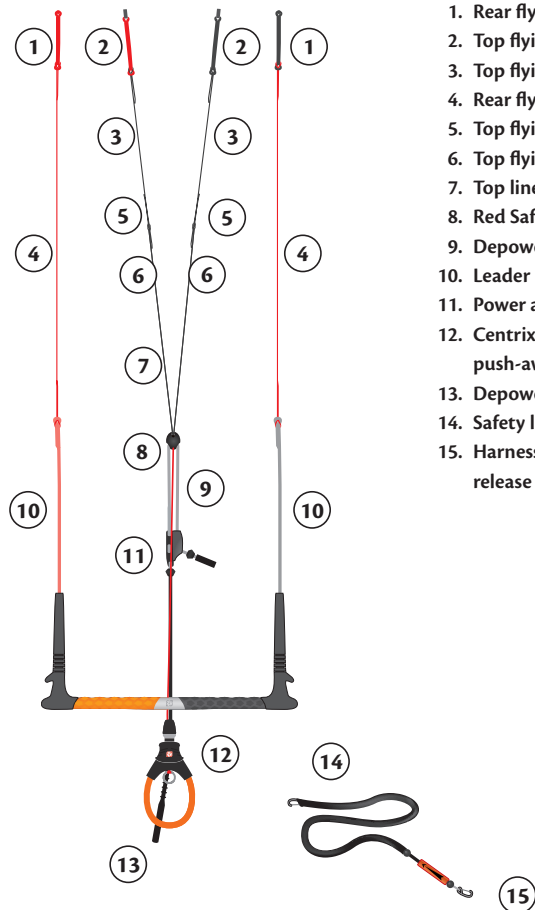
Safe kiteboarding:

- Do not go kiteboarding in offshore winds.
- Be careful when kiting in onshore winds.
- We strongly recommend the use of helmet and life jacket/impact vest. A safety knife to cut flying lines in case of emergency is recommended.
- Do not kiteboard in spots already in use by swimmers or surfers.
- Beware of strong currents and sharks.
- Stay safely away from other watercrafts and shipping lanes.
- Never go further out to sea than you can safely swim back.
- Always make sure there is a capable person on shore that is keeping watch and is ready to provide (or call for) help in case of an emergency.
- We strongly recommend taking lessons from a certified kiteboarding school before using this kite on your own.

Safety issues when using this product:

- This kite has been manufactured with high quality materials and has been manufactured using the latest and most advanced production methods.
- Prior to every use of this product, fully check your equipment for any signs of wear and tear. Replace parts immediately where needed.
- Prior to every use of this product, check if your safety releases are still working properly and you are aware how to use it. In case the safety release does not work as it should, do not use this product and replace parts where needed.
- Only use this product for kiteboarding, buggy riding, landboarding and snowkiting.
- Do not use this product when your body weight is over 130kg (285lbs).
- Only use this product when you are in a good state of health. Never use this product when under the influence of alcohol, drugs or medication.
- Do not alter, modify or change this product. Repairs should be done by a professional kite repair shop, sail repair shop, or by the Peter Lynn company.

TERMINOLOGY NAVIGATOR



Navigator terminology

1. Rear flying line connector
2. Top flying line connector
3. Top flying line, upper segment
4. Rear flying line
5. Top flying line segment connection
6. Top flying line, lower segment
7. Top line connection point
8. Red Safety line
9. Depower/adjuster line
10. Leader line
11. Power adjuster cleat
12. Centrix depower loop with push-away safety release
13. Depower loop lock-in pin
14. Safety leash
15. Harness attachment with quick release



Centrix push-away terminology

16. PU coated depower line
17. Safety line running through depower loop
18. Swivel
19. Centrix push-away main body with safety release cuff
20. Safety leash attachment ring
21. Depower loop tube
22. Depower loop lock-in pin

PRIMARY SAFETY RELEASE

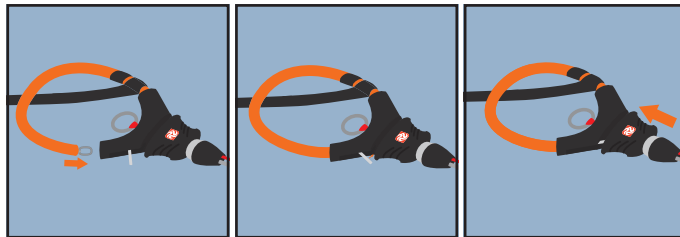
When things get out of hand you might want to use your safety release. The Navigator control bar has a primary release on the depower loop. After activating the release, the kite is only supported by the safety line.

Activating the primary quick release



To activate your primary quick release, push the release cuff part towards the kite.

Re-connecting the primary safety release

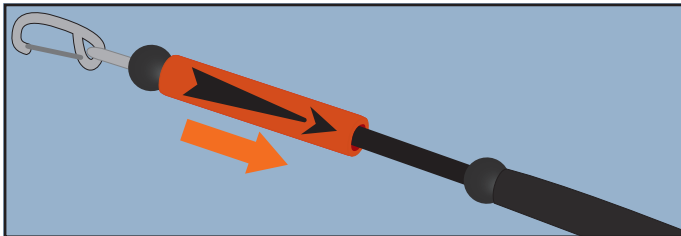


Re-connect the primary safety release by placing stainless steel ring on the end of the depower loop tube into the Centrix push-away center piece and behind the hook on the pin inside the center piece. Then push the pin into the center piece and lock it in place by sliding the release cuff back down. Always make sure all parts are free of sand and/or snow before re-connecting your safety system.

SECONDARY QUICK RELEASE

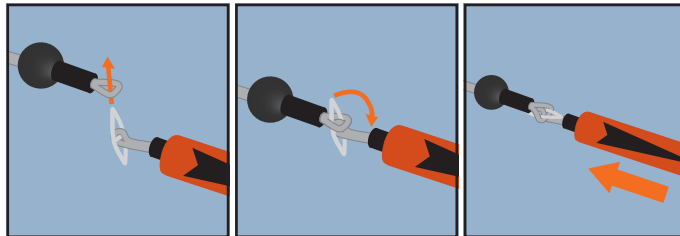
In case you completely want to disconnect yourself from the kite, you can activate the secondary quick release afterwards.

Activating the secondary quick release



To activate your secondary quick release, move the red release in the direction of the arrows.

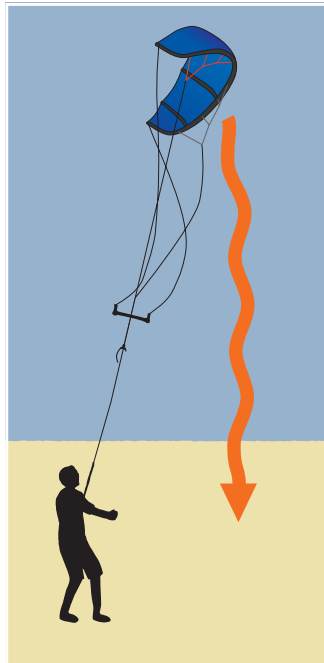
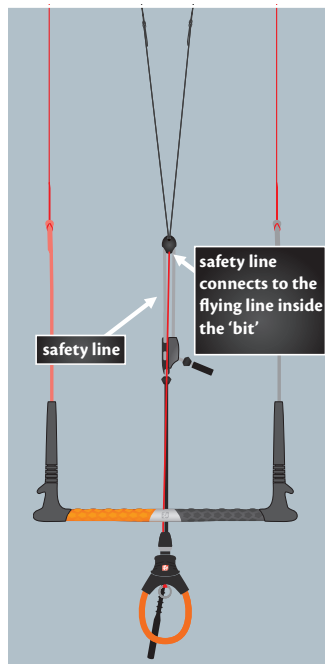
Re-connecting the secondary quick release



Re-connect the secondary safety release by placing the loop over the stainless steel pin, folding the pin down and sliding the release cuff back in place. Make sure the release cuff is sitting right against the ball after reconnecting.

SAFETY SYSTEM NAVIGATOR

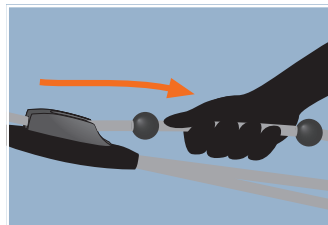
Standard single line flag out



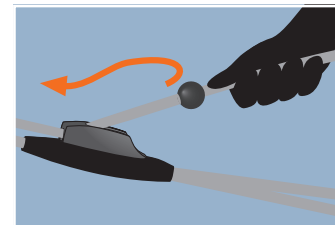
- Kite will lose all of its power.
- Kite will drop from the sky and will lay on its back.
- Kite will have very little power when lying on the water.
- Very fast and easy recovery, bar does not slide very far from rider.

USING THE POWER ADJUSTER

To set the overall power of the kite, you can use the power adjuster.



To reduce the overall power of the kite, pull in the line coming out of the adjuster cleat.



To increase the overall power of the kite, pull the line slightly towards you and move it away from the cleat. Now let the line out and let it lock back into the cleat at the desired position.

MAINTENANCE

Take proper care of your equipment! This will help your bar to last a lot longer.

- Make sure you regularly check your bar for wear and tear. Make sure to check your depower loop, depower loop tube, depower/adjuster line, adjuster, safety line, endcaps, flying lines and sleeves on the flying lines. Replace parts when needed. There should be a large amount of replacement parts available at your local dealer.
- Before launching, always check that your quick releases are in working order.
- When reaching the water, before starting your kiteboarding session, splash some water on your bar to rinse off sand that has stuck to it. Also when using your bar on land, after launching wipe as much sand off your bar as possible. Especially remove sand from the depower loop, depower/adjuster line, center hole in your bar, stopper and adjuster. Also get rid of any sand on the safety line on the section next to the depower line.
- After every session, rinse your bar with tap water to remove the salt from the bar. Make sure your depower loop, depower/adjuster line, stopper and adjuster are free of sand.

WARRANTY

Peter Lynn warrants this product, when it is purchased from an authorized Peter Lynn dealer by a retail customer, to be free of major defects in material or workmanship to the original purchaser, for a period of six (6) months from the date of purchase by the original retail customer. This warranty is subject to the following limitations:

- The warranty is solely for the benefit of the original retail purchaser and may not be assigned. For retail customer warranty claims, proof of purchase from an authorized Peter Lynn dealer is required. If the date of purchase can not be established, Peter Lynn will make a determination based on the last production year and/or the condition of the particular product claimed.
- The warranty on this product is valid only when it is solely used for designated purposes c.q. kiteboarding on water and does not apply to any product used for rental and/or teaching purposes.
- Peter Lynn will make the final warranty determination, which may require inspection and/or photos of the equipment. Photos must clearly show the defect(s). If necessary, this information must be sent to the Peter Lynn dealer where the product was originally purchased, postage prepaid. Alternatively you may contact the Peter Lynn distributor in (or nearest to) your country.
- If a product is deemed to be defective by Peter Lynn, the warranty covers the repair or replacement of the defective product only. Peter Lynn will not be responsible for any costs, losses, or damages incurred as a result of loss of use of this product. This warranty does not cover damage caused by misuse, abuse, neglect or normal wear and tear including, but not limited to, damage due to excessive sun exposure, use in combination with other than Peter Lynn control gear, damage caused by improper handling and storage, damage caused by use in waves or shore break, and damage caused by anything other than defects in material and workmanship.
- The warranty is voided if any unauthorized repair, change or modification has been made to any part of the equipment. The warranty for any repaired or replaced equipment takes effect from the date of the original purchase only. The original purchase receipt must accompany all warranty claims. The name of the Peter Lynn dealer and the date of purchase must be clear and legible.
- There are no warranties which extend beyond the warranty specified herein.

Warranty Claims

Warranty claims must be processed through an authorized Peter Lynn dealer and be issued a return authorization prior to shipping the product concerned. For claims processing please contact the Peter Lynn dealer the product was purchased from or call - or write to - the national Peter Lynn distributor. If there is no Peter Lynn distributor in your country, please find our contact details on our website www.peterlynnkiteboarding.com.

DISCLAIMER – RELEASE OF LIABILITY

Peter Lynn / Vliegerop Ltd - Release of Liability

Caution

Before making any attempt to set up or use this product, you agree to have read and fully understood the entire Peter Lynn Navigator user manual; including, but not limited to, all instructions and warnings it contains. You also agree to make sure that any other user of this Peter Lynn product, prior to using it, will also read and fully understand this Peter Lynn Navigator user manual; including, but not limited to, all instructions and warnings it contains.

Assumption and acceptance of risk

Kite powered sports can be very dangerous and physically demanding. While powerkiting in its many forms is an exciting and fun sport, it can be highly dangerous for yourself and others around you, especially if the necessary safety precautions are not or only partly taken. The user of this Peter Lynn product should understand that participating in kite powered sports can result in serious personal injury – and even death – to the user as well as to third parties. Before setting up and using this Peter Lynn product you agree to assume and accept any risk of injury, whether known or unknown, to both yourself and any third parties from using this Peter Lynn product. To reduce these risks, we strongly recommend you to stick to the safety precautions listed in this Peter Lynn user manual.

Disclaimer and Release of Liability

Concerning the purchase of this Peter Lynn product by you, you hereby agree, to the greatest extent allowed by law, to waive any claims you have or may have in the future against Peter Lynn and all related entities resulting from using this Peter Lynn product and/or any of its components.

You will also release Peter Lynn and all related entities from any liability for special, indirect, incidental, consequential or exemplary damages, whether in contract, tort, negligence, strict liability or otherwise including, but not limited to, loss of property other than this Peter Lynn product, loss of use of this product, or other property or other economic losses. Peter Lynn shall not be liable for contribution or indemnification, whatever the cause.

All terms and conditions contained herein shall, in the event of your death or incapacity, apply and be binding upon your heirs, next of kin and any other representatives including, but not limited to, administrators and executors. The foregoing provisions regarding liability and warranty are exclusive and in lieu of all other liability- and warranty statements, whether written, oral or implied.



Passion makes us fly



Join us on Facebook
[Facebook.com/peterlynncom](https://www.facebook.com/peterlynncom)



Our latest videos
[Youtube.com/peterlynncom](https://www.youtube.com/peterlynncom)



Our latest snapshots
[Instagram.com/peterlynnkiteboarding](https://www.instagram.com/peterlynnkiteboarding)



Visit our website
www.peterlynnkiteboarding.com