



# VANITY INSTALLATION INSTRUCTIONS

---

Should you need assistance please call on 02 97721306  
Service warranty Claims register your claim at [https://  
www.ottiaustralia.com.au/page/5/warranty](https://www.ottiaustralia.com.au/page/5/warranty)

INSTALLATION GUIDE  
FOR ALL CABINETS



CONGRATULATIONS ON THE PURCHASE OF YOUR NEW OTTI AUSTRALIA VANITY. WE HOPE YOU & YOUR FAMILY ENJOY YOUR NEW PRODUCT AND CONSIDER US FOR ANY FUTURE PROJECTS. OTTI PRODUCTS HAVE BEEN MANUFACTURED UNDER THE HIGHEST STANDARDS OF QUALITY AND WORKMANSHIP.

**\*\*Please inspect thoroughly before installation to ensure that the product has not been damaged and is correct. No claims for damage or incorrect items will be recognised after installation.\*\***

## IMPORTANT: PLEASE READ PRIOR TO INSTALLATION

- **Take Care While Transporting and Handling Goods.**
- **This product should be installed by a qualified, licensed Tradesperson.**
- **Please inspect thoroughly before installation to ensure that the product has not been damaged and is correct. No claims for damage or incorrect items will be recognised after installation.**

### START HERE

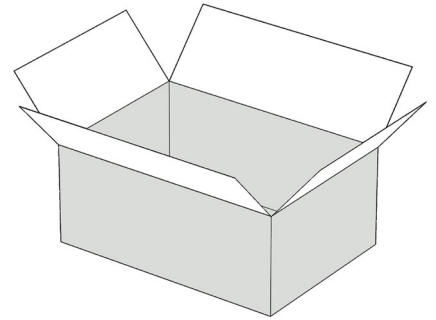
#### 1 CHECK PRODUCTS FOR ANY ISSUES

Prior to opening any packaging, check that the items you have received match the items on your invoice. If goods are incorrect, faulty, damaged or differ to what you should have received

Please DO NOT proceed with installation and contact your retailer immediately.

**Claims for damages and incorrect items delivered will not be processed if the items have been installed or attempted to have been installed.**

Please note: All Ottil vanities must be installed with tiles behind them. Any vanities which have been "tiled in" will be void of warranty.



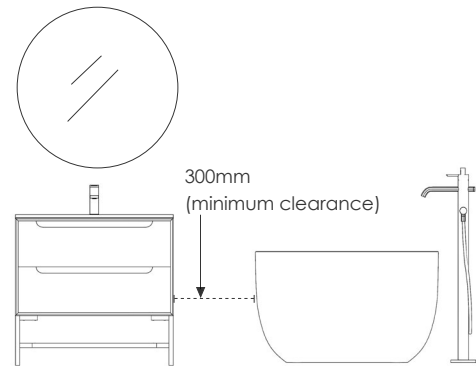
#### 2 POSITIONING

All Ottil vanities must be installed a minimum of 400mm away from designated wet areas and heating units.

Do not expose furniture to shower spray.

It is important that your bathroom is adequately ventilated to eliminate moisture build up. High humidity will lead to permanent dampness and mould resulting in a deterioration of the materials in your bathroom.

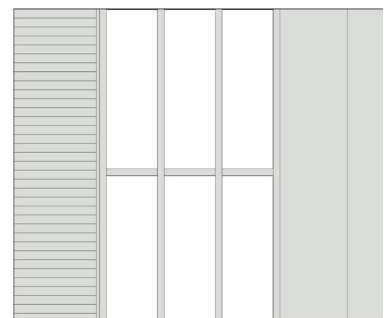
Refer to [ottiaustralia.com.au](http://ottiaustralia.com.au) for more positioning and clearance guides



#### 3 FIX | HANG YOUR VANITY TO SUPPORT BEAMS

Should your wall be a sheeted wall, hung your bathroom furniture and wall hung basins to supporting nogs fitted between the studs inside your wall, as detailed. This will give a solid wall backing to attach the vanity to. If necessary fix additional support nogs at desired height for cabinet and basin fixing. Ensure total width of support nog exceeds vanity width.

It is mandatory that the vanity to be secured to the stud and noggins which is behind your plaster board and tiling.



4

## CHECK YOUR WALL LEVELS:

Before starting, check that your wall is plumb and flat.

To ensure doors and drawers operate smoothly if wall is out of alignment use packers to level vanity so it sits level, avoiding the cabinet from twisting out of alignment and not function correctly.

Ensure the wall is tiled behind the cabinet and clearance allowed for doors and drawers to open (filler panel required where cabinet is going hard against a wall).

It is recommended that vanities are installed 300mm away from any wet area such as baths, spas and showers.

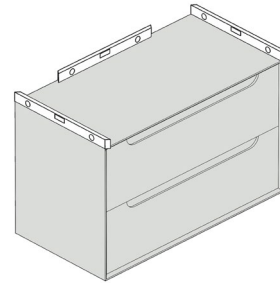
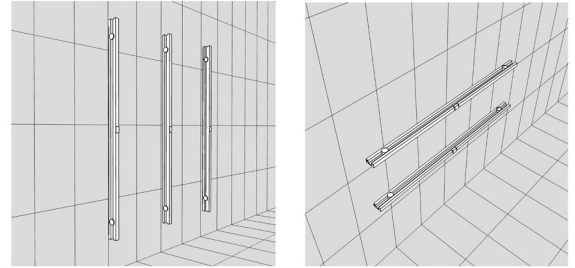
Ensure your tiled wall is not bowed or warped in either direction.

Installation onto a bowed or twisted wall may result in any or all of the following occurring:

- Cracks in joinery
- Drawer misalignments
- Hardware not performing correctly

If it is not possible to make the wall or floor plumb and straight you must pack the vanity out so that it does not follow the out of aligned wall.

Floor standing vanities must sit on a level floor or be packed so they sit level and true.

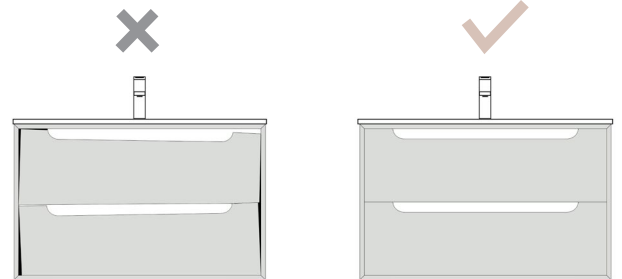


5

## Adjust The Doors & Drawers

After installation every cabinet you will need some adjustment as the doors and drawers move during transport and installation. The cabinet **MUST** be level before adjustments are made.

It is the responsibility of the installer to ensure these adjustments are done correctly. No warranty claims will be considered until this adjustment process is completed. Refer to the instructions below.

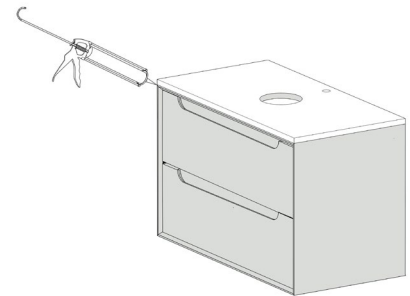


6

## Fit The Top & Seal Cabinet

For vanities, Add the top to the cabinet and align all sides, use a thin bead of non-acidic silicone on all four edges. Also seal all cabinet edges against floor and wall to prevent water penetration.

DO NOT Overtighten the wastes to the basins as it can lead to stress and damage to the basin or top. We recommend that the wastes be tightened by hand only, and then silicone sealed.



7

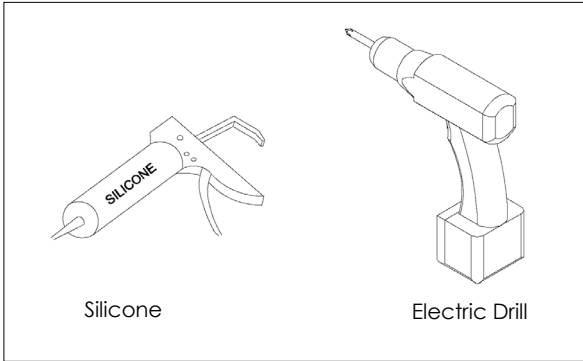
## Something Not Quite Right?

If you have a problem - and have carefully checked all the steps above to ensure it has been done right - give us a call. We'll be glad to help. To make it easy for us, please email some photos of the problem and of the job detail label to [service@ottiaustralia.com.au](mailto:service@ottiaustralia.com.au) including photos of the levels as shown in Step 1 and Step 2 above.

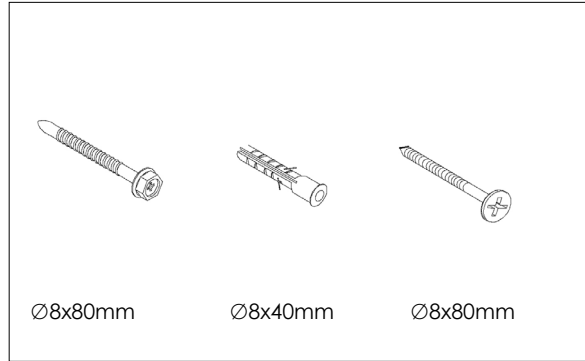
# INSTALLATION STEPS:

1

## REQUIRED TOOLS FOR INSTALLATION



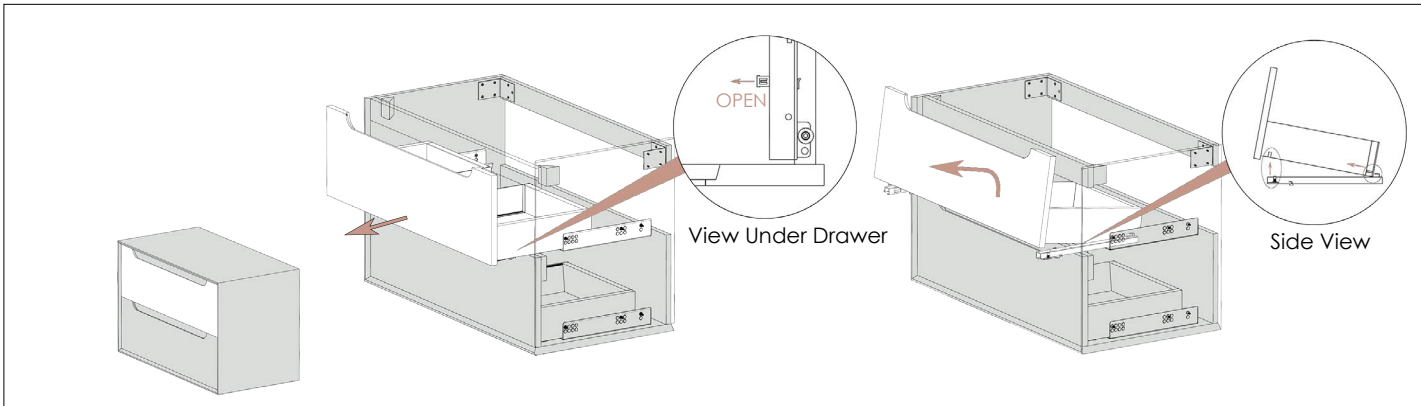
## PARTS INCLUDED



Use Temporary Supports to use whilst installing Vanity such as a sturdy crate or a box

2

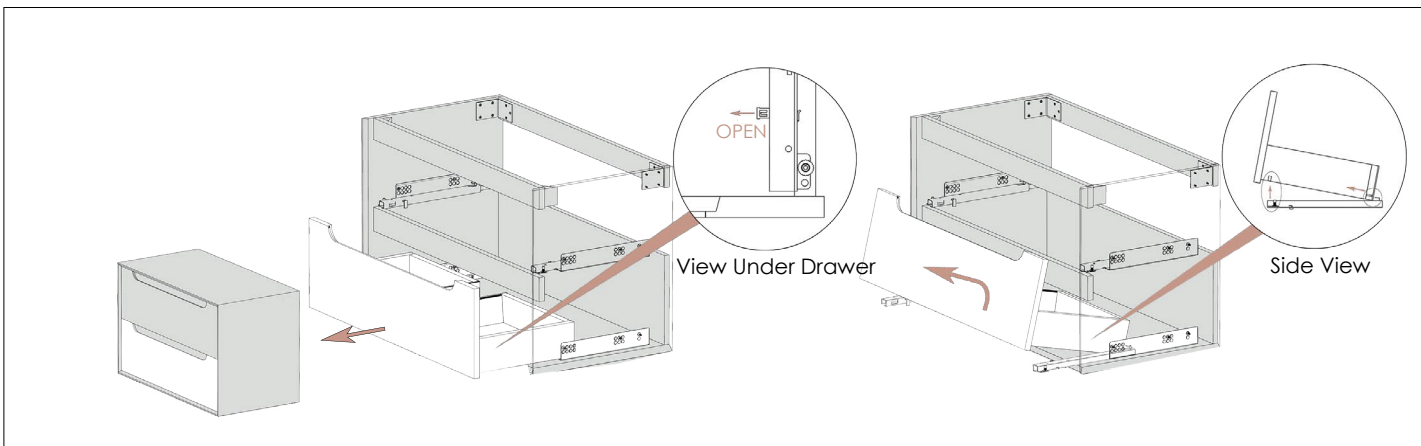
## REMOVING DREWS



Remove all drawers by following the provided offi Installation Guide. Exposed runners should be covered prior to re-fitting the drawers to prevent dirt and dust build up.

3

## REMOVING DREWS

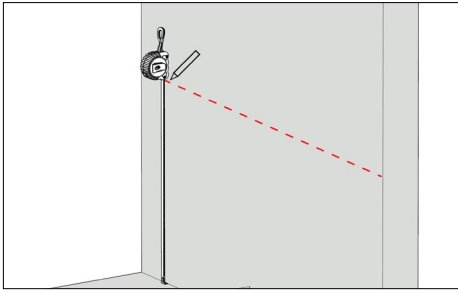


To Remove the drawer, pull the drawer out and locate the mini latch to unlock, located on the front section. The you will be able to lift the drawer out.

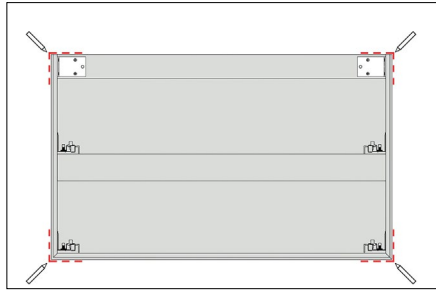
# INSTALLATION STEPS:

3

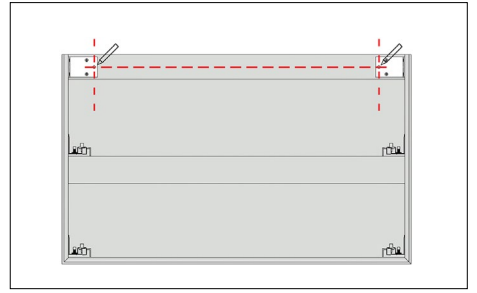
## LOCATION



## LEVELING



## MARK POSITIONS



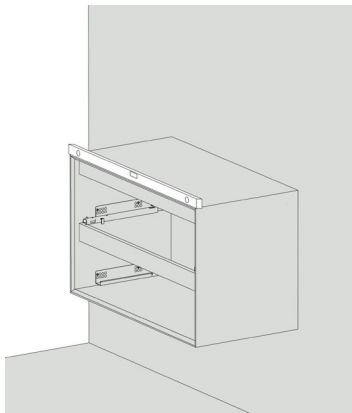
After completing the "Prior to Installation Checklist" on page 2, mark the position of the top of the vanity. Don't forget to factor in the top/basin thickness to get the correct height.

Note: Vanity must attach to a minimum of two support beams, mark these positions.

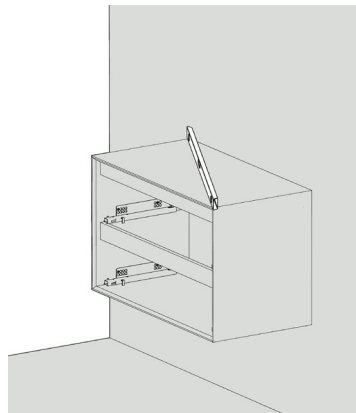
Measure correct plumbing locations and drill holes for plumbing in the back panel and/or base of the cabinet with an appropriate sized hole saw. Pre-drill screw locations for fastening to wall.

4

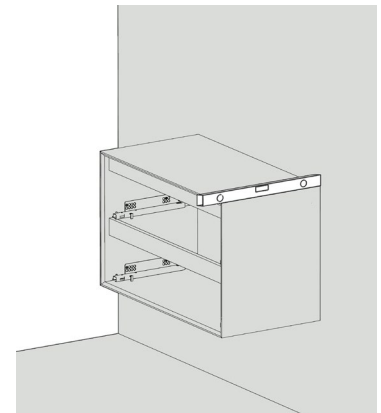
## LEVEL FRONT & BACK



## LEVEL ACROSS THE DIAGONAL



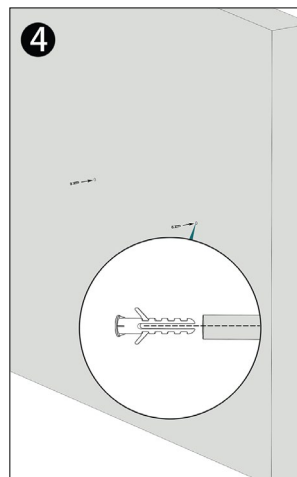
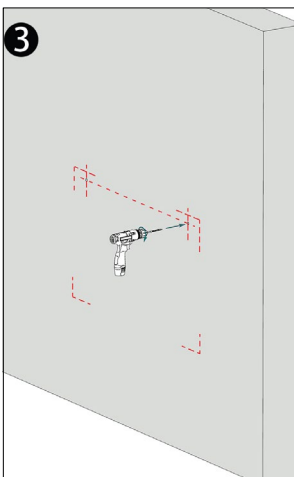
## LEVEL SIDES



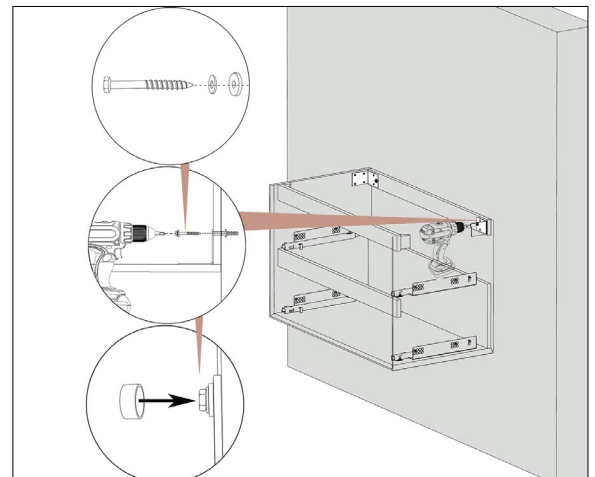
Temporary Supports to use whilst installing Vanity such as a sturdy crate or a box

5

## DRILL HOLES



## SECURING THE CABINET



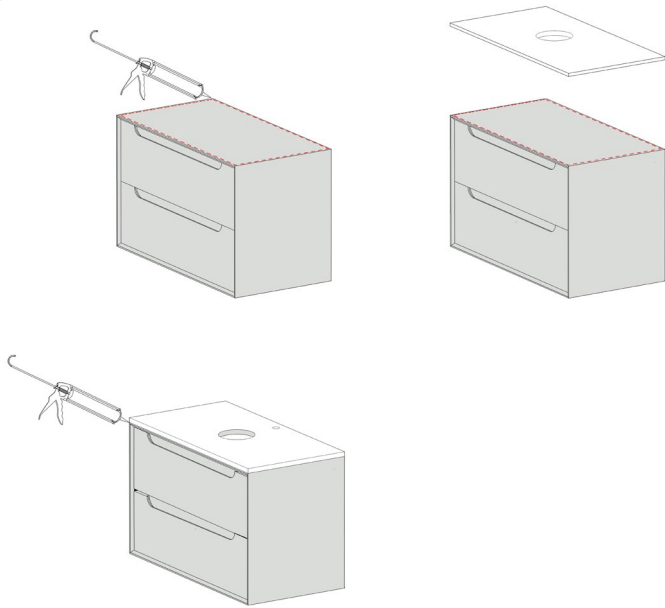
Drill holes for mounting screws provided, ensure these are drilled into supporting wall (through masonry, brick wall or noggins to support the cabinet load). Hammer in plugs into the drill holes.

Assemble screws, rings, and parts for mounting. Mount cabinet to wall and install all screws and rings. Ensure all fixing points are secure and tightly screwed in. Add caps to conceal screws.

## INSTALLATION STEPS:

5

### SEALING



Ensure a bead of antifungal, non- acidic silicone is applied to the top edges of both the front and either side panel of the cabinet prior to the installation of the top.

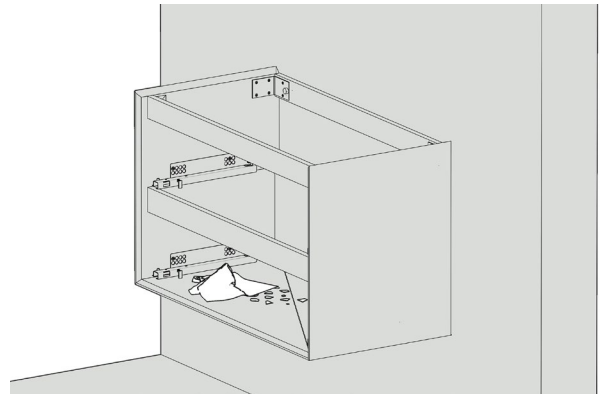
- Wipe off excess silicone at the time of silicone application.
- Upon installation of a separate top install a bead of silicone between the rear of the top and the wall.
- Remove excess silicone at the time of installation.
- Vanities with a pre fixed top also require silicon to be applied as detailed above.

**NOTE - If you have purchased a floor mounted vanity and elect to install it minus the floor mounted kick panel it will be necessary to obtain and install L shaped brackets. These brackets are to be installed in the top left and right corner of the vanity back to provide support to the side walls.**

6

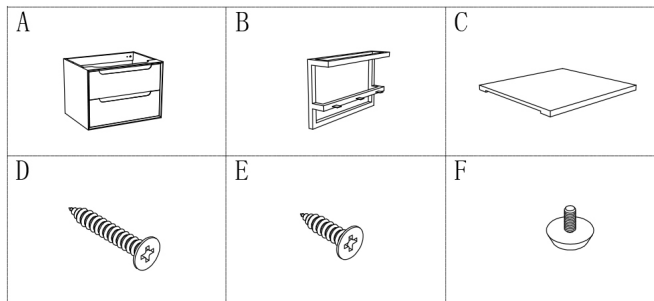
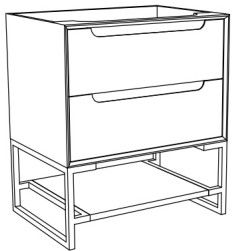
### CLEANING

- Wipe off excess silicone at the time of silicone application.
- Wipe out all dust and offcuts from drilling and cutting from inside the vanity, Dont forget to clean runners and hinges, before reinstalling doors and drawers.

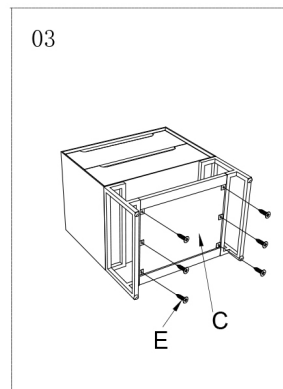
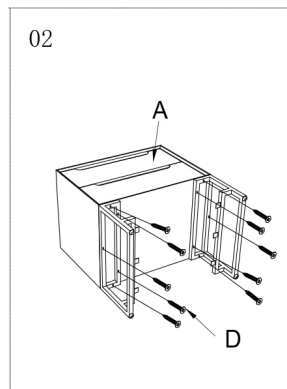
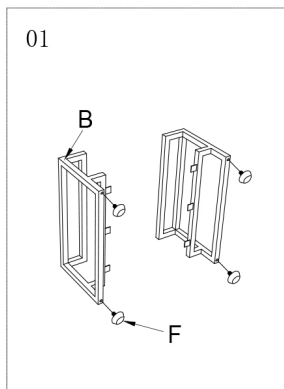


## LEGS INSTALLATION STEPS:

7



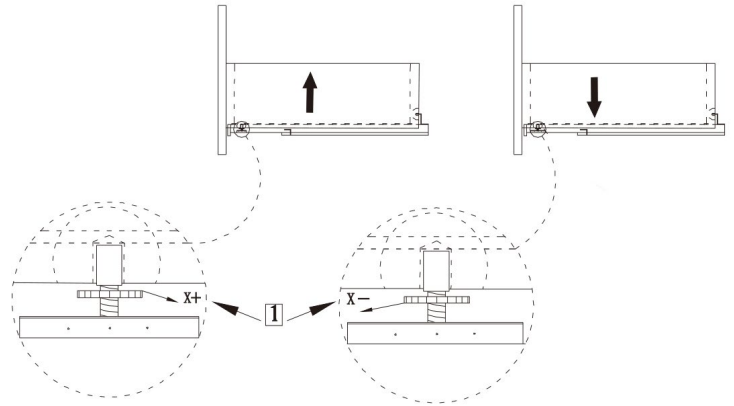
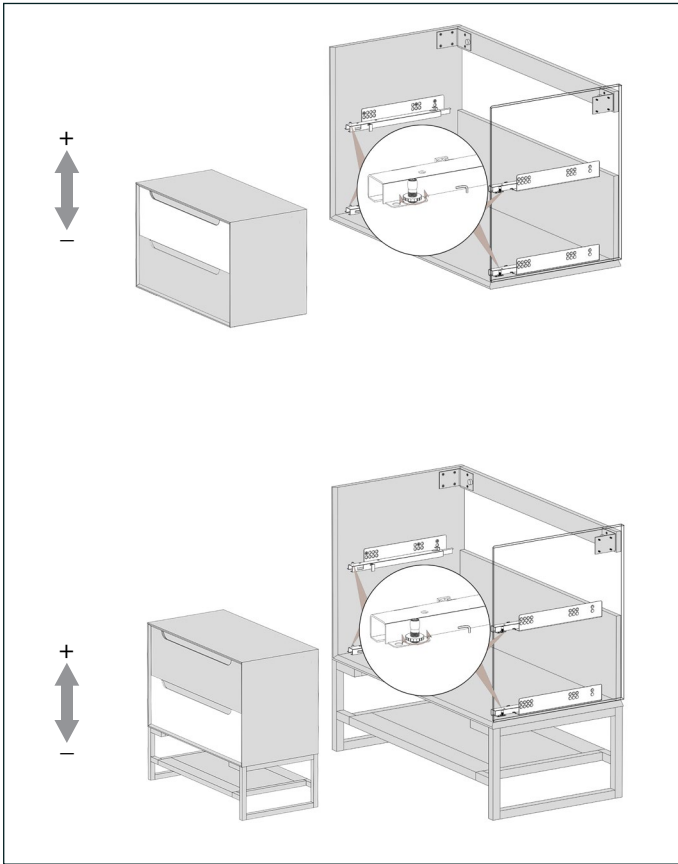
- Place Cabinet on its side on protective sheeting.
- Locate all parts.
- 01 - Arrange legs as per image 01 with L-bends facing internally. - Add rubber feet to leg bases.
- 02 - Line up with the bottom of the vanity ends and screw in lightly.
- 03 - Then, Line up shelf between the leg bases and screw shelf panel between to 2 leg ends using the allocated screw holes. Ensure shelf is installed above the middle section..



# ADJUST DOORS & DRAWERS

## 8 Drawer Front Height Adjustment

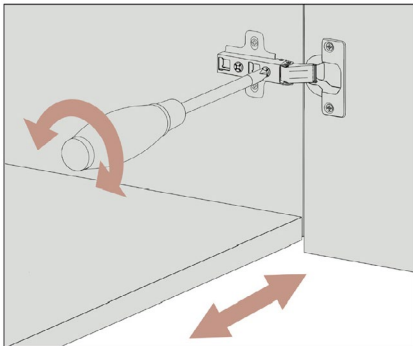
### Details



### Draw Adjustment

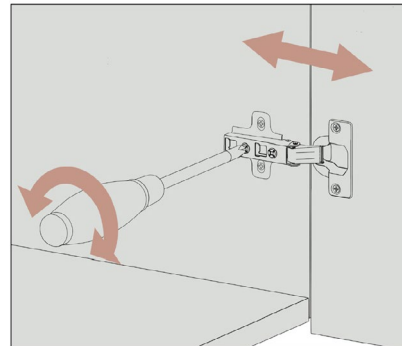
To adjust the level of your drawer, locate the metal dial under the drawer and rotate to adjust level up or down.

## 9 DOOR HINGE ALIGNMENT



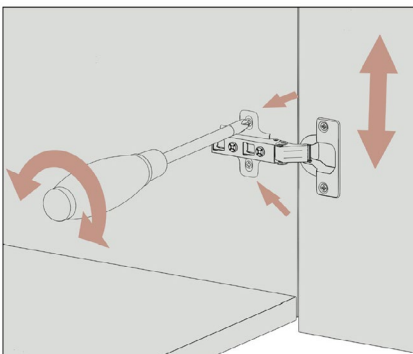
### DEPTH ADJUSTMENT

Loosen the top and bottom screw on mount plate, adjust door height by moving door up or down, then retighten screws.



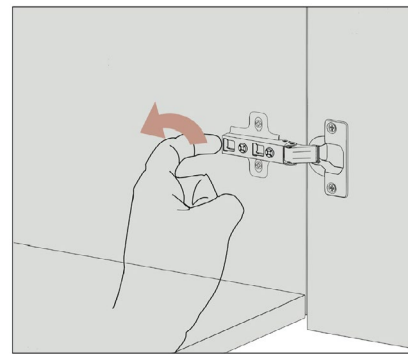
### SIDE ADJUSTMENT

Use front screw to move door to the left or right, or to level each door



### HEIGHT ADJUSTMENT

Use back screw to move door inward or outward from carcass.





# WARRANTY

## PRODUCTS

Vanities  
Parts and labour - 12 Months

## DOMESTIC WARRANTY Product Replacement

10 years

## COMMERCIAL WARRANTY Product Replacement

12 Months

This warranty only applies to defects which have arisen solely from faulty materials or workmanship in the Products.

Our products come with guarantees that cannot be excluded under the Australian Consumer Law.

A replacement or refund will be offered for any major failure, upon inspection by an authorised representative where a product is found to be defective in construction, material or assembly.

Goods maybe repaired or replaced if the goods fail to be of acceptable quality and the failure does not amount to a major failure.

The warranty does not apply to other defects which may have arisen as a result of, without limitation, the following:

accidental damage, abnormal stress or strain, harsh or adverse

weather conditions, abuse, misuse, mistreatment including excessive water pressure, temperature, or

neglect of any kind of the products.

Alterations and repairs of the Products other than by an accredited and licensed service agent or technician are not covered.

## CONDITIONS

1. Items must be installed by a licensed tradesperson.
2. Failure is due to a fault in the manufacture of the product.
3. Proof of purchase is provided.
4. The installation of the product is in accordance with the instructions provided.

## EXCLUSIONS

To the fullest extent permitted by law, the manufacturer excludes all liability for damage or injury to any person, damage to any property and any indirect consequential or other loss or damage. Manufacturer will not be liable for the cost of installation or removal of any unit and the warranty will be VOIDED if damage occurred during or after INSTALLATION or a damaged or incorrect unit has

been installed. Door and drawer adjustment; Unsuitable or improper use; Incorrect installation or installation not in accordance with the instructions provided; Installation or part installation by the purchaser or any person other than a LICENSED tradesperson; Normal wear and tear; Inadequate or complete lack of maintenance; water damage; chemical, electrochemical or electrical influences; excessive heat damage or Harsh detergents or abrasive cleaners used on product finishes, are NOT considered a warranty issue.

## To Make a claim:-

For all warranty queries customers are to contact the branch where the product was purchased.

These details can be found on your purchase invoice. Please provide them with photos or/video or issue if applicable, to illustrate issue clearly.

## Please provide:-

1. Name/Model No of product
2. Proof of purchase
3. Proof of installation (by licensed plumber/electrian)
2. Photo/Video of the issue
3. Contact name, number and address

## SERVICE CALL OUT FEES & CHARGES

In the event of a call out for issues covered under the manufacturer warranty, no call out fees will apply.

If Otti Australia is called out and the cause of the issue falls within the warranty exclusions or the installation instructions have

not been adhered to, the following charges will apply:

- Call out fee: \$200.00 initial cost, first 15 minutes included.

- Service time onsite: \$30/ billed in 15 minute increments.

- Call out times: Business hours 9am - 5pm.

Note: Response time will depend on technician availability.

## SERVICE CALL OUT FEES & CHARGES

In the event of a call out for issues covered under the manufacturer warranty, no call out fees will apply.

If Otti Australia is called out and the cause of the issue falls within the warranty exclusions or the installation instructions have

not been adhered to, the following charges will apply:

- Call out fee: \$200.00 initial cost, first 15 minutes included.

- Service time onsite: \$30/ billed in 15 minute increments.

- Call out times: Business hours 9am - 5pm.

Note: Response time will depend on technician availability.

Should you need assistance please call on 02 97721306

Service warranty Claims register your claim at <https://www.otti australia.com.au/page/5/warranty>