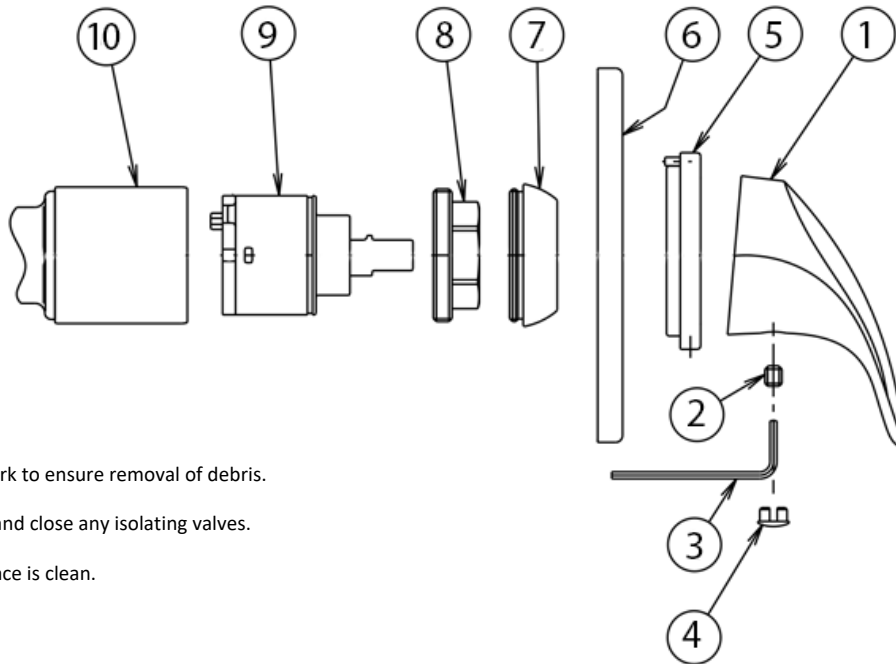


Note: This product must be installed by a Licensed Plumber. This is a general installation guide – factors may alter the installation method.

## Elite Bath/Shower Mixer



### Before Installation

Flush through the pipe work to ensure removal of debris.

Turn off the water mains and close any isolating valves.

Ensure the mounting surface is clean.

### Installation

Fit the mixer body (10) onto a suitable mounting plate or noggin in the wall and secure using screws through the holes in its base. When facing the mixer, the connections should be as follows;

- Hot water inlet connection to the left
- Cold water inlet connection to the right
- Mixed water outlet connection, vertically upwards
- Check all connections for leaks

Mixer body must be installed square to the wall/tile face to ensure cover plate sits flush.

Fit cover plate (6) followed by retaining ring (5) onto mixer body (10). Rotate the retaining ring until pan is engaged in slot in cover plate and position so that the screws (11) are at the bottom. Push the retaining ring and cover plate firmly against wall/tile face and tighten screws (11) using 2mm allen key (12)

Fit handle (1) taking care that it is pushed fully down, tighten screw (2) using the 2.5mm allen key (3). Fit indicator plug (4) with hot to the left.

- 1 Handle
- 2 Screw
- 3 Allen Key
- 4 Indicator Plug
- 5 Retaining Ring
- 6 Cover Plate
- 7 Cap
- 8 Nut
- 9 Cartridge
- 10 Mixer Body

### Replacing cartridge

Turn off hot and cold water supplies.

Carefully remove indicator plug (4), loosen screw (2) and remove handle (1). Unscrew cap (7), unscrew retaining nut (8) and remove the old cartridge (9).

Ensure inside of mixer body (10) is clean. First check that seal is in position in base of new cartridge then fit new cartridge (9) into mixer body, taking care that two lugs on base of cartridge fit into mating holes in mixer body. Screw on nut (8), this should be tightened to a torque of 10Nm. Replace cap (7), tighten by hand.

Hot and cold water pressure should be equal  
 Inlet pressure range 150 – 1000 kPa  
 Maximum hot water temperature is 80°C



Always use a soft, damp cloth with mild detergent to wipe your tap clean. Avoid using abrasive detergents, cleaning powders, scouring pads, strong disinfectants, cleaners containing hydrochloric acid or phosphoric acid as this will cause damage to the finish.