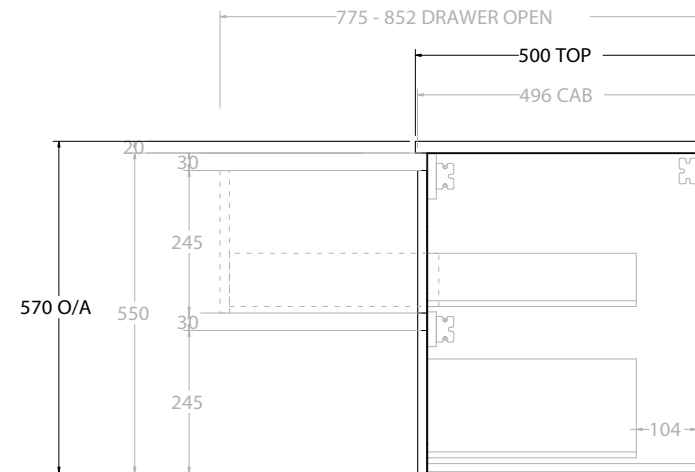
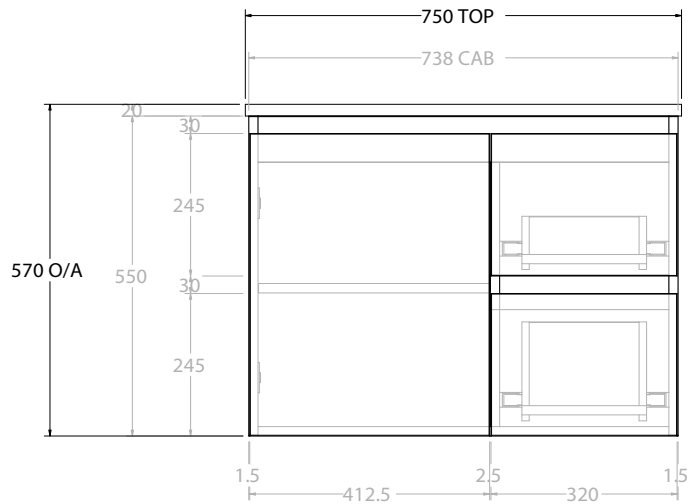
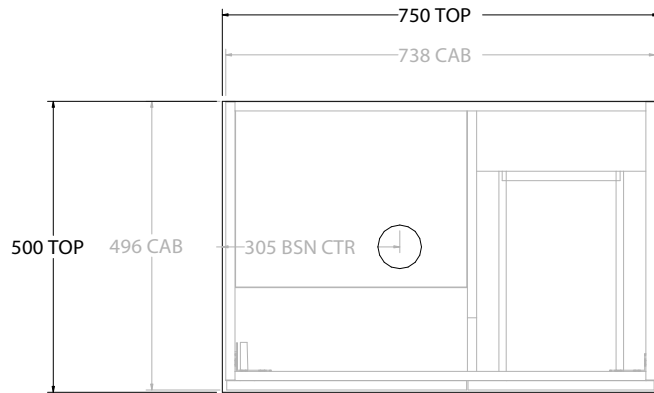


| | | |
|----------------|---|--------------------|
| PRODUCT: | GLACIER DOOR & DRAWER TWIN 750 WALL HUNG CENTRE BASIN | |
| CODE: | LITE: GLLFCW0750WHC | PRO: GLPFCW0750WHC |
| MOUNTING: | WALL HUNG | |
| SIZE: | 750W X 500D X 570H | |
| CONFIGURATION: | DOOR & DRAWER | |
| VERSION: | 01 | DATE: 08/16/22 |

| | |
|---|------------------|
| TOP: | BENCHTOP |
| BASIN POSITION: | CENTRE BASIN |
| FOR TOP OPTIONS PLEASE ADD ONE OF THE FOLLOWING TO THE END OF PRODUCT CODE: | |
| | CHERRY PIE = CP |
| | FRIDAY = FR |
| | CAESARSTONE = CS |

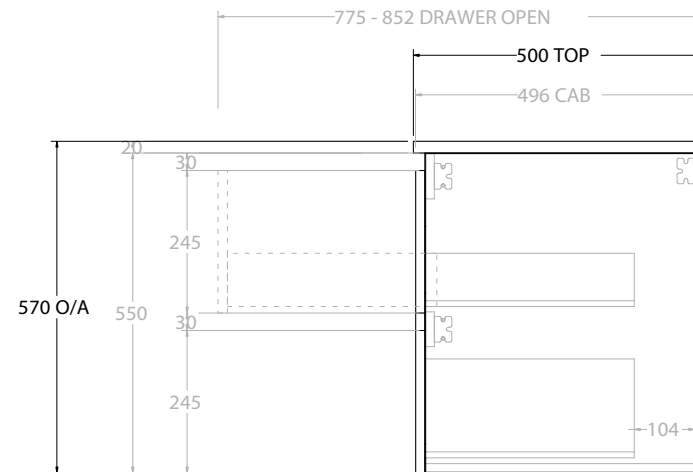
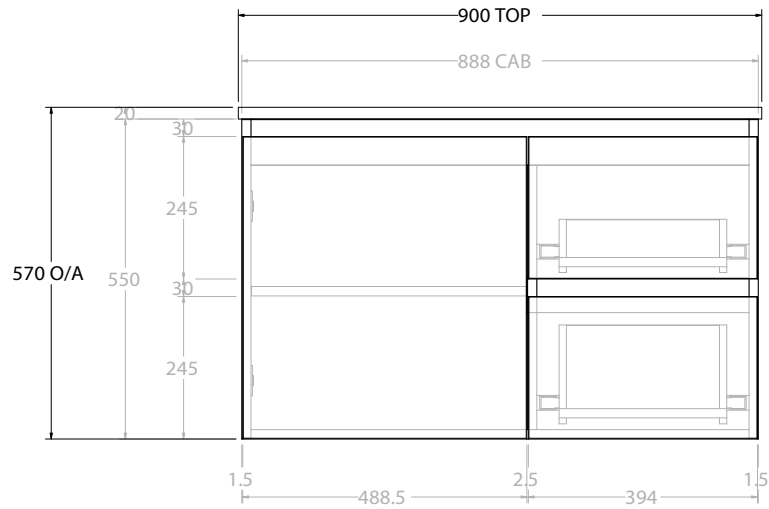
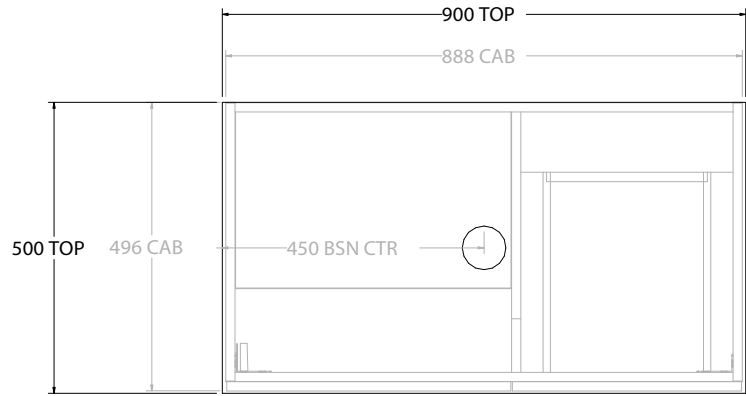
| |
|---|
| NOTES: |
| ALL DIMENSIONS ARE NOMINAL AND SUBJECT TO CHANGE. |
| DO NOT DRILL OR ROUGH IN UNTIL YOU HAVE RECEIVED AND MEASURED YOUR PRODUCT. |
| ALL DIMENSIONS ARE IN MILLIMETRES. |
| DO NOT MEASURE FROM DRAWING. |



| | | |
|----------------|---|---------------------|
| PRODUCT: | GLACIER DOOR & DRAWER TWIN 750 WALL HUNG OFFSET BASIN | |
| CODE: | LITE: GLLFCW0750WHL* | PRO: GLPFCW0750WHL* |
| MOUNTING: | WALL HUNG | |
| SIZE: | 750W X 500D X 570H | |
| CONFIGURATION: | DOOR & DRAWER | |
| VERSION: | 01 | DATE: 08/16/22 |

| | |
|---|--------------|
| TOP: | BENCHTOP |
| BASIN POSITION: | OFFSET BASIN |
| FOR TOP OPTIONS PLEASE ADD ONE OF THE FOLLOWING TO THE END OF PRODUCT CODE: | |
| CHERRY PIE = CP | |
| FRIDAY = FR | |
| CAESARSTONE = CS | |

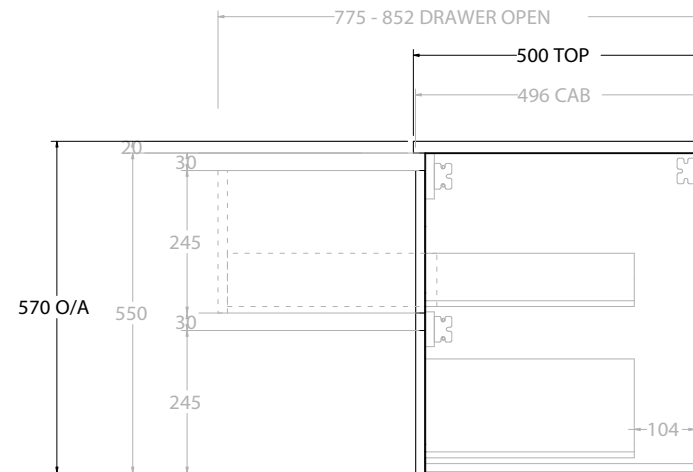
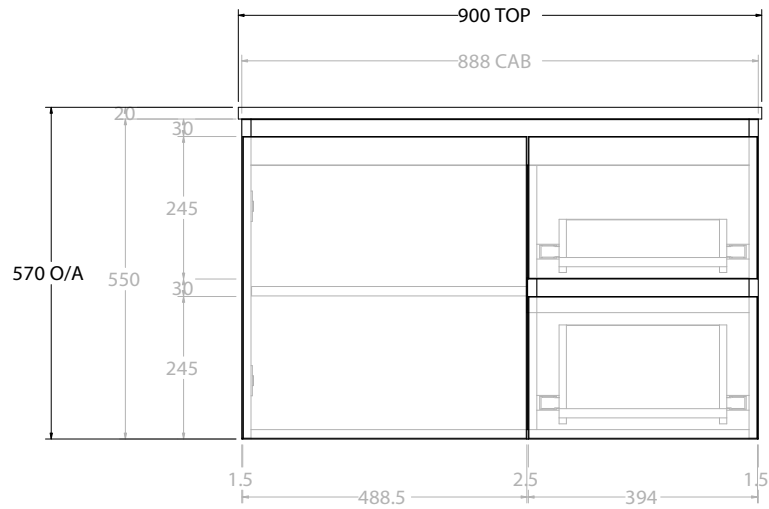
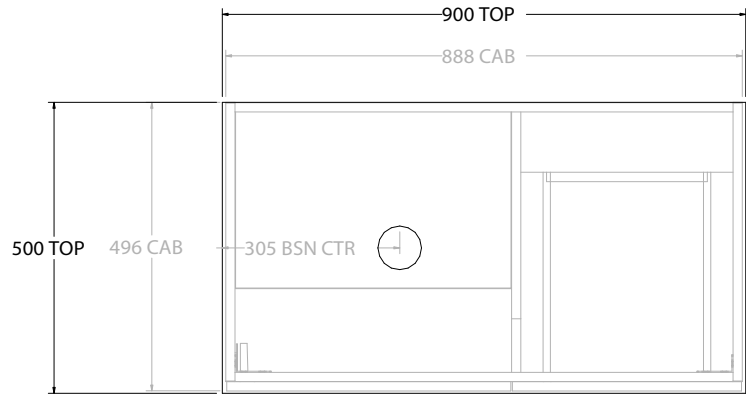
| |
|--|
| NOTES: |
| ALL DIMENSIONS ARE NOMINAL AND SUBJECT TO CHANGE. |
| DO NOT DRILL OR ROUGH IN UNTIL YOU HAVE RECEIVED AND MEASURED YOUR PRODUCT. |
| ALL DIMENSIONS ARE IN MILLIMETRES. |
| DO NOT MEASURE FROM DRAWING. |
| *LEFT HAND OFFSET PICTURED, RIGHT HAND OFFSET IS SAME BUT MIRRORED (REPLACE CODE SUFFIX L, WITH R) |



| | | |
|----------------|---|--------------------|
| PRODUCT: | GLACIER DOOR & DRAWER TWIN 900 WALL HUNG CENTRE BASIN | |
| CODE: | LITE: GLLFCW0900WHC | PRO: GLPFCW0900WHC |
| MOUNTING: | WALL HUNG | |
| SIZE: | 900W X 500D X 570H | |
| CONFIGURATION: | DOOR & DRAWER | |
| VERSION: | 01 | DATE: 08/16/22 |

| | |
|---|------------------|
| TOP: | BENCHTOP |
| BASIN POSITION: | CENTRE BASIN |
| FOR TOP OPTIONS PLEASE ADD ONE OF THE FOLLOWING TO THE END OF PRODUCT CODE: | |
| | CHERRY PIE = CP |
| | FRIDAY = FR |
| | CAESARSTONE = CS |

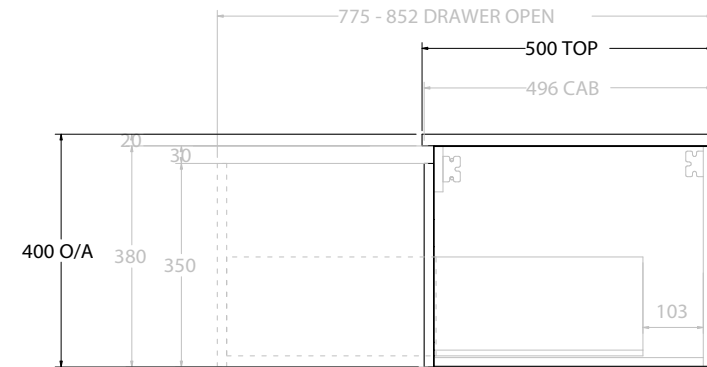
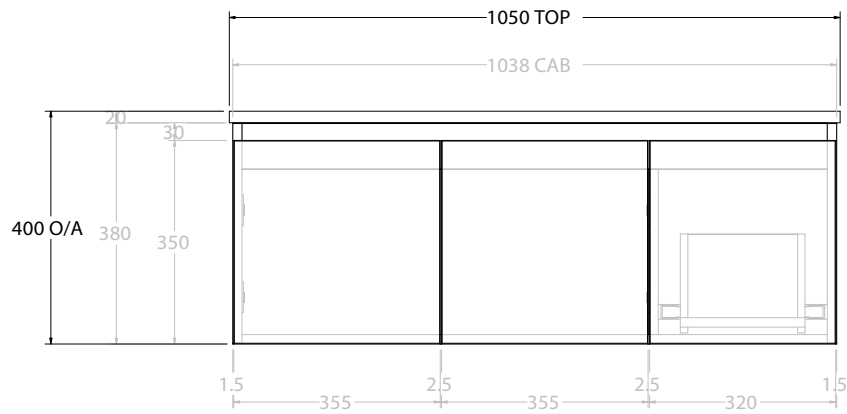
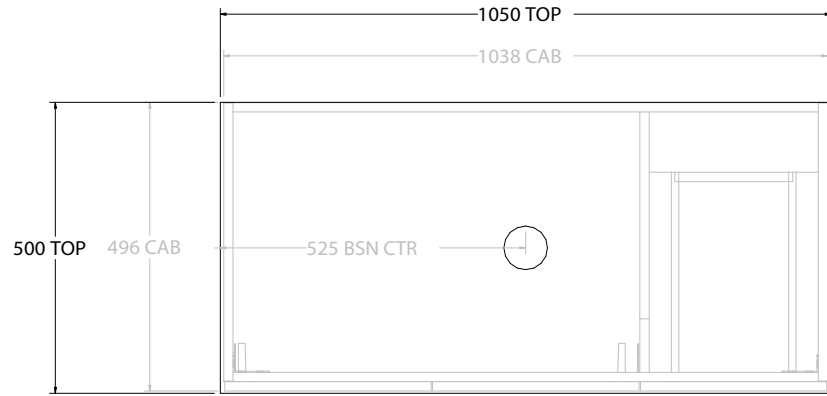
| |
|--|
| NOTES: |
| ALL DIMENSIONS ARE NOMINAL AND SUBJECT TO CHANGE. DO NOT DRILL OR ROUGH IN UNTIL YOU HAVE RECEIVED AND MEASURED YOUR PRODUCT. ALL DIMENSIONS ARE IN MILLIMETRES. DO NOT MEASURE FROM DRAWING. |



| | | |
|----------------|---|---------------------|
| PRODUCT: | GLACIER DOOR & DRAWER TWIN 900 WALL HUNG OFFSET BASIN | |
| CODE: | LITE: GLLFCW0900WHL* | PRO: GLPFCW0900WHL* |
| MOUNTING: | WALL HUNG | |
| SIZE: | 900W X 500D X 570H | |
| CONFIGURATION: | DOOR & DRAWER | |
| VERSION: | 01 | DATE: 08/16/22 |

| | |
|---|--------------|
| TOP: | BENCHTOP |
| BASIN POSITION: | OFFSET BASIN |
| FOR TOP OPTIONS PLEASE ADD ONE OF THE FOLLOWING TO THE END OF PRODUCT CODE: | |
| CHERRY PIE = CP | |
| FRIDAY = FR | |
| CAESARSTONE = CS | |

| |
|---|
| NOTES: |
| ALL DIMENSIONS ARE NOMINAL AND SUBJECT TO CHANGE. |
| DO NOT DRILL OR ROUGH IN UNTIL YOU HAVE RECEIVED AND MEASURED YOUR PRODUCT. |
| ALL DIMENSIONS ARE IN MILLIMETRES. |
| DO NOT MEASURE FROM DRAWING. |
| *LEFT HAND OFFSET PICTURED, RIGHT HAND OFFSET IS SAME BUT MIRRORRED (REPLACE CODE SUFFIX L, WITH R) |

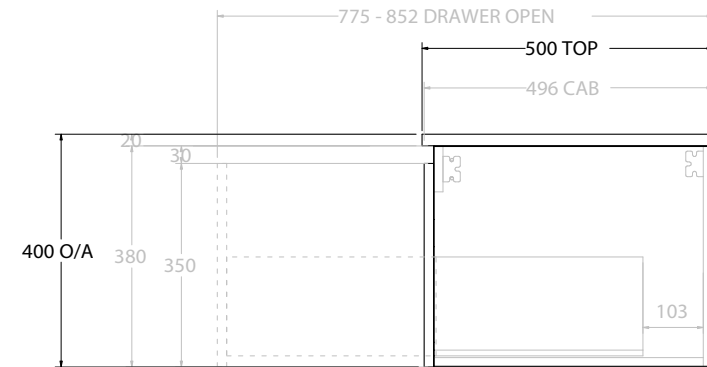
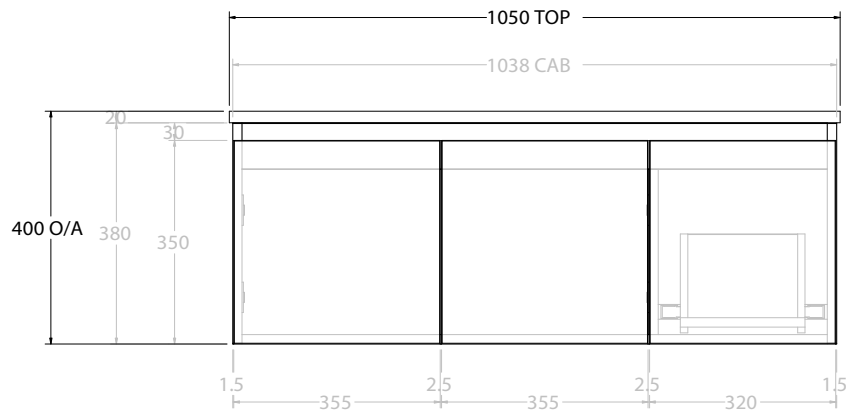
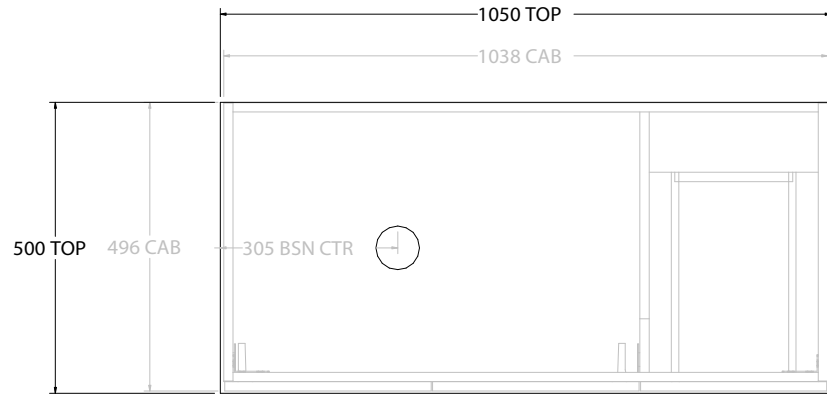


Adp

| | | |
|----------------|--|--------------------|
| PRODUCT: | GLACIER DOOR & DRAWER SLIM 1050 WALL HUNG CENTRE BASIN | |
| CODE: | LITE: GLLFCS1050WHC | PRO: GLPFCS1050WHC |
| MOUNTING: | WALL HUNG | |
| SIZE: | 1050W X 500D X 400H | |
| CONFIGURATION: | DOOR & DRAWER | |
| VERSION: | 01 | DATE: 15/08/22 |

| | |
|---|------------------|
| TOP: | BENCHTOP |
| BASIN POSITION: | CENTRE BASIN |
| FOR TOP OPTIONS PLEASE ADD ONE OF THE FOLLOWING TO THE END OF PRODUCT CODE: | |
| | CHERRY PIE = CP |
| | FRIDAY = FR |
| | CAESARSTONE = CS |

| |
|--|
| NOTES: |
| ALL DIMENSIONS ARE NOMINAL AND SUBJECT TO CHANGE. DO NOT DRILL OR ROUGH IN UNTIL YOU HAVE RECEIVED AND MEASURED YOUR PRODUCT. ALL DIMENSIONS ARE IN MILLIMETRES. DO NOT MEASURE FROM DRAWING. |

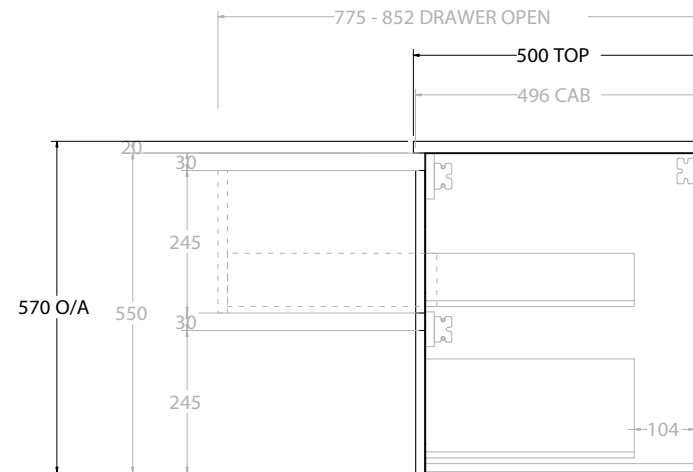
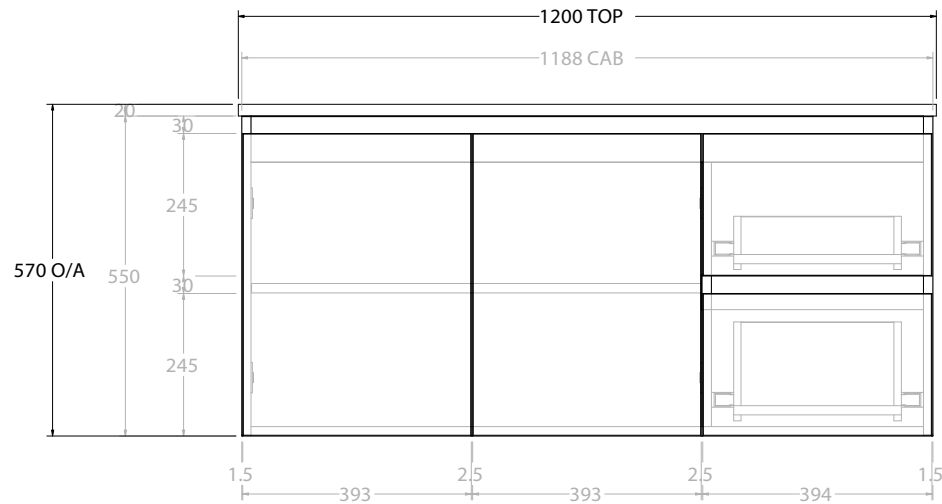
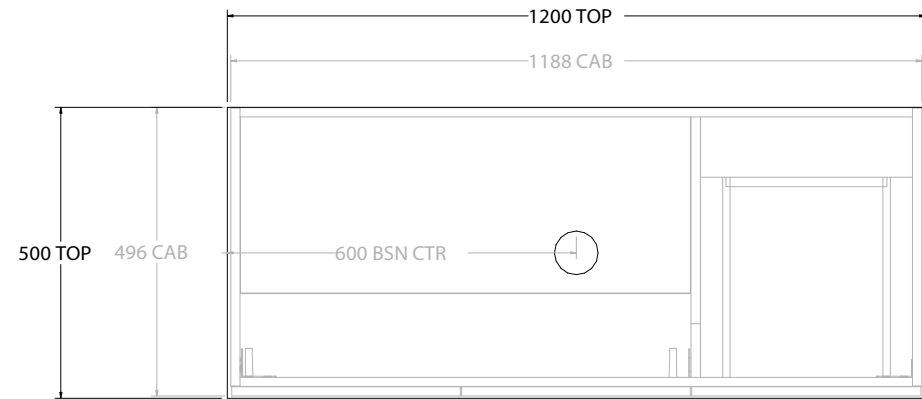


Adp

| | | |
|----------------|--|---------------------|
| PRODUCT: | GLACIER DOOR & DRAWER SLIM 1050 WALL HUNG OFFSET BASIN | |
| CODE: | LITE: GLLFCS1050WHL* | PRO: GLPFCS1050WHL* |
| MOUNTING: | WALL HUNG | |
| SIZE: | 1050W X 500D X 400H | |
| CONFIGURATION: | DOOR & DRAWER | |
| VERSION: | 01 | DATE: 15/08/22 |

| | |
|---|------------------|
| TOP: | BENCHTOP |
| BASIN POSITION: | OFFSET BASIN |
| FOR TOP OPTIONS PLEASE ADD ONE OF THE FOLLOWING TO THE END OF PRODUCT CODE: | |
| | CHERRY PIE = CP |
| | FRIDAY = FR |
| | CAESARSTONE = CS |

| |
|--|
| NOTES: |
| ALL DIMENSIONS ARE NOMINAL AND SUBJECT TO CHANGE. |
| DO NOT DRILL OR ROUGH IN UNTIL YOU HAVE RECEIVED AND MEASURED YOUR PRODUCT. |
| ALL DIMENSIONS ARE IN MILLIMETRES. |
| DO NOT MEASURE FROM DRAWING. |
| *LEFT HAND OFFSET PICTURED, RIGHT HAND OFFSET IS SAME BUT MIRRORED (REPLACE CODE SUFFIX L, WITH R) |

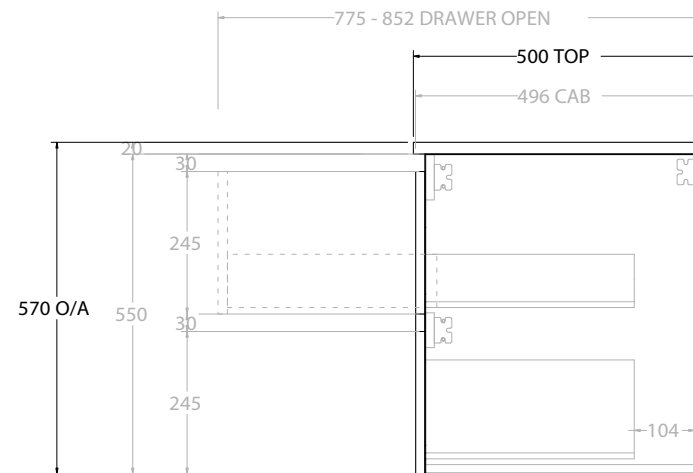
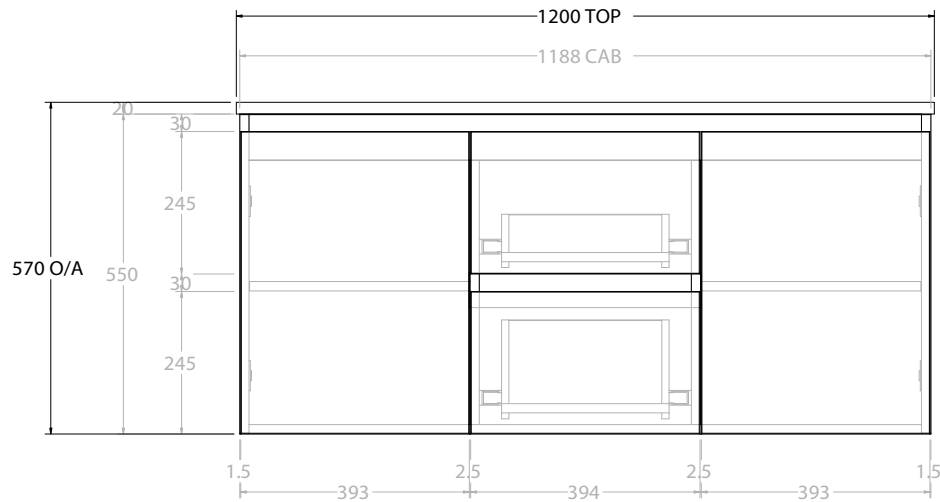
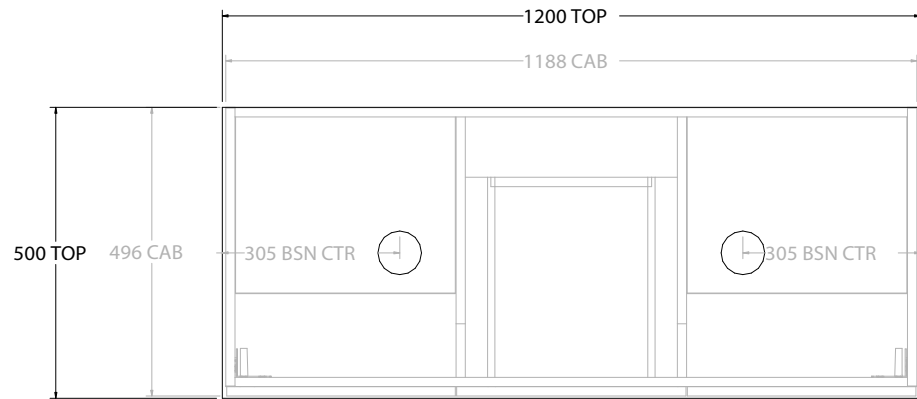


Adp

| | | |
|----------------|--|--------------------|
| PRODUCT: | GLACIER DOOR & DRAWER TWIN 1200 WALL HUNG CENTRE BASIN | |
| CODE: | LITE: GLLFCW1200WHC | PRO: GLPFCW1200WHC |
| MOUNTING: | WALL HUNG | |
| SIZE: | 1200W X 500D X 570H | |
| CONFIGURATION: | DOOR & DRAWER | |
| VERSION: | 01 | DATE: 08/16/22 |

| | |
|---|------------------|
| TOP: | BENCHTOP |
| BASIN POSITION: | CENTRE BASIN |
| FOR TOP OPTIONS PLEASE ADD ONE OF THE FOLLOWING TO THE END OF PRODUCT CODE: | |
| | CHERRY PIE = CP |
| | FRIDAY = FR |
| | CAESARSTONE = CS |

| |
|--|
| NOTES: |
| ALL DIMENSIONS ARE NOMINAL AND SUBJECT TO CHANGE. DO NOT DRILL OR ROUGH IN UNTIL YOU HAVE RECEIVED AND MEASURED YOUR PRODUCT. ALL DIMENSIONS ARE IN MILLIMETRES. DO NOT MEASURE FROM DRAWING. |

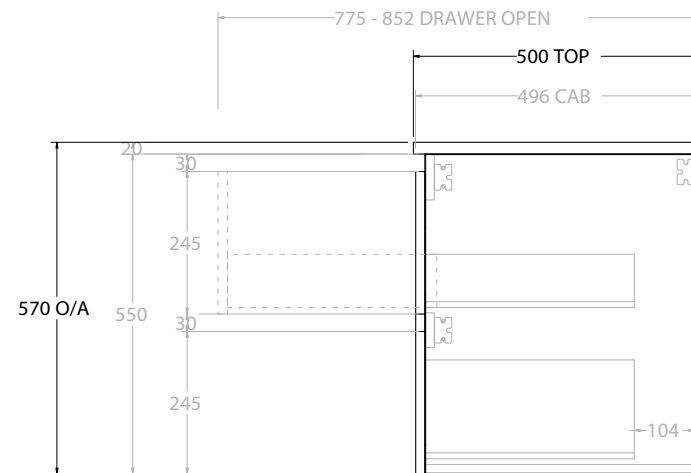
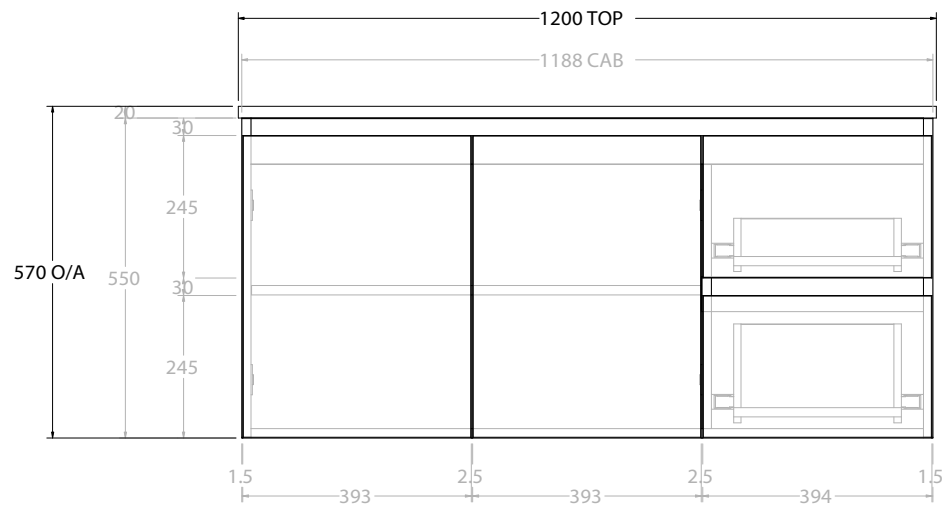
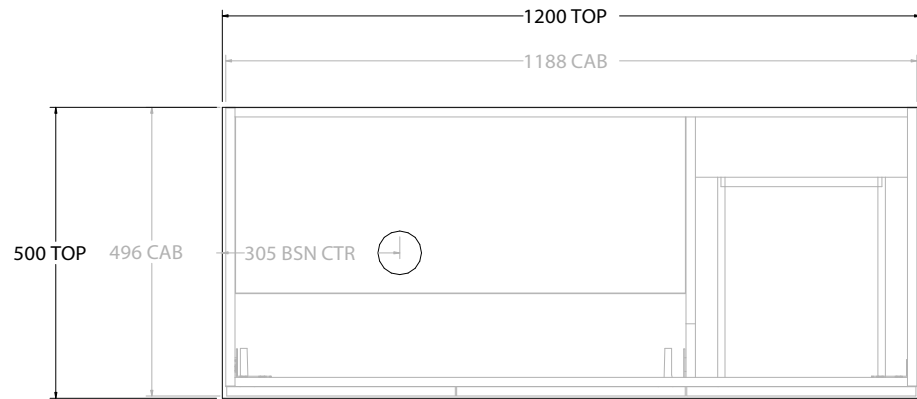


Adp

| | | |
|----------------|--|--------------------|
| PRODUCT: | GLACIER DOOR & DRAWER TWIN 1200 WALL HUNG DOUBLE BASIN | |
| CODE: | LITE: GLLFCW1200WHD | PRO: GLPFCW1200WHD |
| MOUNTING: | WALL HUNG | |
| SIZE: | 1200W X 500D X 570H | |
| CONFIGURATION: | DOOR & DRAWER | |
| VERSION: | 01 | DATE: 08/16/22 |

| | |
|---|------------------|
| TOP: | BENCHTOP |
| BASIN POSITION: | DOUBLE BASIN |
| FOR TOP OPTIONS PLEASE ADD ONE OF THE FOLLOWING TO THE END OF PRODUCT CODE: | |
| | CHERRY PIE = CP |
| | FRIDAY = FR |
| | CAESARSTONE = CS |

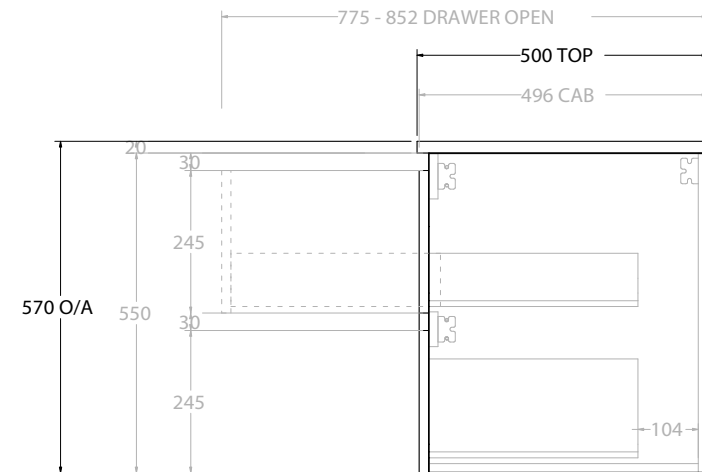
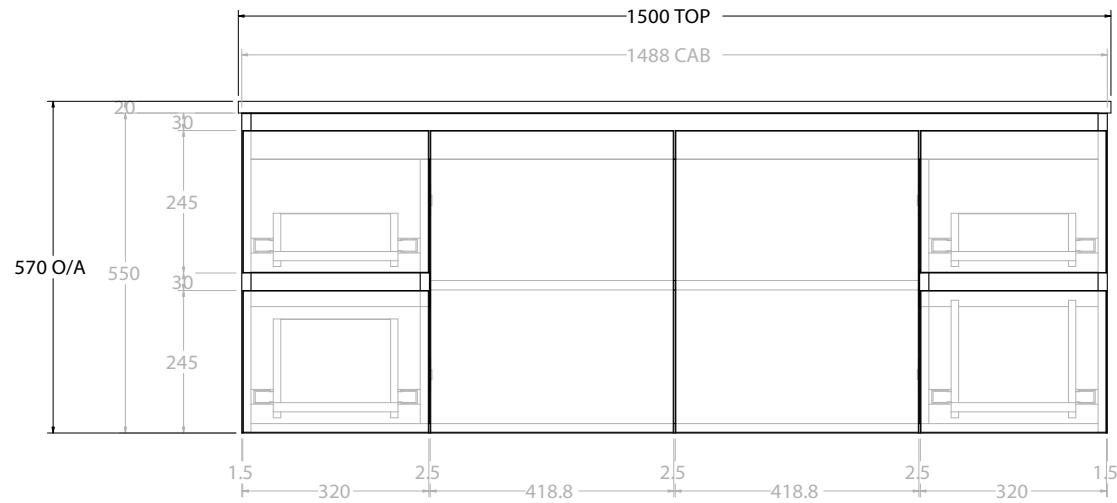
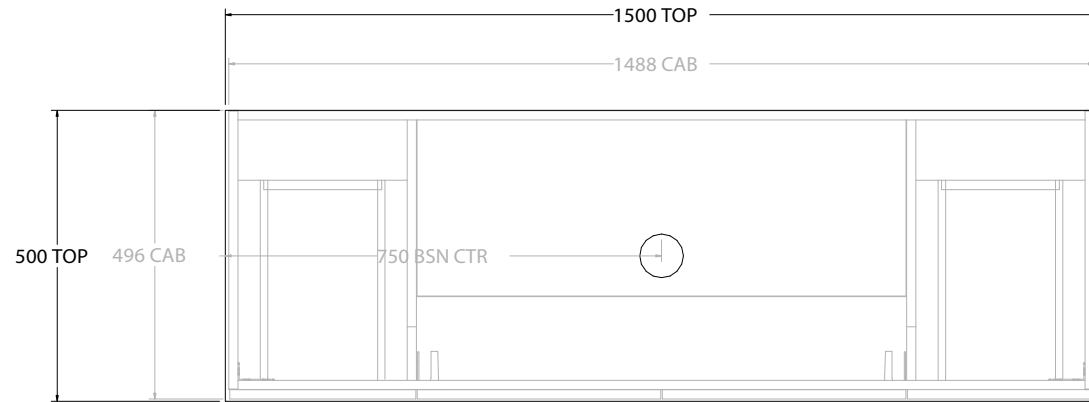
| |
|---|
| NOTES: |
| ALL DIMENSIONS ARE NOMINAL AND SUBJECT TO CHANGE. |
| DO NOT DRILL OR ROUGH IN UNTIL YOU HAVE RECEIVED AND MEASURED YOUR PRODUCT. |
| ALL DIMENSIONS ARE IN MILLIMETRES. |
| DO NOT MEASURE FROM DRAWING. |



| | | |
|----------------|--|---------------------|
| PRODUCT: | GLACIER DOOR & DRAWER TWIN 1200 WALL HUNG OFFSET BASIN | |
| CODE: | LITE: GLLFCW1200WHL* | PRO: GLPFCW1200WHL* |
| MOUNTING: | WALL HUNG | |
| SIZE: | 1200W X 500D X 570H | |
| CONFIGURATION: | DOOR & DRAWER | |
| VERSION: | 01 | DATE: 08/16/22 |

| | |
|---|------------------|
| TOP: | BENCHTOP |
| BASIN POSITION: | OFFSET BASIN |
| FOR TOP OPTIONS PLEASE ADD ONE OF THE FOLLOWING TO THE END OF PRODUCT CODE: | |
| | CHERRY PIE = CP |
| | FRIDAY = FR |
| | CAESARSTONE = CS |

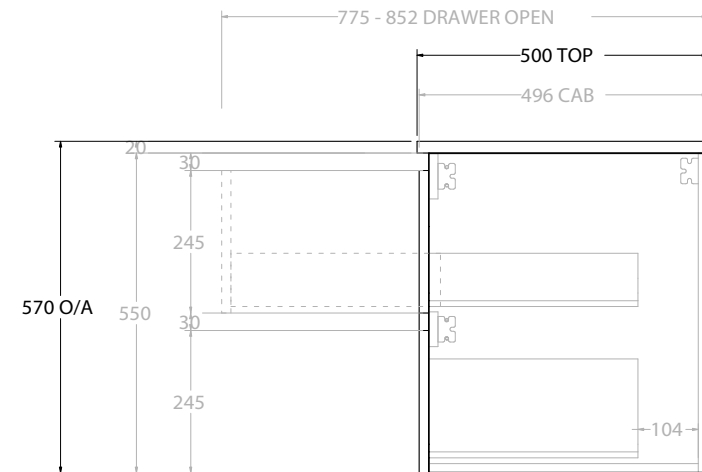
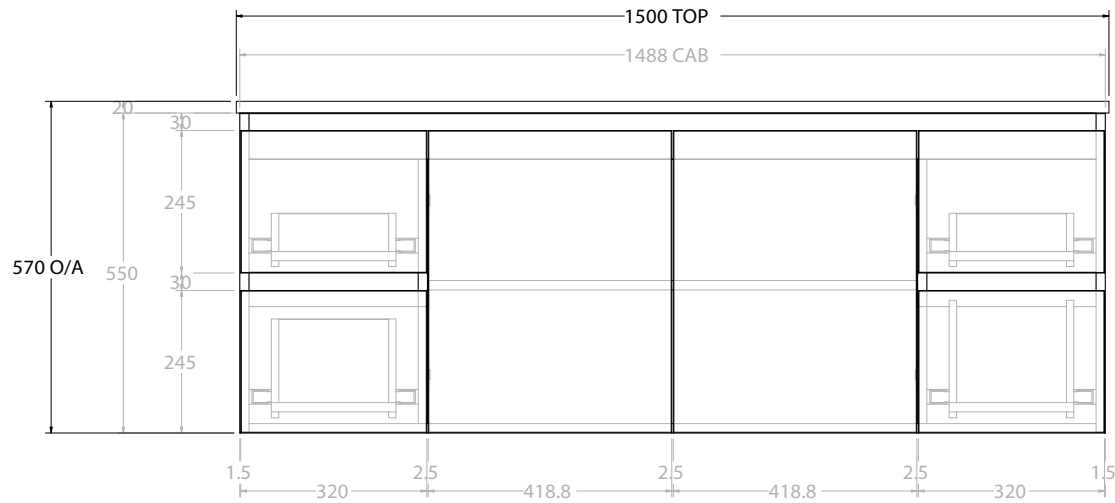
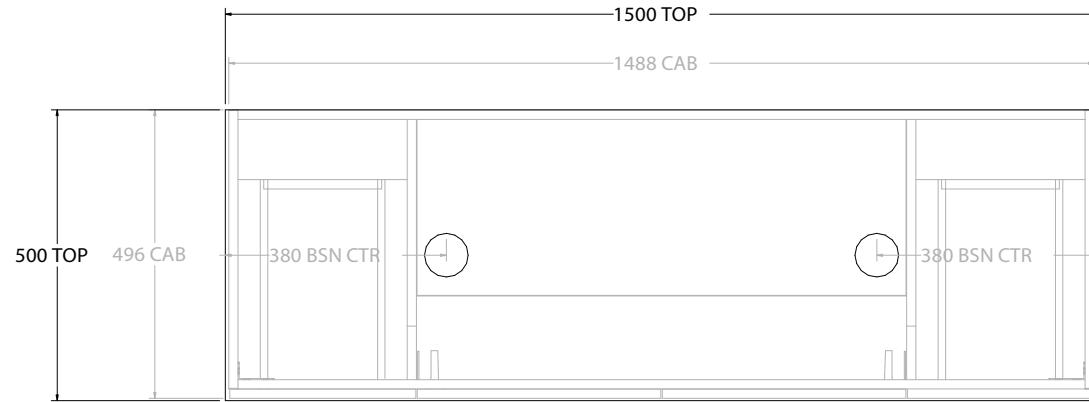
| |
|---|
| NOTES: |
| ALL DIMENSIONS ARE NOMINAL AND SUBJECT TO CHANGE. |
| DO NOT DRILL OR ROUGH IN UNTIL YOU HAVE RECEIVED AND MEASURED YOUR PRODUCT. |
| ALL DIMENSIONS ARE IN MILLIMETRES. |
| DO NOT MEASURE FROM DRAWING. |
| *LEFT HAND OFFSET PICTURED, RIGHT HAND OFFSET IS SAME BUT MIRRORRED (REPLACE CODE SUFFIX L, WITH R) |



| | | |
|----------------|--|--------------------|
| PRODUCT: | GLACIER DOOR & DRAWER TWIN 1500 WALL HUNG CENTRE BASIN | |
| CODE: | LITE: GLLFCW1500WHC | PRO: GLPFCW1500WHC |
| MOUNTING: | WALL HUNG | |
| SIZE: | 1500W X 500D X 570H | |
| CONFIGURATION: | DOOR & DRAWER | |
| VERSION: | 01 | DATE: 08/16/22 |

| | |
|---|------------------|
| TOP: | BENCHTOP |
| BASIN POSITION: | CENTRE BASIN |
| FOR TOP OPTIONS PLEASE ADD ONE OF THE FOLLOWING TO THE END OF PRODUCT CODE: | |
| | CHERRY PIE = CP |
| | FRIDAY = FR |
| | CAESARSTONE = CS |

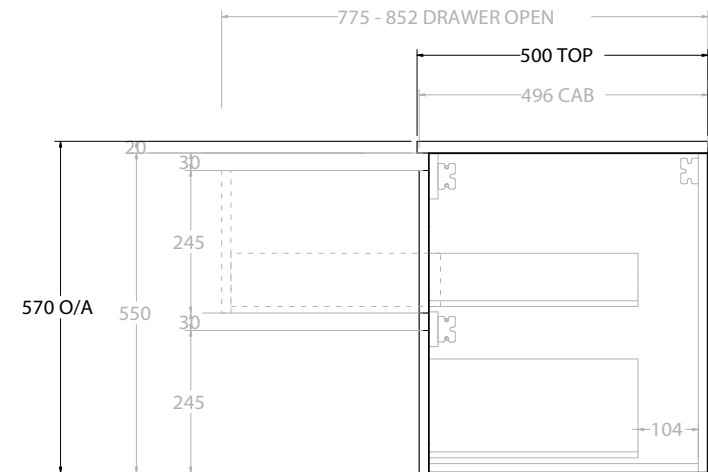
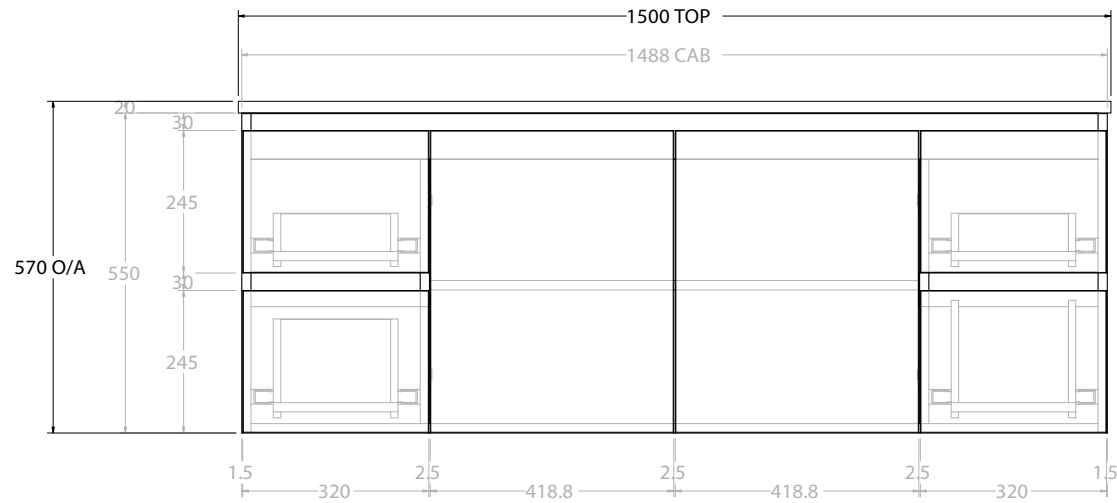
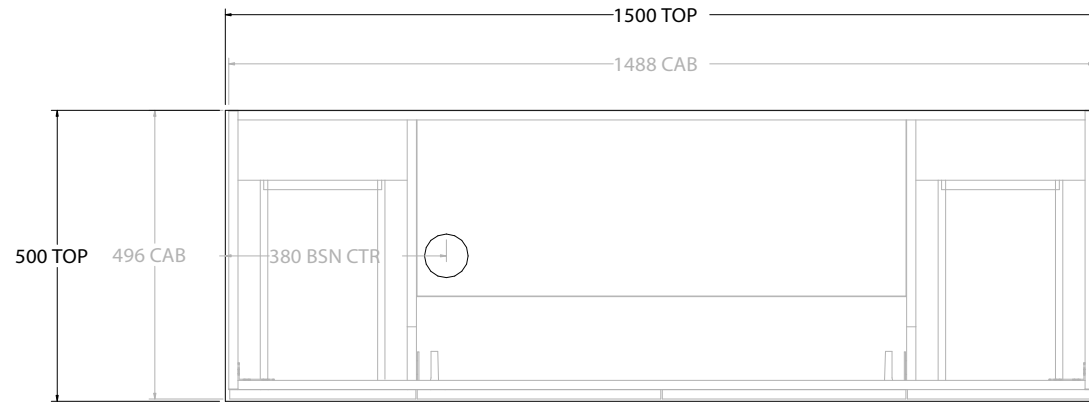
| |
|--|
| NOTES: |
| ALL DIMENSIONS ARE NOMINAL AND SUBJECT TO CHANGE. DO NOT DRILL OR ROUGH IN UNTIL YOU HAVE RECEIVED AND MEASURED YOUR PRODUCT. ALL DIMENSIONS ARE IN MILLIMETRES. DO NOT MEASURE FROM DRAWING. |



| | | |
|----------------|--|--------------------|
| PRODUCT: | GLACIER DOOR & DRAWER TWIN 1500 WALL HUNG DOUBLE BASIN | |
| CODE: | LITE: GLLFCW1500WHD | PRO: GLPFCW1500WHD |
| MOUNTING: | WALL HUNG | |
| SIZE: | 1500W X 500D X 570H | |
| CONFIGURATION: | DOOR & DRAWER | |
| VERSION: | 01 | DATE: 08/16/22 |

| | |
|---|------------------|
| TOP: | BENCHTOP |
| BASIN POSITION: | DOUBLE BASIN |
| FOR TOP OPTIONS PLEASE ADD ONE OF THE FOLLOWING TO THE END OF PRODUCT CODE: | |
| | CHERRY PIE = CP |
| | FRIDAY = FR |
| | CAESARSTONE = CS |

| |
|--|
| NOTES: |
| ALL DIMENSIONS ARE NOMINAL AND SUBJECT TO CHANGE. DO NOT DRILL OR ROUGH IN UNTIL YOU HAVE RECEIVED AND MEASURED YOUR PRODUCT. ALL DIMENSIONS ARE IN MILLIMETRES. DO NOT MEASURE FROM DRAWING. |

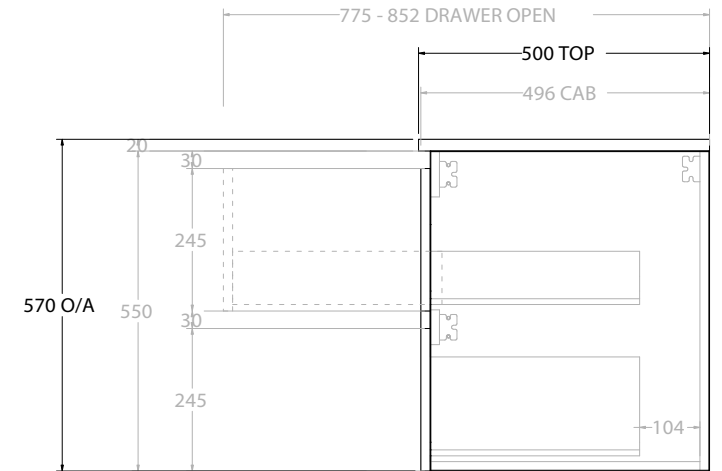
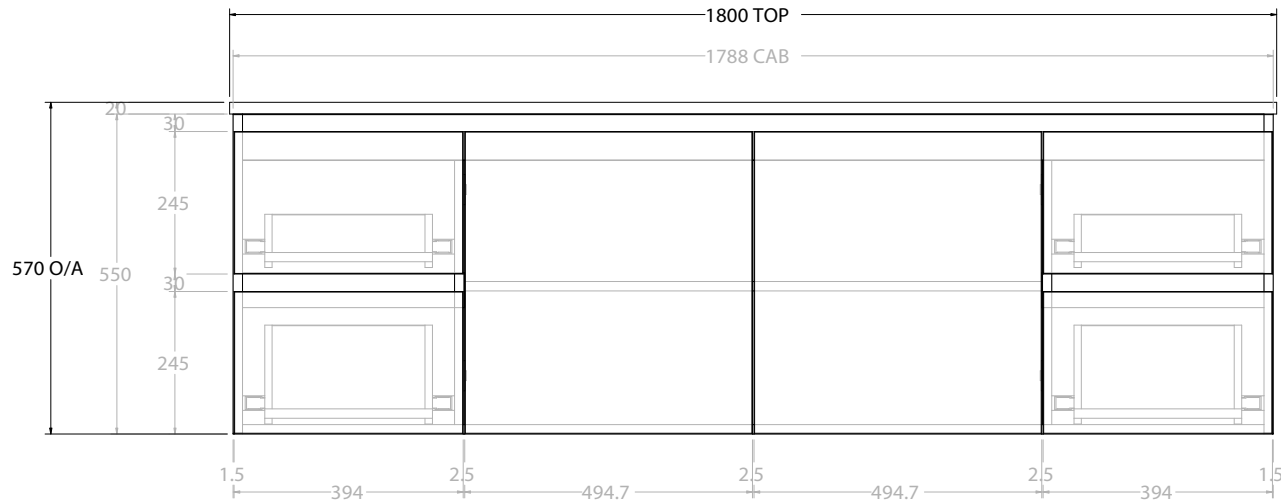
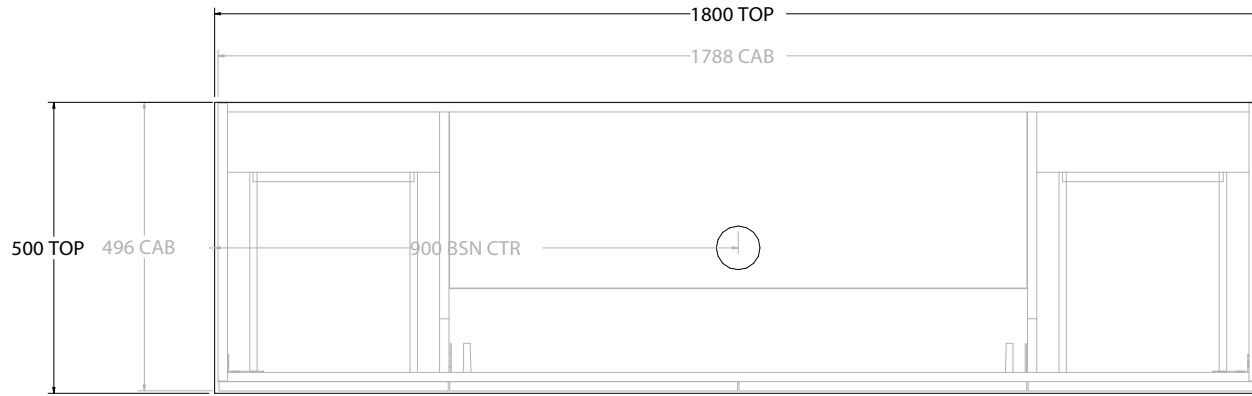


Adp

| | | |
|----------------|--|---------------------|
| PRODUCT: | GLACIER DOOR & DRAWER TWIN 1500 WALL HUNG OFFSET BASIN | |
| CODE: | LITE: GLLFCW1500WHL* | PRO: GLPFCW1500WHL* |
| MOUNTING: | WALL HUNG | |
| SIZE: | 1500W X 500D X 570H | |
| CONFIGURATION: | DOOR & DRAWER | |
| VERSION: | 01 | DATE: 08/16/22 |

| | |
|---|------------------|
| TOP: | BENCHTOP |
| BASIN POSITION: | OFFSET BASIN |
| FOR TOP OPTIONS PLEASE ADD ONE OF THE FOLLOWING TO THE END OF PRODUCT CODE: | |
| | CHERRY PIE = CP |
| | FRIDAY = FR |
| | CAESARSTONE = CS |

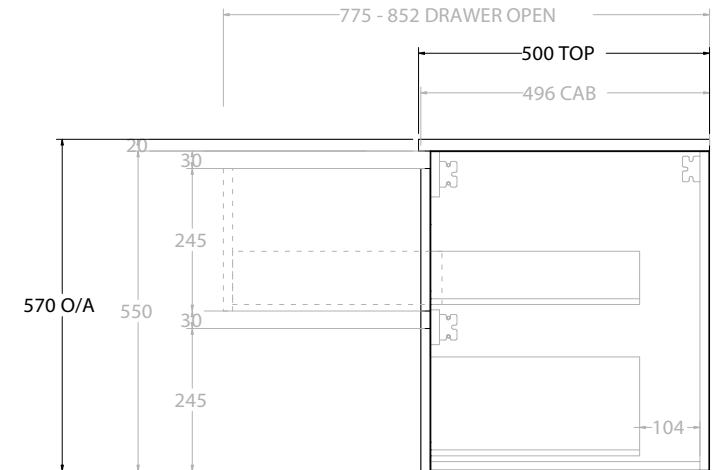
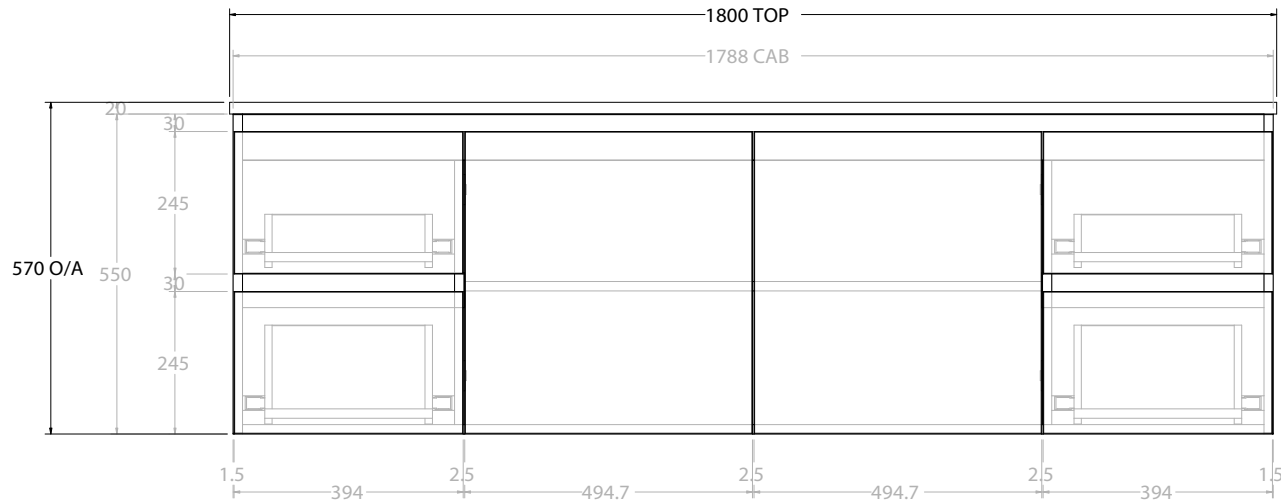
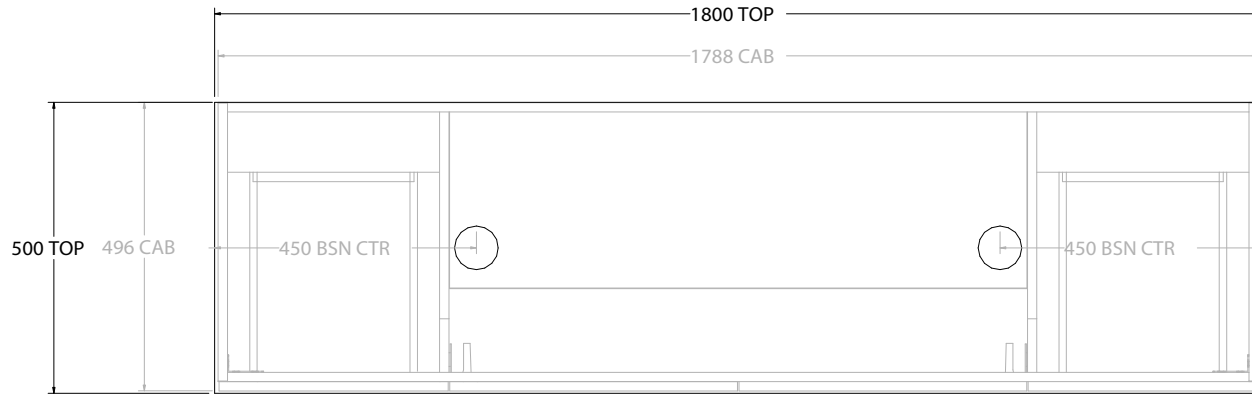
| |
|--|
| NOTES: |
| ALL DIMENSIONS ARE NOMINAL AND SUBJECT TO CHANGE. |
| DO NOT DRILL OR ROUGH IN UNTIL YOU HAVE RECEIVED AND MEASURED YOUR PRODUCT. |
| ALL DIMENSIONS ARE IN MILLIMETRES. |
| DO NOT MEASURE FROM DRAWING. |
| *LEFT HAND OFFSET PICTURED, RIGHT HAND OFFSET IS SAME BUT MIRRORED (REPLACE CODE SUFFIX L, WITH R) |



| | | |
|----------------|--|--------------------|
| PRODUCT: | GLACIER DOOR & DRAWER TWIN 1800 WALL HUNG CENTRE BASIN | |
| CODE: | LITE: GLLFCW1800WHC | PRO: GLPFCW1800WHC |
| MOUNTING: | WALL HUNG | |
| SIZE: | 1800W X 500D X 570H | |
| CONFIGURATION: | DOOR & DRAWER | |
| VERSION: | 01 | DATE: 08/16/22 |

| | |
|---|------------------|
| TOP: | BENCHTOP |
| BASIN POSITION: | CENTRE BASIN |
| FOR TOP OPTIONS PLEASE ADD ONE OF THE FOLLOWING TO THE END OF PRODUCT CODE: | |
| | CHERRY PIE = CP |
| | FRIDAY = FR |
| | CAESARSTONE = CS |

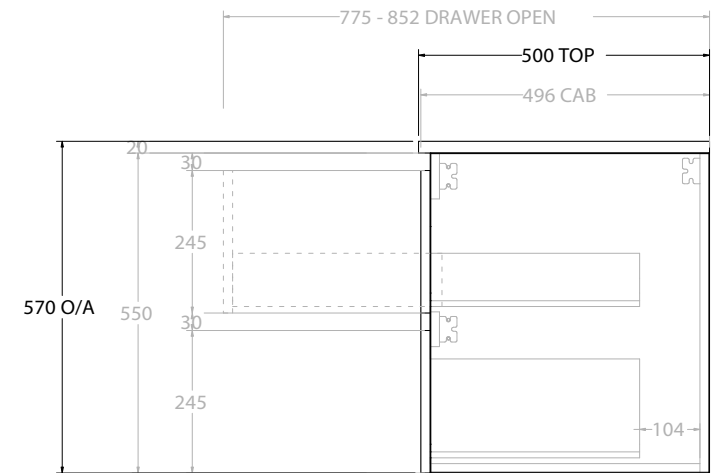
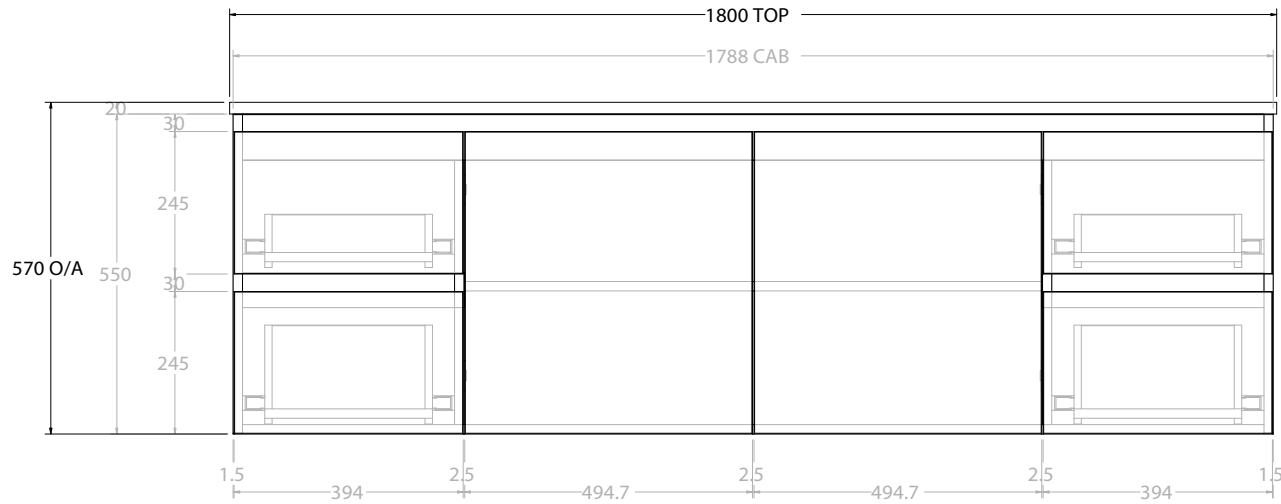
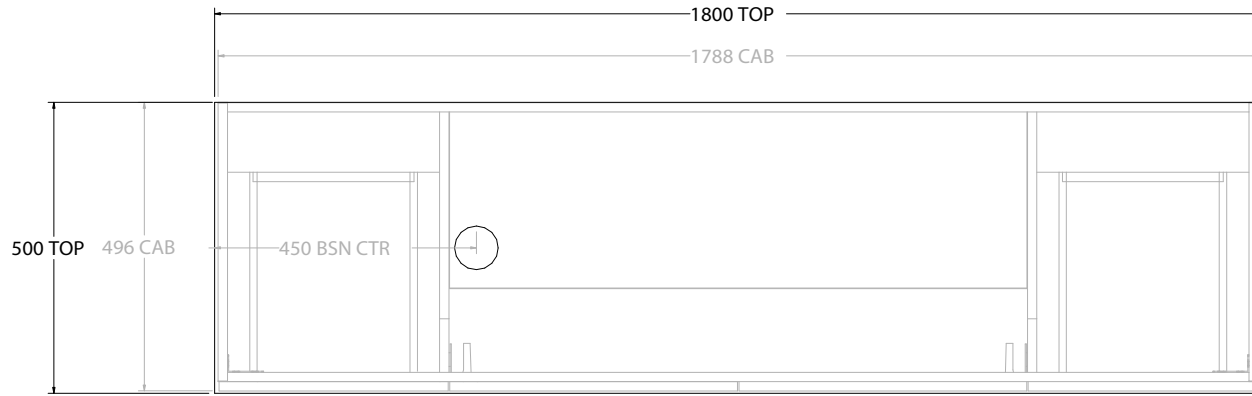
| |
|---|
| NOTES: |
| ALL DIMENSIONS ARE NOMINAL AND SUBJECT TO CHANGE. |
| DO NOT DRILL OR ROUGH IN UNTIL YOU HAVE RECEIVED AND MEASURED YOUR PRODUCT. |
| ALL DIMENSIONS ARE IN MILLIMETRES. |
| DO NOT MEASURE FROM DRAWING. |



| | | |
|----------------|--|--------------------|
| PRODUCT: | GLACIER DOOR & DRAWER TWIN 1800 WALL HUNG DOUBLE BASIN | |
| CODE: | LITE: GLLFCW1800WHD | PRO: GLPFCW1800WHD |
| MOUNTING: | WALL HUNG | |
| SIZE: | 1800W X 500D X 570H | |
| CONFIGURATION: | DOOR & DRAWER | |
| VERSION: 01 | DATE: | 08/16/22 |

| | |
|---|--------------|
| TOP: | BENCHTOP |
| BASIN POSITION: | DOUBLE BASIN |
| FOR TOP OPTIONS PLEASE ADD ONE OF THE FOLLOWING TO THE END OF PRODUCT CODE: | |
| CHERRY PIE = CP | |
| FRIDAY = FR | |
| CAESARSTONE = CS | |

| |
|---|
| NOTES: |
| ALL DIMENSIONS ARE NOMINAL AND SUBJECT TO CHANGE. |
| DO NOT DRILL OR ROUGH IN UNTIL YOU HAVE RECEIVED AND MEASURED YOUR PRODUCT. |
| ALL DIMENSIONS ARE IN MILLIMETRES. |
| DO NOT MEASURE FROM DRAWING. |



| | | |
|----------------|--|---------------------|
| PRODUCT: | GLACIER DOOR & DRAWER TWIN 1800 WALL HUNG OFFSET BASIN | |
| CODE: | LITE: GLLFCW1800WHL* | PRO: GLPFCW1800WHL* |
| MOUNTING: | WALL HUNG | |
| SIZE: | 1800W X 500D X 570H | |
| CONFIGURATION: | DOOR & DRAWER | |
| VERSION: | 01 | DATE: 08/16/22 |

| | |
|---|------------------|
| TOP: | BENCHTOP |
| BASIN POSITION: | OFFSET BASIN |
| FOR TOP OPTIONS PLEASE ADD ONE OF THE FOLLOWING TO THE END OF PRODUCT CODE: | |
| | CHERRY PIE = CP |
| | FRIDAY = FR |
| | CAESARSTONE = CS |

| |
|--------|
| NOTES: |
| |